

# Product Information Packet

May 19, 2018

Data shown is for the current revision model #. Ensure your nameplate model # matches.

<b>Model Number:</b>	<b>5KGS447SAA320D2</b>
<b>Catalog Number:</b>	<b>M8988</b>
<b>Instruction Manual:</b>	GEI-56128
<b>Connection Diagram:</b>	GEM2034E-FIG8
<b>Outline Drawing:</b>	239C6800AA

<b>Accessory Connection Diagrams</b>			
<b>Bearing Thermocouple:</b>	None	<b>Heater:</b>	None
<b>RTD:</b>	None	<b>Thermistor:</b>	None
<b>Thermostat:</b>	3027JE-2A	<b>Winding Thermocouple:</b>	None
<b>Bearing RTD:</b>	None		

## Table of Contents

Specification	01
Performance Characteristics	02
Outline Drawing	03
Connection Drawing(s)	04
Spare parts	05



**Marks:**

<b>MODEL NUMBER:</b>	<b>5KGS447SAA320D2</b>	<b>Estimated Weight:</b>	3200 Lbs
<b>Outline Drawing:</b>	239C6800AA	<b>Time Rating:</b>	CONT
<b>Connection Diagram:</b>	GEM2034E-FIG8	<b>Enclosure:</b>	TEFC
<b>Instruction Book:</b>	GEI-56128	<b>Encl Construction:</b>	X\$D
<b>Design Code:</b>	49BD3101A	<b>Ambient Max(°C):</b>	40
<b>Type:</b>	KGS	<b>Alt Ambient Max(°C):</b>	65
<b>Frame:</b>	447T	<b>Insulation Class:</b>	H
<b>Phases:</b>	3	<b>NEMA Design:</b>	C
<b>Poles:</b>	6	<b>Nominal Efficiency:</b>	95.8 %
<b>Output Power:</b>	150HP 111KW	<b>Guaranteed Efficiency:</b>	95.4 %
<b>RPM:</b>	1190	<b>3/4 Load Efficiency:</b>	95.7 %
<b>Voltage:</b>	460	<b>KVA Code:</b>	G
<b>Hertz:</b>	60	<b>Max KVAR:</b>	56.4
<b>Amps - FL:</b>	181.0	<b>Power Factor:</b>	81.0
<b>Service Factor:</b>	1.25	<b>Bearing - DE:</b>	NU 318
<b>Alt Service Factor:</b>	1.00	<b>Bearing - ODE:</b>	6318ZC3

**Enclosure is Totally Enclosed Fan-Cooled**

**Stamped Nameplate Notes:**

ROLLER BEARING - FOR BELTED LOAD ONLY  
 THERMOSTAT LEADS TB1-TB2 TRIP  
 SF AMPS 221.2  
 STAMP NP249A5564P051 AS BELOW:  
 MODEL:5KGS447SAA320D2 S/N: XXX  
 CSA CERTIFIED CSA09.2216219 FOR EX NA IIC 200 C GC  
 CL 1 ZONE2 AEX NA IIC 200C;CL 1 DIV2 GRP ABCD 200C  
 IN -40C <= AMB <= 40C, 1.0 SF ON SINE-WAVE PWR  
 SURF TEMP 200C AT 1.25SF ON SINE-WAVE PWR  
 OR 200 C VT OR 215 C CT OR --- C CHP PWM CONTROL  
 ALTERNATE RATING FOR PWM CONTROL 1.0SF 40C AMB  
 VT 0-60 HZ, CT 3-60 HZ, CHP --- HZ.

**Additional Information:**

6P - T EXTN - SPLIT LEAD  
 700 CU IN - 3.00" NPT  
 OIL RESISTANT SLEEVING ON LEADS  
 B5F4C4 HIGH FATIGUE STEEL AISI 4142 SHAFT MATERIAL  
 (3)N.C. TRIP TSTAT LDS TO MAIN CONDUIT BOX  
 F1 MOUNTING

**Performance Characteristics**

1st Winding 1st Connection

**Design: 49BD3101A**

**Marks:**

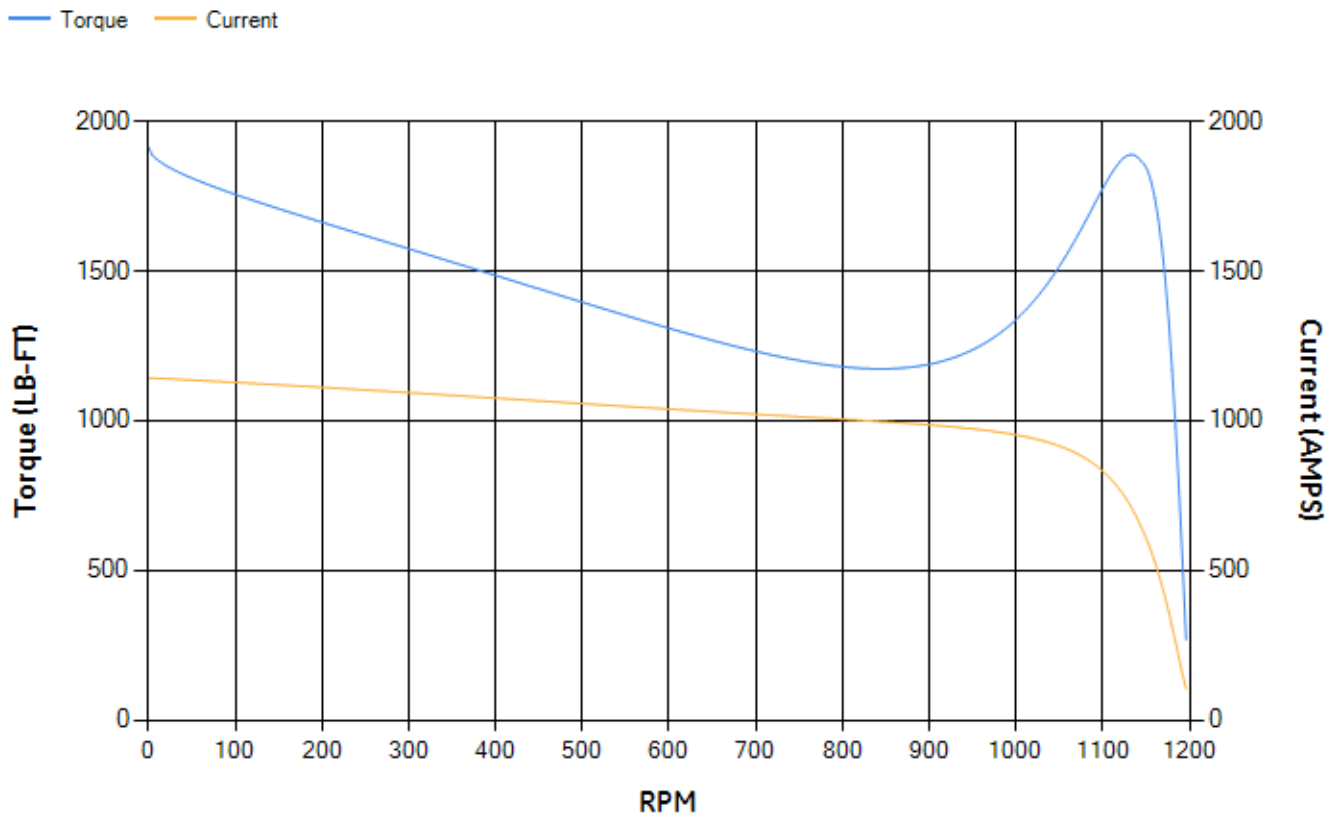
LOAD %	125.0	115.0	100.0	75.0	50.0	25.0	0.0
% EFF	95.26	95.43	95.82	95.73	95.26	92.73	0.00
% PF	83.28	82.52	80.8	75.57	64.66	42.12	3.06
AMPS	221.21	205.03	181.32	145.56	113.95	89.85	78.65

<b>TORQ(FL)#FT</b>	661.93	<b>TORQ(LR)%FL</b>	288.98	<b>TORQ(BD)%FL</b>	284.64
<b>AMPS(LR)</b>	1142.85	<b>PF AT START</b>	0.44		

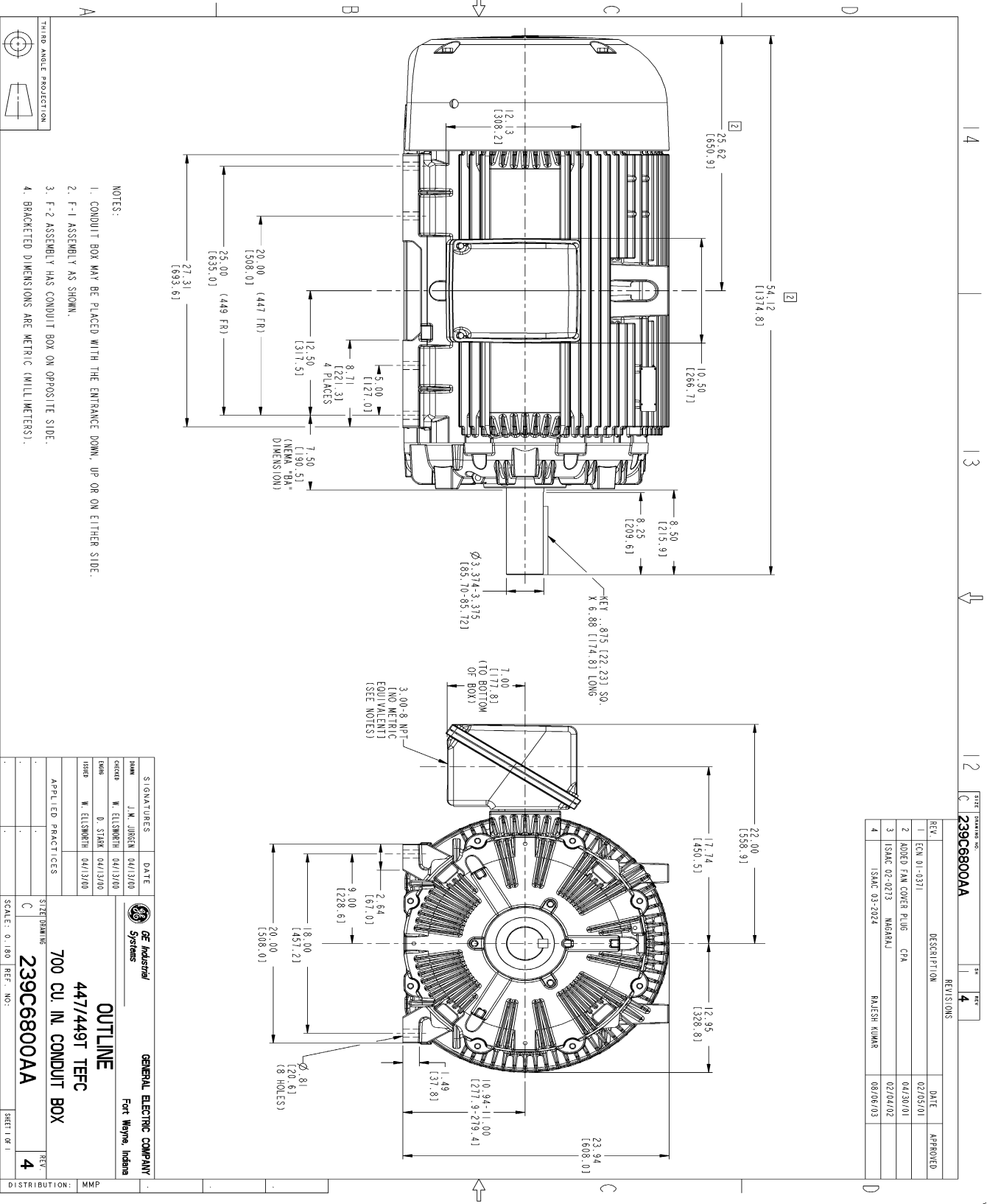
This motor is capable of two cold or one hot start with a maximum connected load inertia of 14307 Lb-Ft Sq (602.32 Kg-meter Sq)at 100% voltage, where the load torque varies with the square of the speed. Acceleration time with maximum inertia and the above load type is 45 seconds. Safe stall time at 100% voltage is 80 seconds cold, 55 seconds hot. Rotor inertia is 214.07 Lb-Ft Sq (9.01 Kg-meter Sq).

<b>Open Circuit A-C:</b>	0.664	<b>Short Circuit D-C:</b>	0.033
<b>Short Circuit A-C:</b>	0.034	<b>X/R Ratio:</b>	12.475
<b>Stator Slots:</b>	72	<b>Rotor Slots:</b>	58

**Speed Torque Current Curve (First Connection, First Speed)**



Marks:



REV.	DESCRIPTION	DATE	APPROVED
1	ECN 01-0371	02/05/01	
2	RODED FAN COVER PLUG CFA	04/30/01	
3	ISSAC 02-0213 MARGRAJ	02/04/02	
4	ISSAC 03-2024 RAJESH KUMAR	08/06/03	

SIGNATURES	DATE
DAVE J.M. JOHNSON 04/13/00	
CHUCK W. ELLSWORTH 04/13/00	
DAVE D. STARR 04/13/00	
ISSAC W. ELLSWORTH 04/13/00	

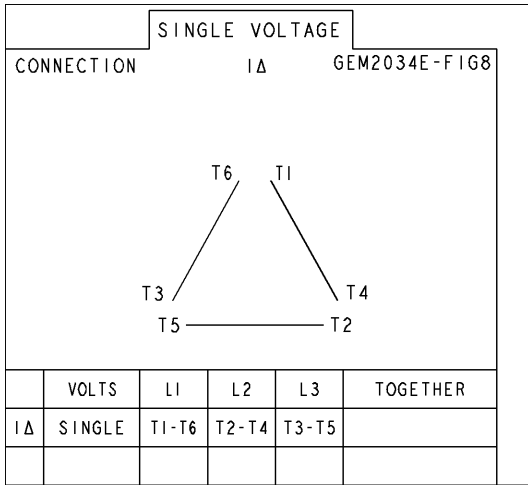
  

		<b>GENERAL ELECTRIC COMPANY</b> Fort Wayne, Indiana	
<b>OUTLINE</b> 447/449T TEFC 700 CU. IN. CONDUIT BOX			
SCALE: 0.180	REF. NO.:	SHEET NO. 1	REV. 4
DISTRIBUTION: MMP			

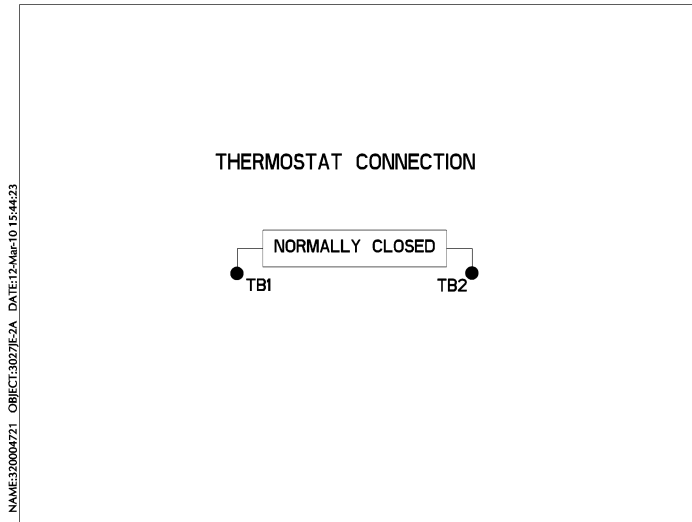
SIZE DRAWING NO. 239C6800AA

Marks:

**Connection Diagram**  
**GEM2034E-FIG8**



**Thermostat Connection**  
**3027JE-2A**



End shield Assembly		
Part Description	DE Side Part#	ODE Side Part#
End Shield	115E4355AA1	115E4355LL1
Bearing	235A2519AA01	235A2514AG01
Slinger/Inproseal	149C4399G07	149C4399G07

Fan & Fan Cover Assembly	
Part Description	Part#
Fan	159C7100G03
Fan Cover	128D6841AA1

Conduit & Accessories Box Assembly	
Part Description	Part#
Conduit Box	118D4408AD2

Mechanical Accessories	
Part Description	Part#
Brake	
Tachometer	