

Product Information Packet

March 19, 2015

Data shown is for the current revision model #. Ensure your nameplate model # matches.

Model Number:	5KGS326SAA208
Catalog Number:	M8991
Instruction Manual:	GEI-56128
Connection Diagram:	GEM2034E-FIG7
Outline Drawing:	239C6000AE

Accessory Connection Diagrams			
Bearing Thermocouple:	None	Heater:	None
RTD:	None	Thermistor:	None
Thermostat:	None	Winding Thermocouple:	None
Bearing RTD:	None		

Table of Contents	
Specification	01
Performance Characteristics	02
Outline Drawing	03
Connection Drawing(s)	04

Marks:

MODEL NUMBER:	5KGS326SAA208	Estimated Weight:	750 Lbs
Outline Drawing:	239C6000AE	Time Rating:	CONT
Connection Diagram:	GEM2034E-FIG7	Enclosure:	TEFC
Instruction Book:	GEI-56128	Encl Construction:	X\$D
Design Code:	32BD1008A	Ambient Max(°C):	40
Type:	KGS	Alt Ambient Max(°C):	65
Frame:	326T	Insulation Class:	F
Phases:	3	NEMA Design:	C
Poles:	4	Nominal Efficiency:	94.1 %
Output Power:	50HP 37KW	Guaranteed Efficiency:	94.5
RPM:	1775	3/4 Load Efficiency:	94.5
Voltage:	460	KVA Code:	G
Hertz:	60	Max KVAR:	16.7
Amps - FL:	61.0	Power Factor:	81.5
Service Factor:	1.15	Bearing - DE:	6312ZC3
Alt Service Factor:	1.00	Bearing - ODE:	6312ZC3

Enclosure is Totally Enclosed Fan-Cooled

Stamped Nameplate Notes:**Additional Information:**

4P - T EXTN
TEFC XSD ULTRA STOCK MOHANTY 11/19/2003

Performance Characteristics

1st Winding 1st Connection

Design: 32BD1008A

Marks:

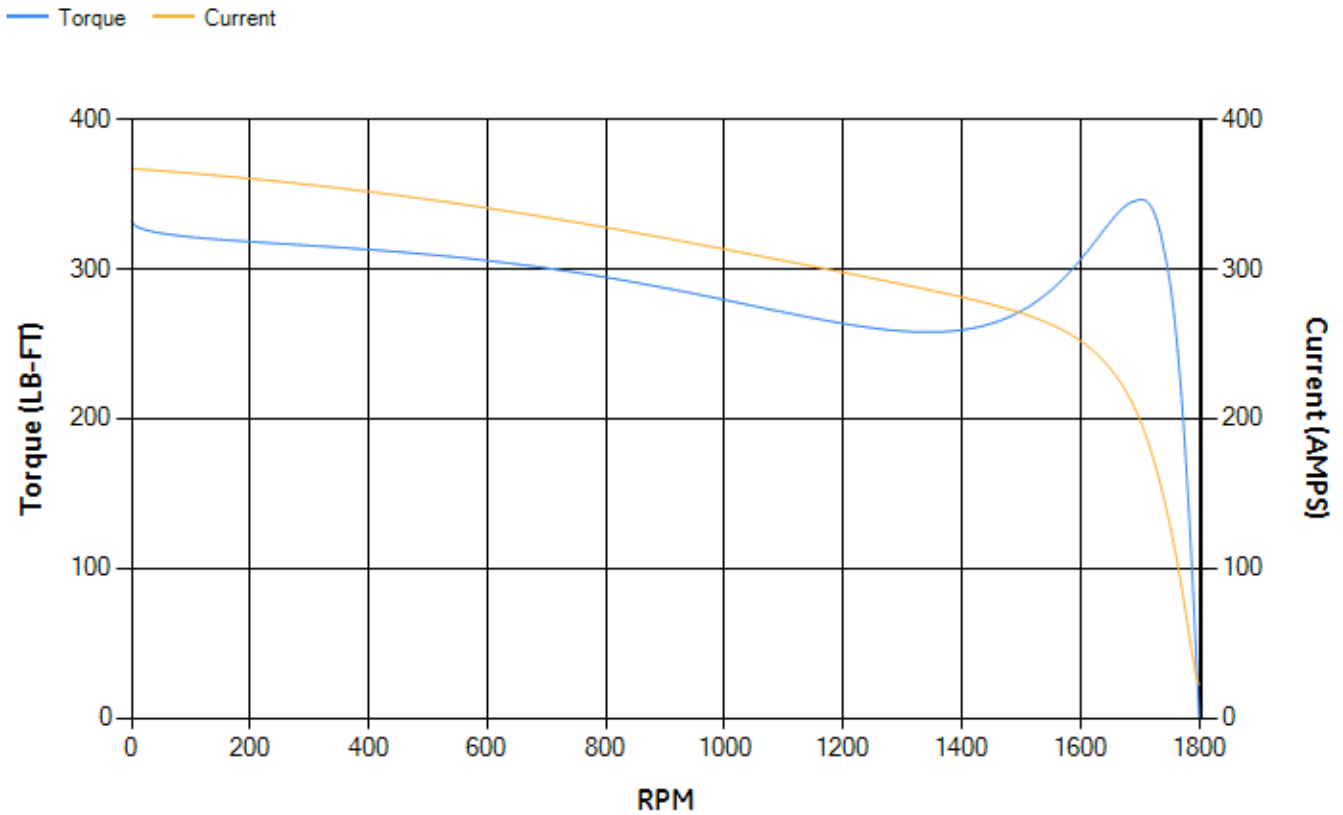
LOAD %	125.0	115.0	100.0	75.0	50.0	25.0	0.0
% EFF	93.78	94.1	94.68	94.86	94.6	92.14	0.00
% PF	83.86	83.59	82.64	78.9	69.8	47.9	3.64
AMPS	74.38	68.42	59.68	46.89	35.44	26.5	22.19

TORQ(FL)#FT	147.97	TORQ(LR)%FL	224.43	TORQ(BD)%FL	233.04
AMPS(LR)	367.09	PF AT START	0.38		

This motor is capable of two cold or one hot start with a maximum connected load inertia of 1079 Lb-Ft Sq (45.43 Kg-meter Sq)at 100% voltage, where the load torque varies with the square of the speed. Acceleration time with maximum inertia and the above load type is 26 seconds. Safe stall time at 100% voltage is 55 seconds cold, 31 seconds hot. Rotor inertia is 10.2 Lb-Ft Sq (0.43 Kg-meter Sq).

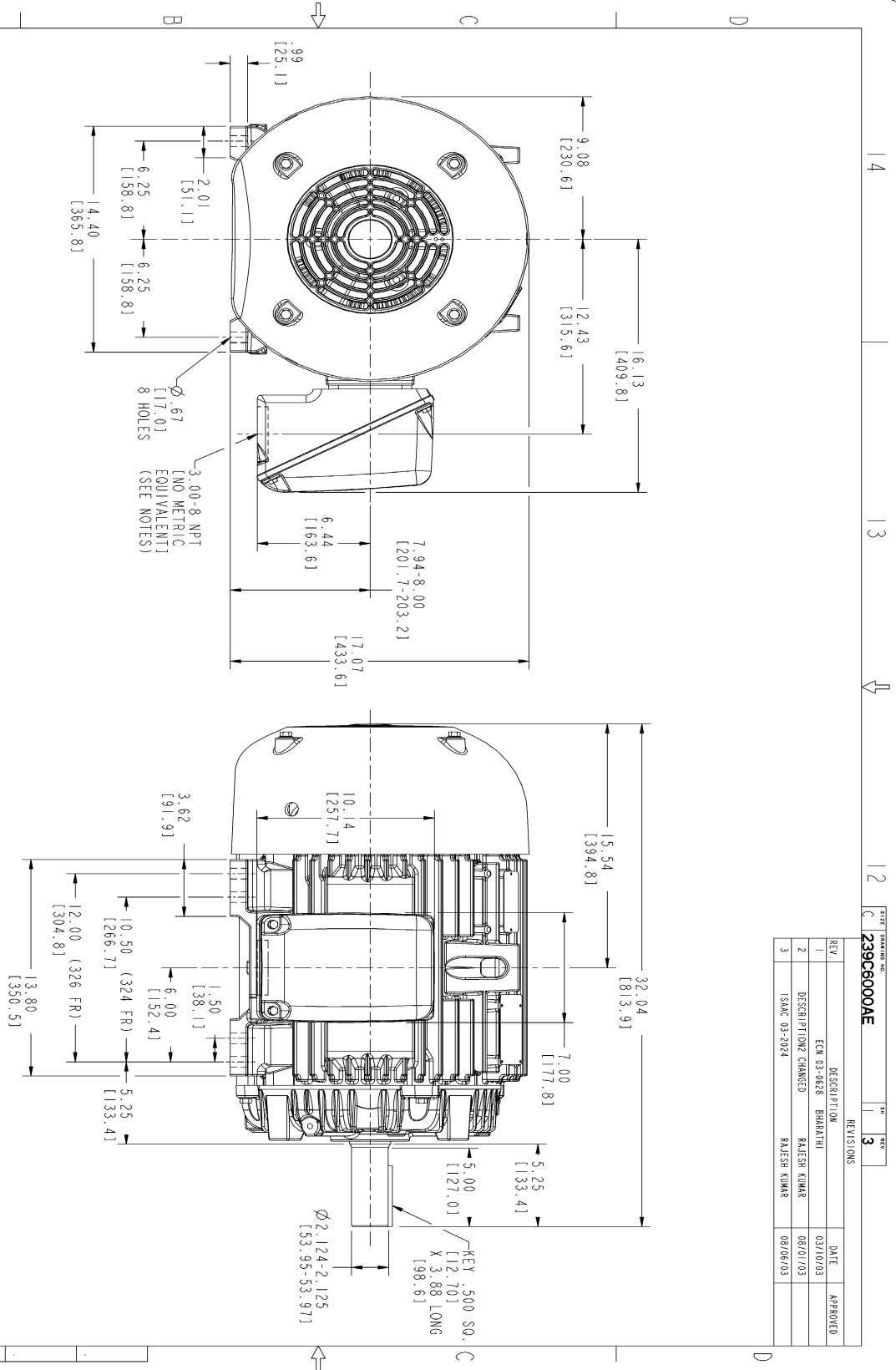
Open Circuit A-C:	0.48	Short Circuit D-C:	0.024
Short Circuit A-C:	0.023	X/R Ratio:	8.903
Stator Slots:	48	Rotor Slots:	38

Speed Torque Current Curve (First Connection, First Speed)



NAME: 103016807 OBJECT: 239C6000AE DATE: 07-Aug-03 23:25:11

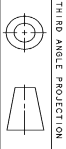
Marks:



NOTES :

1. CONDUIT BOX MAY BE PLACED WITH THE ENTRANCE DOWN, UP OR ON EITHER SIDE.
2. F-1 ASM AS SHOWN.
3. F-2 ASM HAS CONDUIT BOX ON OPPOSITE SIDE.
4. BRACKETED DIMENSIONS ARE METRIC (MILLIMETERS).

REV.	DESCRIPTION	DATE	APPROVED
1	EQM 03-0628 BHARATHI	03/10/03	
2	DESCRIPTION CHANGED	08/01/03	
3	ISSAC 03-2024	08/06/03	



THIRD ANGLE PROJECTION

SIGNATURES	DATE	GENERAL ELECTRIC COMPANY Fort Wayne, Indiana
DESIGNER: WABRKL	03/13/02	OUTLINE 346 CU. IN. CONDUIT BOX 239C6000AE
DRAWN: MANIVARAN	03/13/02	
ISSUED: WABRKL	03/13/02	
APPLIED PRACTICES		
SCALE: 0.250		
REF. NO:		
SHEET NO. 1		
REV. 3		
DISTRIBUTION: MMP		

Marks:

Connection Diagram
GEM2034E-FIG7

