



GE INDUSTRIAL MOTORS
a **WOLONG** company

Product Technical Information

May 8, 2021

Data shown is for the current revision model #. Ensure your nameplate model # matches.

Model Number:	5KGS365SAA220D3
Catalog Number:	M8993
Instruction Manual:	GEI-56128
Connection Diagram:	GEM2034E-FIG7
Outline Drawing:	239C6200AA

Accessory Connection Diagrams

Bearing Thermocouple:	None	Heater:	None
RTD:	None	Thermistor:	None
Thermostat:	3027JE-2A	Winding Thermocouple:	None
Bearing RTD:	None		

Table of Contents

Specification	01
Performance Characteristics	02
Outline Drawing	03
Connection Drawing(s)	04
Spare parts	05

Marks:

MODEL NUMBER:	5KGS365SAA220D3	Estimated Weight:	1120 Lbs
Outline Drawing:	239C6200AA	Time Rating:	CONT
Connection Diagram:	GEM2034E-FIG7	Enclosure:	TEFC
Instruction Book:	GEI-56128	Encl Construction:	X\$D
Design Code:	36BD1262A	Ambient Max(°C):	40
Type:	KGS	Alt Ambient Max(°C):	--
Frame:	365T	Insulation Class:	H
Phases:	3	NEMA Design:	A
Poles:	4	Nominal Efficiency:	95.4 %
Output Power:	75HP 55.5KW	Guaranteed Efficiency:	95.0 %
RPM:	1780	3/4 Load Efficiency:	--
Voltage:	460	KVA Code:	H
Hertz:	60	Max KVAR:	23.3
Amps - FL:	87.6	Power Factor:	84.0
Service Factor:	1.15	Bearing - DE:	NU 314
Alt Service Factor:	--	Bearing - ODE:	6314ZC3

Enclosure is Totally Enclosed Fan-Cooled

Stamped Nameplate Notes:

ROLLER BEARING - FOR BELTED LOAD ONLY
THERMOSTAT LEADS TB1-TB2 TRIP
STAMP NP249A5564P051 AS BELOW:
MODEL:5KGS365SAA220D3 S/N: XXX
CSA CERTIFIED CSA09.2216219 FOR EX NA IIC 200 C GC
CL 1 ZONE2 AEX NA IIC 200C;CL 1 DIV2 GRP ABCD 200C
IN -40C <= AMB <= 40C, 1.0 SF ON SINE-WAVE PWR
SURF TEMP 230C AT 1.15SF ON SINE-WAVE PWR
OR 200C VT OR 230C CT OR -- CHP PWM CONTROL
ALTERNATE RATING FOR PWM CONTROL 1.0SF 40C AMB
VT 0-60 HZ, CT 10-60 HZ, CHP -- HZ
MAX RADIAL LOAD: 2648 LBF AT 2.94"
FROM SHAFT SHOULDER



Additional Information:

4P - T EXTN
C/BOX 346 CU IN - 3.00" NPT
OIL RESISTANT SLEEVING ON LEADS
B5F4C4 HIGH FATIGUE STEEL AISI 4142 SHAFT MATERIAL
(3)N.C. CLASS F TRIP TSTAT LDS TO MAIN CONDUIT BOX
F1 MOUNTING



Performance Characteristics

1st Winding 1st Connection

Design: 36BD1262A

Marks:

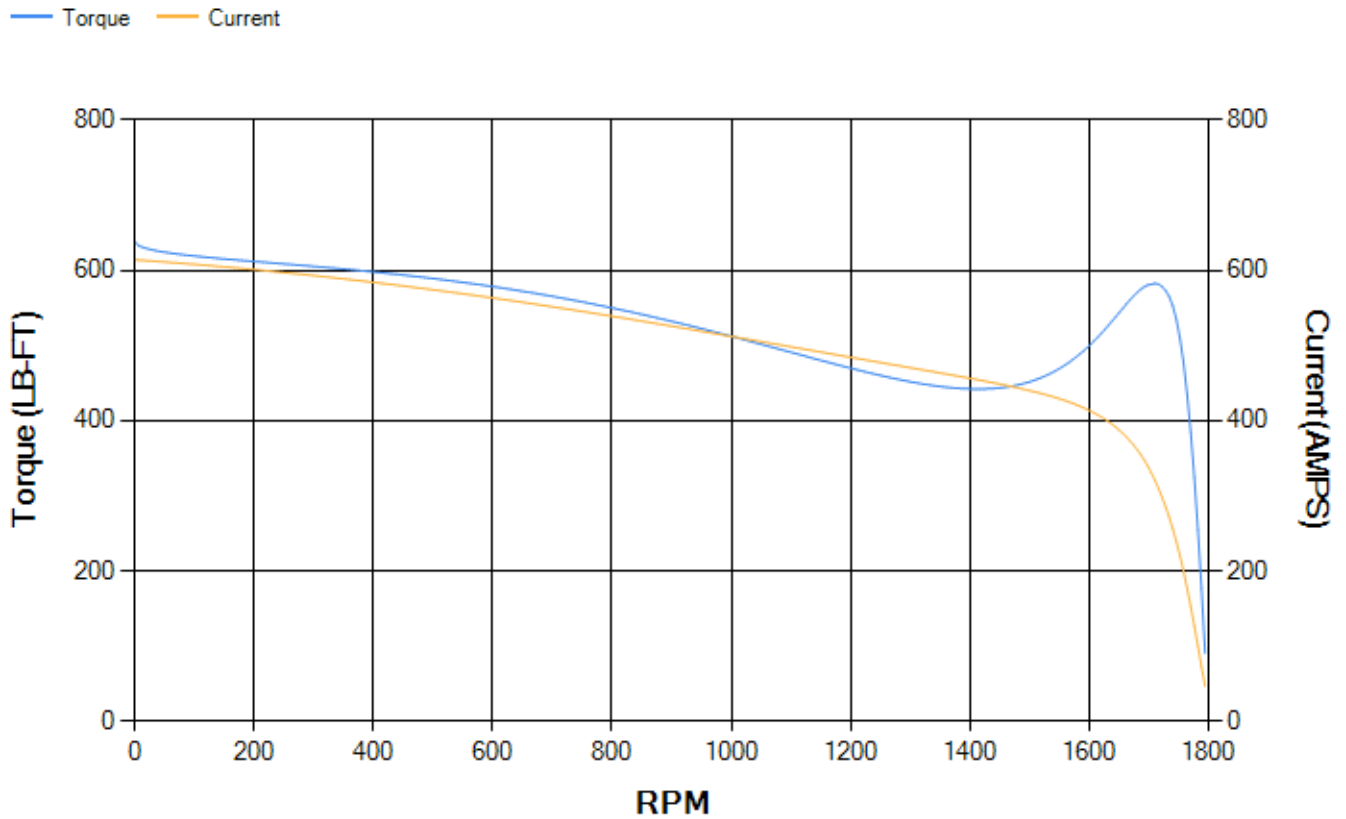
LOAD %	125.0	115.0	100.0	75.0	50.0	25.0	0.0
% EFF	94.94	95.16	95.64	95.7	95.44	93.28	0.00
% PF	85.63	85.19	84.05	80.06	70.73	48.4	3.13
AMPS	107.94	99.57	87.14	68.71	52	38.86	32.56

TORQ(FL)#FT	221.35	TORQ(LR)%FL	288.57	TORQ(BD)%FL	262.34
AMPS(LR)	614.22	PF AT START	0.42		

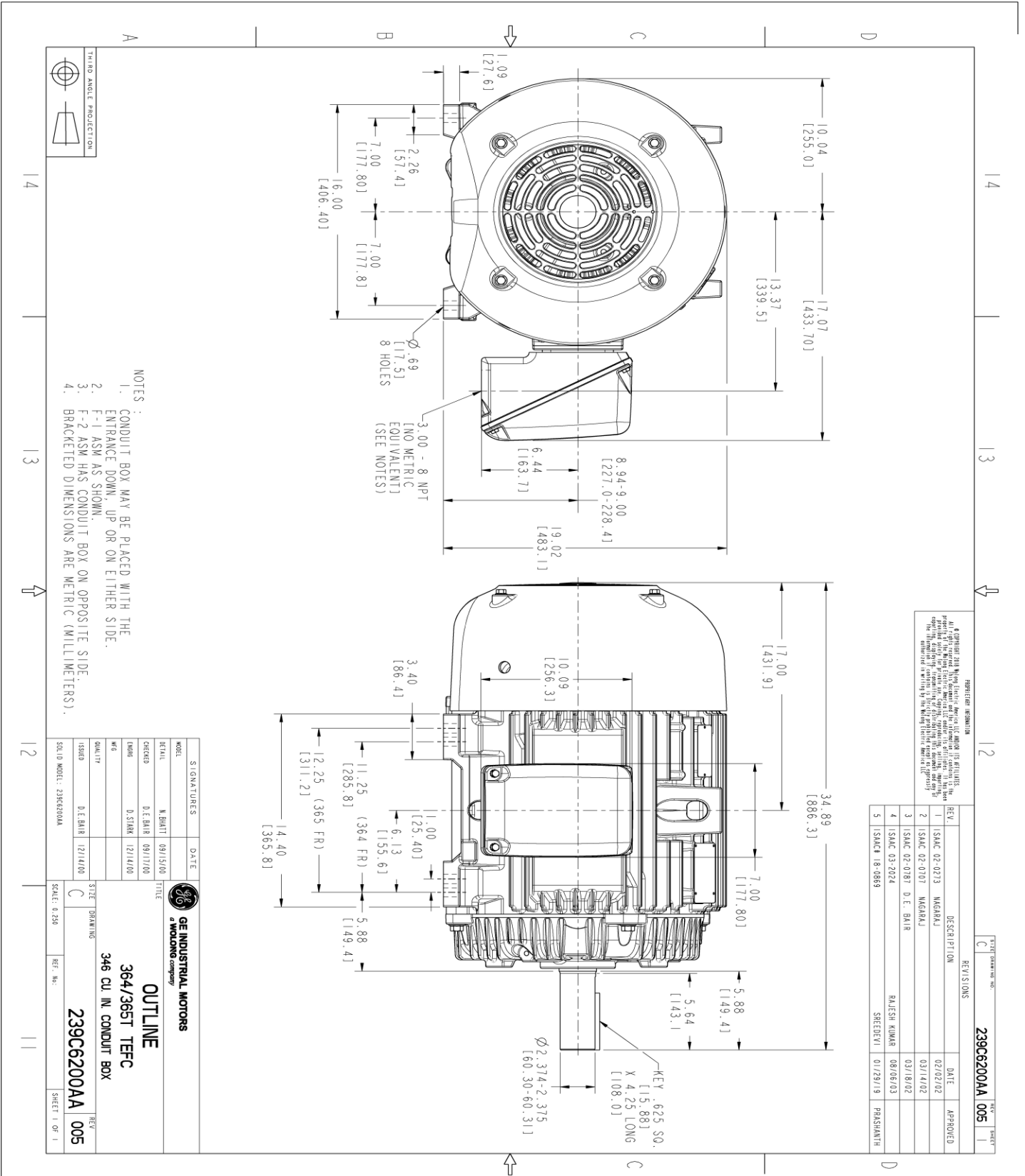
This motor is capable of two cold or one hot start with a maximum connected load inertia of 1532 Lb-Ft Sq (64.5 Kg-meter Sq)at 100% voltage, where the load torque varies with the square of the speed. Acceleration time with maximum inertia and the above load type is 19 seconds. Safe stall time at 100% voltage is 41 seconds cold, 23 seconds hot. Rotor inertia is 20.68 Lb-Ft Sq (0.87 Kg-meter Sq).

Open Circuit A-C:	0.579	Short Circuit D-C:	0.026
Short Circuit A-C:	0.024	X/R Ratio:	9.896
Stator Slots:	60	Rotor Slots:	50

Speed Torque Current Curve (First Connection, First Speed)



Marks:



REPRODUCTION INFORMATION
 It is prohibited to reproduce or disseminate this drawing, in any form, without the written permission of GE Industrial Motors. The user of this drawing is responsible for obtaining the necessary permissions from the appropriate authorities. The user of this drawing is also responsible for obtaining the necessary permissions from the appropriate authorities. The user of this drawing is also responsible for obtaining the necessary permissions from the appropriate authorities.

REV.	DESCRIPTION	DATE	APPROVED
1	ISAC 02-0213	02/02/02	
2	ISAC 02-0107	03/14/02	
3	ISAC 02-0187	03/18/02	
4	ISAC 03-2024	08/08/03	
5	ISAC# 18-0869	01/29/19	

- NOTES:
- CONDUIT BOX MAY BE PLACED WITH THE ENTRANCE DOWN, UP OR ON EITHER SIDE.
 - F-1 ASM AS SHOWN.
 - F-2 ASM HAS CONDUIT BOX ON OPPOSITE SIDE.
 - BRACKETED DIMENSIONS ARE METRIC (MILLIMETERS).

MODEL	SIGNATURES	DATE
RETAIL	M. BHATT	09/15/00
CHECKED	D. E. BAIR	09/17/00
DWG#	D. STAM	12/14/00
W/S		
QUALITY		
ISSUED	D. E. BAIR	12/14/00
ISO 10 MODEL: 239C6200AA		

GE INDUSTRIAL MOTORS
 a WOLSKEL company

OUTLINE
 364/365T TEFC
 346 CU. IN. CONDUIT BOX

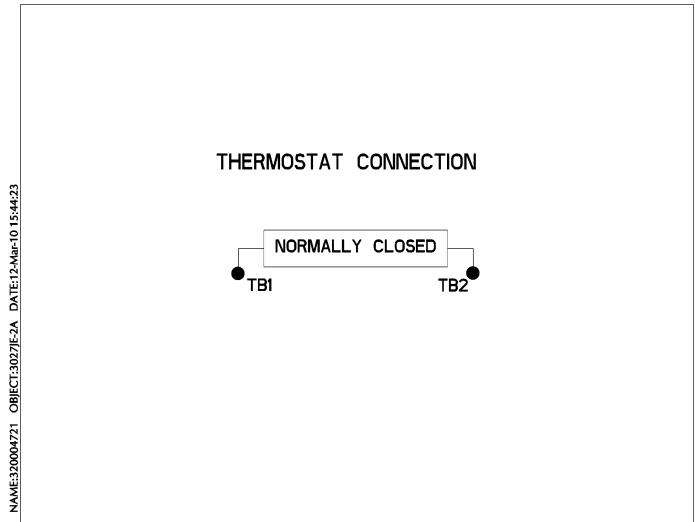
239C6200AA
 SCALE: 0.250
 REF. NO.:
 SHEET 1 OF 1

Marks:

Connection Diagram
GEM2034E-FIG7



Thermostat Connection
3027JE-2A



End shield Assembly		
Part Description	DE Side Part#	ODE Side Part#
End Shield	115E4250AA1	115E4250LK1
Bearing	235A2524AA01	235A2516AC01
Slinger/Inproseal	149C4399G05	149C4399G05

Fan & Fan Cover Assembly	
Part Description	Part#
Fan	159C7100AA1
Fan Cover	128D6810AA1

Conduit & Accessories Box Assembly	
Part Description	Part#
Conduit Box	149C4429AA2

Mechanical Accessories	
Part Description	Part#
Brake	
Tachometer	

