



GE INDUSTRIAL MOTORS
a **WOLONG** company

Product Technical Information

May 28, 2021

Data shown is for the current revision model #. Ensure your nameplate model # matches.

Model Number:	5KGS447SAA220D3
Catalog Number:	M8997
Instruction Manual:	GEI-56128
Connection Diagram:	GEM2034E-FIG20
Outline Drawing:	239C6800AA

Accessory Connection Diagrams

Bearing Thermocouple:	None	Heater:	None
RTD:	None	Thermistor:	None
Thermostat:	3027JE-2A	Winding Thermocouple:	None
Bearing RTD:	None		

Table of Contents

Specification	01
Performance Characteristics	02
Outline Drawing	03
Connection Drawing(s)	04
Spare parts	05

Marks:

MODEL NUMBER:	5KGS447SAA220D3	Estimated Weight:	3080 Lbs
Outline Drawing:	239C6800AA	Time Rating:	CONT
Connection Diagram:	GEM2034E-FIG20	Enclosure:	TEFC
Instruction Book:	GEI-56128	Encl Construction:	X\$D
Design Code:	49BD1488A	Ambient Max(°C):	40
Type:	KGS	Alt Ambient Max(°C):	65
Frame:	447T	Insulation Class:	H
Phases:	3	NEMA Design:	C
Poles:	4	Nominal Efficiency:	96.2 %
Output Power:	200HP 148KW	Guaranteed Efficiency:	95.8 %
RPM:	1780	3/4 Load Efficiency:	--
Voltage:	460	KVA Code:	G
Hertz:	60	Max KVAR:	52.1
Amps - FL:	224.0	Power Factor:	87.0
Service Factor:	1.15	Bearing - DE:	NU 318
Alt Service Factor:	1.00	Bearing - ODE:	6318ZC3

Enclosure is Totally Enclosed Fan-Cooled

Stamped Nameplate Notes:

400V, 50HZ 254.0 AMPS AT 1.0SF
 ROLLER BEARING - FOR BELTED LOAD ONLY
 THERMOSTAT LEADS TB1-TB2 TRIP
 STAMP NP249A5564P051 AS BELOW:
 MODEL:5KGS447SAA220D3 S/N: XXX
 CSA CERTIFIED CSA09.2216219 FOR EX NA IIC 200 C GC
 CL 1 ZONE2 AEX NA IIC 200C;CL 1 DIV2 GRP ABCD 200C
 IN -40C <= AMB <= 40C, 1.0 SF ON SINE-WAVE PWR
 SURF TEMP 260C AT 1.15SF ON SINE-WAVE PWR
 OR 200C VT OR 215C CT OR --C CHP PWM CONTROL
 ALTERNATE RATING FOR PWM CONTROL 1.0SF 40C AMB
 VT 0 - 60 HZ, CT 15-60 HZ, CHP -- HZ.
 MAX RADIAL LOAD: 4200 LBF AT 4.25"
 FROM SHAFT SHOULDER



Additional Information:

4P - T EXTN - SPLIT LEAD
C/BOX 700 CU IN - 3.00" NPT
OIL RESISTANT SLEEVING ON LEADS
B5F4C4 HIGH FATIGUE STEEL AISI 4142 SHAFT MATERIAL
(3)N.C. CLASS F TRIP TSTAT LDS TO MAIN CONDUIT BOX
F1 MOUNTING



Performance Characteristics

1st Winding 1st Connection

Design: 49BD1488A

Marks:

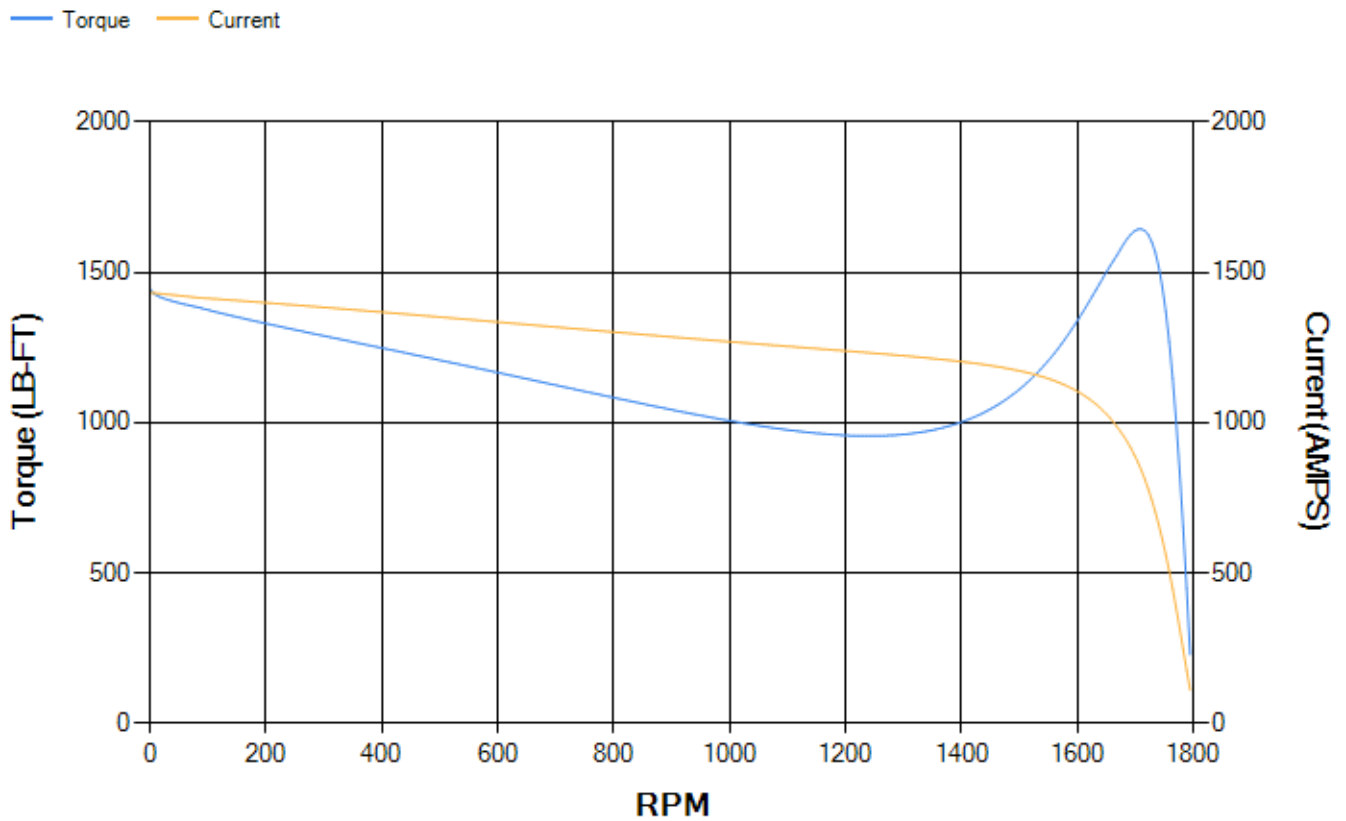
LOAD %	125.0	115.0	100.0	75.0	50.0	25.0	0.0
% EFF	95.68	95.87	96.3	96.32	96.09	94.24	0.00
% PF	88.09	87.81	86.99	83.88	75.98	54.61	3.36
AMPS	277.6	255.7	223.46	173.78	128.2	90.93	72.65

TORQ(FL)#FT 589.18 **TORQ(LR)%FL** 245.73 **TORQ(BD)%FL** 278.54
AMPS(LR) 1432.95 **PF AT START** 0.39

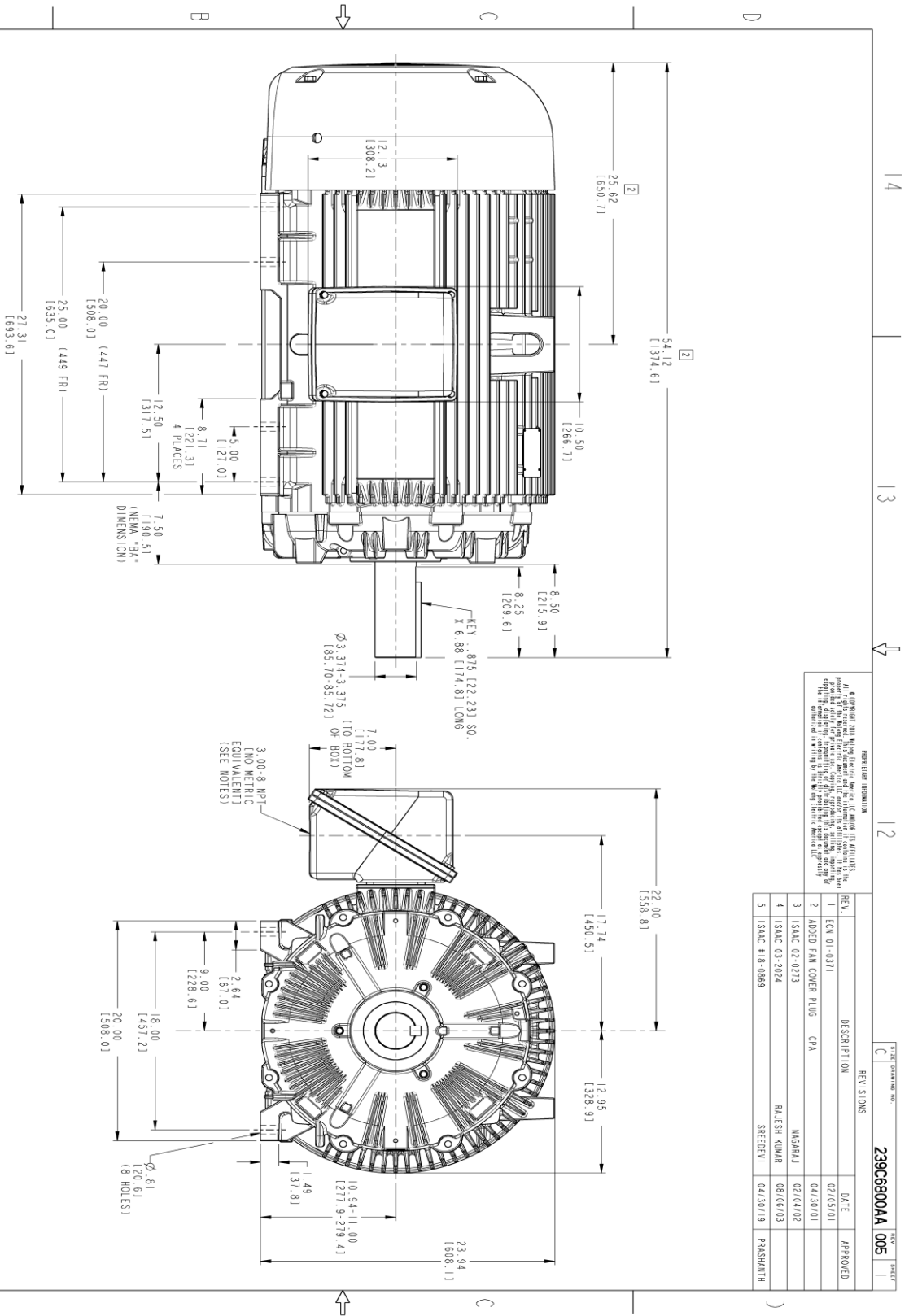
This motor is capable of two cold or one hot start with a maximum connected load inertia of 3312 Lb-Ft Sq (139.44 Kg-meter Sq)at 100% voltage, where the load torque varies with the square of the speed. Acceleration time with maximum inertia and the above load type is 21 seconds. Safe stall time at 100% voltage is 46 seconds cold, 25 seconds hot. Rotor inertia is 135.55 Lb-Ft Sq (5.71 Kg-meter Sq).

Open Circuit A-C: 0.801 **Short Circuit D-C:** 0.041
Short Circuit A-C: 0.033 **X/R Ratio:** 15.632
Stator Slots: 72 **Rotor Slots:** 58

Speed Torque Current Curve (First Connection, First Speed)



Marks:



PROHIBITION INFORMATION
 © Copyright 2018 by GE Industrial Motors. All rights reserved. No part of this document may be reproduced, stored in a retrieval system, or transmitted in any form or by any means, electronic, mechanical, photocopying, recording, or by any information storage and retrieval system, without the prior written permission of GE Industrial Motors. The information contained herein is the property of GE Industrial Motors and is confidential.

REV.	DESCRIPTION	DATE	APPROVED
1	ECH 01-0311	02/05/01	
2	ADDED FAN COVER PLUG	04/30/01	
3	ISAC 02-0213	02/04/02	
4	ISAC 03-2024	08/08/03	
5	ISAC #18-0869	04/30/19	

NOTES:

1. CONDUIT BOX MAY BE PLACED WITH THE ENTRANCE DOWN, UP OR ON EITHER SIDE.
2. F-1 ASSEMBLY AS SHOWN.
3. F-2 ASSEMBLY HAS CONDUIT BOX ON OPPOSITE SIDE.
4. BRACKETED DIMENSIONS ARE METRIC (MILLIMETERS).

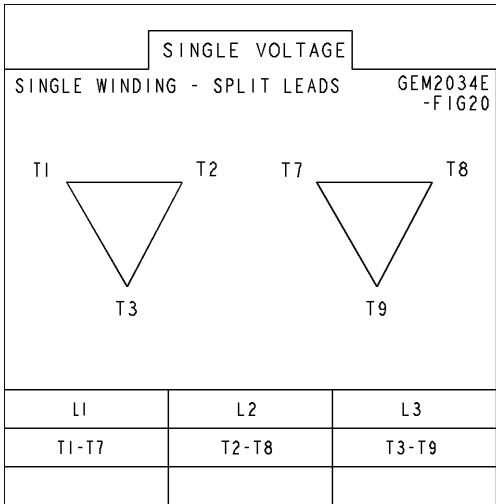


SIGNATURES	DATE	TITLE
MODEL		
DESIGN		
CHECKED		
DATE		
ISSUED		
SCALE		
REF. NO.		

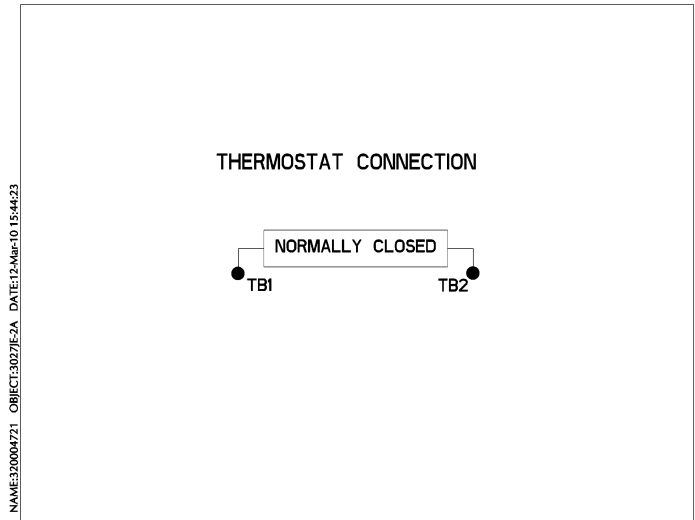
GE INDUSTRIAL MOTORS
 a WOLONG company
OUTLINE DRAWING
 447/449T TEFC
 700 CU IN CONDUIT BOX
239C6800AA
 REV. 005
 SHEET 1 OF 1

Marks:

Connection Diagram
GEM2034E-FIG20



Thermostat Connection
3027JE-2A



End shield Assembly		
Part Description	DE Side Part#	ODE Side Part#
End Shield	115E4355AA1	115E4355LF1
Bearing	235A2519AA01	235A2514AG01
Slinger/Inproseal	149C4399G07	149C4399G07

Fan & Fan Cover Assembly	
Part Description	Part#
Fan	159C7100AA2
Fan Cover	128D6841AA1

Conduit & Accessories Box Assembly	
Part Description	Part#
Conduit Box	118D4408AD2

Mechanical Accessories	
Part Description	Part#
Brake	
Tachometer	

