



GE INDUSTRIAL MOTORS
a **WOLONG** company

Product Technical Information

October 3, 2022

Data shown is for the current revision model #. Ensure your nameplate model # matches.

Model Number:	5KGS449SAA224D2
Catalog Number:	M8999
Instruction Manual:	GEI-56128
Connection Diagram:	GEM2034E-FIG25
Outline Drawing:	239C6800FR

Accessory Connection Diagrams			
Bearing Thermocouple:	None	Heater:	None
RTD:	None	Thermistor:	None
Thermostat:	3027JE-2A	Winding Thermocouple:	None
Bearing RTD:	None		

Table of Contents

Specification	01
Performance Characteristics	02
Outline Drawing	03
Connection Drawing(s)	04
Spare parts	05

Marks:

MODEL NUMBER: 5KGS449SAA224D2
Outline Drawing: 239C6800FR
Connection Diagram: GEM2034E-FIG25
Instruction Book: GEI-56128
Design Code: 49BD1267A
Type: KGS
Frame: 449T
Phases: 3
Poles: 4
Output Power: 300HP 222KW
RPM: 1780
Voltage: 460
Hertz: 60
Amps - FL: 335.0
Service Factor: 1.00
Alt Service Factor: --

Estimated Weight: 3100 Lbs
Time Rating: CONT
Enclosure: TEFC
Encl Construction: X\$D
Ambient Max(°C): 40
Alt Ambient Max(°C): --
Insulation Class: H
NEMA Design: C
Nominal Efficiency: 96.2 %
Guaranteed Efficiency: 95.8 %
3/4 Load Efficiency: --
KVA Code: G
Max KVAR: 79.2
Power Factor: 87.0
Bearing - DE: NU 318
Bearing - ODE: 6318ZC3

Enclosure is Totally Enclosed Fan-Cooled

Stamped Nameplate Notes:

ROLLER BEARING - FOR BELTED LOAD ONLY
THERMOSTAT LEADS TB1-TB2 TRIP
STAMP NP249A5564P051 AS BELOW:
MODEL:5KGS449SAA224D2 S/N: XXX
CSA CERTIFIED CSA09.2216219 FOR EX NA IIC 230 C GC
CL 1 ZONE2 AEX NA IIC ---C;CL 1 DIV2 GRP ABCD 230C
IN -40C <= AMB <= 40C, 1.0 SF ON SINE-WAVE PWR
SURF TEMP ---C AT 1.00SF ON SINE-WAVE PWR
OR ---C VT OR ---C CT OR ---C CHP PWM CONTROL
ALTERNATE RATING FOR PWM CONTROL 1.0SF 40C AMB
VT 0 - 60 HZ, CT -- HZ, CHP -- HZ.



Additional Information:

4P - T EXTN - SPLIT LEAD
1260 CU IN - 2(4.00" NPT)
C/B GRD PLATE
OIL RESISTANT SLEEVING ON LEADS
B5F4C4 HIGH FATIGUE STEEL AISI 4142 SHAFT MATERIAL
N.C. TRIP TSTAT LDS TO MAIN CONDUIT BOX
F1 MOUNTING
CLASS F TEMP RISE @ 1.0 S.F



Performance Characteristics

1st Winding 1st Connection

Design: 49BD1267A

Marks:

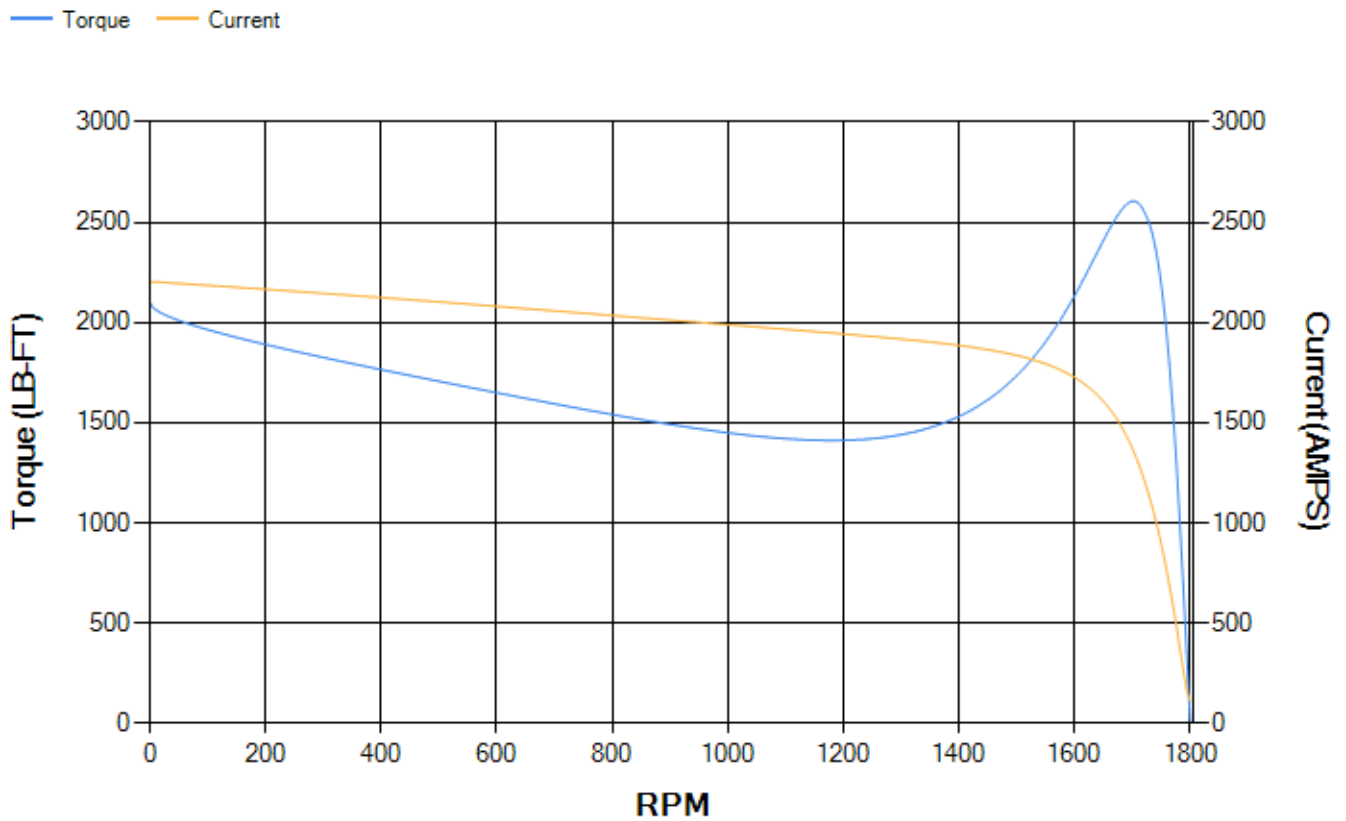
LOAD %	125.0	115.0	100.0	75.0	50.0	25.0	0.0
% EFF	95.63	95.85	96.32	96.42	96.31	94.75	0.00
% PF	88.22	87.92	87.06	83.84	75.76	54.06	2.92
AMPS	416.02	383.19	334.84	260.5	192.4	137.05	110.51

TORQ(FL)#FT	884.73	TORQ(LR)%FL	237.58	TORQ(BD)%FL	294.02
AMPS(LR)	2204.14	PF AT START	0.34		

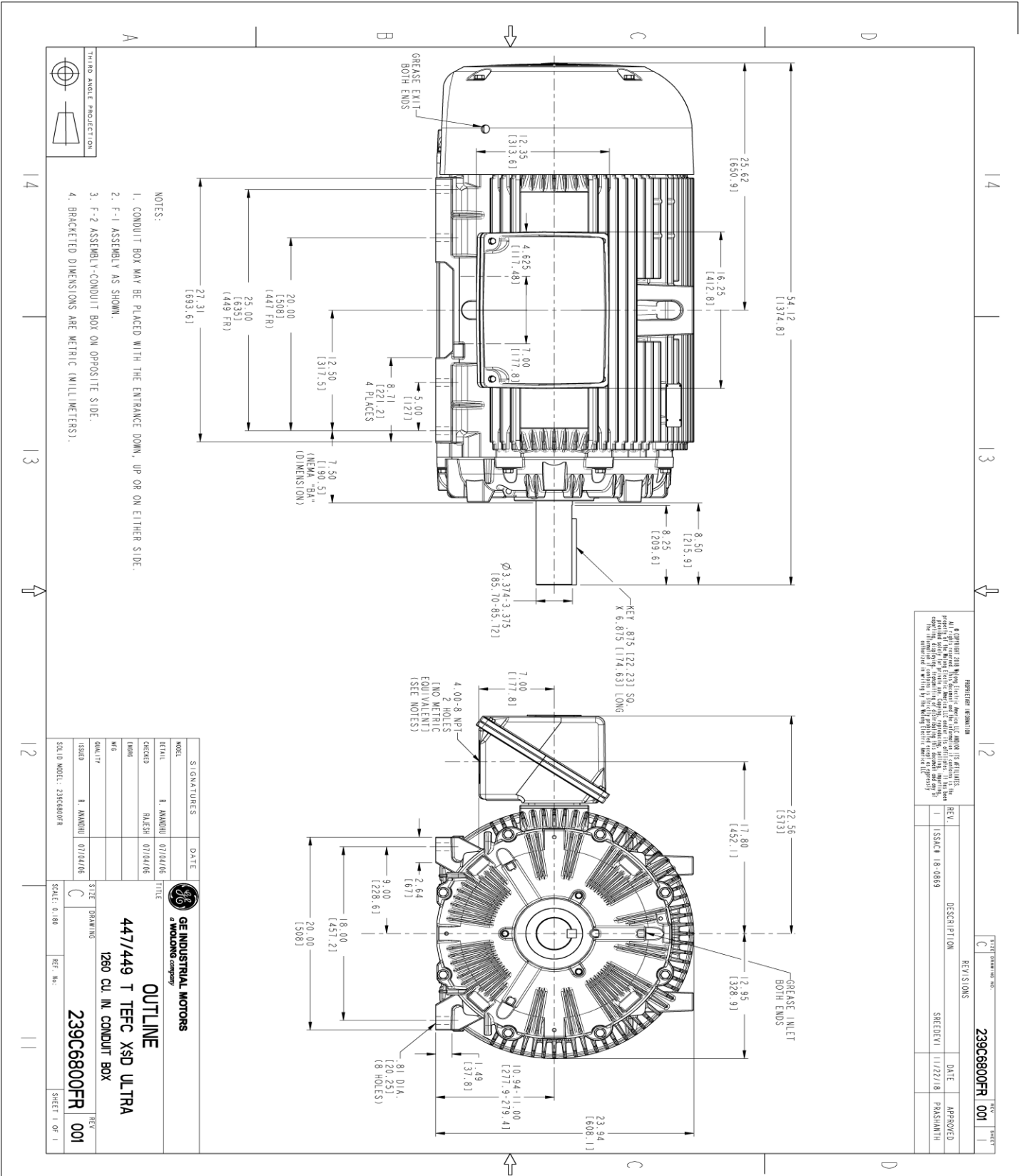
This motor is capable of two cold or one hot start with a maximum connected load inertia of 3454 Lb-Ft Sq (145.41 Kg-meter Sq)at 100% voltage, where the load torque varies with the square of the speed. Acceleration time with maximum inertia and the above load type is 15 seconds. Safe stall time at 100% voltage is 49 seconds cold, 18 seconds hot. Rotor inertia is 137.24 Lb-Ft Sq (5.78 Kg-meter Sq).

Open Circuit A-C:	0.71	Short Circuit D-C:	0.042
Short Circuit A-C:	0.031	X/R Ratio:	15.936
Stator Slots:	72	Rotor Slots:	58

Speed Torque Current Curve (First Connection, First Speed)



Marks:



REVISION INFORMATION		REV. DESCRIPTIONS		DATE		APPROVED	
1	ISSUE# 18-0869	SREDEVI	11/22/18	PRASHANTH			

NOTES:

- CONDUIT BOX MAY BE PLACED WITH THE ENTRANCE DOWN, UP OR ON EITHER SIDE.
- F-1 ASSEMBLY AS SHOWN.
- F-2 ASSEMBLY- CONDUIT BOX ON OPPOSITE SIDE.
- BRACKETED DIMENSIONS ARE METRIC (MILLIMETERS).



THIRD ANGLE PROJECTION

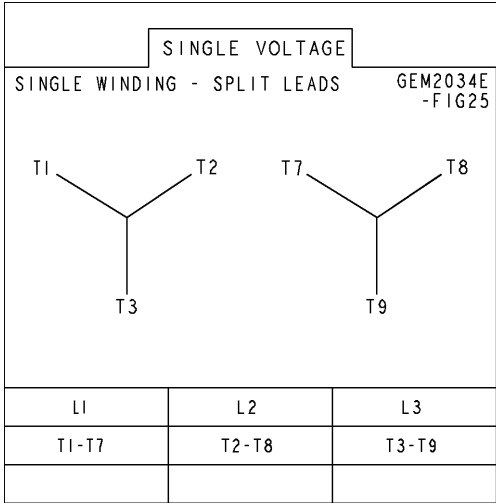
SIGNATURES	DATE	TITLE
MODEL: R. AMODI	01/04/06	GE INDUSTRIAL MOTORS
CHECKED: RAJESH	07/04/06	WOLONG COMPANY
DATE: 01/04/06		
ISSUED: R. AMODI	07/04/06	
SCALE: 0.180		
REF. NO:		
SIZE: C		
QUALITY: 239C6800FR		
REV: 001		

OUTLINE
447/449 T TEFC XSD ULTRA
1260 CU. IN. CONDUIT BOX

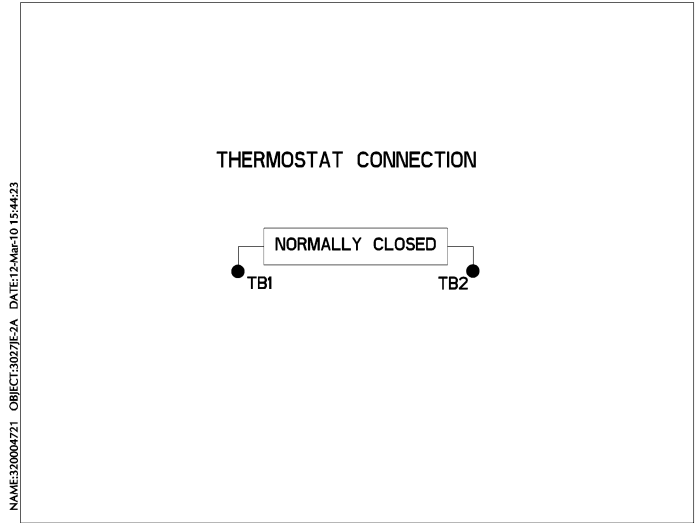
239C6800FR
001
SHEET 1 OF 1

Marks:

Connection Diagram
GEM2034E-FIG25



Thermostat Connection
3027JE-2A



End shield Assembly		
Part Description	DE Side Part#	ODE Side Part#
End Shield	115E4355AA1	115E4355LL1
Bearing	235A2519AA01	235A2514AG01
Slinger/Inproseal	149C4399G07	149C4399G07

Fan & Fan Cover Assembly	
Part Description	Part#
Fan	159C7100AA2
Fan Cover	128D6841AA1

Conduit & Accessories Box Assembly	
Part Description	Part#
Conduit Box	179B9058G03

Mechanical Accessories	
Part Description	Part#
Brake	
Tachometer	

