



GE INDUSTRIAL MOTORS
a **WOLONG** company

Product Technical Information

June 25, 2020

Data shown is for the current revision model #. Ensure your nameplate model # matches.

Model Number:	5KS445XAA100
Catalog Number:	M9004
Instruction Manual:	GEI-56128
Connection Diagram:	GEM2034E-FIG7
Outline Drawing:	239C6H01AF

Accessory Connection Diagrams

Bearing Thermocouple:	None	Heater:	None
RTD:	None	Thermistor:	None
Thermostat:	None	Winding Thermocouple:	None
Bearing RTD:	None		

Table of Contents

Specification	01
Performance Characteristics	02
Outline Drawing	03
Connection Drawing(s)	04
Spare parts	05

Marks:

MODEL NUMBER: 5KS445XAA100
Outline Drawing: 239C6H01AF
Connection Diagram: GEM2034E-FIG7
Instruction Book: GEI-56128
Design Code: 44BD0196A
Type: KS
Frame: 445TSC
Phases: 3
Poles: 2
Output Power: 150HP 111KW
RPM: 3580
Voltage: 460
Hertz: 60
Amps - FL: 163.0
Service Factor: 1.15
Alt Service Factor: --

Estimated Weight: 1990 Lbs
Time Rating: CONT
Enclosure: TEFC
Encl Construction: 841
Ambient Max(°C): 40
Alt Ambient Max(°C): --
Insulation Class: H
NEMA Design: B
Nominal Efficiency: 95.0 %
Guaranteed Efficiency: 94.5 %
3/4 Load Efficiency: --
KVA Code: G
Max KVAR: 27.6
Power Factor: 90.5
Bearing - DE: 6314ZC3
Bearing - ODE: 6314ZC3

Enclosure is Totally Enclosed Fan-Cooled

Stamped Nameplate Notes:

EXCEPTION TO IEEE-STD-841-2009: ESTIMATED
SOUND POWER LEVEL 92 DBA
DE BRG 70BC03JP30, ODE BRG 70BC03JP30
STAMP NP249A5564P051 AS BELOW:
MODEL:5KS445XAA100 S/N: XXX
CSA CERTIFIED CSA09.2216219 FOR EX NA IIC 200 C GC
CL 1 ZONE2 AEX NA IIC 200C;CL 1 DIV2 GRP ABCD 200C
IN -25C <= AMB <= 40C, 1.0 SF ON SINE-WAVE PWR
SURF TEMP 200C AT 1.15SF ON SINE-WAVE PWR
OR 200C VT OR 230C CT OR --C CHP PWM CONTROL
ALTERNATE RATING FOR PWM CONTROL 1.0SF 40C AMB
VT 0 - 60 HZ, CT 6 - 60 HZ, CHP -- HZ.



Additional Information:

2P - TS EXTN
PAINTED FRAME ID & SHAFT,
FAN COVER INSIDE & ODE E/S OUTSIDE
C FACE WITH 16.00 RABBIT ON DE
C/BOX 700 CU IN - 3.00" NPT
INPRO SEAL BOTH ENDS
OIL RESISTANT SLEEVING ON LEADS
.0015" TIR SHAFT RUNOUT
ROUTINE TEST REPORT AND 5 POINT VIBRATION TEST
REPORT INCLUDED IN C/B
COPPER WASHER UNDER HEADS OF BEARING CAP BOLTS,
APPLY TITE-SEAL (A50CD427A) ON BEARING CAP SCREWS,
RABBETS AND PLUG THREADS.
GROUND PAD
F1 MOUNTING



Performance Characteristics

1st Winding 1st Connection

Design: 44BD0196A

Marks:

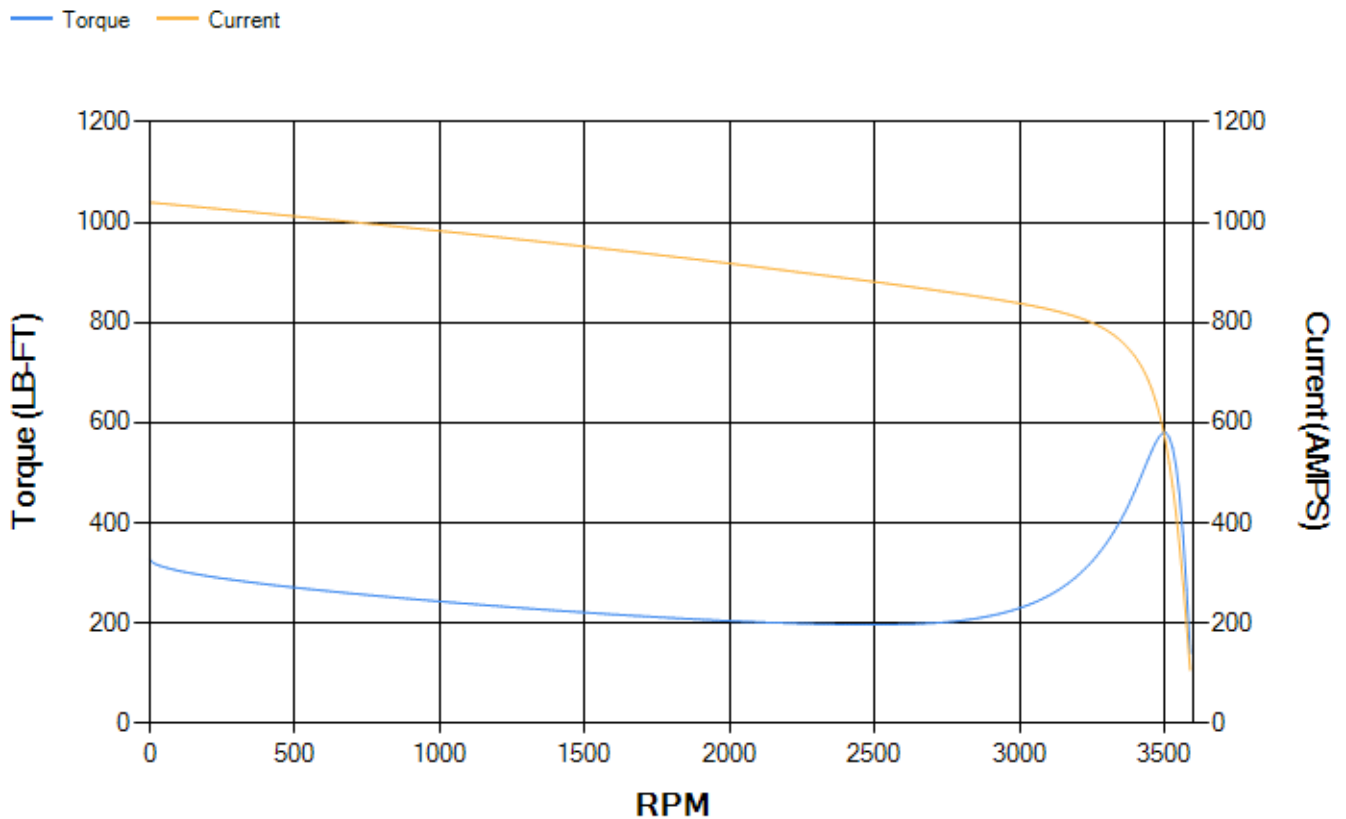
LOAD %	125.0	115.0	100.0	75.0	50.0	25.0	0.0
% EFF	94.93	95.08	95.44	95.23	94.54	91.39	0.00
% PF	90.71	90.82	90.71	89.37	84.76	68.41	7.71
AMPS	203.81	186.97	162.18	123.72	87.61	56.14	38.49

TORQ(FL)#FT	220.08	TORQ(LR)%FL	148.96	TORQ(BD)%FL	263.64
AMPS(LR)	1039.83	PF AT START	0.21		

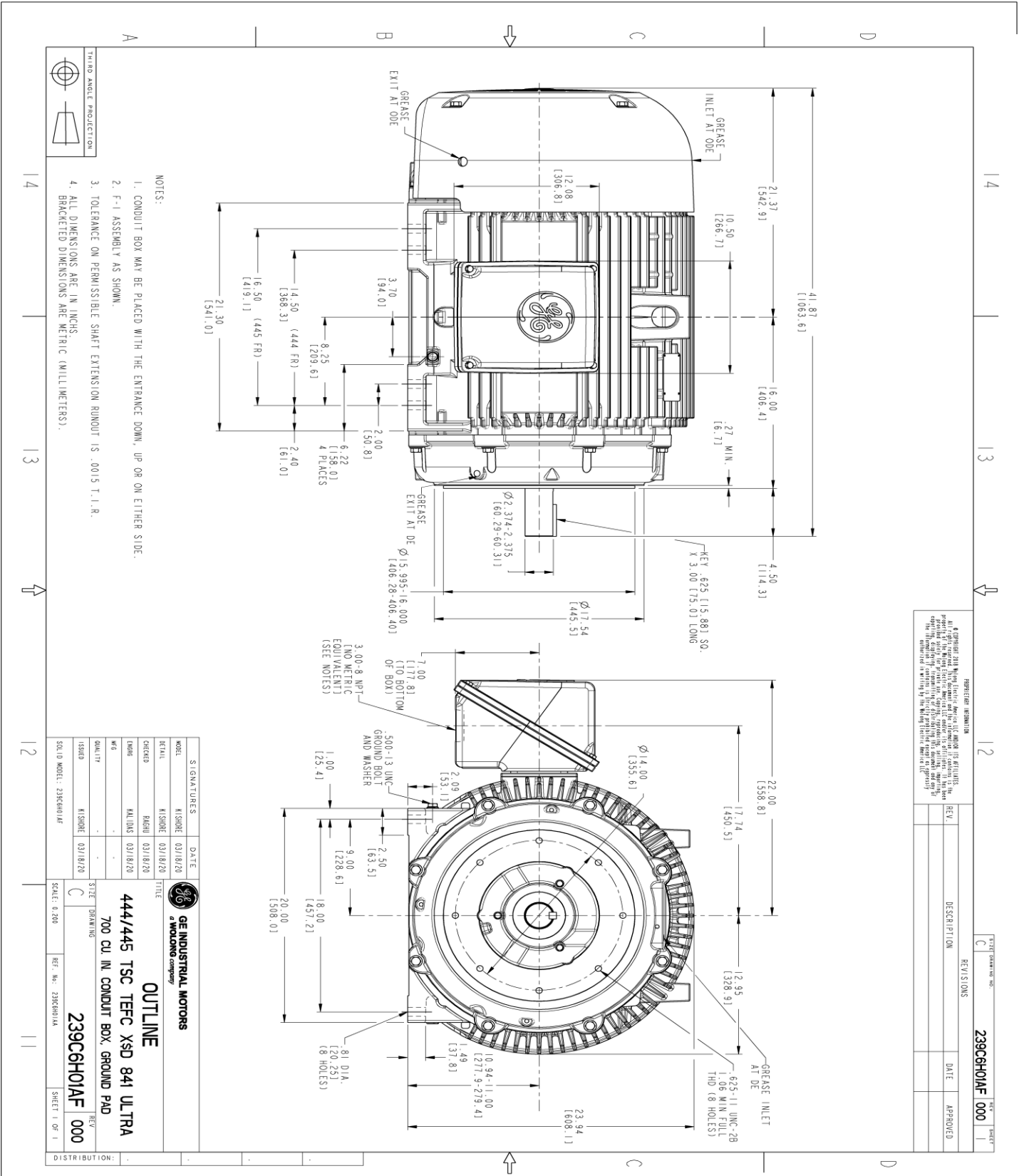
This motor is capable of two cold or one hot start with a maximum connected load inertia of 488 Lb-Ft Sq (20.54 Kg-meter Sq)at 100% voltage, where the load torque varies with the square of the speed. Acceleration time with maximum inertia and the above load type is 33 seconds. Safe stall time at 100% voltage is 74 seconds cold, 40 seconds hot. Rotor inertia is 29.46 Lb-Ft Sq (1.24 Kg-meter Sq).

Open Circuit A-C:	1.863	Short Circuit D-C:	0.037
Short Circuit A-C:	0.072	X/R Ratio:	13.805
Stator Slots:	48	Rotor Slots:	38

Speed Torque Current Curve (First Connection, First Speed)



Marks:



REV.	DESCRIPTION	DATE	APPROVED

NOTES:
 1. CONDUIT BOX MAY BE PLACED WITH THE ENTRANCE DOWN, UP OR ON EITHER SIDE.
 2. F-1 ASSEMBLY AS SHOWN.
 3. TOLERANCE ON PERMISSIBLE SHAFT EXTENSION ROUND IS .0015 T.I.R.
 4. ALL DIMENSIONS ARE IN INCHS.
 BRACKETED DIMENSIONS ARE METRIC (MILLIMETERS).



SIGNATURES	DATE	
MODEL KISHORE 03/18/20		
REVIEW KISHORE 03/18/20		
CHECKED BISHU 03/18/20		
DRAWN MALHONS 03/18/20		
WCS		
QUALITY		
ISSUED KISHORE 03/18/20		

GE INDUSTRIAL MOTORS
A WOLONG COMPANY

OUTLINE
444/445 TSC TFC XSD 841 ULTRA
700 CU IN CONDUIT BOX, GROUND PAD

239C6H01A1F 000

SCALE: 0.200 REF: No. 239C6H01A4 SHEET 1 OF 1

Marks:

Connection Diagram
GEM2034E-FIG7



End shield Assembly		
Part Description	DE Side Part#	ODE Side Part#
End Shield	115E4357KA1	115E4354LL1
Bearing	235A2516AC01	235A2516AC01
Slinger/Inproseal	235A4575GS3	235A4575GS3

Fan & Fan Cover Assembly	
Part Description	Part#
Fan	159C7100AA1
Fan Cover	128D6841MA1

Conduit & Accessories Box Assembly	
Part Description	Part#
Conduit Box	118D4408AD2

Mechanical Accessories	
Part Description	Part#
Brake	
Tachometer	

