



GE INDUSTRIAL MOTORS
a **WOLONG** company

Product Technical Information

June 25, 2020

Data shown is for the current revision model #. Ensure your nameplate model # matches.

Model Number:	5KS444XAA200
Catalog Number:	M9010
Instruction Manual:	GEI-56128
Connection Diagram:	GEM2034E-FIG7
Outline Drawing:	239C6601EW

Accessory Connection Diagrams

Bearing Thermocouple:	None	Heater:	None
RTD:	None	Thermistor:	None
Thermostat:	None	Winding Thermocouple:	None
Bearing RTD:	None		

Table of Contents

Specification	01
Performance Characteristics	02
Outline Drawing	03
Connection Drawing(s)	04
Spare parts	05

Marks:

MODEL NUMBER:	5KS444XAA200	Estimated Weight:	1900 Lbs
Outline Drawing:	239C6601EW	Time Rating:	CONT
Connection Diagram:	GEM2034E-FIG7	Enclosure:	TEFC
Instruction Book:	GEI-56128	Encl Construction:	841
Design Code:	44BD1173A	Ambient Max(°C):	40
Type:	KS	Alt Ambient Max(°C):	--
Frame:	444TC	Insulation Class:	H
Phases:	3	NEMA Design:	B
Poles:	4	Nominal Efficiency:	95.4 %
Output Power:	125HP 92.5KW	Guaranteed Efficiency:	95.0 %
RPM:	1785	3/4 Load Efficiency:	--
Voltage:	460	KVA Code:	G
Hertz:	60	Max KVAR:	36.8
Amps - FL:	143.0	Power Factor:	86.0
Service Factor:	1.15	Bearing - DE:	6318ZC3
Alt Service Factor:	--	Bearing - ODE:	6318ZC3

Enclosure is Totally Enclosed Fan-Cooled

Stamped Nameplate Notes:

EXCEPTION TO IEEE-STD-841-2009: SOUND POWER 93 DBA
 DE BRG 90BC03JP3, ODE BRG 90BC03JP3
 STAMP NP249A5564P051 AS BELOW:
 MODEL:5KS444XAA200 S/N: XXX
 CSA CERTIFIED CSA09.2216219 FOR EX NA IIC 200 C GC
 CL 1 ZONE2 AEX NA IIC 200C;CL 1 DIV2 GRP ABCD 200C
 IN -25C <= AMB <= 40C, 1.0 SF ON SINE-WAVE PWR
 SURF TEMP 200C AT 1.15SF ON SINE-WAVE PWR
 OR 200C VT OR 215C CT OR 200C CHP PWM CONTROL
 ALTERNATE RATING FOR PWM CONTROL 1.0SF 40C AMB
 VT 0 - 60 HZ, CT 7.6 - 60 HZ, CHP 60 - 90 HZ.



Additional Information:

4P - T EXTN
PAINTED FRAME ID & SHAFT,
FAN COVER INSIDE & ODE E/S OUTSIDE
C FACE WITH 16.00 RABBIT ON DE
C/BOX 700 CU IN - 3.00" NPT
INPRO SEAL BOTH ENDS
OIL RESISTANT SLEEVING ON LEADS
.0015" TIR SHAFT RUNOUT
ROUTINE TEST REPORT AND 5 POINT VIBRATION TEST
REPORT INCLUDED IN C/B
COPPER WASHER UNDER HEADS OF BEARING CAP BOLTS,
APPLY TITE-SEAL (A50CD427A) ON BEARING CAP SCREWS,
RABBETS AND PLUG THREADS.
GROUND PAD
F1 MOUNTING



Performance Characteristics

1st Winding 1st Connection

Design: 44BD1173A

Marks:

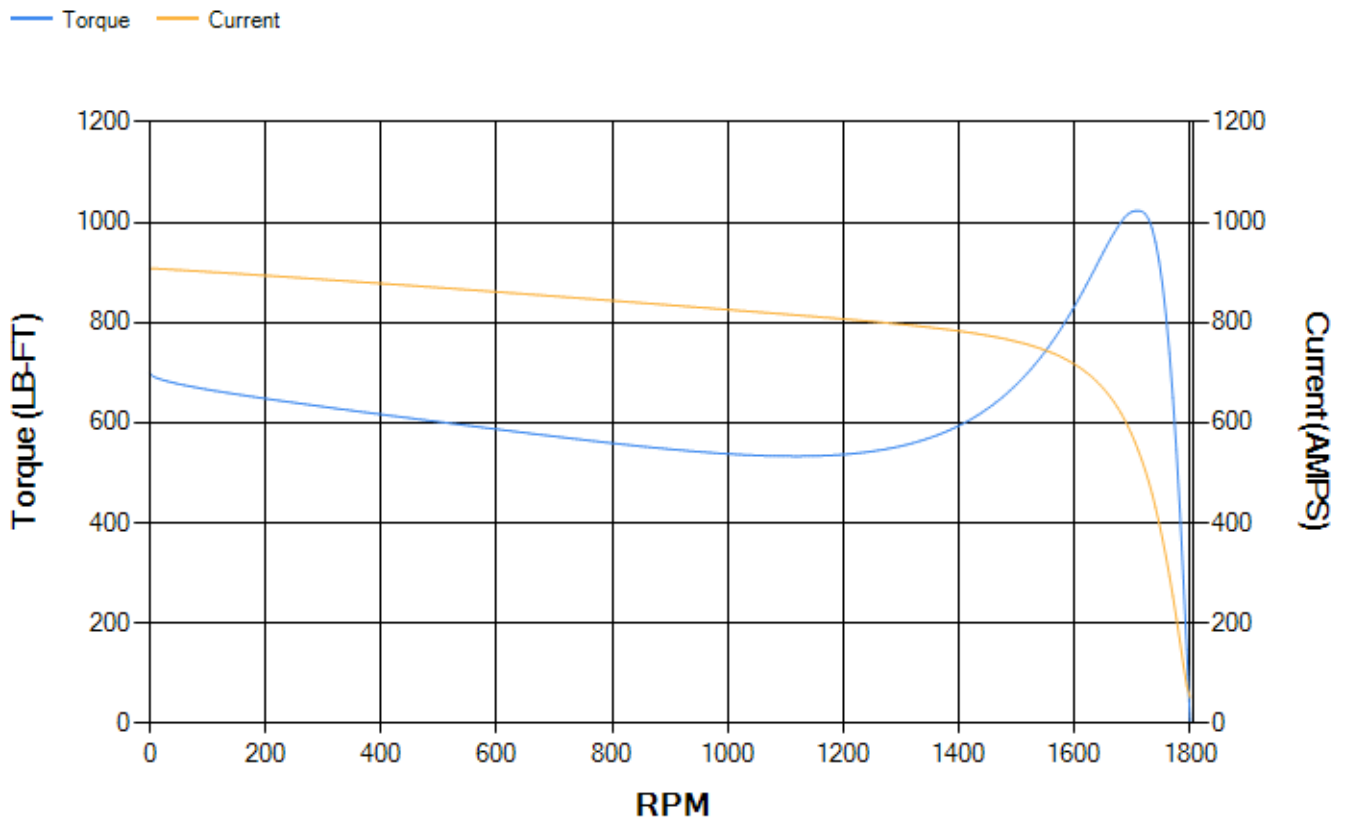
LOAD %	125.0	115.0	100.0	75.0	50.0	25.0	0.0
% EFF	95.01	95.15	95.5	95.29	94.61	91.52	0.00
% PF	87.26	86.84	85.78	82.07	73.27	51.45	4.69
AMPS	176.4	162.82	142.82	112.19	84.38	62.12	51.35

TORQ(FL)#FT	367.81	TORQ(LR)%FL	190.07	TORQ(BD)%FL	277.77
AMPS(LR)	908.4	PF AT START	0.32		

This motor is capable of two cold or one hot start with a maximum connected load inertia of 2709 Lb-Ft Sq (114.05 Kg-meter Sq)at 100% voltage, where the load torque varies with the square of the speed. Acceleration time with maximum inertia and the above load type is 32 seconds. Safe stall time at 100% voltage is 60 seconds cold, 38 seconds hot. Rotor inertia is 55.91 Lb-Ft Sq (2.35 Kg-meter Sq).

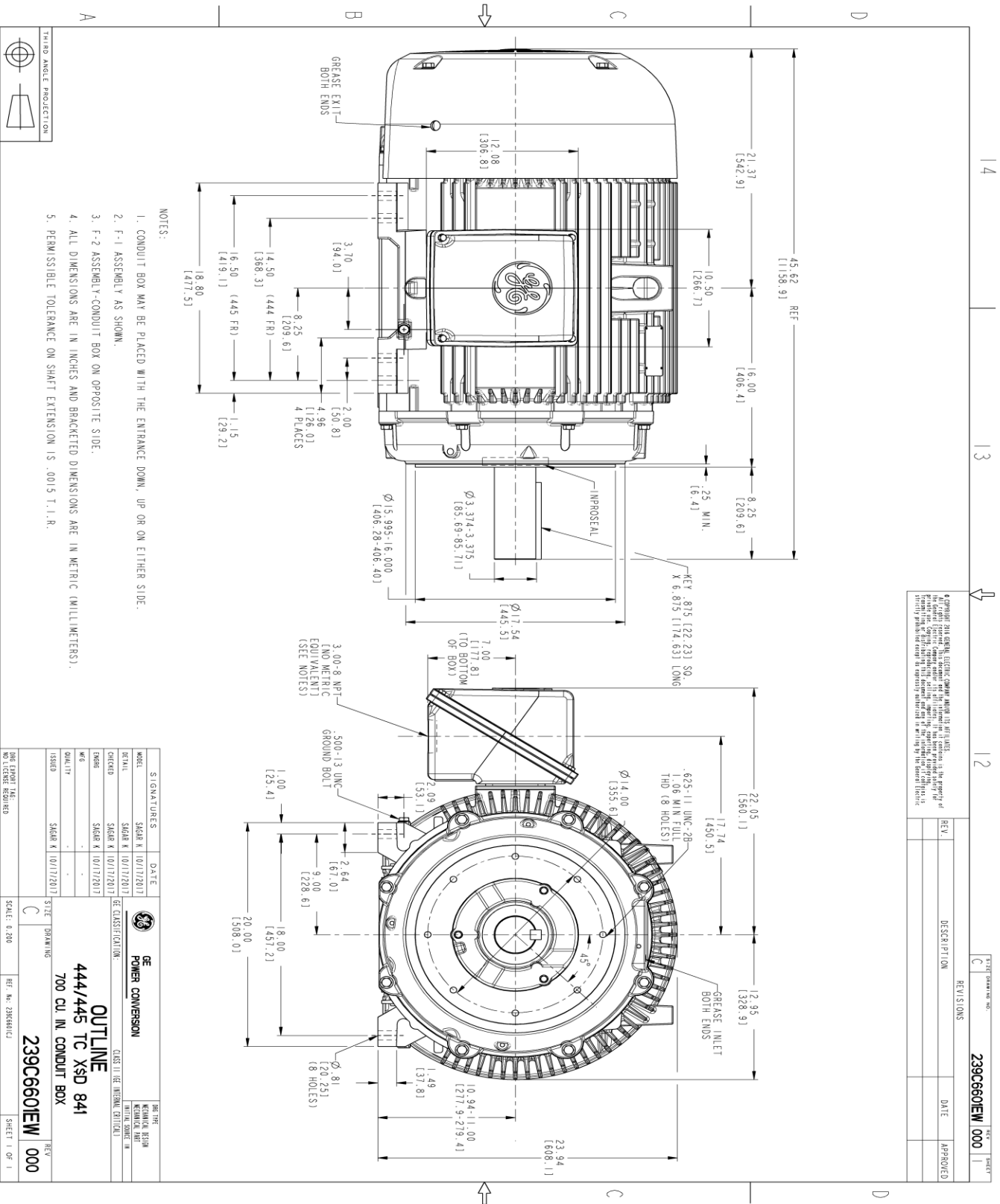
Open Circuit A-C:	0.81	Short Circuit D-C:	0.031
Short Circuit A-C:	0.042	X/R Ratio:	11.542
Stator Slots:	72	Rotor Slots:	58

Speed Torque Current Curve (First Connection, First Speed)



Marks:

SOLID MODEL: 239C6601EW



REV.	DESCRIPTION	DATE	APPROVED

TITLE DRAWING NO. **239C6601EW 000**

NOTES:

- CONDUIT BOX MAY BE PLACED WITH THE ENTRANCE DOWN, UP OR ON EITHER SIDE.
- F-1 ASSEMBLY AS SHOWN.
- F-2 ASSEMBLY-CONDUIT BOX ON OPPOSITE SIDE.
- ALL DIMENSIONS ARE IN INCHES AND BRACKETED DIMENSIONS ARE IN METRIC (MILLIMETERS).
- PERMISSIBLE TOLERANCE ON SHAFT EXTENSION IS .0015 T.I.R.



SIGNATURES	DATE	REV.	DESCRIPTION

GE POWER CONVERSION

OUTLINE
444/445 TC XSD 841
700 CU IN CONDUIT BOX

239C6601EW 000

SCALE: 0:200

SHEET 1 OF 1

Marks:

Connection Diagram
GEM2034E-FIG7



End shield Assembly		
Part Description	DE Side Part#	ODE Side Part#
End Shield	115E4357AA1	115E4355LM1
Bearing	235A2514AG01	235A2514AG01
Slinger/Inproseal	235A4575GS5	235A4575GS5

Fan & Fan Cover Assembly	
Part Description	Part#
Fan	159C7100G02
Fan Cover	128D6841AA1

Conduit & Accessories Box Assembly	
Part Description	Part#
Conduit Box	118D4408AD2

Mechanical Accessories	
Part Description	Part#
Brake	
Tachometer	

