



GE INDUSTRIAL MOTORS
a **WOLONG** company

Product Technical Information

February 17, 2023

Data shown is for the current revision model #. Ensure your nameplate model # matches.

Model Number:	5KS405XAA2132
Catalog Number:	M9017
Instruction Manual:	GEI-56128
Connection Diagram:	GEM2034E-FIG7
Outline Drawing:	239C6405BY

Accessory Connection Diagrams

Bearing Thermocouple:	None	Heater:	None
RTD:	None	Thermistor:	None
Thermostat:	None	Winding Thermocouple:	None
Bearing RTD:	None		

Table of Contents

Specification	01
Performance Characteristics	02
Outline Drawing	03
Connection Drawing(s)	04
Spare parts	05

Marks:

MODEL NUMBER:	5KS405XAA2132	Estimated Weight:	1440 Lbs
Outline Drawing:	239C6405BY	Time Rating:	CONT
Connection Diagram:	GEM2034E-FIG7	Enclosure:	TEFC
Instruction Book:	GEI-56128	Encl Construction:	841
Design Code:	40BD1112B	Ambient Max(°C):	40
Type:	KS	Alt Ambient Max(°C):	--
Frame:	405TSC	Insulation Class:	H
Phases:	3	NEMA Design:	B
Poles:	4	Nominal Efficiency:	95.4 %
Output Power:	100HP 74KW	Guaranteed Efficiency:	95.0 %
RPM:	1785	3/4 Load Efficiency:	95.6 %
Voltage:	575	KVA Code:	G
Hertz:	60	Max KVAR:	35.9
Amps - FL:	97.5	Power Factor:	80.5
Service Factor:	1.15	Bearing - DE:	6316ZC3S0
Alt Service Factor:	--	Bearing - ODE:	6316ZC3S0

Enclosure is Totally Enclosed Fan-Cooled

Stamped Nameplate Notes:

IEEE-STD-841-2009
 DE BRG 80BC03JP3026, ODE BRG 80BC03JP3026
 INVERTER DUTY PER NEMA MG1 PART 31
 ALTERNATE RATING FOR PWM CONTROL:1.0SF 40C AMBIENT
 VAR TORQUE RANGE 0-60 HZ
 MAX EXPOSED INTERNAL AND EXTERNAL SURFACE
 TEMPERATURES UNDER USUAL SERVICE CONDITIONS
 AT 1.00 S.F. DO NOT EXCEED 200 DEG C
 STAMP NP249A5499AP AS BELOW:
 MODEL:5KS405XAA2132 S/N: XXX
 EX NA IIC T3 GC CSA.09.2216219
 CLASS I, ZONE 2, AEX NA IIC T3
 CLASS I, DIV 2, GROUPS A, B, C, D T3
 -25C <= TAMB <= 40C



Additional Information:

4P - TS EXTN
PAINTED FRAME ID & SHAFT,
FAN COVER INSIDE & ODE E/S OUTSIDE
C FACE WITH 12.50 RABBIT ON DE
C/BOX 700 CU IN - 3.00" NPT
INPRO SEAL BOTH ENDS
OIL RESISTANT SLEEVING ON LEADS
.0015" TIR SHAFT RUNOUT
ROUTINE TEST REPORT AND 5 POINT VIBRATION TEST
REPORT INCLUDED IN C/B
COPPER WASHER UNDER HEADS OF BEARING CAP BOLTS,
APPLY TITE-SEAL (A50CD427A) ON BEARING CAP SCREWS,
RABBETS AND PLUG THREADS.
ROUND FRAME
GROUND PAD



Performance Characteristics

1st Winding 1st Connection

Design: 40BD1112B

Marks:

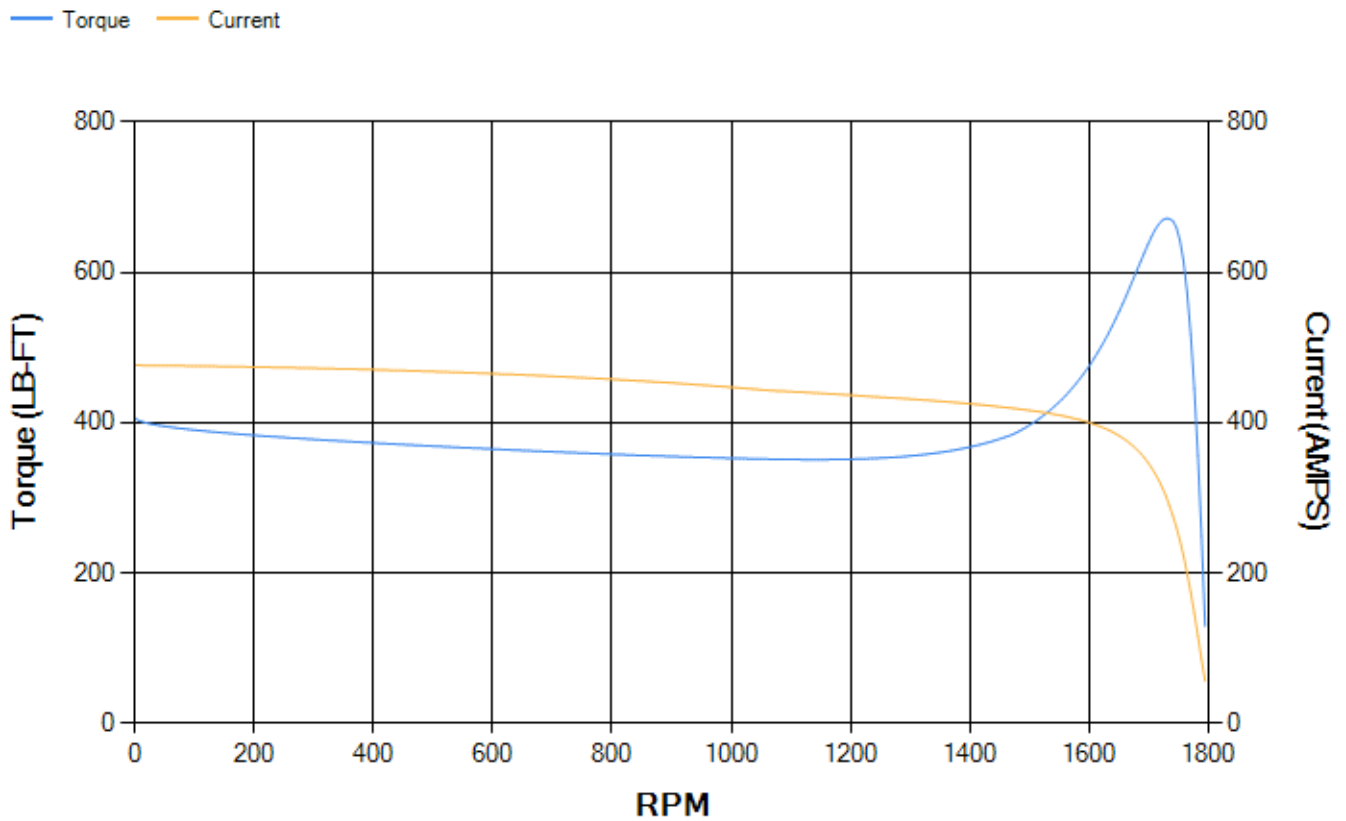
LOAD %	125.0	115.0	100.0	75.0	50.0	25.0	0.0
% EFF	94.96	95.17	95.61	95.58	95.16	92.65	0.00
% PF	82.4	81.96	80.7	76.24	66.13	43.81	3.17
AMPS	119.61	110.4	97.04	77.06	59.5	46.12	40.07

TORQ(FL)#FT	294.21	TORQ(LR)%FL	138.39	TORQ(BD)%FL	228.11
AMPS(LR)	476.36	PF AT START	0.29		

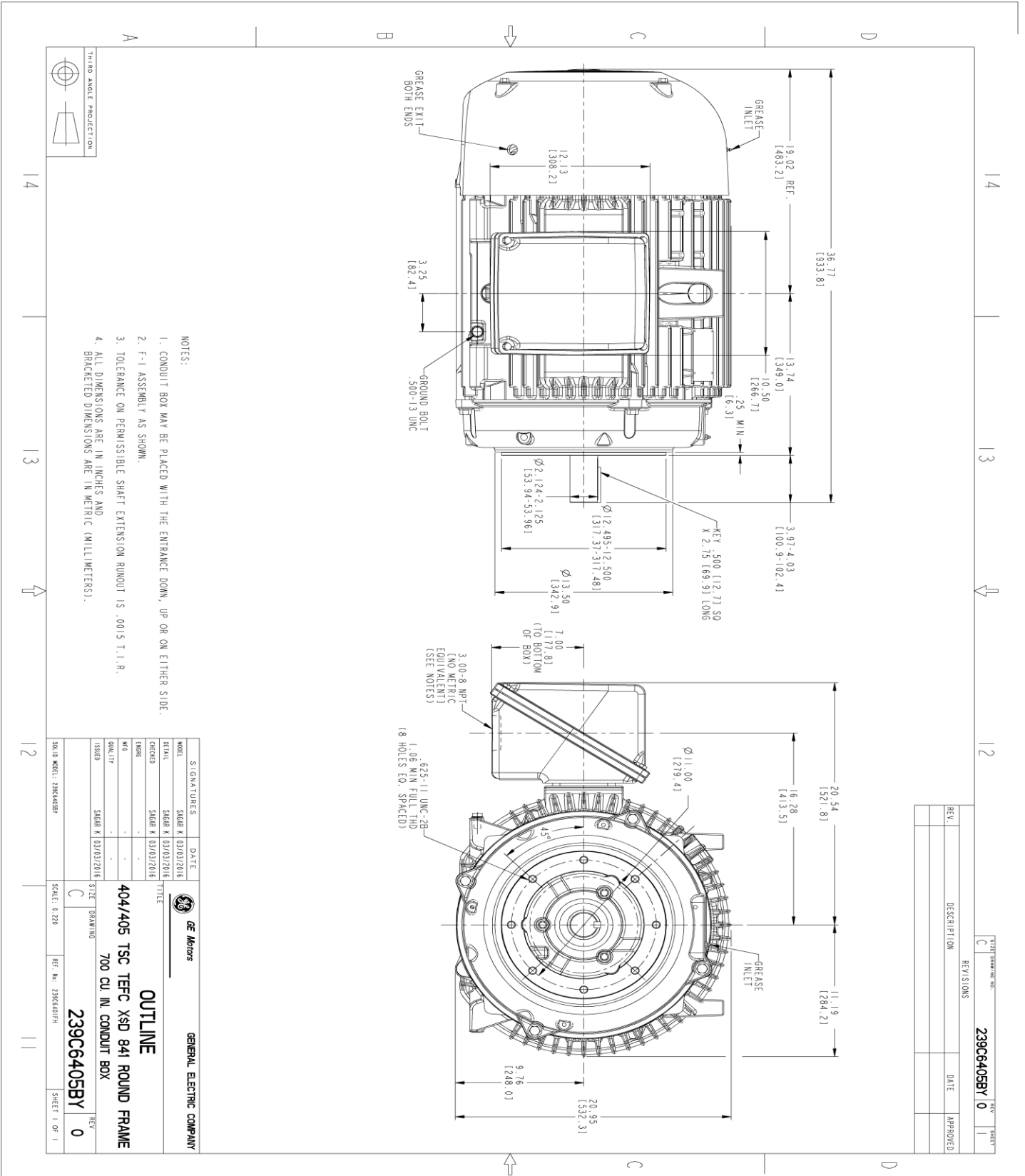
This motor is capable of two cold or one hot start with a maximum connected load inertia of 2447 Lb-Ft Sq (103.02 Kg-meter Sq)at 100% voltage, where the load torque varies with the square of the speed. Acceleration time with maximum inertia and the above load type is 49 seconds. Safe stall time at 100% voltage is 106 seconds cold, 59 seconds hot. Rotor inertia is 21.53 Lb-Ft Sq (0.91 Kg-meter Sq).

Open Circuit A-C:	0.708	Short Circuit D-C:	0.033
Short Circuit A-C:	0.05	X/R Ratio:	12.575
Stator Slots:	72	Rotor Slots:	58

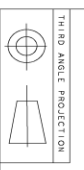
Speed Torque Current Curve (First Connection, First Speed)



Marks:



- NOTES:
1. CONDUIT BOX MAY BE PLACED WITH THE ENTRANCE DOWN, UP OR ON EITHER SIDE.
 2. F-I ASSEMBLY AS SHOWN.
 3. TOLERANCE ON PERMISSIBLE SHAFT EXTENSION RUNOUT IS .0015 T.I.R.
 4. ALL DIMENSIONS ARE IN INCHES AND BRACKETED DIMENSIONS ARE IN METRIC (MILLIMETERS).



TITLE		239C6405BY 0	
REV. DESCRIPTION		DATE APPROVED	
REV.		DATE	APPROVED

SIGNATURES	DATE	 GENERAL ELECTRIC COMPANY
MODEL: SIKR K [53032016]		
DETAIL: SIKR K [53032016]		OUTLINE 404/405 TSC TEFC XSD 841 ROUND FRAME 700 CU IN. CONDUIT BOX 239C6405BY 0
CHECKED: SIKR K [53032016]		
DESIGN: SIKR K [53032016]		
QUALITY: SIKR K [53032016]		
ISSUED: SIKR K [53032016]		SCALE: 0.210
SOLID MODEL: 239C6405BY		REF. NO.: 239C6405BY
SHEET 1 OF 1		

Marks:

Connection Diagram
GEM2034E-FIG7



End shield Assembly		
Part Description	DE Side Part#	ODE Side Part#
End Shield	115E4303AA1	115E4304LL1
Bearing	235A2618AA04	235A2618AA04
Slinger/Inproseal	235A4575GS4	235A4575GS4

Fan & Fan Cover Assembly	
Part Description	Part#
Fan	159C7100AA2
Fan Cover	128D6832AA1

Conduit & Accessories Box Assembly	
Part Description	Part#
Conduit Box	118D4408AD2

Mechanical Accessories	
Part Description	Part#
Brake	
Tachometer	

