



GE INDUSTRIAL MOTORS
a **WOLONG** company

Product Technical Information

September 8, 2022

Data shown is for the current revision model #. Ensure your nameplate model # matches.

Model Number:	5KS447XAA218A
Catalog Number:	M9110
Instruction Manual:	GEI-56128
Connection Diagram:	GEM2034E-FIG7
Outline Drawing:	239C6800VY

Accessory Connection Diagrams

Bearing Thermocouple:	None	Heater:	None
RTD:	None	Thermistor:	None
Thermostat:	None	Winding Thermocouple:	None
Bearing RTD:	None		

Table of Contents

Specification	01
Performance Characteristics	02
Outline Drawing	03
Connection Drawing(s)	04
Spare parts	05

Marks:

MODEL NUMBER: 5KS447XAA218A
Outline Drawing: 239C6800VY
Connection Diagram: GEM2034E-FIG7
Instruction Book: GEI-56128
Design Code: 49BD1177A
Type: KS
Frame: 447TS
Phases: 3
Poles: 4
Output Power: 200HP 148KW
RPM: 1790
Voltage: 460
Hertz: 60
Amps - FL: 219.0
Service Factor: 1.15
Alt Service Factor: --

Estimated Weight: 2770 Lbs
Time Rating: CONT
Enclosure: TEFC
Encl Construction: 841
Ambient Max(°C): 40
Alt Ambient Max(°C): --
Insulation Class: H
NEMA Design: B
Nominal Efficiency: 96.2 %
Guaranteed Efficiency: 95.8 %
3/4 Load Efficiency: --
KVA Code: G
Max KVAR: 43.5
Power Factor: 89.0
Bearing - DE: 6318ZC3
Bearing - ODE: 6318ZC3

Enclosure is Totally Enclosed Fan-Cooled

Stamped Nameplate Notes:

IEEE-STD-841-2009
 DE BRG 90BC03JP3, ODE BRG 90BC03JP3
 STAMP NP249A5564P051 AS BELOW:
 MODEL:5KS447XAA218A S/N: XXX
 CSA CERTIFIED CSA09.2216219 FOR EX NA IIC 200 C GC
 CL 1 ZONE2 AEX NA IIC 200C;CL 1 DIV2 GRP ABCD 200C
 IN -25C <= AMB <= 40C, 1.0 SF ON SINE-WAVE PWR
 SURF TEMP 215C AT 1.15SF ON SINE-WAVE PWR
 OR 200C VT OR 200C CT OR 200C CHP PWM CONTROL
 ALTERNATE RATING FOR PWM CONTROL 1.0SF 40C AMB
 VT 0 - 60 HZ, CT 45-60 HZ, CHP 60-75 HZ.



Additional Information:

4P - TS EXTN
PAINTED FRAME ID & SHAFT,
FAN COVER INSIDE & ODE E/S OUTSIDE
C/BOX 700 CU IN - 3.00" NPT
INPRO SEAL BOTH ENDS
OIL RESISTANT SLEEVING ON LEADS
.0015" TIR SHAFT RUNOUT
ROUTINE TEST REPORT AND 5 POINT VIBRATION TEST
REPORT INCLUDED IN C/B
COPPER WASHER UNDER HEADS OF BEARING CAP BOLTS,
APPLY TITE-SEAL (A50CD427A) ON BEARING CAP SCREWS,
RABBETS AND PLUG THREADS.
GROUND PAD
F1 MOUNTING



Performance Characteristics

1st Winding 1st Connection

Design: 49BD1177A

Marks:

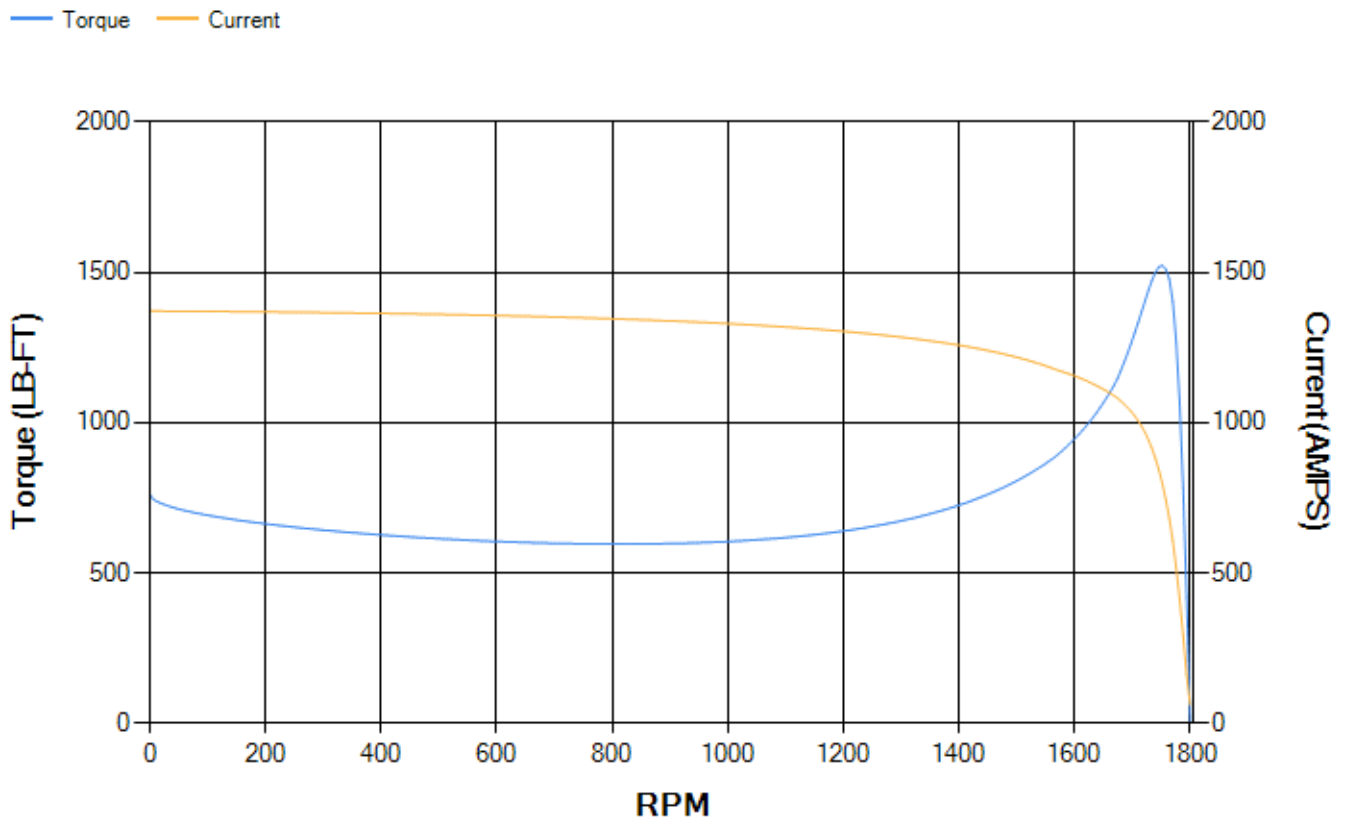
LOAD %	125.0	115.0	100.0	75.0	50.0	25.0	0.0
% EFF	95.58	95.82	96.34	96.52	96.53	95.25	0.00
% PF	89.2	89.16	88.76	86.63	80.37	60.76	3.08
AMPS	274.46	251.96	218.92	167.91	120.64	80.86	60.67

TORQ(FL)#FT	586.55	TORQ(LR)%FL	130.07	TORQ(BD)%FL	259.52
AMPS(LR)	1371.64	PF AT START	0.25		

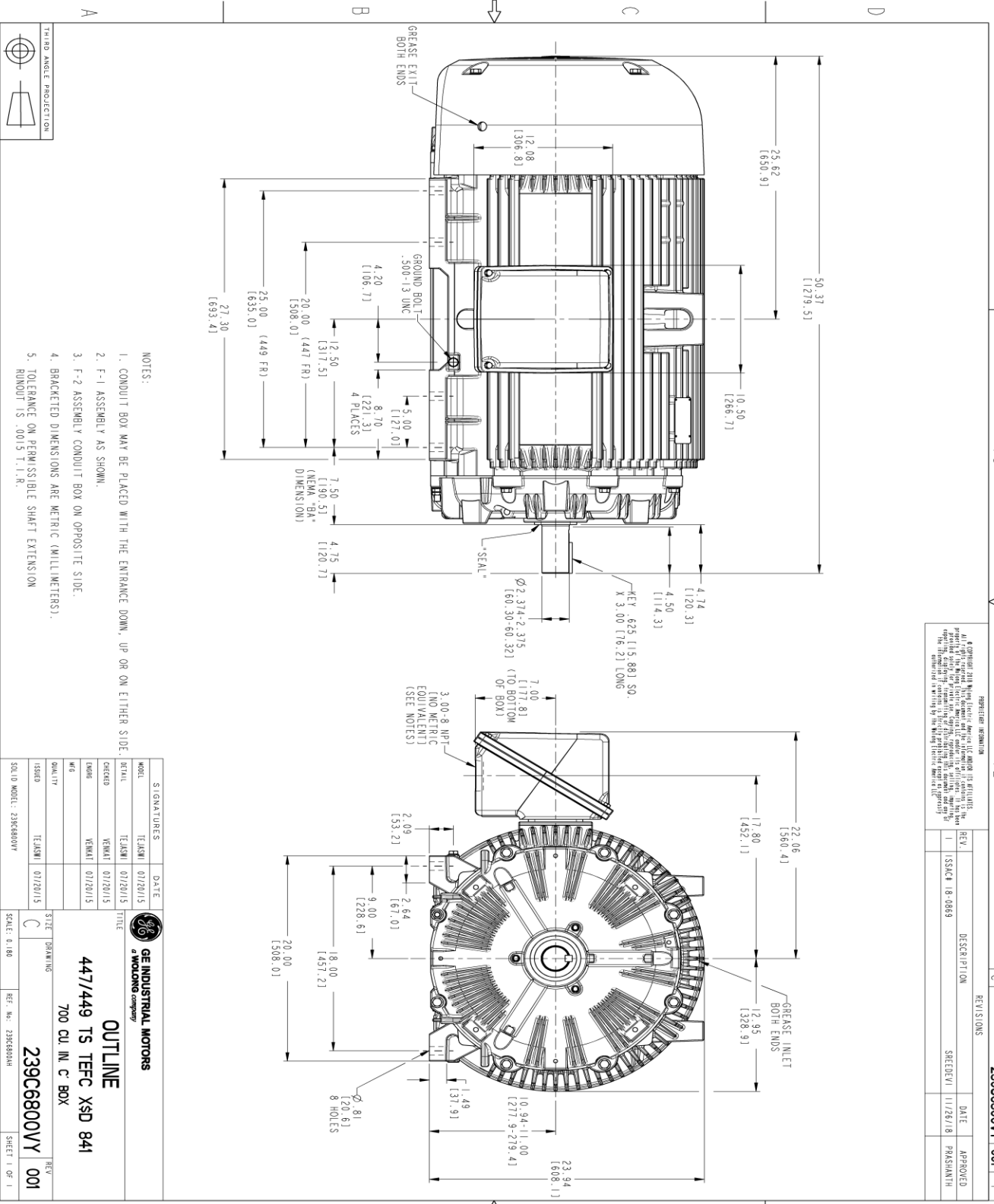
This motor is capable of two cold or one hot start with a maximum connected load inertia of 4712 Lb-Ft Sq (198.38 Kg-meter Sq)at 100% voltage, where the load torque varies with the square of the speed. Acceleration time with maximum inertia and the above load type is 54 seconds. Safe stall time at 100% voltage is 163 seconds cold, 84 seconds hot. Rotor inertia is 105.05 Lb-Ft Sq (4.42 Kg-meter Sq).

Open Circuit A-C:	1.749	Short Circuit D-C:	0.027
Short Circuit A-C:	0.07	X/R Ratio:	10.252
Stator Slots:	72	Rotor Slots:	58

Speed Torque Current Curve (First Connection, First Speed)



Marks:



PROHIBITION INFORMATION

of GE Industrial Motors, Electric America LLC and/or its affiliates. No part of this drawing may be reproduced, stored in a retrieval system, or transmitted in any form or by any means, electronic, mechanical, photocopying, recording, or otherwise, without the prior written permission of GE Industrial Motors, Electric America LLC. The information contained herein is the property of GE Industrial Motors, Electric America LLC and is not to be distributed or used in any manner without the express written permission of GE Industrial Motors, Electric America LLC.

REV.	DESCRIPTION	DATE	APPROVED
1	ISSUE 18-0869	11/26/18	PRASHANTH

REV'S/DIMS	DATE	APPROVED
C	07/20/15	

239C6800VY 001

- NOTES:
1. CONDUIT BOX MAY BE PLACED WITH THE ENTRANCE DOWN, UP OR ON EITHER SIDE.
 2. F-1 ASSEMBLY AS SHOWN.
 3. F-2 ASSEMBLY CONDUIT BOX ON OPPOSITE SIDE.
 4. BRACKETED DIMENSIONS ARE METRIC (MILLIMETERS).
 5. TOLERANCE ON PERMISSIBLE SHAFT EXTENSION RUNOUT IS .0015 T.I.R.

SIGNATURES	DATE	TITLE
DESIGNER	07/20/15	GE INDUSTRIAL MOTORS A WOLSKONG COMPANY
CHECKED	07/20/15	OUTLINE
DATE	07/20/15	447/449 TS TEFC XSD 841
DRAWN	07/20/15	700 CU. IN. C BOX
QUALITY	07/20/15	239C6800VY 001

SCALE: 0.180 REF. NO: 239C6800AH SHEET 1 OF 1



Marks:

Connection Diagram
GEM2034E-FIG7



End shield Assembly		
Part Description	DE Side Part#	ODE Side Part#
End Shield	115E4355AA1	115E4355LM1
Bearing	235A2614AA01	235A2614AA01
Slinger/Inproseal	235A4575HD4	235A4575GS5

Fan & Fan Cover Assembly	
Part Description	Part#
Fan	159C7100AA2
Fan Cover	128D6841AA1

Conduit & Accessories Box Assembly	
Part Description	Part#
Conduit Box	118D4408AD2

Mechanical Accessories	
Part Description	Part#
Brake	
Tachometer	

