



GE INDUSTRIAL MOTORS
a **WOLONG** company

Product Technical Information

January 29, 2021

Data shown is for the current revision model #. Ensure your nameplate model # matches.

Model Number:	5KS326SAA308D11
Catalog Number:	M9122
Instruction Manual:	GEI-56128
Connection Diagram:	GEM2034E-FIG7
Outline Drawing:	239C6000BC

Accessory Connection Diagrams

Bearing Thermocouple:	None	Heater:	None
RTD:	None	Thermistor:	None
Thermostat:	None	Winding Thermocouple:	None
Bearing RTD:	None		

Table of Contents

Specification	01
Performance Characteristics	02
Outline Drawing	03
Connection Drawing(s)	04
Spare parts	05

Marks:

MODEL NUMBER:	5KS326SAA308D11	Estimated Weight:	670 Lbs
Outline Drawing:	239C6000BC	Time Rating:	CONT
Connection Diagram:	GEM2034E-FIG7	Enclosure:	TEFC
Instruction Book:	GEI-56128	Encl Construction:	841
Design Code:	32BD3101A	Ambient Max(°C):	40
Type:	KS	Alt Ambient Max(°C):	--
Frame:	326T	Insulation Class:	H
Phases:	3	NEMA Design:	B
Poles:	6	Nominal Efficiency:	93.0 %
Output Power:	30HP 22.2KW	Guaranteed Efficiency:	92.4 %
RPM:	1180	3/4 Load Efficiency:	--
Voltage:	460	KVA Code:	G
Hertz:	60	Max KVAR:	11.8
Amps - FL:	38.0	Power Factor:	79.5
Service Factor:	1.15	Bearing - DE:	6312ZC3
Alt Service Factor:	--	Bearing - ODE:	6312ZC3

Enclosure is Totally Enclosed Fan-Cooled

Stamped Nameplate Notes:

IEEE-STD-841-2009

DE BRG 60BC03JP30, ODE BRG 60BC03JP30

STAMP NP249A5564P051 AS BELOW:

MODEL:5KS326SAA308D11 S/N: XXX

CSA CERTIFIED CSA09.2216219 FOR EX NA IIC 200 C GC

CL 1 ZONE2 AEX NA IIC 200C;CL 1 DIV2 GRP ABCD 200C

IN -40C <= AMB <= 40C, 1.0 SF ON SINE-WAVE PWR

SURF TEMP 200C AT 1.15SF ON SINE-WAVE PWR

OR 200C VT OR 230C CT OR 200C CHP PWM CONTROL

ALTERNATE RATING FOR PWM CONTROL 1.0SF 40C AMB

VT 0 - 60 HZ, CT 4-60 HZ, CHP 60-90 HZ.



Additional Information:

6P - T EXTN
PAINTED FRAME ID & SHAFT,
FAN COVER INSIDE & ODE E/S OUTSIDE
C/BOX 346 CU IN - 3.00" NPT
OIL RESISTANT SLEEVING ON LEADS
.0015" TIR SHAFT RUNOUT
ROUTINE TEST REPORT AND 5 POINT VIBRATION TEST
REPORT INCLUDED IN C/B
GROUND PAD
F1 MOUNTING



Performance Characteristics

1st Winding 1st Connection

Design: 32BD3101A

Marks:

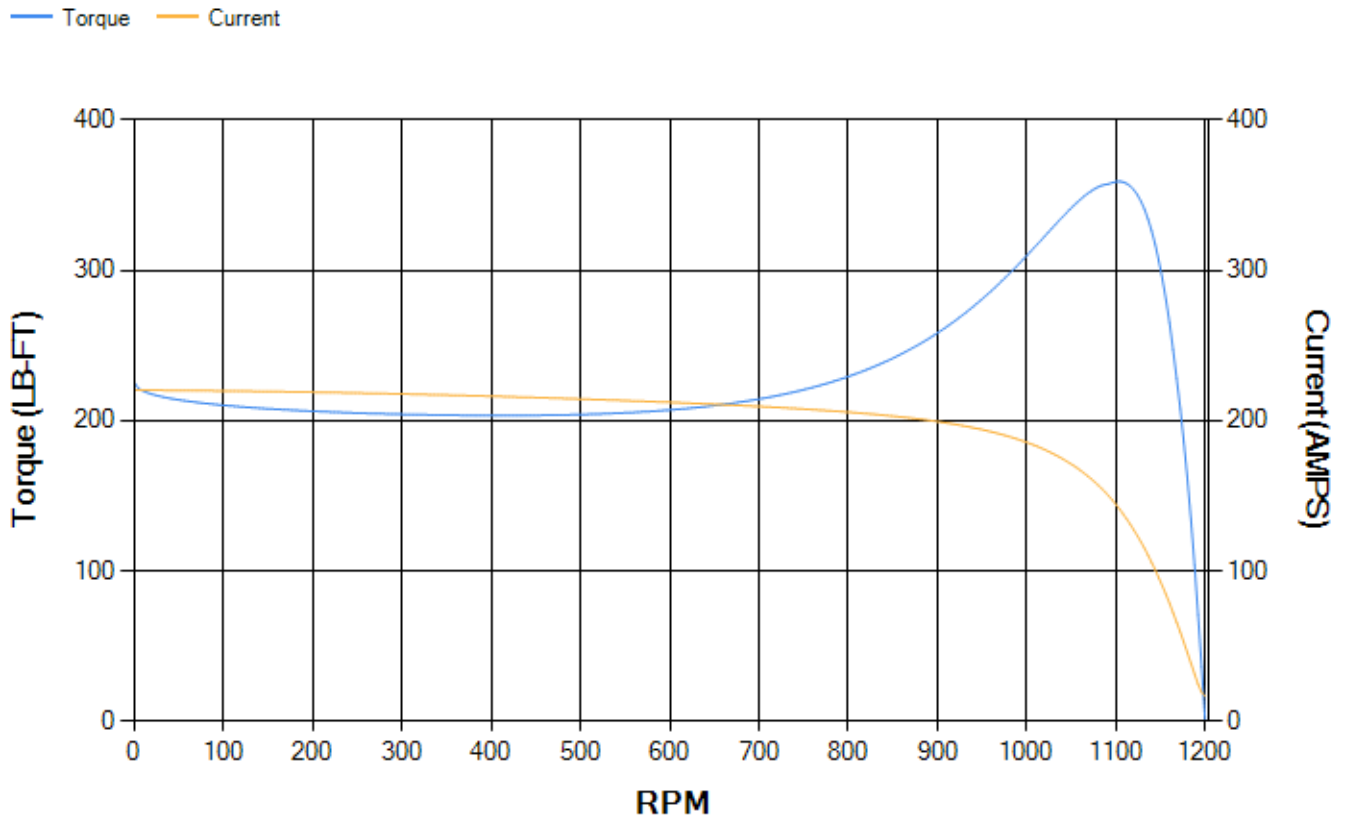
LOAD %	125.0	115.0	100.0	75.0	50.0	25.0	0.0
% EFF	91.92	92.34	93.07	93.39	93.11	90.08	0.00
% PF	81.4	80.8	79.28	74.23	63.47	41.41	3.84
AMPS	46.91	43.28	38.03	30.38	23.76	18.82	16.52

TORQ(FL)#FT	133.7	TORQ(LR)%FL	168.41	TORQ(BD)%FL	266.34
AMPS(LR)	220.35	PF AT START	0.34		

This motor is capable of two cold or one hot start with a maximum connected load inertia of 2199 Lb-Ft Sq (92.58 Kg-meter Sq)at 100% voltage, where the load torque varies with the square of the speed. Acceleration time with maximum inertia and the above load type is 45 seconds. Safe stall time at 100% voltage is 94 seconds cold, 54 seconds hot. Rotor inertia is 9.29 Lb-Ft Sq (0.39 Kg-meter Sq).

Open Circuit A-C:	0.317	Short Circuit D-C:	0.017
Short Circuit A-C:	0.019	X/R Ratio:	6.337
Stator Slots:	54	Rotor Slots:	40

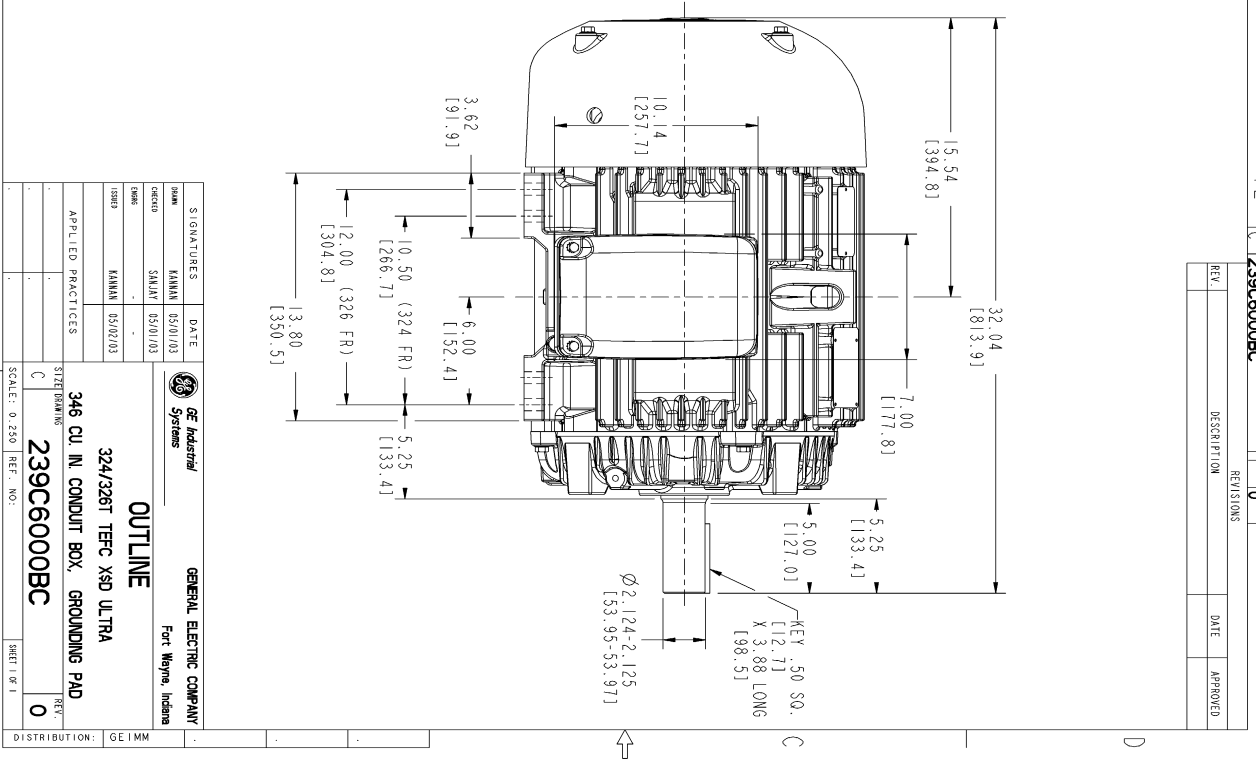
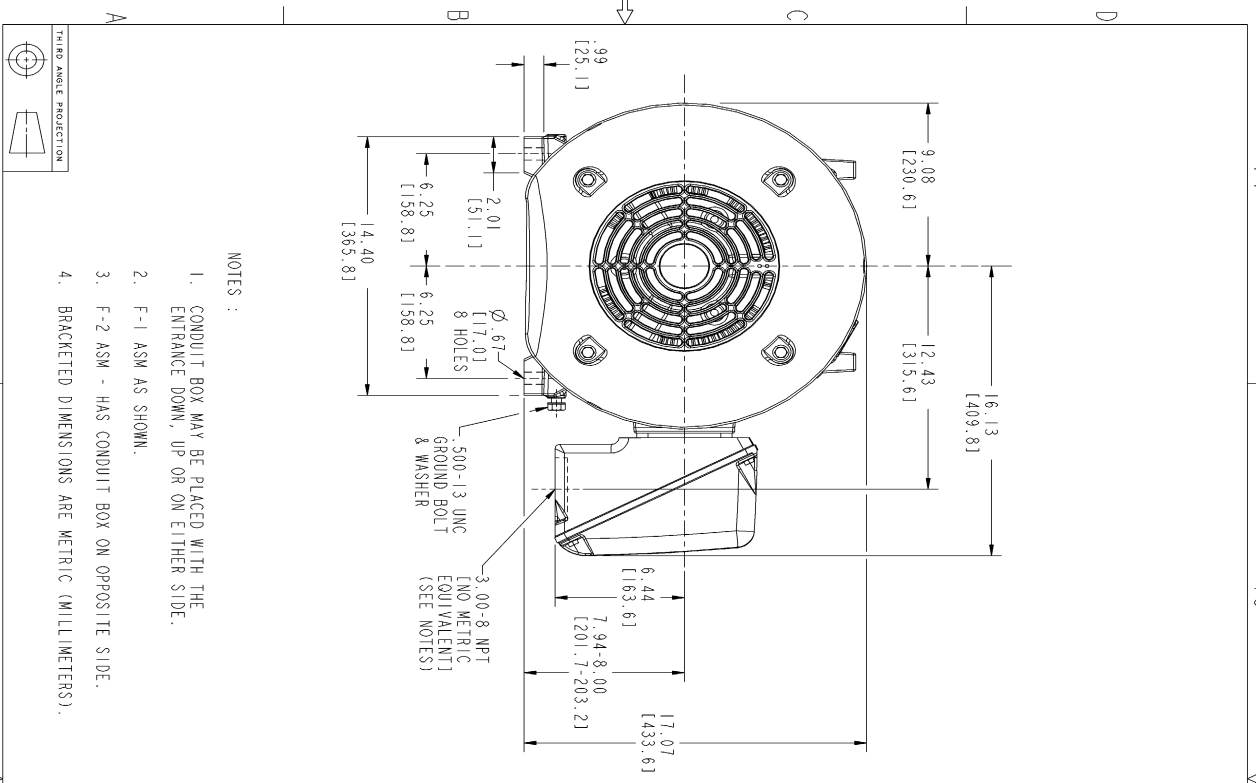
Speed Torque Current Curve (First Connection, First Speed)



NAME: 103013435 OBJECT: 239C6000BC DATE: 02-May-03 16:11:49

239C6000BC
ASSEM

Marks:



- NOTES :
1. CONDUIT BOX MAY BE PLACED WITH THE ENTRANCE DOWN, UP OR ON EITHER SIDE.
 2. F-1 ASM AS SHOWN.
 3. F-2 ASM - HAS CONDUIT BOX ON OPPOSITE SIDE.
 4. BRACKETED DIMENSIONS ARE METRIC (MILLIMETERS).

REV	DESCRIPTION	DATE	APPROVED

DATE	DATE	DATE	DATE
05/01/03	05/01/03	05/01/03	05/01/03
SKALNY	SKALNY	SKALNY	SKALNY

APPLIED PRACTICES	STRENGTH

SCALE: 0.250	REF. NO.:

346 CU IN CONDUIT BOX, GROUNDING PAD
239C6000BC
0

4

3

2

DISTRIBUTION: GE IMM

Marks:

Connection Diagram
GEM2034E-FIG7



End shield Assembly		
Part Description	DE Side Part#	ODE Side Part#
End Shield	115E4200AA1	115E4200LA1
Bearing	235A2509AS01	235A2509AS01
Slinger/Inproseal	149C4399G04	149C4399G04

Fan & Fan Cover Assembly	
Part Description	Part#
Fan	159C7000G01
Fan Cover	128D6800AA1

Conduit & Accessories Box Assembly	
Part Description	Part#
Conduit Box	149C4429AA2

Mechanical Accessories	
Part Description	Part#
Brake	
Tachometer	

