



GE INDUSTRIAL MOTORS
a **WOLONG** company

Product Technical Information

February 12, 2021

Data shown is for the current revision model #. Ensure your nameplate model # matches.

Model Number:	5KS447SAA308D6
Catalog Number:	M9137
Instruction Manual:	GEI-56128
Connection Diagram:	GEM2034E-FIG7
Outline Drawing:	239C6800ARA

Accessory Connection Diagrams

Bearing Thermocouple:	None	Heater:	None
RTD:	None	Thermistor:	None
Thermostat:	None	Winding Thermocouple:	None
Bearing RTD:	None		

Table of Contents

Specification	01
Performance Characteristics	02
Outline Drawing	03
Connection Drawing(s)	04
Spare parts	05

Marks:

MODEL NUMBER: 5KS447SAA308D6
Outline Drawing: 239C6800ARA
Connection Diagram: GEM2034E-FIG7
Instruction Book: GEI-56128
Design Code: 49BD3014A
Type: KS
Frame: 447T
Phases: 3
Poles: 6
Output Power: 150HP 111KW
RPM: 1190
Voltage: 460
Hertz: 60
Amps - FL: 170.0
Service Factor: 1.15
Alt Service Factor: --

Estimated Weight: 2940 Lbs
Time Rating: CONT
Enclosure: TEFC
Encl Construction: 841
Ambient Max(°C): 40
Alt Ambient Max(°C): --
Insulation Class: H
NEMA Design: B
Nominal Efficiency: 95.8 %
Guaranteed Efficiency: 95.4 %
3/4 Load Efficiency: --
KVA Code: G
Max KVAR: 38.7
Power Factor: 86.0
Bearing - DE: 6318ZC3
Bearing - ODE: 6318ZC3

Enclosure is Totally Enclosed Fan-Cooled

Stamped Nameplate Notes:

IEEE-STD-841-2009
 DE BRG 90BC03JP3, ODE BRG 90BC03JP3
 STAMP NP249A5564P051 AS BELOW:
 MODEL:5KS447SAA308D6 S/N: XXX
 CSA CERTIFIED CSA09.2216219 FOR EX NA IIC 200 C GC
 CL 1 ZONE2 AEX NA IIC 200C;CL 1 DIV2 GRP ABCD 200C
 IN -40C <= AMB <= 40C, 1.0 SF ON SINE-WAVE PWR
 SURF TEMP 200C AT 1.15SF ON SINE-WAVE PWR
 OR 200C VT OR 215C CT OR 200C CHP PWM CONTROL
 ALTERNATE RATING FOR PWM CONTROL 1.0SF 40C AMB
 VT 0-60 HZ, CT 3-60 HZ, CHP 60-90 HZ.



Additional Information:

6P - T EXTN
PAINTED FRAME ID & SHAFT,
FAN COVER INSIDE & ODE E/S OUTSIDE
C/BOX 700 CU IN - 3.00" NPT
OIL RESISTANT SLEEVING ON LEADS
.0015" TIR SHAFT RUNOUT
ROUTINE TEST REPORT AND 5 POINT VIBRATION TEST
REPORT INCLUDED IN C/B
GROUND PAD
F1 MOUNTING



Performance Characteristics

1st Winding 1st Connection

Design: 49BD3014A

Marks:

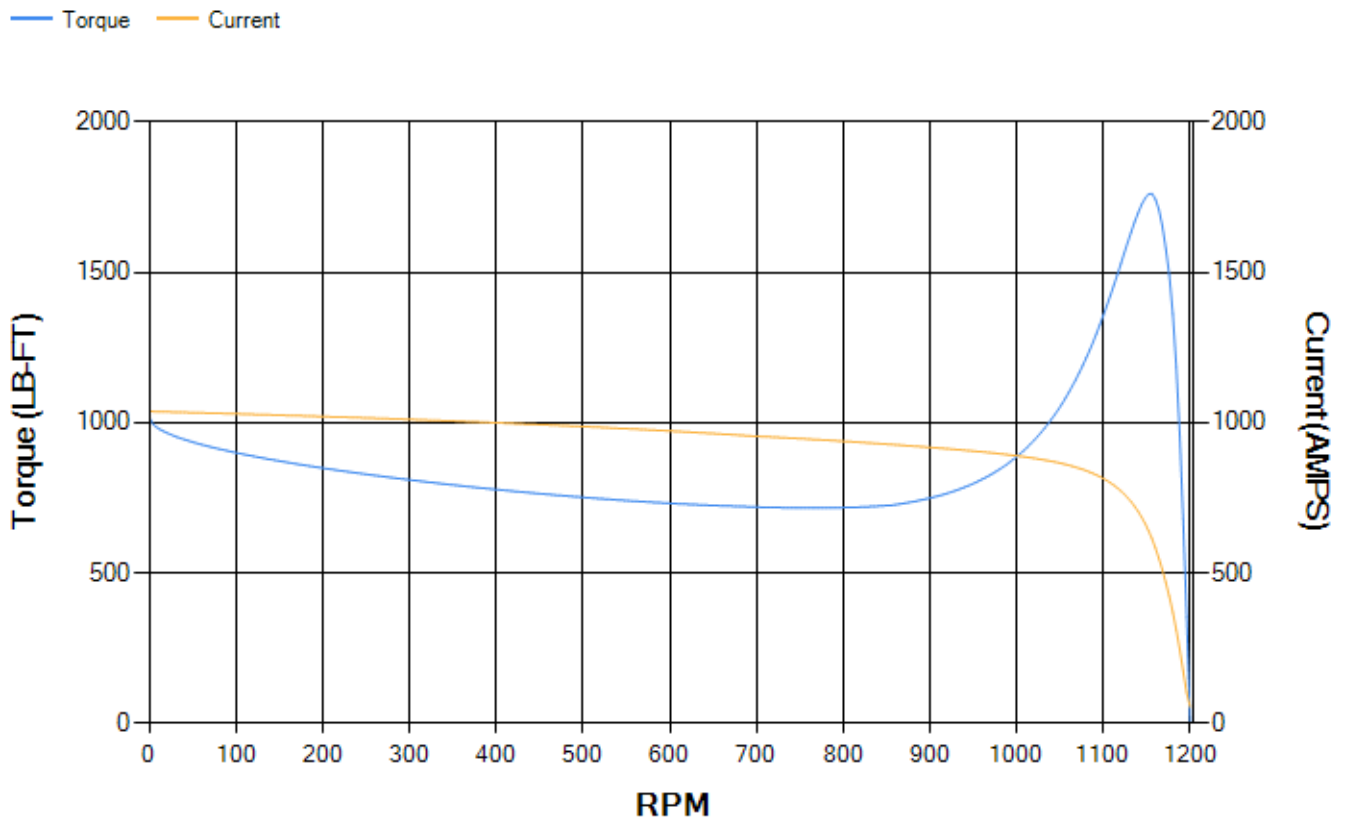
LOAD %	125.0	115.0	100.0	75.0	50.0	25.0	0.0
% EFF	95.17	95.39	95.87	95.92	95.67	93.62	0.00
% PF	86.55	86.43	85.82	83.04	75.55	54.81	3.79
AMPS	213.06	195.82	170.63	132.19	97.12	68.4	53.96

TORQ(FL)#FT	660.68	TORQ(LR)%FL	153.82	TORQ(BD)%FL	266.53
AMPS(LR)	1037.48	PF AT START	0.27		

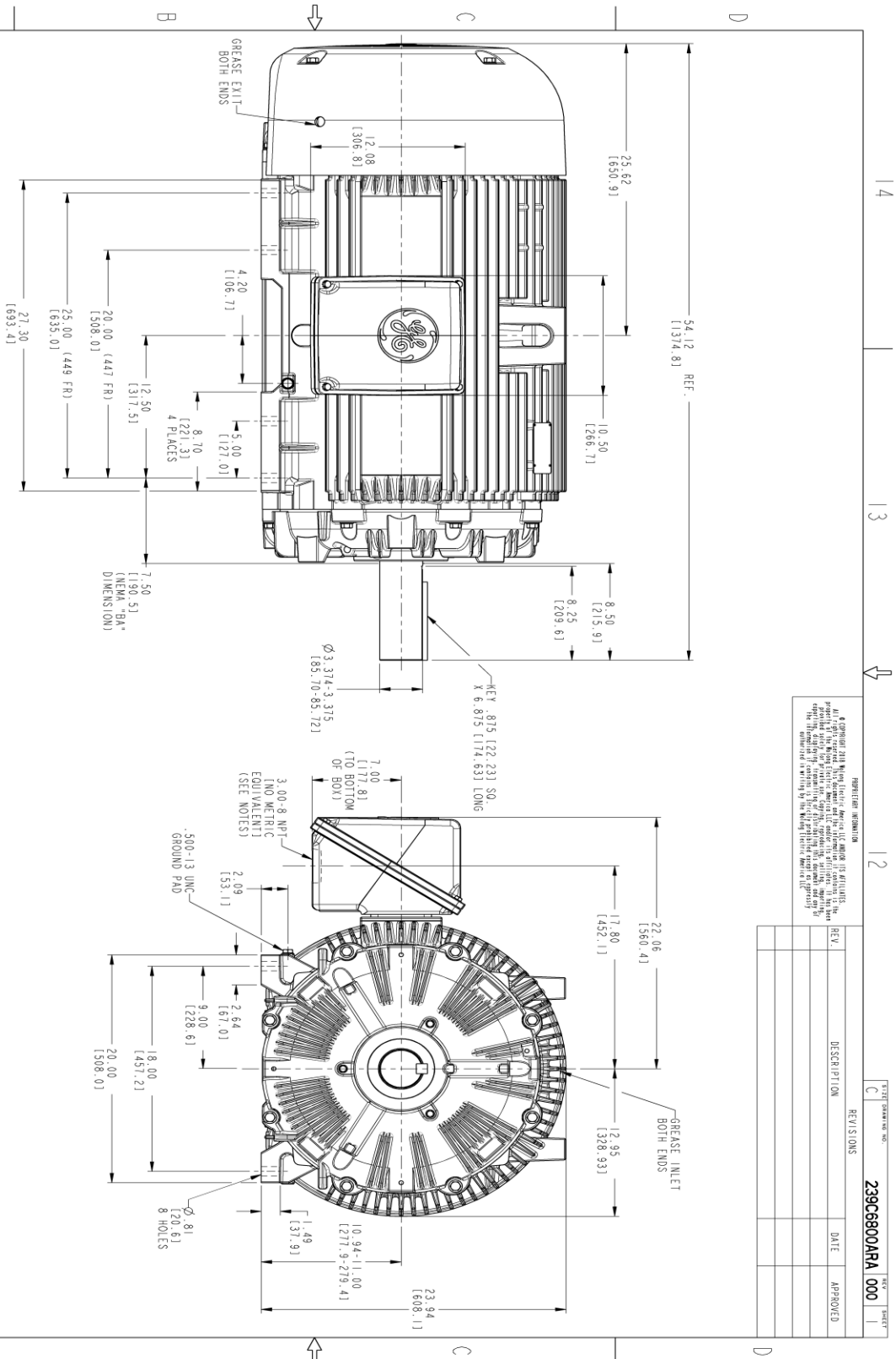
This motor is capable of two cold or one hot start with a maximum connected load inertia of 15474 Lb-Ft Sq (651.46 Kg-meter Sq)at 100% voltage, where the load torque varies with the square of the speed. Acceleration time with maximum inertia and the above load type is 94 seconds. Safe stall time at 100% voltage is 170 seconds cold, 113 seconds hot. Rotor inertia is 175.39 Lb-Ft Sq (7.38 Kg-meter Sq).

Open Circuit A-C:	1.242	Short Circuit D-C:	0.034
Short Circuit A-C:	0.059	X/R Ratio:	12.743
Stator Slots:	72	Rotor Slots:	58

Speed Torque Current Curve (First Connection, First Speed)



Marks:



- NOTES:
- CONDUIT BOX MAY BE PLACED WITH THE ENTRANCE DOWN, UP OR ON EITHER SIDE.
 - F-I ASSEMBLY AS SHOWN.
 - ALL DIMENSIONS ARE IN INCHES. BRACKETED DIMENSIONS ARE METRIC (MILLIMETERS).

PROTECTION INFORMATION
 GE reserves the right to make changes in design or specifications without notice. The user should refer to the latest issue of the GE specification for the most current information. The user should refer to the GE specification for the most current information. The user should refer to the GE specification for the most current information.

REV.	DESCRIPTION	DATE	APPROVED

SHEET DRAWING NO. **239C6800ARA 000**
 REV. 1

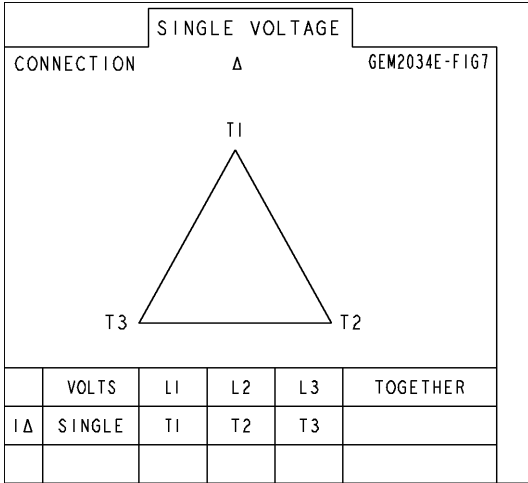


THIRD ANGLE PROJECTION

SIGNATURES	DATE	TITLE
DESIGNED BY: WMSI	11/11/20	GE INDUSTRIAL MOTORS a WOLONG company OUTLINE 447/449 T TEFC 700 CU IN. C BOX, GROUND PAD
CHECKED BY: WMSI	11/11/20	
DRAWN BY: SWM/WH	11/11/20	
DATE: 11/11/20		
ISSUED BY: WMSI		
SCALE: 0.180		
REF. NO.: 239C6800B		
SHEET 1 OF 1		

Marks:

Connection Diagram
GEM2034E-FIG7



End shield Assembly		
Part Description	DE Side Part#	ODE Side Part#
End Shield	115E4355AA1	115E4355LM1
Bearing	235A2514AG01	235A2514AG01
Slinger/Inproseal	149C4399G07	149C4399G07

Fan & Fan Cover Assembly	
Part Description	Part#
Fan	159C7100G03
Fan Cover	128D6841AA1

Conduit & Accessories Box Assembly	
Part Description	Part#
Conduit Box	118D4408AD2

Mechanical Accessories	
Part Description	Part#
Brake	
Tachometer	

