



**GE INDUSTRIAL MOTORS**  
a **WOLONG** company

# Product Technical Information

September 12, 2020

Data shown is for the current revision model #. Ensure your nameplate model # matches.

<b>Model Number:</b>	<b>5KS324SAA205D10</b>
<b>Catalog Number:</b>	<b>M9163</b>
<b>Instruction Manual:</b>	GEI-56128
<b>Connection Diagram:</b>	GEM2034E-FIG9
<b>Outline Drawing:</b>	239C6000AE

## Accessory Connection Diagrams

<b>Bearing Thermocouple:</b>	None	<b>Heater:</b>	None
<b>RTD:</b>	None	<b>Thermistor:</b>	None
<b>Thermostat:</b>	None	<b>Winding Thermocouple:</b>	None
<b>Bearing RTD:</b>	None		

## Table of Contents

Specification	01
Performance Characteristics	02
Outline Drawing	03
Connection Drawing(s)	04
Spare parts	05

Marks:

**MODEL NUMBER:** 5KS324SAA205D10  
**Outline Drawing:** 239C6000AE  
**Connection Diagram:** GEM2034E-FIG9  
**Instruction Book:** GEI-56128  
**Design Code:** 32BD1182A  
**Type:** KS  
**Frame:** 324T  
**Phases:** 3  
**Poles:** 4  
**Output Power:** 40HP 29.6KW  
**RPM:** 1780  
**Voltage:** 230/460  
**Hertz:** 60  
**Amps - FL:** 99.4/49.7  
**Service Factor:** 1.15  
**Alt Service Factor:** 1.00

**Estimated Weight:** 670 Lbs  
**Time Rating:** CONT  
**Enclosure:** TEFC  
**Encl Construction:** X\$D  
**Ambient Max(°C):** 40  
**Alt Ambient Max(°C):** 65  
**Insulation Class:** H  
**NEMA Design:** B  
**Nominal Efficiency:** 94.1 %  
**Guaranteed Efficiency:** 93.6 %  
**3/4 Load Efficiency:** 94.4 %  
**KVA Code:** G  
**Max KVAR:** 15.2  
**Power Factor:** 80.0  
**Bearing - DE:** 6312ZC3  
**Bearing - ODE:** 6312ZC3

**Enclosure is Totally Enclosed Fan-Cooled**

---

Stamped Nameplate Notes:

STAMP NP249A5564P051 AS BELOW:  
 MODEL:5KS324SAA205D10 S/N: XXX  
 CSA CERTIFIED CSA09.2216219 FOR EX NA IIC 200 C GC  
 CL 1 ZONE2 AEX NA IIC 200C;CL 1 DIV2 GRP ABCD 200C  
 IN -40C <= AMB <= 40C, 1.0 SF ON SINE-WAVE PWR  
 SURF TEMP 230C AT 1.15SF ON SINE-WAVE PWR  
 OR 200C VT OR 230C CT OR 200C CHP PWM CONTROL  
 ALTERNATE RATING FOR PWM CONTROL 1.0SF 40C AMB  
 VT 0 - 60 HZ, CT 3-60 HZ, CHP 60-90 HZ.



**Additional Information:**

4P - T EXTN  
346 CU IN - 3.00" NPT  
OIL RESISTANT SLEEVING ON LEADS  
F1 MOUNTING



**Performance Characteristics**

1st Winding 1st Connection

**Design: 32BD1182A**

**Marks:**

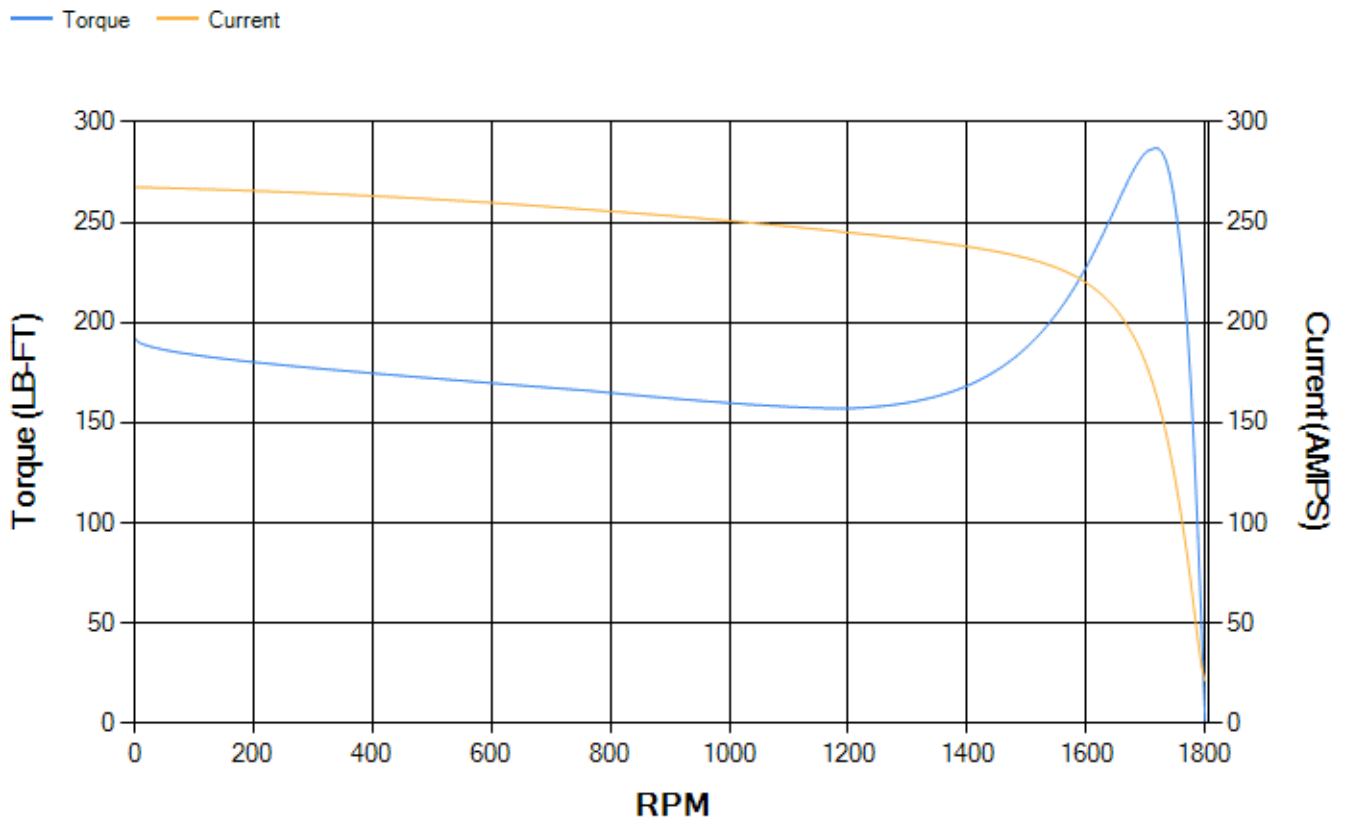
LOAD %	125.0	115.0	100.0	75.0	50.0	25.0	0.0
% EFF	93.44	93.73	94.29	94.38	93.95	91	0.00
% PF	82.18	81.61	80.15	75.28	64.7	42.44	3.55
AMPS	60.94	56.28	49.43	39.52	30.79	24.24	21.17

<b>TORQ(FL)#FT</b>	118.11	<b>TORQ(LR)%FL</b>	162.85	<b>TORQ(BD)%FL</b>	242.14
<b>AMPS(LR)</b>	267.59	<b>PF AT START</b>	0.33		

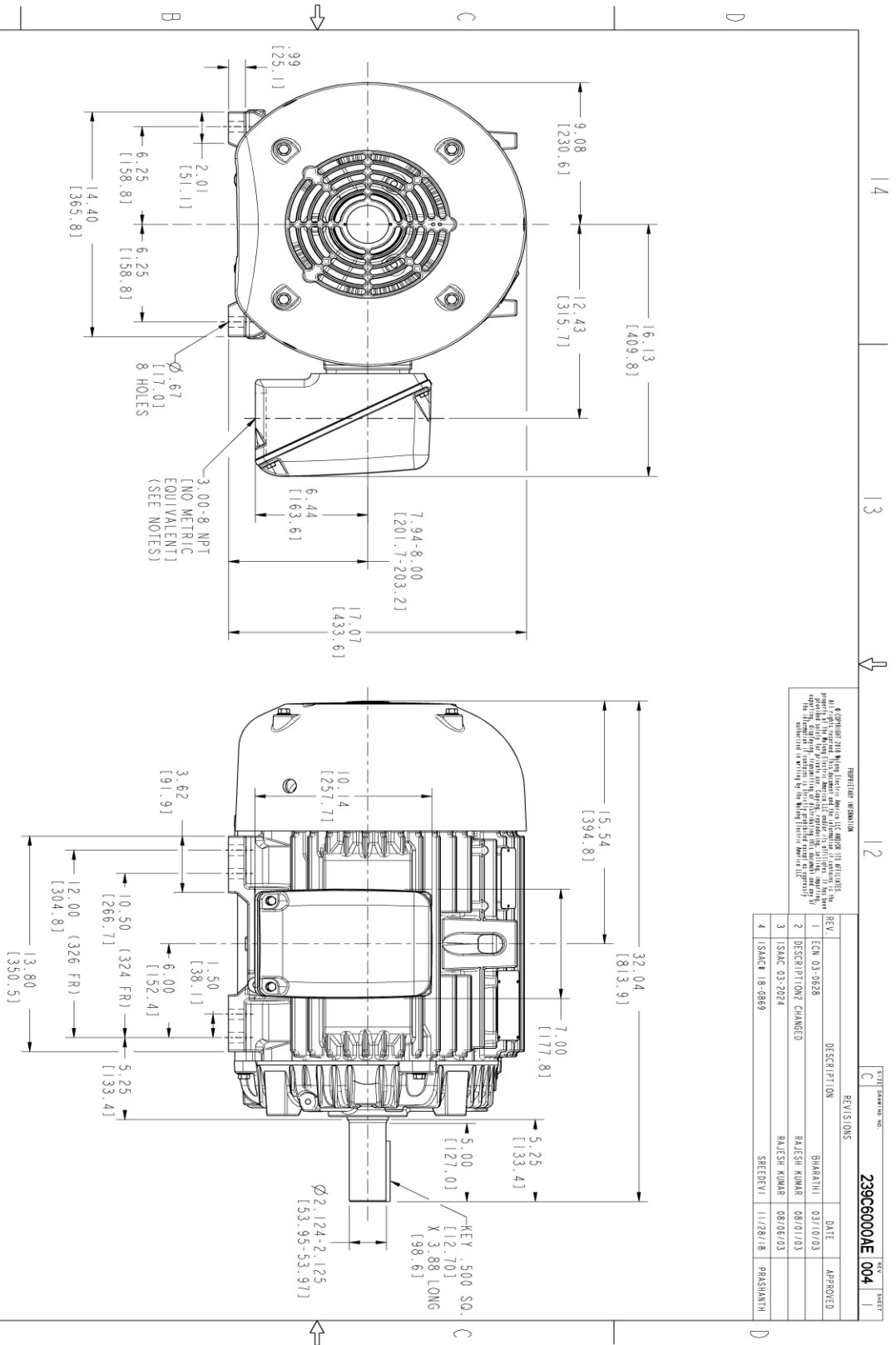
This motor is capable of two cold or one hot start with a maximum connected load inertia of 952 Lb-Ft Sq (40.08 Kg-meter Sq)at 100% voltage, where the load torque varies with the square of the speed. Acceleration time with maximum inertia and the above load type is 40 seconds. Safe stall time at 100% voltage is 88 seconds cold, 47 seconds hot. Rotor inertia is 6.94 Lb-Ft Sq (0.29 Kg-meter Sq).

<b>Open Circuit A-C:</b>	0.479	<b>Short Circuit D-C:</b>	0.022
<b>Short Circuit A-C:</b>	0.032	<b>X/R Ratio:</b>	8.428
<b>Stator Slots:</b>	48	<b>Rotor Slots:</b>	38

**Speed Torque Current Curve (First Connection, First Speed)**



Marks:



REGISTRATION INFORMATION  
 I am a registered Professional Engineer in the State of Florida, License No. 12414. I am a member of the Florida Board of Professional Engineers, License No. 12414. I am a member of the Florida Board of Professional Engineers, License No. 12414. I am a member of the Florida Board of Professional Engineers, License No. 12414.

REV.	DESCRIPTION	DATE	APPROVED
1	ECN 03-0628	03/10/03	BHARATHI
2	DESCRIPTION CHANGED	08/01/03	RAJESH KUMAR
3	ISAC 03-2024	08/08/03	RAJESH KUMAR
4	ISAC# 18-0869	11/28/18	PRAASHANTH

NOTES :

- CONDUIT BOX MAY BE PLACED WITH THE ENTRANCE DOWN, UP OR ON EITHER SIDE.
- F-1 ASM AS SHOWN.
- F-2 ASM HAS CONDUIT BOX ON OPPOSITE SIDE.
- BRACKETED DIMENSIONS ARE METRIC (MILLIMETERS).



THIRD ANGLE PROJECTION

SIGNATURES	DATE
MODEL: MGRANU	03/13/02
DESIGN: MANIVANNAN	03/13/02
ISSUED: MGRANU	03/13/02
SCALE: 0.250	REF. NO:

**GE INDUSTRIAL MOTORS**  
 a WOLONG company

**OUTLINE ASSEMBLY**  
 324/326T TEFC  
 346 CU. IN. CONDUIT BOX

**239C6000AE**

SCALE: 0.250 REF. NO: SHEET 1 OF 1

Marks:

**Connection Diagram**  
**GEM2034E-FIG9**



End shield Assembly		
Part Description	DE Side Part#	ODE Side Part#
End Shield	115E4200AA1	115E4200LA1
Bearing	235A2509AS01	235A2509AS01
Slinger/Inproseal	149C4399G04	149C4399G04

Fan & Fan Cover Assembly	
Part Description	Part#
Fan	159C6900G04
Fan Cover	128D6800AA1

Conduit & Accessories Box Assembly	
Part Description	Part#
Conduit Box	149C4429AA2

Mechanical Accessories	
Part Description	Part#
Brake	
Tachometer	

