



GE INDUSTRIAL MOTORS
a **WOLONG** company

Product Technical Information

January 31, 2021

Data shown is for the current revision model #. Ensure your nameplate model # matches.

Model Number:	5KS326SAA115D9
Catalog Number:	M9164
Instruction Manual:	GEI-56128
Connection Diagram:	GEM2034E-FIG9
Outline Drawing:	239C6000BD

Accessory Connection Diagrams

Bearing Thermocouple:	None	Heater:	None
RTD:	None	Thermistor:	None
Thermostat:	None	Winding Thermocouple:	None
Bearing RTD:	None		

Table of Contents

Specification	01
Performance Characteristics	02
Outline Drawing	03
Connection Drawing(s)	04
Spare parts	05

Marks:

MODEL NUMBER: 5KS326SAA115D9
Outline Drawing: 239C6000BD
Connection Diagram: GEM2034E-FIG9
Instruction Book: GEI-56128
Design Code: 32BD0112A
Type: KS
Frame: 326TS
Phases: 3
Poles: 2
Output Power: 50HP 37KW
RPM: 3565
Voltage: 230/460
Hertz: 60
Amps - FL: 117.0/58.5
Service Factor: 1.15
Alt Service Factor: --

Estimated Weight: 670 Lbs
Time Rating: CONT
Enclosure: TEFC
Encl Construction: 841
Ambient Max(°C): 40
Alt Ambient Max(°C): --
Insulation Class: H
NEMA Design: B
Nominal Efficiency: 93.0 %
Guaranteed Efficiency: 92.4 %
3/4 Load Efficiency: --
KVA Code: G
Max KVAR: 15.2
Power Factor: 86.0
Bearing - DE: 6312ZC3
Bearing - ODE: 6312ZC3

Enclosure is Totally Enclosed Fan-Cooled

Stamped Nameplate Notes:

DE BRG 60BC03JP30, ODE BRG 60BC03JP30
 EXCEPTION-IEEE-STD-841-2009:DUAL VOLTAGE 230/460
 STAMP NP249A5564P051 AS BELOW:
 MODEL:5KS326SAA115D9 S/N: XXX
 CSA CERTIFIED CSA09.2216219 FOR EX NA IIC 200 C GC
 CL 1 ZONE2 AEX NA IIC 200C;CL 1 DIV2 GRP ABCD 200C
 IN -40C <= AMB <= 40C, 1.0 SF ON SINE-WAVE PWR
 SURF TEMP 230C AT 1.15SF ON SINE-WAVE PWR
 OR 200C VT OR 230C CT OR 200C CHP PWM CONTROL
 ALTERNATE RATING FOR PWM CONTROL 1.0SF 40C AMB
 VT 0 - 60 HZ, CT 30-60 HZ, CHP 60-90 HZ.



Additional Information:

2P - TS EXTN
PAINTED FRAME ID & SHAFT,
FAN COVER INSIDE & ODE E/S OUTSIDE
C/BOX 346 CU IN - 3.00" NPT
OIL RESISTANT SLEEVING ON LEADS
.0015" TIR SHAFT RUNOUT
ROUTINE TEST REPORT AND 5 POINT VIBRATION TEST
REPORT INCLUDED IN C/B
GROUND PAD
F1 MOUNTING



Performance Characteristics

1st Winding 1st Connection

Design: 32BD0112A

Marks:

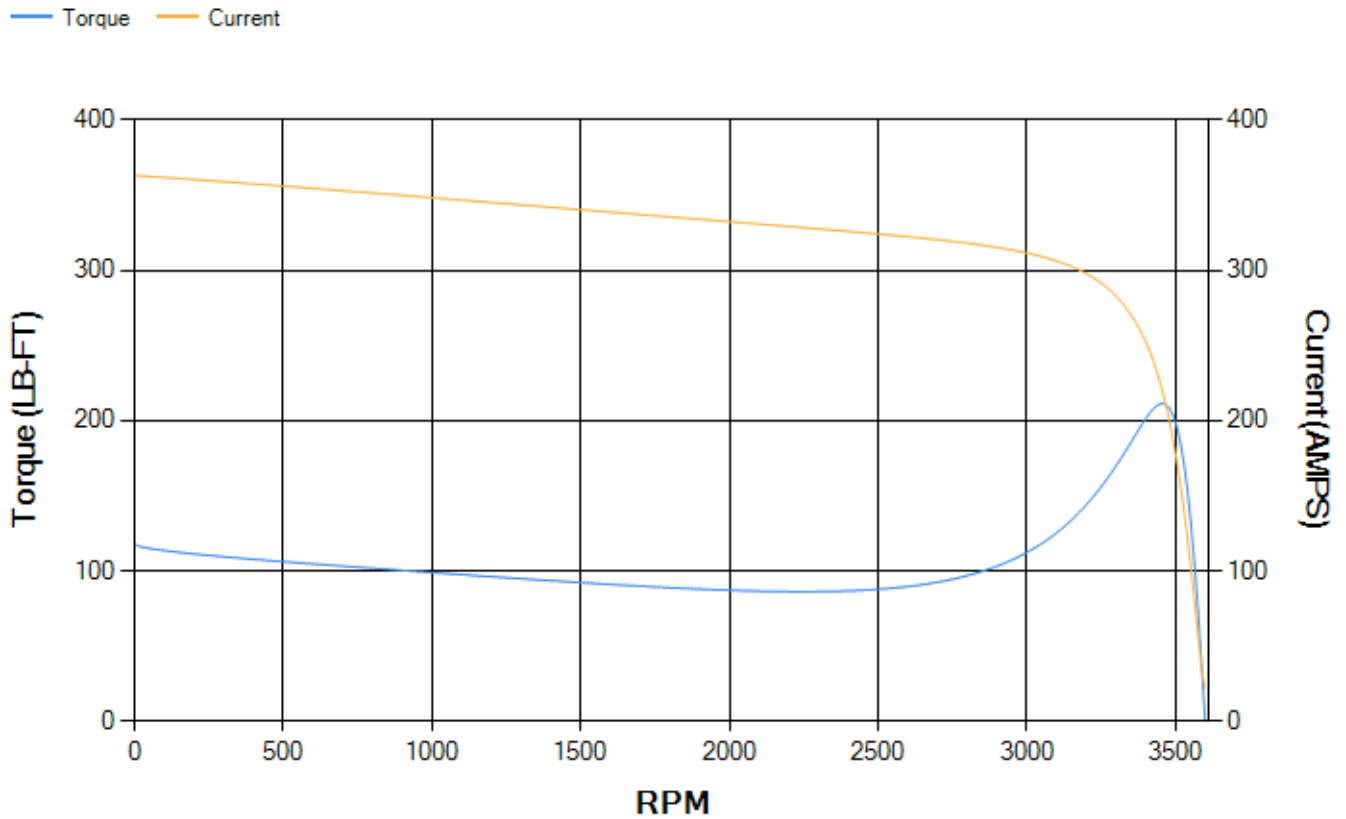
LOAD %	125.0	115.0	100.0	75.0	50.0	25.0	0.0
% EFF	93.06	93.31	93.8	93.75	93.07	89.44	0.00
% PF	87.6	87.16	86.04	82.19	73.18	51.26	5.52
AMPS	71.76	66.17	57.92	45.55	34.36	25.52	21.24

TORQ(FL)#FT	73.65	TORQ(LR)%FL	160.29	TORQ(BD)%FL	286.84
AMPS(LR)	363.26	PF AT START	0.31		

This motor is capable of two cold or one hot start with a maximum connected load inertia of 127 Lb-Ft Sq (5.35 Kg-meter Sq)at 100% voltage, where the load torque varies with the square of the speed. Acceleration time with maximum inertia and the above load type is 19 seconds. Safe stall time at 100% voltage is 45 seconds cold, 22 seconds hot. Rotor inertia is 4.02 Lb-Ft Sq (0.17 Kg-meter Sq).

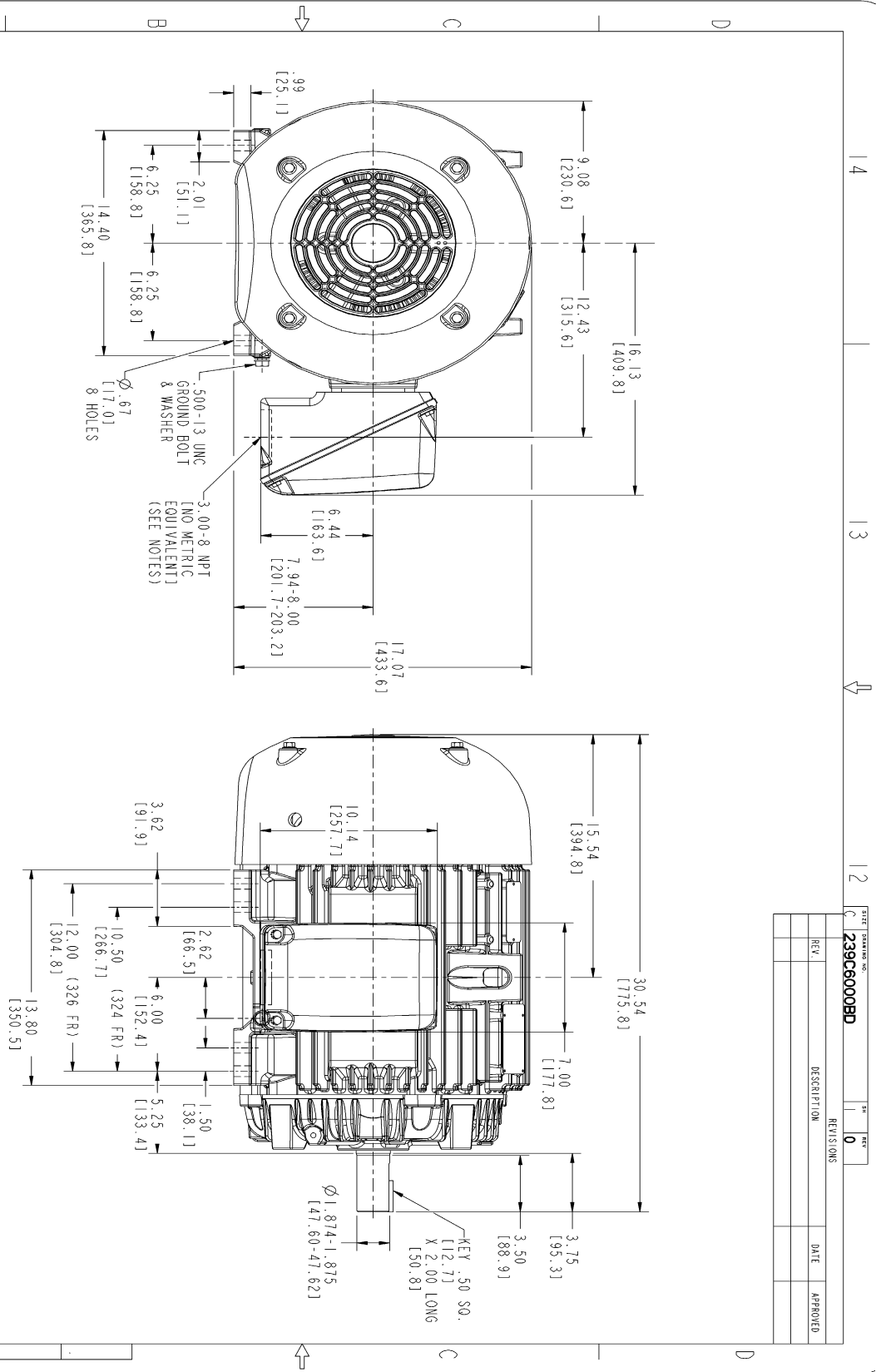
Open Circuit A-C:	0.702	Short Circuit D-C:	0.018
Short Circuit A-C:	0.039	X/R Ratio:	6.692
Stator Slots:	48	Rotor Slots:	38

Speed Torque Current Curve (First Connection, First Speed)

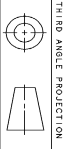


NAME: 103016807 OBJECT: 239C6000BD DATE: 08-May-03 13:06:37

Marks:



- NOTES:
- CONDUIT BOX MAY BE PLACED WITH THE ENTRANCE DOWN, UP OR ON EITHER SIDE.
 - F-1 ASM AS SHOWN.
 - F-2 ASM HAS CONDUIT BOX ON OPPOSITE SIDE.
 - BRACKETED DIMENSIONS ARE METRIC (MILLIMETERS).



DRAWING NO. 239C6000BD		REV. 0
REV.	DESCRIPTION	DATE

SIGNATURES	DATE	GENERAL ELECTRIC COMPANY Fort Wayne, Indiana
DRAWN P. RAJESH KUMAR CHECKED KANANI DESIGNED P. RAJESH KUMAR APPLIED PRACTICES	05/07/03 05/07/03 05/07/03	
SCALE: 0.250 REF. NO.:		324/326TS TERC XSD ULTRA 346 CU IN. CONDUIT BOX, GROUNDING PAD 239C6000BD
SHEET 0F 1		REV. 0

DISTRIBUTION: GE IMM

Marks:

Connection Diagram
GEM2034E-FIG9



End shield Assembly		
Part Description	DE Side Part#	ODE Side Part#
End Shield	115E4200AA1	115E4200LA1
Bearing	235A2509AS01	235A2509AS01
Slinger/Inproseal	149C4399G04	149C4399G04

Fan & Fan Cover Assembly	
Part Description	Part#
Fan	159C6700G02
Fan Cover	128D6800AA1

Conduit & Accessories Box Assembly	
Part Description	Part#
Conduit Box	149C4429AA2

Mechanical Accessories	
Part Description	Part#
Brake	
Tachometer	

