



GE INDUSTRIAL MOTORS
a **WOLONG** company

Product Technical Information

January 30, 2021

Data shown is for the current revision model #. Ensure your nameplate model # matches.

Model Number:	5KS365SAA205D3
Catalog Number:	M9195
Instruction Manual:	GEI-56128
Connection Diagram:	GEM2034E-FIG9
Outline Drawing:	239C6200WK

Accessory Connection Diagrams

Bearing Thermocouple:	None	Heater:	None
RTD:	None	Thermistor:	None
Thermostat:	None	Winding Thermocouple:	None
Bearing RTD:	None		

Table of Contents

Specification	01
Performance Characteristics	02
Outline Drawing	03
Connection Drawing(s)	04
Spare parts	05

Marks:

MODEL NUMBER: 5KS365SAA205D3
Outline Drawing: 239C6200WK
Connection Diagram: GEM2034E-FIG9
Instruction Book: GEI-56128
Design Code: 36BD1172A
Type: KS
Frame: 365T
Phases: 3
Poles: 4
Output Power: 75HP 55.5KW
RPM: 1780
Voltage: 230/460
Hertz: 60
Amps - FL: 174.2/87.1
Service Factor: 1.15
Alt Service Factor: --

Estimated Weight: 1040 Lbs
Time Rating: CONT
Enclosure: TEFC
Encl Construction: 841
Ambient Max(°C): 40
Alt Ambient Max(°C): --
Insulation Class: H
NEMA Design: B
Nominal Efficiency: 95.4 %
Guaranteed Efficiency: 95.0 %
3/4 Load Efficiency: --
KVA Code: G
Max KVAR: 22.3
Power Factor: 84.5
Bearing - DE: 6314ZC3
Bearing - ODE: 6314ZC3

Enclosure is Totally Enclosed Fan-Cooled

Stamped Nameplate Notes:

DE BRG 70BC03JP30, ODE BRG 70BC03JP30
 EXCEPTION-IEEE-STD-841-2009:DUAL VOLTAGE 230/460
 STAMP NP249A5564P051 AS BELOW:
 MODEL:5KS365SAA205D3 S/N: XXX
 CSA CERTIFIED CSA09.2216219 FOR EX NA IIC 200 C GC
 CL 1 ZONE2 AEX NA IIC 200C;CL 1 DIV2 GRP ABCD 200C
 IN -40C <= AMB <= 40C, 1.0 SF ON SINE-WAVE PWR
 SURF TEMP 260C AT 1.15SF ON SINE-WAVE PWR
 OR 200C VT OR 230C CT OR 200C CHP PWM CONTROL
 ALTERNATE RATING FOR PWM CONTROL 1.0SF 40C AMB
 VT 0 - 60 HZ, CT 10-60 HZ, CHP 60-90 HZ.



Additional Information:

4P - T EXTN
PAINTED FRAME ID & SHAFT,
FAN COVER INSIDE & ODE E/S OUTSIDE
C/BOX 700 CU IN - 3.00" NPT
OIL RESISTANT SLEEVING ON LEADS
.0015" TIR SHAFT RUNOUT
ROUTINE TEST REPORT AND 5 POINT VIBRATION TEST
REPORT INCLUDED IN C/B
GROUND PAD
F1 MOUNTING



Performance Characteristics

1st Winding 1st Connection

Design: 36BD1172A

Marks:

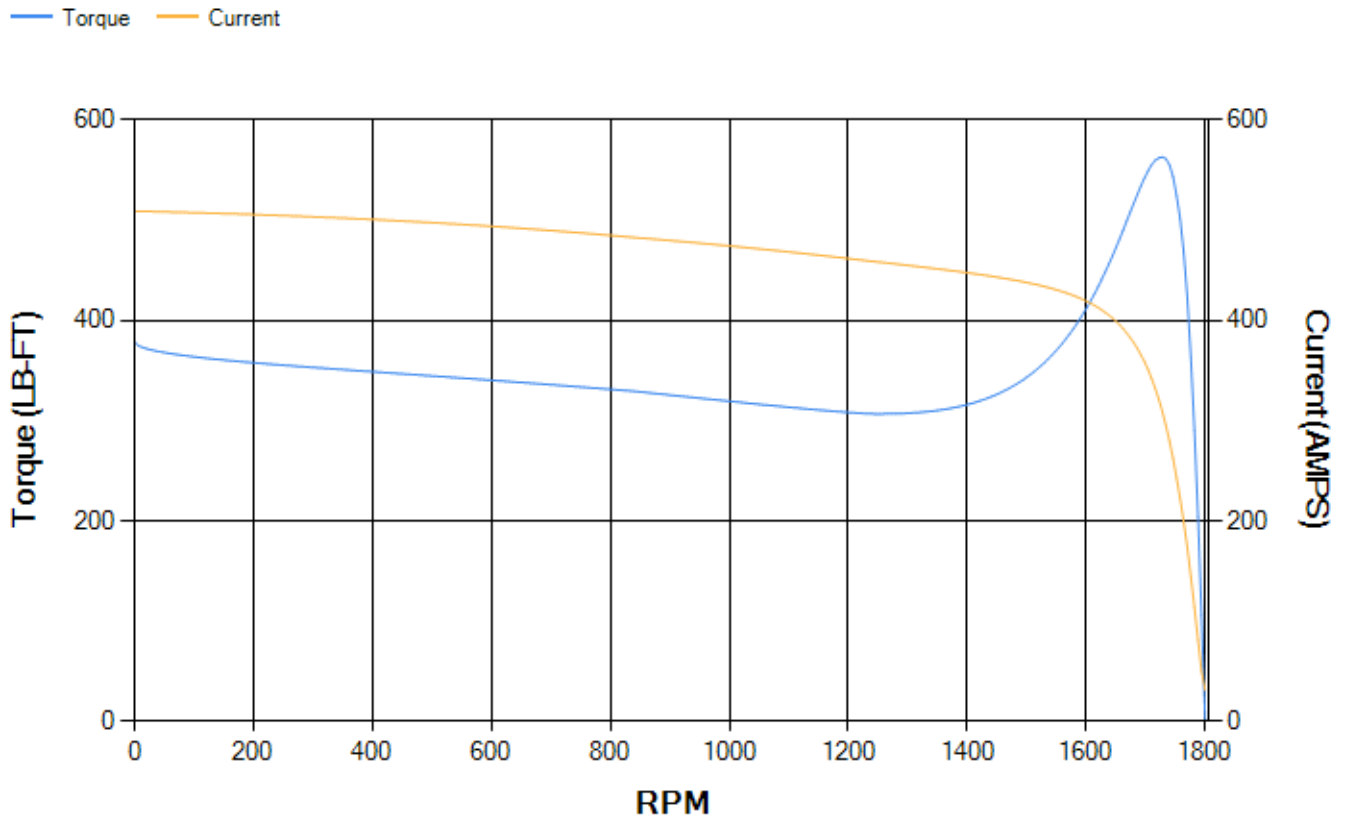
LOAD %	125.0	115.0	100.0	75.0	50.0	25.0	0.0
% EFF	94.7	94.96	95.49	95.62	95.45	93.46	0.00
% PF	86	85.66	84.68	81.02	72.12	49.98	3.11
AMPS	107.75	99.24	86.63	67.95	50.98	37.57	31.15

TORQ(FL)#FT	221.08	TORQ(LR)%FL	171.4	TORQ(BD)%FL	254.07
AMPS(LR)	509.22	PF AT START	0.32		

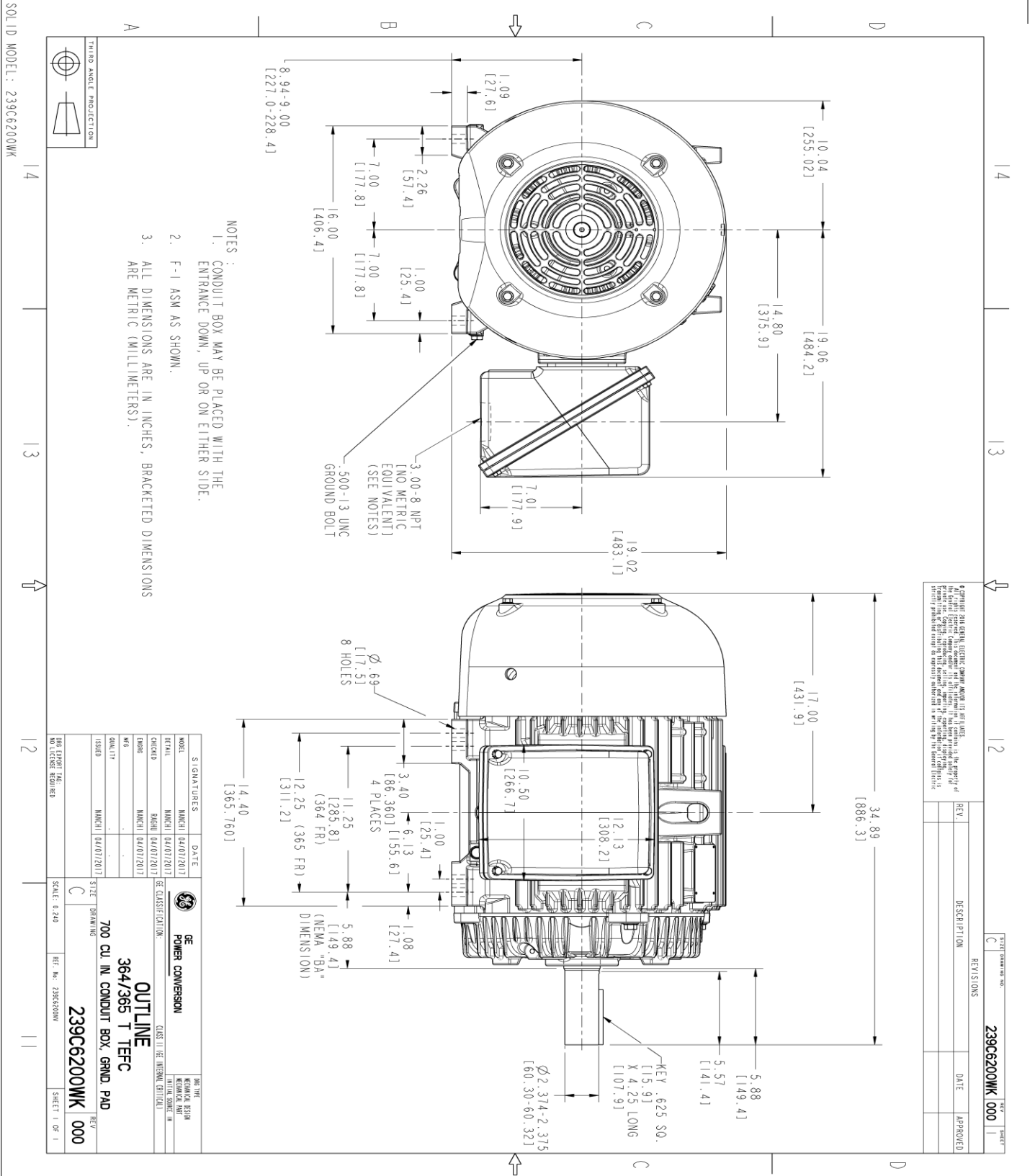
This motor is capable of two cold or one hot start with a maximum connected load inertia of 1419 Lb-Ft Sq (59.74 Kg-meter Sq)at 100% voltage, where the load torque varies with the square of the speed. Acceleration time with maximum inertia and the above load type is 30 seconds. Safe stall time at 100% voltage is 71 seconds cold, 36 seconds hot. Rotor inertia is 16.14 Lb-Ft Sq (0.68 Kg-meter Sq).

Open Circuit A-C:	0.68	Short Circuit D-C:	0.026
Short Circuit A-C:	0.034	X/R Ratio:	9.819
Stator Slots:	60	Rotor Slots:	50

Speed Torque Current Curve (First Connection, First Speed)



Marks:



© COPYRIGHT 2001 GEORGE EASTMAN ELECTRIC COMPANY. ALL RIGHTS RESERVED. ALL OTHER PATENTS, TRADEMARKS AND SERVICE MARKS ARE THE PROPERTY OF THEIR RESPECTIVE OWNERS. GEORGE EASTMAN ELECTRIC COMPANY IS NOT RESPONSIBLE FOR ANY DAMAGE TO PROPERTY OR PERSONS ARISING FROM THE USE OF THIS DRAWING. THE COMPANY MAKES NO WARRANTY OF ANY KIND, EXPRESS OR IMPLIED, INCLUDING BUT NOT LIMITED TO THE IMPLIED WARRANTIES OF MERCHANTABILITY AND FITNESS FOR A PARTICULAR PURPOSE.

REV.	DESCRIPTION	DATE	APPROVED

SIGNATURES	DATE	DESIGNATION
MACHIL (9/10/2017)		
MACHIL (9/10/2017)		
MACHIL (9/10/2017)		
MACHIL (9/10/2017)		
MACHIL (9/10/2017)		

GE POWER CONVERSION

OUTLINE

364/365 T TFC

700 CU IN CONDUIT BOX, GRND PAD

239C6200WK

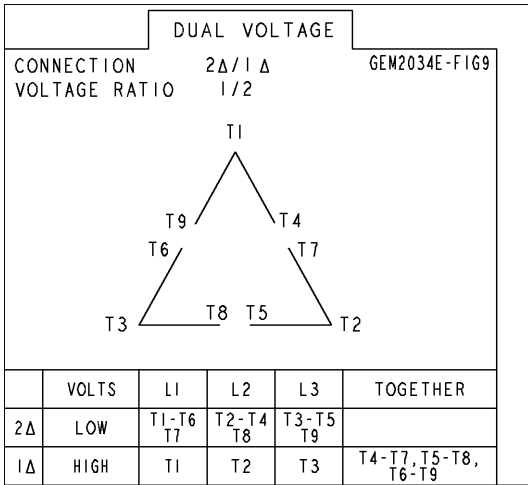
SCALE: 0.240

REF. No. 239C6200WK

SHEET 1 OF 1

Marks:

Connection Diagram
GEM2034E-FIG9



End shield Assembly		
Part Description	DE Side Part#	ODE Side Part#
End Shield	115E4250AA1	115E4250LK1
Bearing	235A2516AC01	235A2516AC01
Slinger/Inproseal	149C4399G05	149C4399G05

Fan & Fan Cover Assembly	
Part Description	Part#
Fan	159C7100AA1
Fan Cover	128D6810AA1

Conduit & Accessories Box Assembly	
Part Description	Part#
Conduit Box	118D4408AD2

Mechanical Accessories	
Part Description	Part#
Brake	
Tachometer	

