



GE INDUSTRIAL MOTORS
a **WOLONG** company

Product Technical Information

January 30, 2021

Data shown is for the current revision model #. Ensure your nameplate model # matches.

Model Number:	5KS405SAA305D3
Catalog Number:	M9196
Instruction Manual:	GEI-56128
Connection Diagram:	GEM2034E-FIG3
Outline Drawing:	239C6400ZJ

Accessory Connection Diagrams

Bearing Thermocouple:	None	Heater:	None
RTD:	None	Thermistor:	None
Thermostat:	None	Winding Thermocouple:	None
Bearing RTD:	None		

Table of Contents

Specification	01
Performance Characteristics	02
Outline Drawing	03
Connection Drawing(s)	04
Spare parts	05

Marks:

MODEL NUMBER:	5KS405SAA305D3	Estimated Weight:	1430 Lbs
Outline Drawing:	239C6400ZJ	Time Rating:	CONT
Connection Diagram:	GEM2034E-FIG3	Enclosure:	TEFC
Instruction Book:	GEI-56128	Encl Construction:	841
Design Code:	40BD3069A	Ambient Max(°C):	40
Type:	KS	Alt Ambient Max(°C):	--
Frame:	405T	Insulation Class:	H
Phases:	3	NEMA Design:	B
Poles:	6	Nominal Efficiency:	94.5 %
Output Power:	75HP 55.5KW	Guaranteed Efficiency:	94.1 %
RPM:	1190	3/4 Load Efficiency:	--
Voltage:	230/460	KVA Code:	G
Hertz:	60	Max KVAR:	29.6
Amps - FL:	185.8/92.9	Power Factor:	80.0
Service Factor:	1.15	Bearing - DE:	6316ZC3
Alt Service Factor:	--	Bearing - ODE:	6316ZC3

Enclosure is Totally Enclosed Fan-Cooled

Stamped Nameplate Notes:

DE BRG 80BC03JP3, ODE BRG 80BC03JP3
 EXCEPTION-IEEE-STD-841-2009:DUAL VOLTAGE 230/460
 STAMP NP249A5564P051 AS BELOW:
 MODEL:5KS405SAA305D3 S/N: XXX
 CSA CERTIFIED CSA09.2216219 FOR EX NA IIC 200 C GC
 CL 1 ZONE2 AEX NA IIC 200C;CL 1 DIV2 GRP ABCD 200C
 IN -40C <= AMB <= 40C, 1.0 SF ON SINE-WAVE PWR
 SURF TEMP 260C AT 1.15SF ON SINE-WAVE PWR
 OR 200C VT OR 230C CT OR 200C CHP PWM CONTROL
 ALTERNATE RATING FOR PWM CONTROL 1.0SF 40C AMB
 VT 0 - 60 HZ, CT 7.5-60 HZ, CHP 60-90 HZ.



Additional Information:

6P - T EXTN
PAINTED FRAME ID & SHAFT,
FAN COVER INSIDE & ODE E/S OUTSIDE
C/BOX 700 CU IN - 3.00" NPT
OIL RESISTANT SLEEVING ON LEADS
.0015" TIR SHAFT RUNOUT
ROUTINE TEST REPORT AND 5 POINT VIBRATION TEST
REPORT INCLUDED IN C/B
GROUND PAD
F1 MOUNTING



Performance Characteristics

1st Winding 1st Connection

Design: 40BD3069A

Marks:

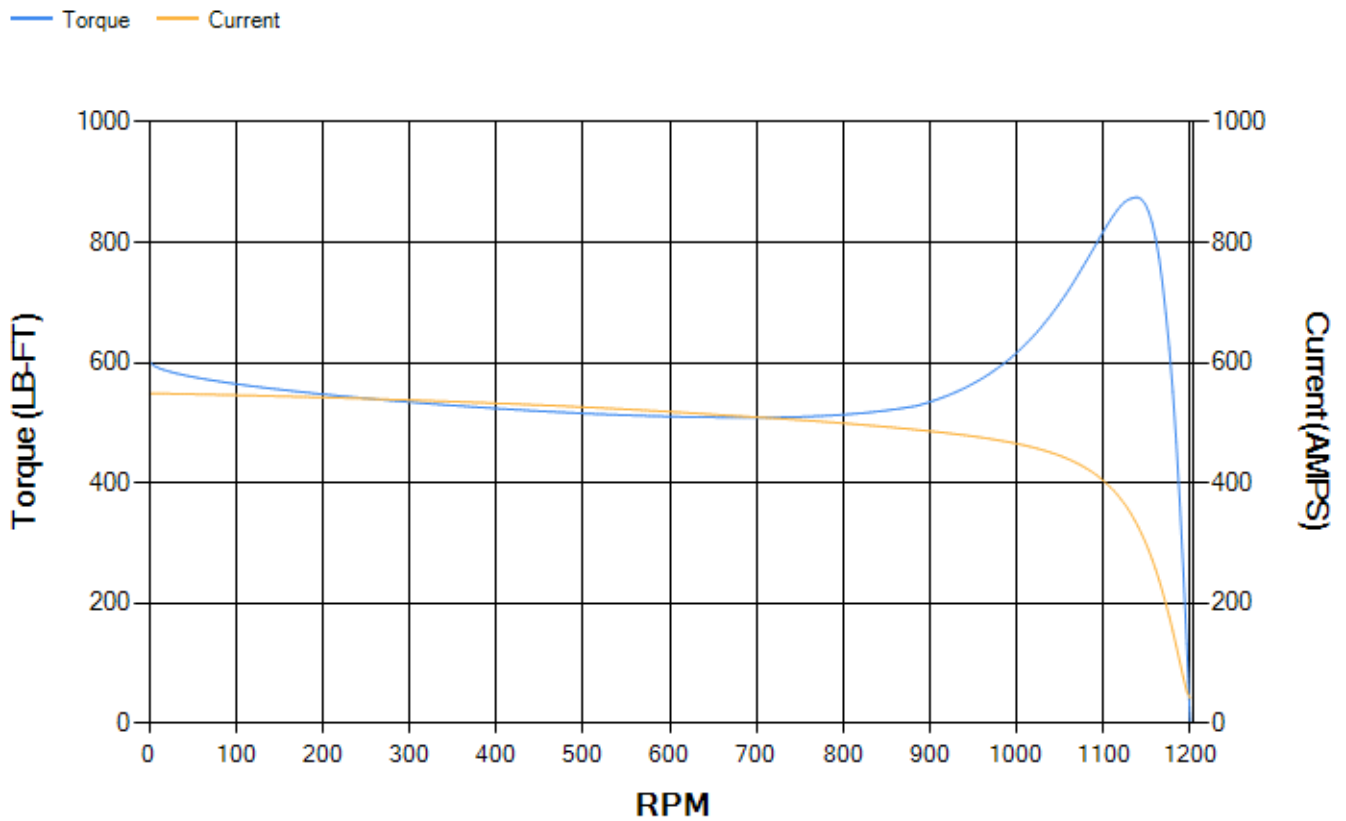
LOAD %	125.0	115.0	100.0	75.0	50.0	25.0	0.0
% EFF	93.82	94.08	94.59	94.62	94.17	91.27	0.00
% PF	82.48	81.75	80.04	74.72	63.65	41.17	3.29
AMPS	113.39	104.96	92.52	74.46	58.55	46.7	41.23

TORQ(FL)#FT	331.31	TORQ(LR)%FL	181.88	TORQ(BD)%FL	263.16
AMPS(LR)	548.95	PF AT START	0.35		

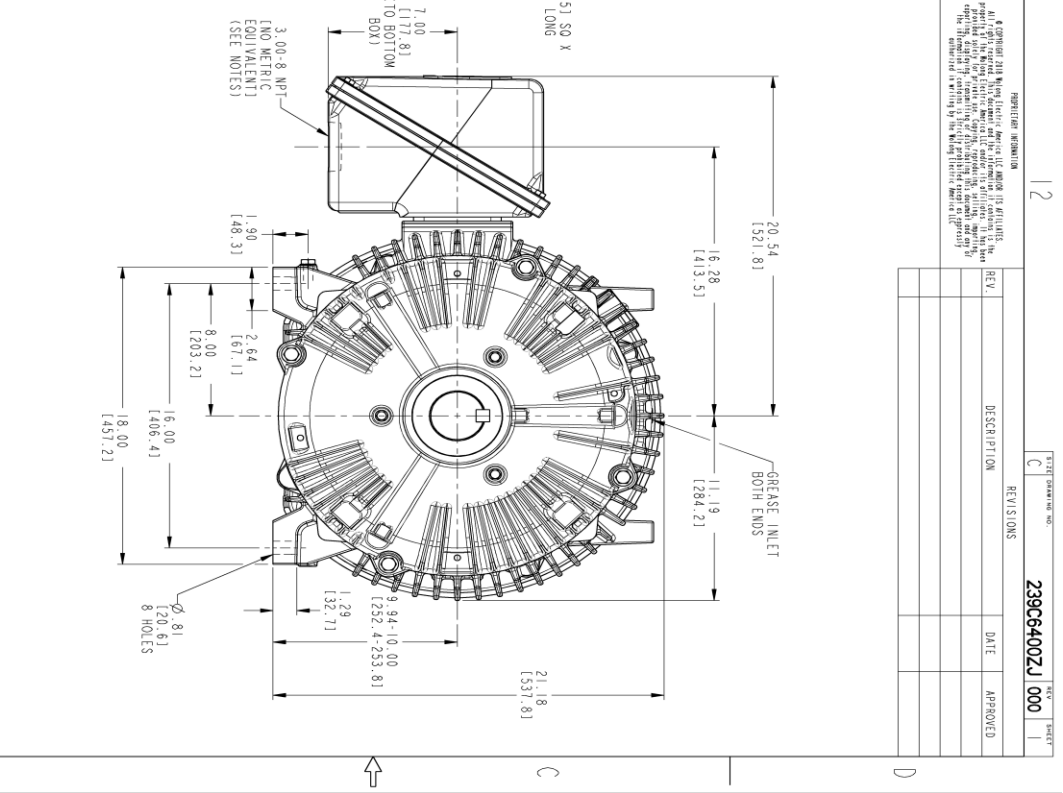
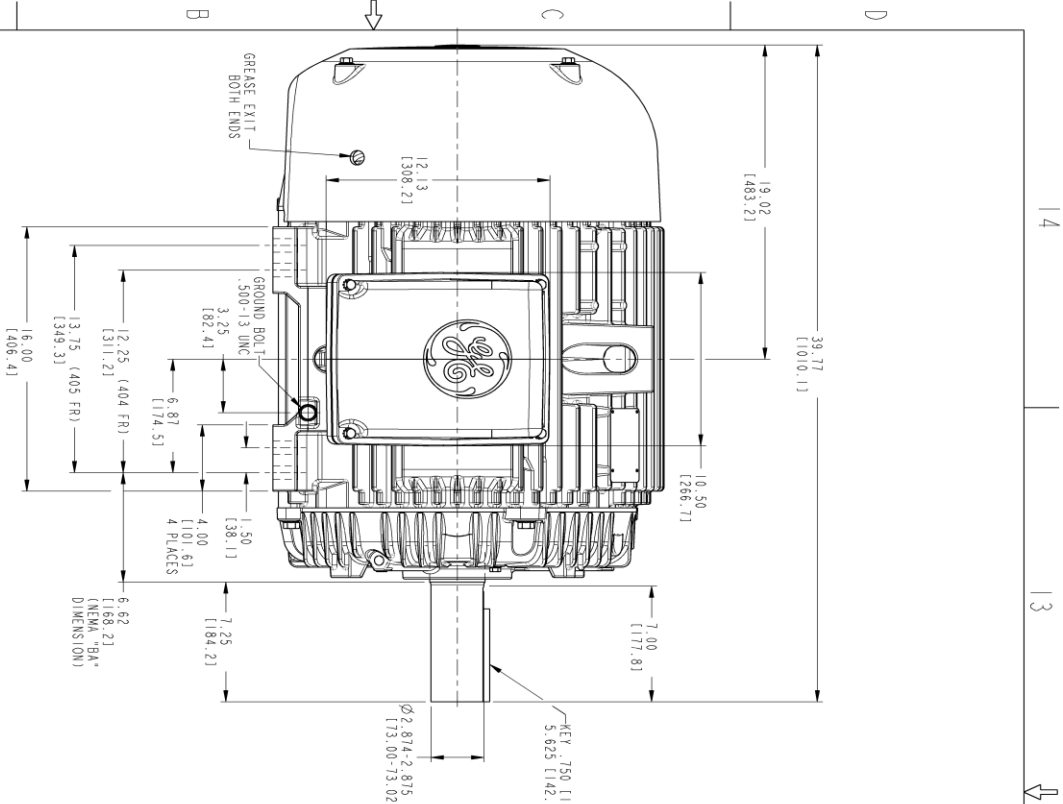
This motor is capable of two cold or one hot start with a maximum connected load inertia of 4906 Lb-Ft Sq (206.54 Kg-meter Sq)at 100% voltage, where the load torque varies with the square of the speed. Acceleration time with maximum inertia and the above load type is 42 seconds. Safe stall time at 100% voltage is 103 seconds cold, 56 seconds hot. Rotor inertia is 30.64 Lb-Ft Sq (1.29 Kg-meter Sq).

Open Circuit A-C:	0.58	Short Circuit D-C:	0.021
Short Circuit A-C:	0.038	X/R Ratio:	7.766
Stator Slots:	72	Rotor Slots:	58

Speed Torque Current Curve (First Connection, First Speed)



Marks:



PROHIBITION INFORMATION
 All GE products are designed and manufactured in the United States of America. GE products are not to be used in any application where the failure of the product could result in personal injury or death. The user is responsible for determining the suitability of the product for the intended application. The manufacturer is not responsible for any damage or injury resulting from the use of the product in an unauthorized manner.

REV.	DESCRIPTION	DATE	APPROVED

- NOTES:
- CONDUIT BOX MAY BE PLACED WITH THE ENTRANCE DOWN, UP OR ON EITHER SIDE.
 - F-1 ASSEMBLY AS SHOWN.
 - ALL DIMENSIONS ARE IN INCHES. BRACKETED DIMENSIONS ARE METRIC (MILLIMETERS).



SIGNATURES	DATE
MODEL PRASAKMA 04/01/21	
REVIEW PRASAKMA 04/01/21	
CHECKED BISHU 04/01/21	
DRAWN PRASAKMA 04/01/21	
DATE	
ISSUED PRASAKMA 04/01/21	

GE INDUSTRIAL MOTORS
 a WOLSKEL company

OUTLINE
 404/405 T TEFC XSD
 700 CU IN CONDUIT BOX, GROUND PAD

SCALE: 0.250 REF. No: 239C6400ZJ

239C6400ZJ
 REV. 000
 SHEET 1 OF 1

Marks:

Connection Diagram
GEM2034E-FIG3



End shield Assembly		
Part Description	DE Side Part#	ODE Side Part#
End Shield	115E4304AA1	115E4304LL1
Bearing	235A2518AC01	235A2518AC01
Slinger/Inproseal	149C4399G06	149C4399G06

Fan & Fan Cover Assembly	
Part Description	Part#
Fan	159C7100G02
Fan Cover	128D6832AA1

Conduit & Accessories Box Assembly	
Part Description	Part#
Conduit Box	118D4408AD2

Mechanical Accessories	
Part Description	Part#
Brake	
Tachometer	

