



**GE INDUSTRIAL MOTORS**  
a **WOLONG** company

# Product Technical Information

July 5, 2021

Data shown is for the current revision model #. Ensure your nameplate model # matches.

<b>Model Number:</b>	<b>5KS447XAA2044C</b>
<b>Catalog Number:</b>	<b>M9362</b>
<b>Instruction Manual:</b>	GEI-56128
<b>Connection Diagram:</b>	GEM2034E-FIG7
<b>Outline Drawing:</b>	239C6800ZB

## Accessory Connection Diagrams

<b>Bearing Thermocouple:</b>	None	<b>Heater:</b>	None
<b>RTD:</b>	None	<b>Thermistor:</b>	None
<b>Thermostat:</b>	None	<b>Winding Thermocouple:</b>	None
<b>Bearing RTD:</b>	None		

## Table of Contents

Specification	01
Performance Characteristics	02
Outline Drawing	03
Connection Drawing(s)	04
Spare parts	05

Marks:

**MODEL NUMBER:** 5KS447XAA2044C  
**Outline Drawing:** 239C6800ZB  
**Connection Diagram:** GEM2034E-FIG7  
**Instruction Book:** GEI-56128  
**Design Code:** 49BD1177A  
**Type:** KS  
**Frame:** 447T  
**Phases:** 3  
**Poles:** 4  
**Output Power:** 200HP 148KW  
**RPM:** 1790  
**Voltage:** 460  
**Hertz:** 60  
**Amps - FL:** 219.0  
**Service Factor:** 1.15  
**Alt Service Factor:** --

**Estimated Weight:** 2770 Lbs  
**Time Rating:** CONT  
**Enclosure:** TEFC  
**Encl Construction:** 841  
**Ambient Max(°C):** 40  
**Alt Ambient Max(°C):** --  
**Insulation Class:** H  
**NEMA Design:** B  
**Nominal Efficiency:** 96.2 %  
**Guaranteed Efficiency:** 95.8 %  
**3/4 Load Efficiency:** --  
**KVA Code:** G  
**Max KVAR:** 43.5  
**Power Factor:** 89.0  
**Bearing - DE:** NU 318  
**Bearing - ODE:** 6318ZC3

Enclosure is Totally Enclosed Fan-Cooled

---

Stamped Nameplate Notes:

IEEE-STD-841-2009  
 ROLLER BEARING - FOR BELTED LOAD ONLY  
 DE BRG 90RU03M, ODE BRG 90BC03JP3  
 STAMP NP249A5564P051 AS BELOW:  
 MODEL:5KS447XAA2044C S/N: XXX  
 CSA CERTIFIED CSA09.2216219 FOR EX NA IIC 200 C GC  
 CL 1 ZONE2 AEX NA IIC 200C;CL 1 DIV2 GRP ABCD 200C  
 IN -25C <= AMB <= 40C, 1.0 SF ON SINE-WAVE PWR  
 SURF TEMP 260C AT 1.15SF ON SINE-WAVE PWR  
 OR 215 C VT OR 215 C CT OR 215 C CHP PWM CONTROL  
 ALTERNATE RATING FOR PWM CONTROL 1.0SF 40C AMB  
 VT 0-60 HZ, CT 45-60 HZ, CHP 60-75 HZ.  
 MAX RADIAL LOAD: 5500 LBF AT 4.25"  
 FROM SHAFT SHOULDER



**Additional Information:**

4P - T EXTN  
PAINTED FRAME ID & SHAFT,  
FAN COVER INSIDE & ODE E/S OUTSIDE  
C/BOX 700 CU IN - 3.00" NPT  
INPRO SEAL BOTH ENDS  
OIL RESISTANT SLEEVING ON LEADS  
.002" TIR SHAFT RUNOUT  
ROUTINE TEST REPORT AND 5 POINT VIBRATION TEST  
REPORT INCLUDED IN C/B  
COPPER WASHER UNDER HEADS OF BEARING CAP BOLTS,  
APPLY TITE-SEAL (A50CD427A) ON BEARING CAP SCREWS,  
RABBETS AND PLUG THREADS.  
B5F4C4 HIGH FATIGUE STEEL AISI 4142 SHAFT MATERIAL  
GROUND PAD  
F1 MOUNTING



**Performance Characteristics**

1st Winding 1st Connection

**Design: 49BD1177A**

**Marks:**

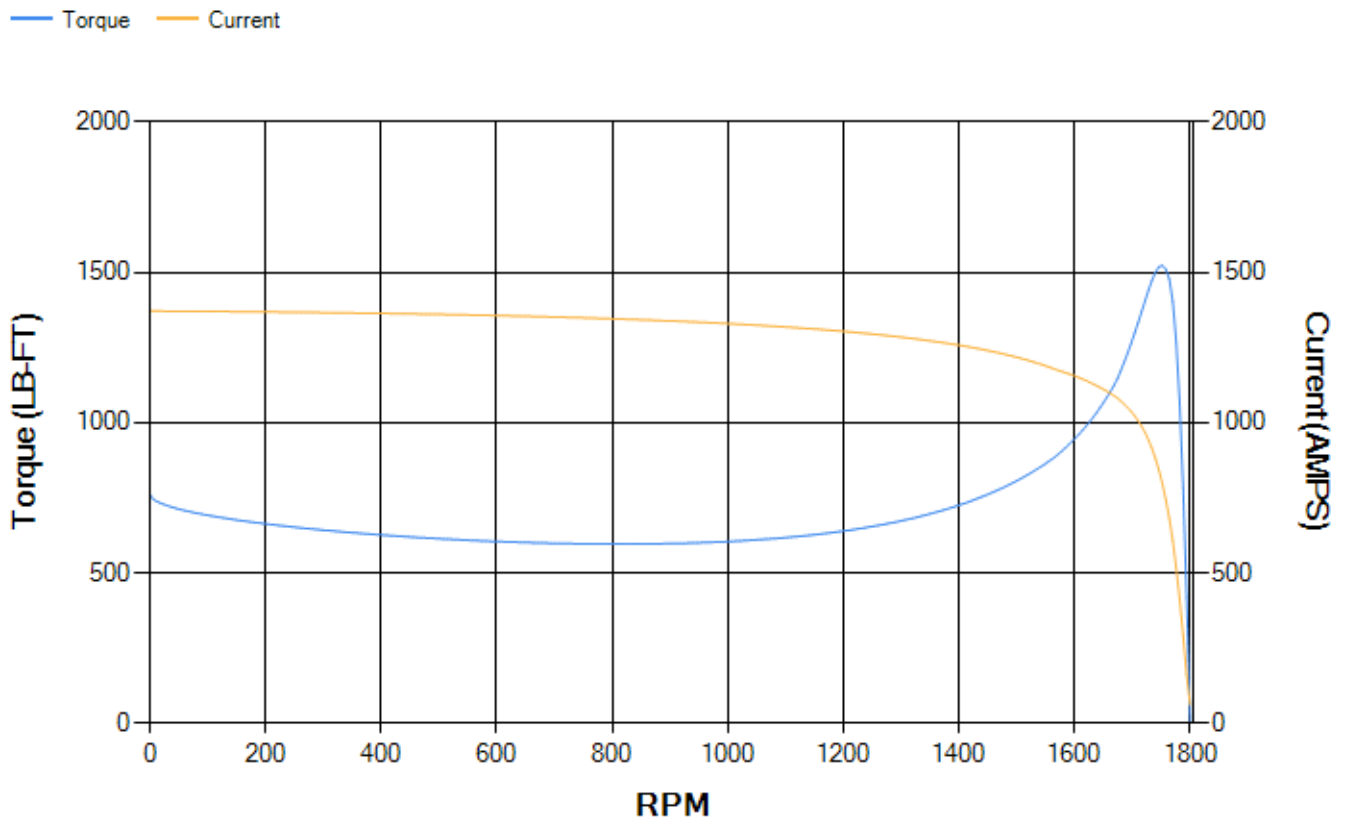
LOAD %	125.0	115.0	100.0	75.0	50.0	25.0	0.0
% EFF	95.58	95.82	96.34	96.52	96.53	95.25	0.00
% PF	89.2	89.16	88.76	86.63	80.37	60.76	3.08
AMPS	274.46	251.96	218.92	167.91	120.64	80.86	60.67

<b>TORQ(FL)#FT</b>	586.55	<b>TORQ(LR)%FL</b>	130.07	<b>TORQ(BD)%FL</b>	259.52
<b>AMPS(LR)</b>	1371.64	<b>PF AT START</b>	0.25		

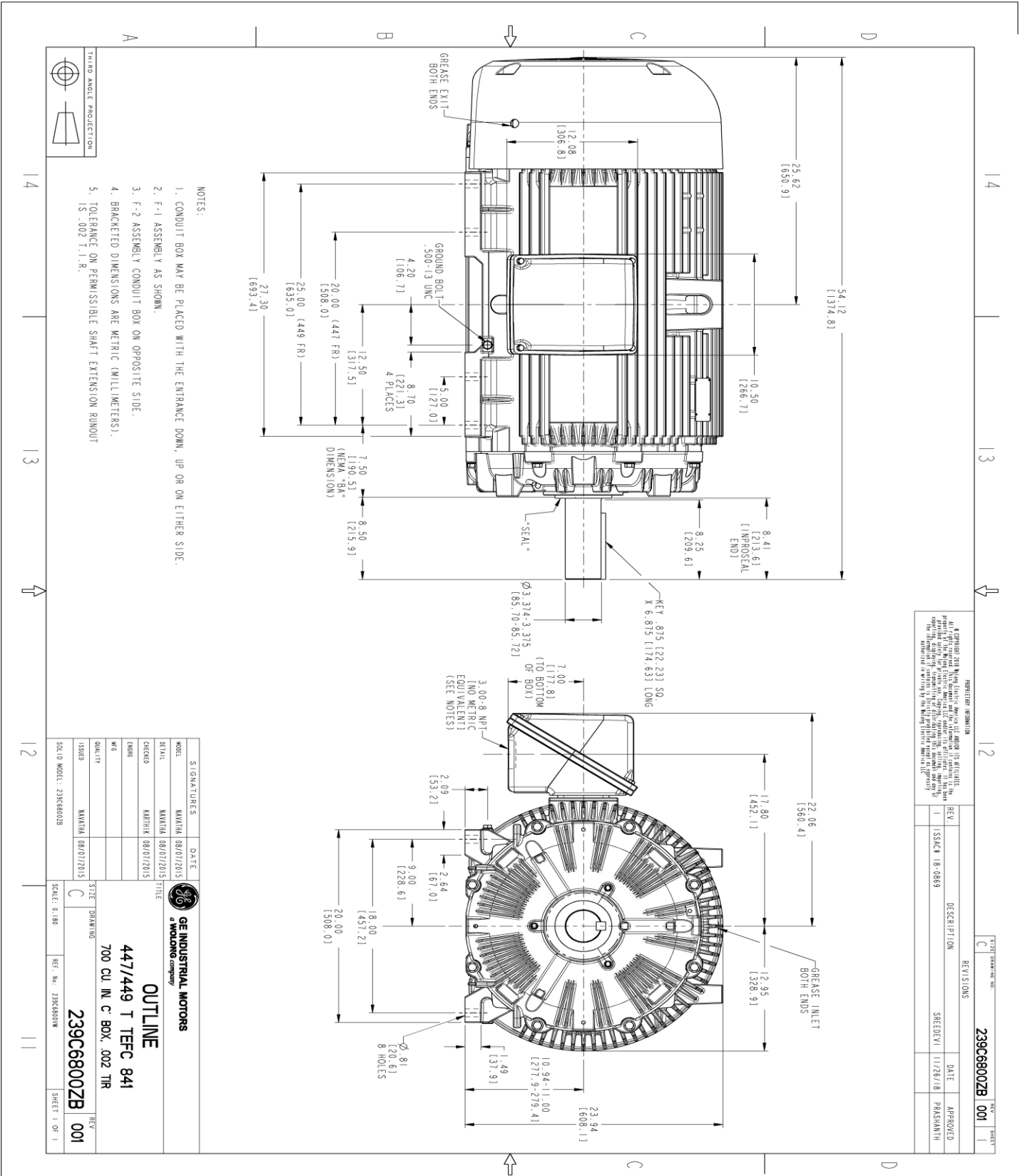
This motor is capable of two cold or one hot start with a maximum connected load inertia of 4712 Lb-Ft Sq (198.38 Kg-meter Sq)at 100% voltage, where the load torque varies with the square of the speed. Acceleration time with maximum inertia and the above load type is 54 seconds. Safe stall time at 100% voltage is 163 seconds cold, 84 seconds hot. Rotor inertia is 105.05 Lb-Ft Sq (4.42 Kg-meter Sq).

<b>Open Circuit A-C:</b>	1.749	<b>Short Circuit D-C:</b>	0.027
<b>Short Circuit A-C:</b>	0.07	<b>X/R Ratio:</b>	10.252
<b>Stator Slots:</b>	72	<b>Rotor Slots:</b>	58

**Speed Torque Current Curve (First Connection, First Speed)**



Marks:



- NOTES:
1. CONDUIT BOX MAY BE PLACED WITH THE ENTRANCE DOWN, UP OR ON EITHER SIDE.
  2. F-1 ASSEMBLY AS SHOWN.
  3. F-2 ASSEMBLY CONDUIT BOX ON OPPOSITE SIDE.
  4. BRACKETED DIMENSIONS ARE METRIC (MILLIMETERS).
  5. TOLERANCE ON PERMISSIBLE SHAFT EXTENSION RUNOUT IS .002 T.I.R.

REVISION INFORMATION

REV.	DESCRIPTION	DATE	APPROVED
1	ISSUE# 18-0869	11/26/18	PARSHANTH

SHEET DRAWING NO. **239C6800ZB 001**

SIGNATURES	DATE
MODEL: MAMTHA 08/07/2015	
DESIGN: MAMTHA 08/07/2015	
CHECKED: MAMTHA 08/07/2015	
DATE: MAMTHA 08/07/2015	
ISSUED: MAMTHA 08/07/2015	

**GE INDUSTRIAL MOTORS**  
A WOLONG company

**OUTLINE**  
447/449 T TFC 841  
700 CU IN. C BOX, 502 TR

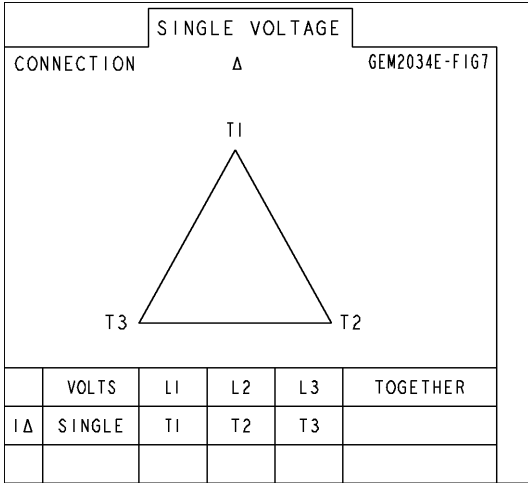
SCALE: 0.180 REF. NO: 239C6800W

**239C6800ZB 001**

SHEET 1 OF 1

**Marks:**

**Connection Diagram**  
**GEM2034E-FIG7**



End shield Assembly		
Part Description	DE Side Part#	ODE Side Part#
End Shield	115E4355AA1	115E4355LF1
Bearing	235A2519AA01	235A2514AG01
Slinger/Inproseal	235A4575GS5	235A4575GS5

Fan & Fan Cover Assembly	
Part Description	Part#
Fan	159C7100AA2
Fan Cover	128D6841AA1

Conduit & Accessories Box Assembly	
Part Description	Part#
Conduit Box	118D4408AD2

Mechanical Accessories	
Part Description	Part#
Brake	
Tachometer	

