



GE INDUSTRIAL MOTORS
a **WOLONG** company

Product Technical Information

October 24, 2020

Data shown is for the current revision model #. Ensure your nameplate model # matches.

Model Number:	5KS447XAA2045C
Catalog Number:	M9363
Instruction Manual:	GEI-56128
Connection Diagram:	GEM2034E-FIG7
Outline Drawing:	239C6800ZB

Accessory Connection Diagrams

Bearing Thermocouple:	None	Heater:	None
RTD:	None	Thermistor:	None
Thermostat:	None	Winding Thermocouple:	None
Bearing RTD:	None		

Table of Contents

Specification	01
Performance Characteristics	02
Outline Drawing	03
Connection Drawing(s)	04
Spare parts	05

Marks:

MODEL NUMBER: 5KS447XAA2045C
Outline Drawing: 239C6800ZB
Connection Diagram: GEM2034E-FIG7
Instruction Book: GEI-56128
Design Code: 49BD1177B
Type: KS
Frame: 447T
Phases: 3
Poles: 4
Output Power: 200HP 148KW
RPM: 1790
Voltage: 575
Hertz: 60
Amps - FL: 175.0
Service Factor: 1.15
Alt Service Factor: --

Estimated Weight: 2770 Lbs
Time Rating: CONT
Enclosure: TEFC
Encl Construction: 841
Ambient Max(°C): 40
Alt Ambient Max(°C): --
Insulation Class: H
NEMA Design: B
Nominal Efficiency: 96.2 %
Guaranteed Efficiency: 95.8 %
3/4 Load Efficiency: --
KVA Code: G
Max KVAR: 42.7
Power Factor: 89.0
Bearing - DE: NU 318
Bearing - ODE: 6318ZC3

Enclosure is Totally Enclosed Fan-Cooled

Stamped Nameplate Notes:

IEEE-STD-841-2009
 ROLLER BEARING - FOR BELTED LOAD ONLY
 DE BRG 90RU03M, ODE BRG 90BC03JP3
 STAMP NP249A5564P051 AS BELOW:
 MODEL:5KS447XAA2045C S/N: XXX
 CSA CERTIFIED CSA09.2216219 FOR EX NA IIC 200 C GC
 CL 1 ZONE2 AEX NA IIC 200C;CL 1 DIV2 GRP ABCD 200C
 IN -25C <= AMB <= 40C, 1.0 SF ON SINE-WAVE PWR
 SURF TEMP 260C AT 1.15SF ON SINE-WAVE PWR
 OR 215 C VT OR 215 C CT OR 215 C CHP PWM CONTROL
 ALTERNATE RATING FOR PWM CONTROL 1.0SF 40C AMB
 VT 0-60 HZ, CT 45-60 HZ, CHP 60-75 HZ.
 MAX RADIAL LOAD: 5500 LBF AT 4.25"
 FROM SHAFT SHOULDER



Additional Information:

4P - T EXTN
PAINTED FRAME ID & SHAFT,
FAN COVER INSIDE & ODE E/S OUTSIDE
C/BOX 700 CU IN - 3.00" NPT
INPRO SEAL BOTH ENDS
OIL RESISTANT SLEEVING ON LEADS
.002" TIR SHAFT RUNOUT
ROUTINE TEST REPORT AND 5 POINT VIBRATION TEST
REPORT INCLUDED IN C/B
COPPER WASHER UNDER HEADS OF BEARING CAP BOLTS,
APPLY TITE-SEAL (A50CD427A) ON BEARING CAP SCREWS,
RABBETS AND PLUG THREADS.
B5F4C4 HIGH FATIGUE STEEL AISI 4142 SHAFT MATERIAL
GROUND PAD
F1 MOUNTING



Performance Characteristics

1st Winding 1st Connection

Design: 49BD1177B

Marks:

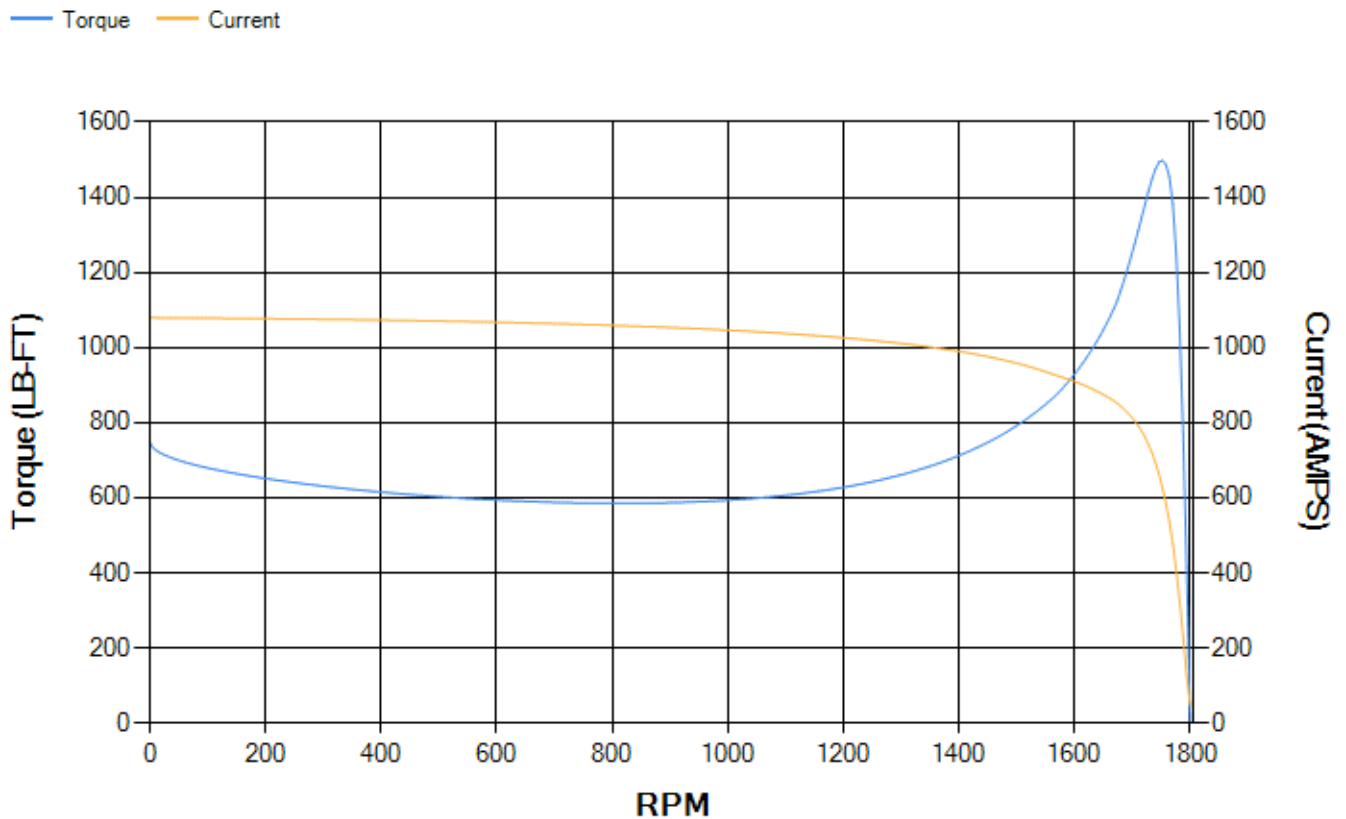
LOAD %	125.0	115.0	100.0	75.0	50.0	25.0	0.0
% EFF	95.53	95.78	96.31	96.5	96.53	95.28	0.00
% PF	89.2	89.2	88.85	86.83	80.76	61.41	3.11
AMPS	219.66	201.57	175.01	134.04	96.05	63.99	47.63

TORQ(FL)#FT	586.61	TORQ(LR)%FL	127.72	TORQ(BD)%FL	255.22
AMPS(LR)	1079.27	PF AT START	0.25		

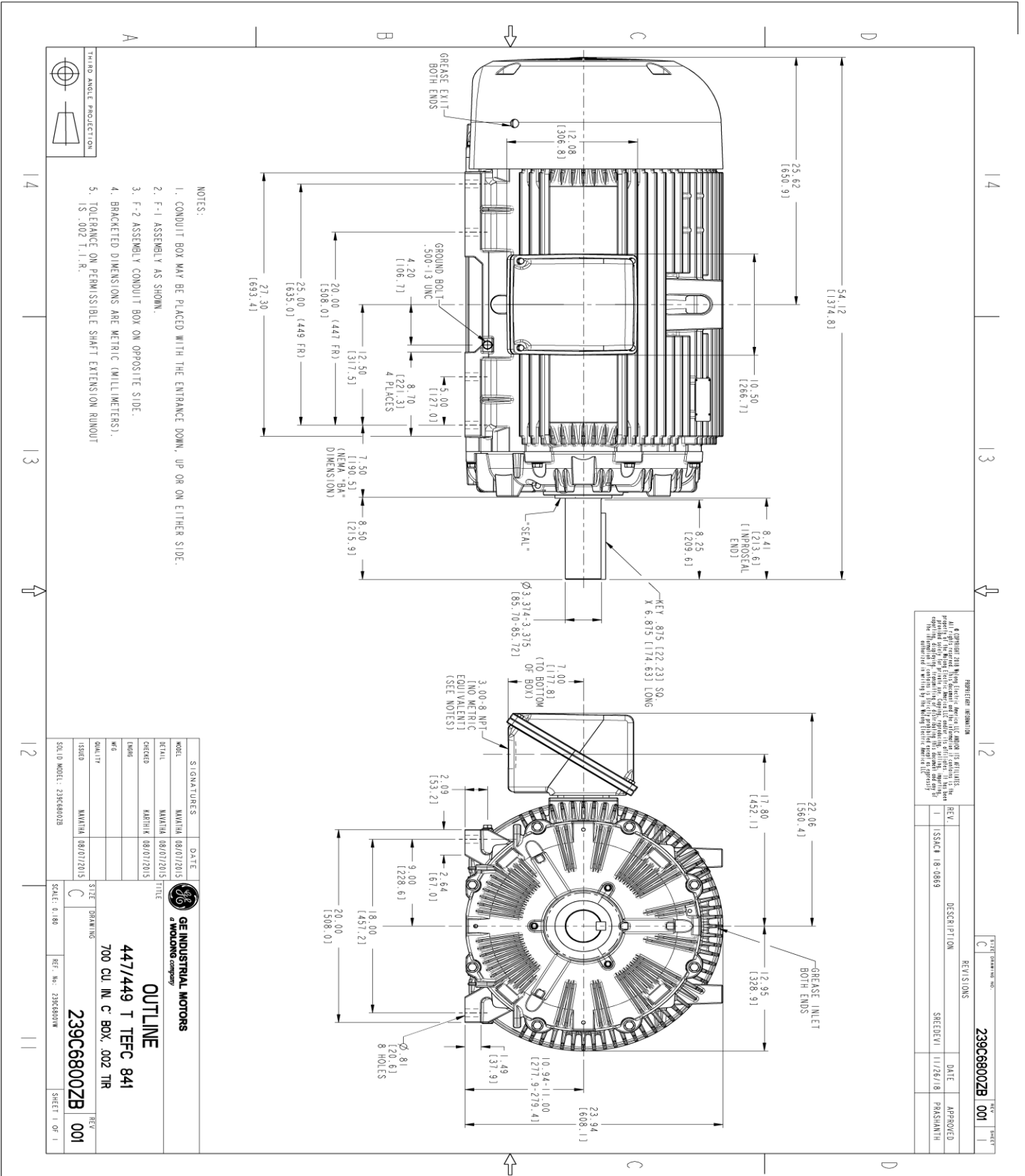
This motor is capable of two cold or one hot start with a maximum connected load inertia of 4688 Lb-Ft Sq (197.36 Kg-meter Sq)at 100% voltage, where the load torque varies with the square of the speed. Acceleration time with maximum inertia and the above load type is 55 seconds. Safe stall time at 100% voltage is 168 seconds cold, 86 seconds hot. Rotor inertia is 105.05 Lb-Ft Sq (4.42 Kg-meter Sq).

Open Circuit A-C:	1.75	Short Circuit D-C:	0.027
Short Circuit A-C:	0.07	X/R Ratio:	10.288
Stator Slots:	72	Rotor Slots:	58

Speed Torque Current Curve (First Connection, First Speed)



Marks:



- NOTES:
1. CONDUIT BOX MAY BE PLACED WITH THE ENTRANCE DOWN, UP OR ON EITHER SIDE.
 2. F-1 ASSEMBLY AS SHOWN.
 3. F-2 ASSEMBLY CONDUIT BOX ON OPPOSITE SIDE.
 4. BRACKETED DIMENSIONS ARE METRIC (MILLIMETERS).
 5. TOLERANCE ON PERMISSIBLE SHAFT EXTENSION RUNOUT IS .002 T.I.R.

REVISION INFORMATION

REV.	DESCRIPTION	DATE	APPROVED
1	ISSUE# 18-0869	11/26/18	PARSHANTH

SHEET DRAWING NO. **239C6800ZB 001**

REV. 1 OF 1

SIGNATURES	DATE
MODEL: MAMTHA 08/07/2015	
REVIEW: MAMTHA 08/07/2015	
CHECKED: KARTHICK 08/07/2015	
DESIGN: MAMTHA 08/07/2015	
DATE: 08/07/2015	
ISSUED: MAMTHA 08/07/2015	
SCALE: 0.180	

GE INDUSTRIAL MOTORS
A WOLONG company

OUTLINE
447/449 T TFC 841
700 CU IN. C BOX, 002 THR

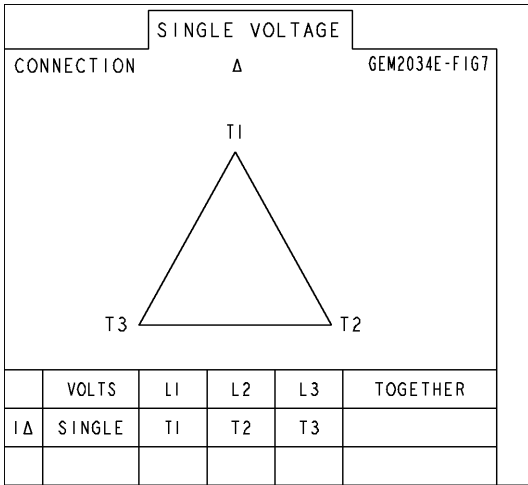
239C6800ZB 001

SCALE: 0.180 REF. NO: 239C6800W

SHEET 1 OF 1

Marks:

Connection Diagram
GEM2034E-FIG7



End shield Assembly		
Part Description	DE Side Part#	ODE Side Part#
End Shield	115E4355AA1	115E4355LF1
Bearing	235A2519AA01	235A2514AG01
Slinger/Inproseal	235A4575GS5	235A4575GS5

Fan & Fan Cover Assembly	
Part Description	Part#
Fan	159C7100AA2
Fan Cover	128D6841AA1

Conduit & Accessories Box Assembly	
Part Description	Part#
Conduit Box	118D4408AD2

Mechanical Accessories	
Part Description	Part#
Brake	
Tachometer	

