



GE INDUSTRIAL MOTORS
a **WOLONG** company

Product Technical Information

October 24, 2020

Data shown is for the current revision model #. Ensure your nameplate model # matches.

Model Number:	5KS449XAA287C
Catalog Number:	M9368
Instruction Manual:	GEI-56128
Connection Diagram:	GEM2034E-FIG20
Outline Drawing:	239C6800ZE

Accessory Connection Diagrams

Bearing Thermocouple:	None	Heater:	None
RTD:	None	Thermistor:	None
Thermostat:	None	Winding Thermocouple:	None
Bearing RTD:	None		

Table of Contents

Specification	01
Performance Characteristics	02
Outline Drawing	03
Connection Drawing(s)	04
Spare parts	05

Marks:

MODEL NUMBER:	5KS449XAA287C	Estimated Weight:	3100 Lbs
Outline Drawing:	239C6800ZE	Time Rating:	CONT
Connection Diagram:	GEM2034E-FIG20	Enclosure:	TEFC
Instruction Book:	GEI-56128	Encl Construction:	841
Design Code:	49BD1180A	Ambient Max(°C):	40
Type:	KS	Alt Ambient Max(°C):	--
Frame:	449T	Insulation Class:	H
Phases:	3	NEMA Design:	B
Poles:	4	Nominal Efficiency:	96.5 %
Output Power:	250HP 185KW	Guaranteed Efficiency:	96.2 %
RPM:	1790	3/4 Load Efficiency:	--
Voltage:	460	KVA Code:	G
Hertz:	60	Max KVAR:	48.7
Amps - FL:	272.0	Power Factor:	89.0
Service Factor:	1.15	Bearing - DE:	NU 318
Alt Service Factor:	--	Bearing - ODE:	6318ZC3

Enclosure is Totally Enclosed Fan-Cooled

Stamped Nameplate Notes:

IEEE-STD-841-2009

ROLLER BEARING - FOR BELTED LOAD ONLY

DE BRG 90RU03M, ODE BRG 90BC03JP3

STAMP NP249A5564P051 AS BELOW:

MODEL:5KS449XAA287C S/N: XXX

CSA CERTIFIED CSA09.2216219 FOR EX NA IIC 200 C GC

CL 1 ZONE2 AEX NA IIC 200C;CL 1 DIV2 GRP ABCD 200C

IN -25C <= AMB <= 40C, 1.0 SF ON SINE-WAVE PWR

SURF TEMP 260C AT 1.15SF ON SINE-WAVE PWR

OR 215 C VT OR 230 C CT OR 215 C CHP PWM CONTROL

ALTERNATE RATING FOR PWM CONTROL 1.0SF 40C AMB

VT 0-60 HZ, CT 45-60 HZ, CHP 60-75 HZ.

MAX RADIAL LOAD: 5400 LBF AT 4.25"

FROM SHAFT SHOULDER



Additional Information:

4P - T EXTN - SPLIT LEAD
PAINTED FRAME ID & SHAFT,
FAN COVER INSIDE & ODE E/S OUTSIDE
C/BOX 1260 CU IN - 2(4.00" NPT)
C/B GRD PLATE
INPRO SEAL BOTH ENDS
OIL RESISTANT SLEEVING ON LEADS
.002" TIR SHAFT RUNOUT
ROUTINE TEST REPORT AND 5 POINT VIBRATION TEST
REPORT INCLUDED IN C/B
COPPER WASHER UNDER HEADS OF BEARING CAP BOLTS,
APPLY TITE-SEAL (A50CD427A) ON BEARING CAP SCREWS,
RABBETS AND PLUG THREADS.
B5F4C4 HIGH FATIGUE STEEL AISI 4142 SHAFT MATERIAL
GROUND PAD
F1 MOUNTING



Performance Characteristics

1st Winding 1st Connection

Design: 49BD1180A

Marks:

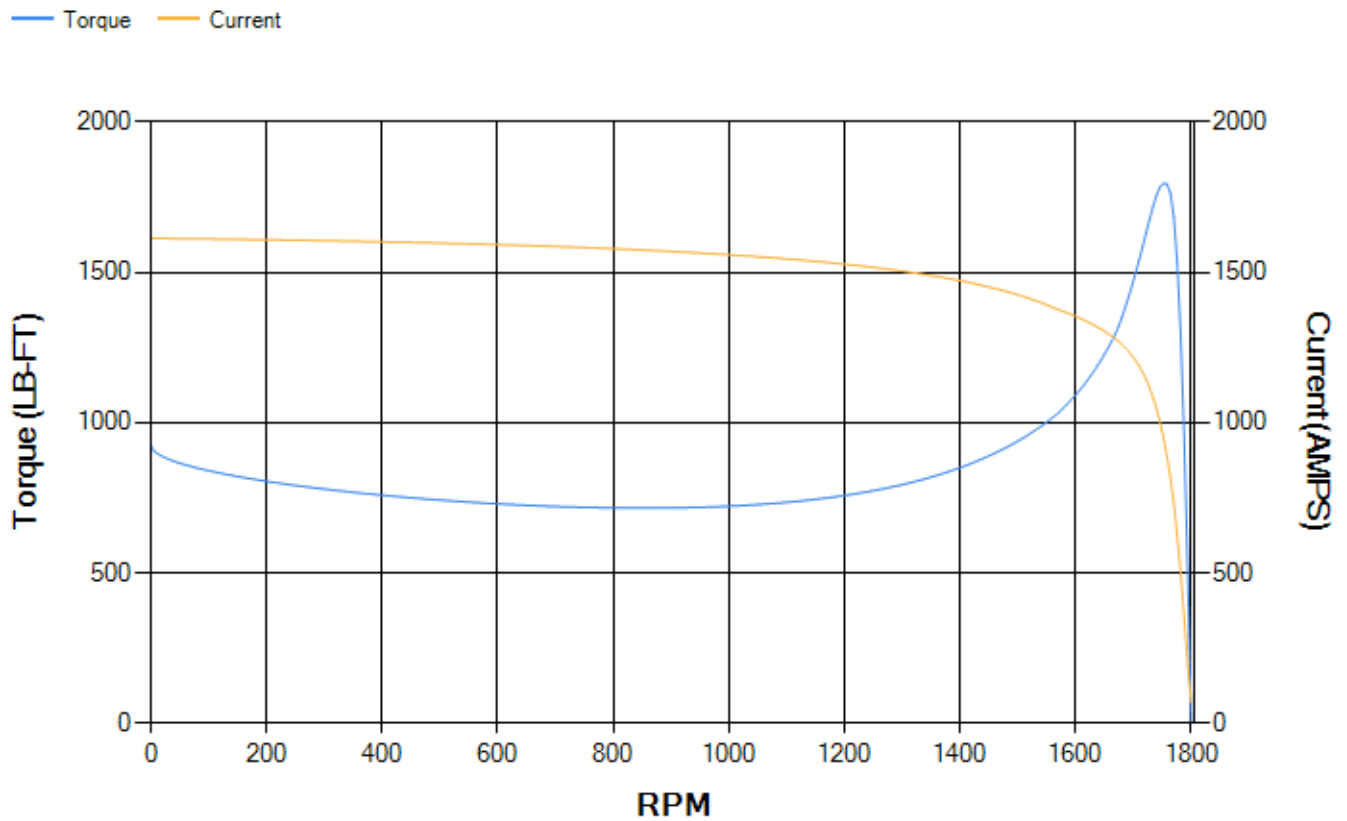
LOAD %	125.0	115.0	100.0	75.0	50.0	25.0	0.0
% EFF	95.92	96.15	96.64	96.77	96.75	95.49	0.00
% PF	89.24	89.36	89.22	87.66	82.4	64.37	3.31
AMPS	341.68	313.18	271.39	206.87	146.75	95.17	67.97

TORQ(FL)#FT	733.36	TORQ(LR)%FL	126.24	TORQ(BD)%FL	244.7
AMPS(LR)	1613.44	PF AT START	0.23		

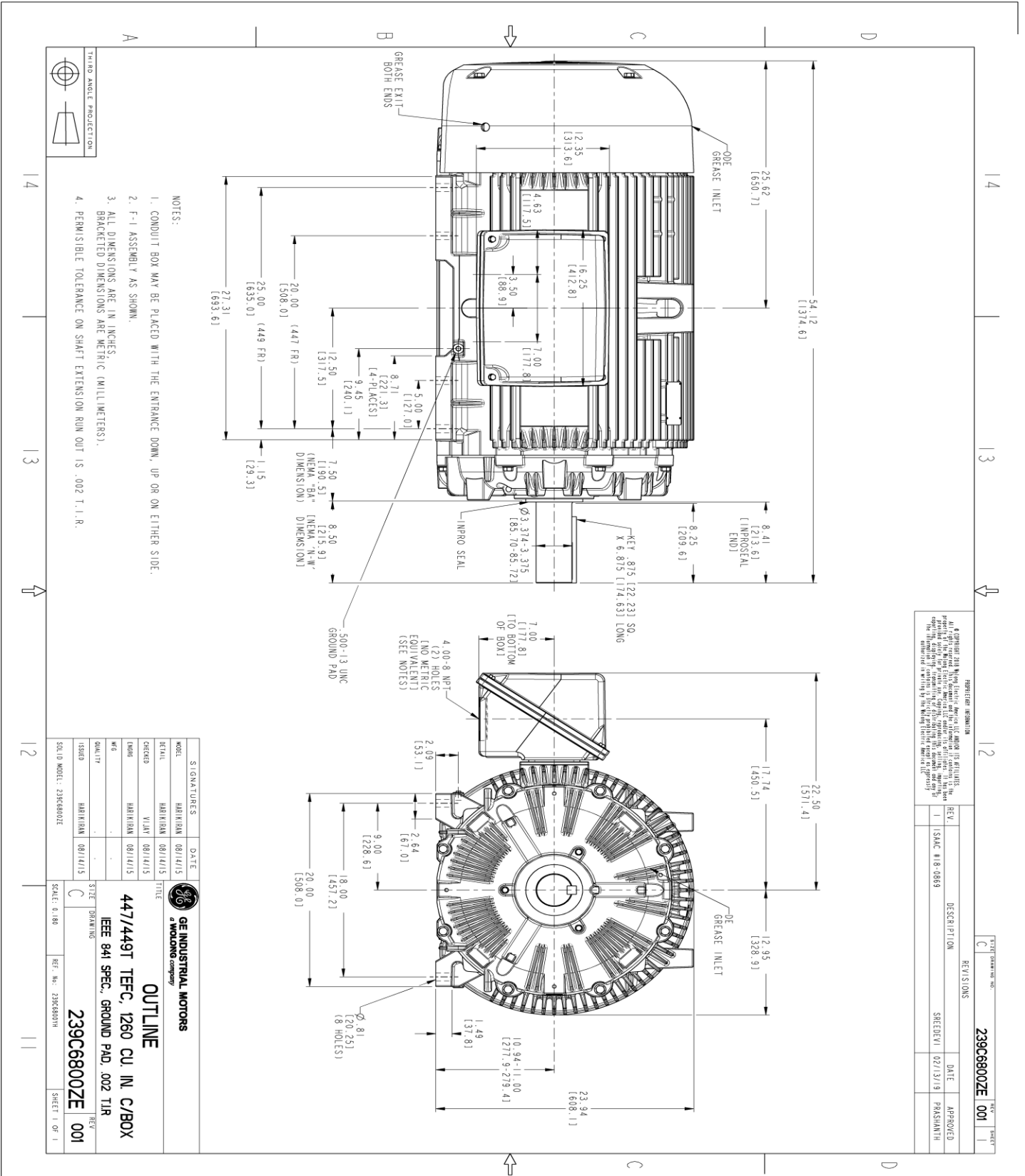
This motor is capable of two cold or one hot start with a maximum connected load inertia of 7642 Lb-Ft Sq (321.73 Kg-meter Sq)at 100% voltage, where the load torque varies with the square of the speed. Acceleration time with maximum inertia and the above load type is 75 seconds. Safe stall time at 100% voltage is 186 seconds cold, 90 seconds hot. Rotor inertia is 137.24 Lb-Ft Sq (5.78 Kg-meter Sq).

Open Circuit A-C:	1.87	Short Circuit D-C:	0.037
Short Circuit A-C:	0.071	X/R Ratio:	14.104
Stator Slots:	72	Rotor Slots:	58

Speed Torque Current Curve (First Connection, First Speed)



Marks:



- NOTES:
1. CONDUIT BOX MAY BE PLACED WITH THE ENTRANCE DOWN, UP OR ON EITHER SIDE.
 2. F-I ASSEMBLY AS SHOWN.
 3. ALL DIMENSIONS ARE IN INCHES. BRACKETED DIMENSIONS ARE METRIC (MILLIMETERS).
 4. PERMISSIBLE TOLERANCE ON SHAFT EXTENSION RUN OUT IS .002 I. I. R.

PROHIBITION INFORMATION
 © Copyright 2018 Wabtec Electric America LLC and/or its affiliates. No part of this document may be reproduced, stored in a retrieval system, or transmitted in any form or by any means, electronic, mechanical, photocopying, recording, or by any information storage and retrieval system, without the prior written permission of Wabtec Electric America LLC. The information contained herein is the confidential property of Wabtec Electric America LLC.

REV.	DESCRIPTION	DATE	APPROVED
1	ISAC #18-0869	02/13/19	PARSHANTH

SIGNATURES	DATE	TITLE
HARIHARAN	08/14/15	DESIGNER
HARIHARAN	08/14/15	CHECKER
VILAY	08/14/15	DRAWN
HARIHARAN	08/14/15	QUALITY
HARIHARAN	08/14/15	SCALE: 0.180

GE INDUSTRIAL MOTORS
 a WOLONG company

OUTLINE

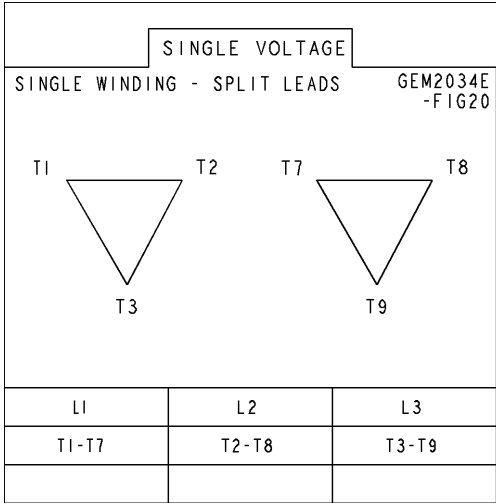
447/449T TECFC, 1260 CU. IN. C/BOX
 IEEE 841 SPEC., GROUND PAD, .002 TIR

239C6800ZE

SHEET 1 OF 1

Marks:

Connection Diagram
GEM2034E-FIG20



End shield Assembly		
Part Description	DE Side Part#	ODE Side Part#
End Shield	115E4355AA1	115E4355LF1
Bearing	235A2519AA01	235A2514AG01
Slinger/Inproseal	235A4575GS5	235A4575GS5

Fan & Fan Cover Assembly	
Part Description	Part#
Fan	159C7100AA2
Fan Cover	128D6841AA1

Conduit & Accessories Box Assembly	
Part Description	Part#
Conduit Box	179B9058G03

Mechanical Accessories	
Part Description	Part#
Brake	
Tachometer	

