



GE INDUSTRIAL MOTORS
a **WOLONG** company

Product Technical Information

June 25, 2020

Data shown is for the current revision model #. Ensure your nameplate model # matches.

Model Number:	5KS449XAA352B
Catalog Number:	M9370
Instruction Manual:	GEI-56128
Connection Diagram:	GEM2034E-FIG8
Outline Drawing:	239C6800ZE

Accessory Connection Diagrams			
Bearing Thermocouple:	None	Heater:	None
RTD:	None	Thermistor:	None
Thermostat:	None	Winding Thermocouple:	None
Bearing RTD:	None		

Table of Contents

Specification	01
Performance Characteristics	02
Outline Drawing	03
Connection Drawing(s)	04
Spare parts	05

Marks:

MODEL NUMBER:	5KS449XAA352B	Estimated Weight:	3200 Lbs
Outline Drawing:	239C6800ZE	Time Rating:	CONT
Connection Diagram:	GEM2034E-FIG8	Enclosure:	TEFC
Instruction Book:	GEI-56128	Encl Construction:	841
Design Code:	49BD3064A	Ambient Max(°C):	40
Type:	KS	Alt Ambient Max(°C):	--
Frame:	449T	Insulation Class:	H
Phases:	3	NEMA Design:	B
Poles:	6	Nominal Efficiency:	95.8 %
Output Power:	250HP 185KW	Guaranteed Efficiency:	95.4 %
RPM:	1190	3/4 Load Efficiency:	96.2 %
Voltage:	460	KVA Code:	G
Hertz:	60	Max KVAR:	79.0
Amps - FL:	294.0	Power Factor:	83.0
Service Factor:	1.15	Bearing - DE:	NU 318
Alt Service Factor:	--	Bearing - ODE:	6318ZC3

Enclosure is Totally Enclosed Fan-Cooled

Stamped Nameplate Notes:

IEEE-STD-841-2009

ROLLER BEARING - FOR BELTED LOAD ONLY

DE BRG 90RU03M, ODE BRG 90BC03JP3

STAMP NP249A5564P051 AS BELOW:

MODEL:5KS449XAA352B S/N: XXX

CSA CERTIFIED CSA09.2216219 FOR EX NA IIC 200 C GC

CL 1 ZONE2 AEX NA IIC 200C;CL 1 DIV2 GRP ABCD 200C

IN -25C <= AMB <= 40C, 1.0 SF ON SINE-WAVE PWR

SURF TEMP 260C AT 1.15SF ON SINE-WAVE PWR

OR 200C VT OR 230C CT OR 200C CHP PWM CONTROL

ALTERNATE RATING FOR PWM CONTROL 1.0SF 40C AMB

VT 0 - 60 HZ, CT 45-60 HZ, CHP 60-90 HZ.



Additional Information:

6P - T EXTN - SPLIT LEAD
PAINTED FRAME ID & SHAFT,
FAN COVER INSIDE & ODE E/S OUTSIDE
1260 CU IN - 2(4.00" NPT) WITH DRAIN HOLES
C/B GRD PLATE
INPRO SEAL BOTH ENDS
OIL RESISTANT SLEEVING ON LEADS
.002" TIR SHAFT RUNOUT
ROUTINE TEST REPORT AND 5 POINT VIBRATION TEST
REPORT INCLUDED IN C/B
COPPER WASHER UNDER HEADS OF BEARING CAP BOLTS,
APPLY TITE-SEAL (A50CD427A) ON BEARING CAP SCREWS,
RABBETS AND PLUG THREADS.
B5F4C4 HIGH FATIGUE STEEL AISI 4142 SHAFT MATERIAL
GROUND PAD
F1 MOUNTING



Performance Characteristics

1st Winding 1st Connection

Design: 49BD3064A

Marks:

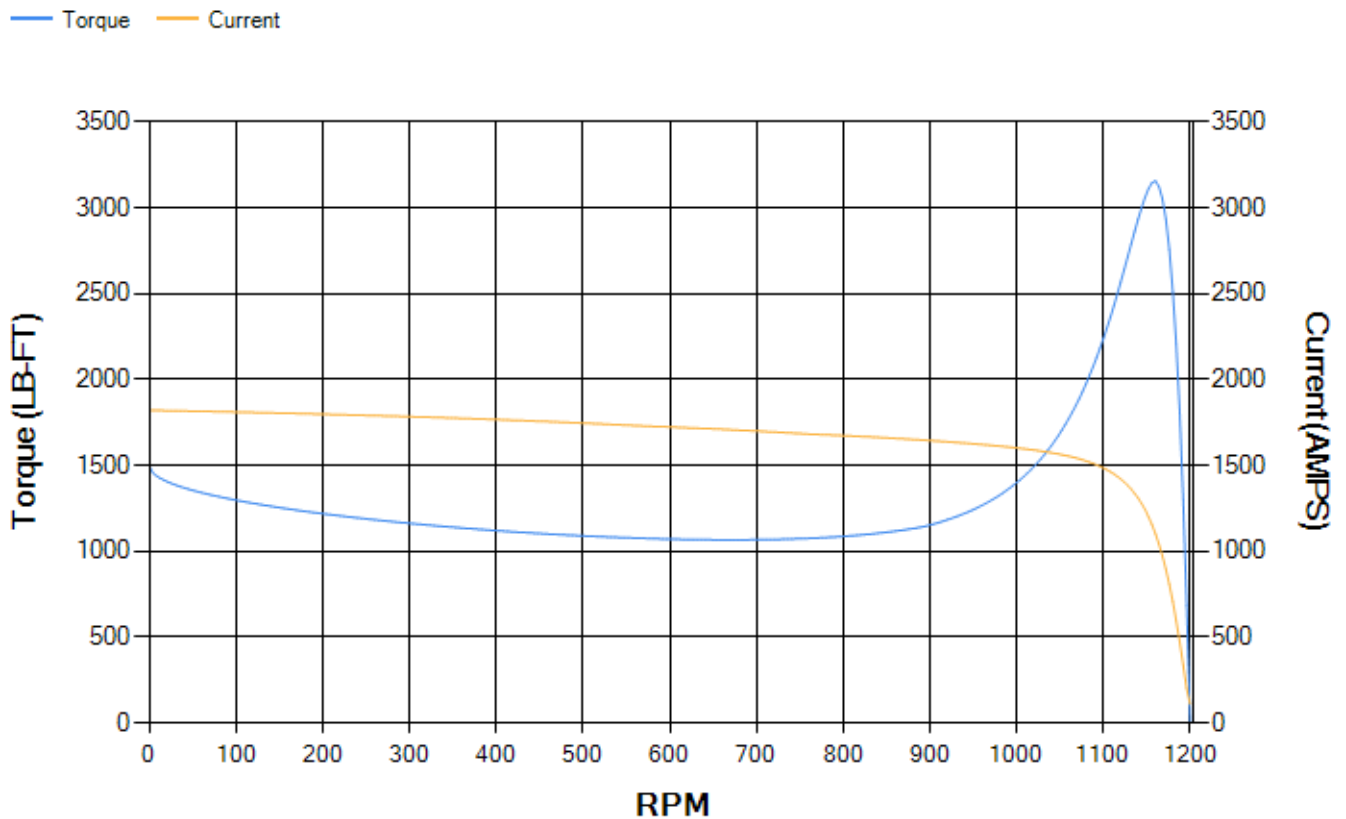
LOAD %	125.0	115.0	100.0	75.0	50.0	25.0	0.0
% EFF	95.34	95.58	96.07	96.16	96.01	94.26	0.00
% PF	84.56	84.18	83.09	79.14	69.77	47.46	2.68
AMPS	362.76	334.44	293.14	230.6	174.64	130.76	110.21

TORQ(FL)#FT	1100.76	TORQ(LR)%FL	135.84	TORQ(BD)%FL	286.42
AMPS(LR)	1822.27	PF AT START	0.23		

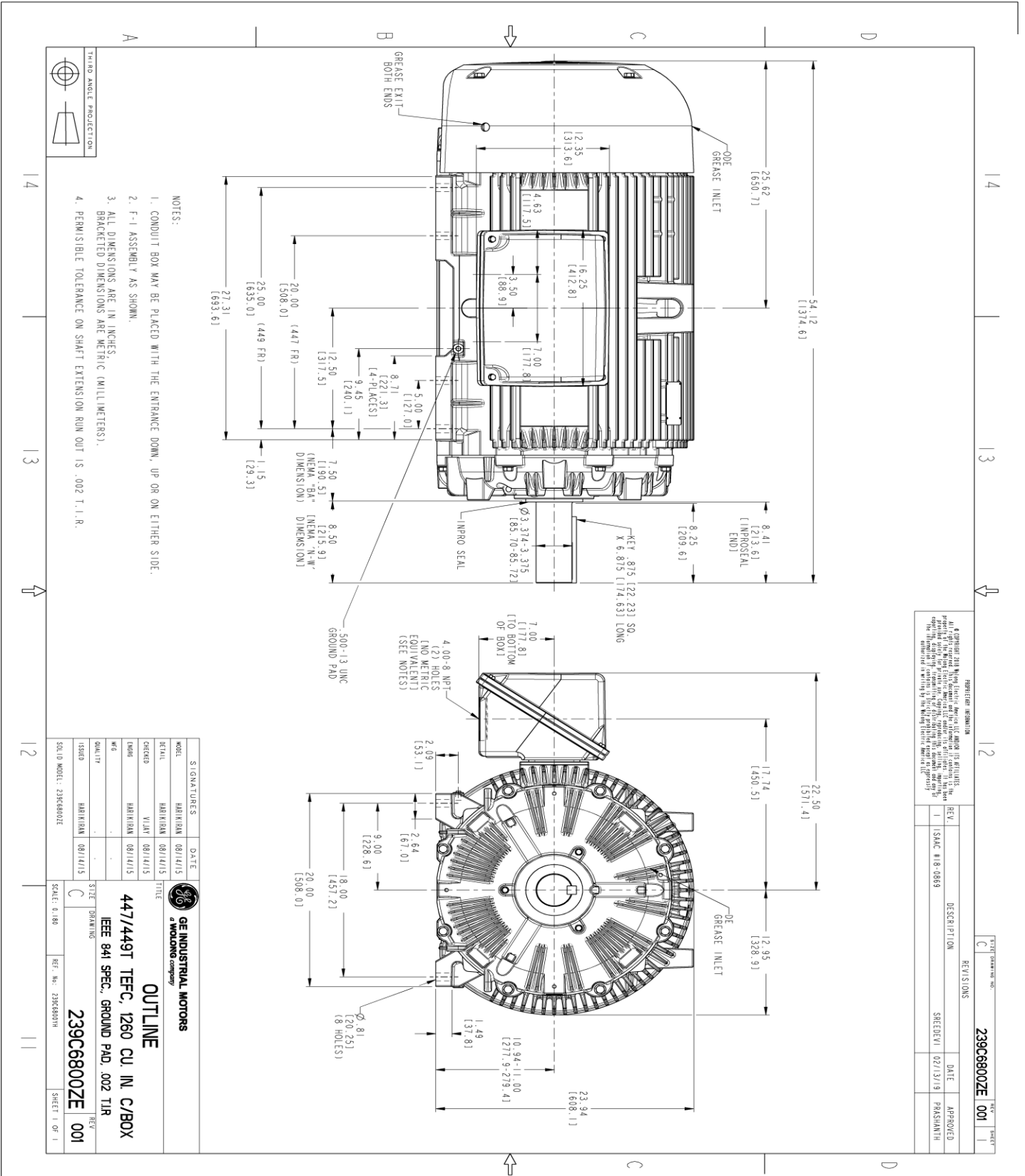
This motor is capable of two cold or one hot start with a maximum connected load inertia of 14702 Lb-Ft Sq (618.95 Kg-meter Sq)at 100% voltage, where the load torque varies with the square of the speed. Acceleration time with maximum inertia and the above load type is 61 seconds. Safe stall time at 100% voltage is 145 seconds cold, 73 seconds hot. Rotor inertia is 211.93 Lb-Ft Sq (8.92 Kg-meter Sq).

Open Circuit A-C:	1.072	Short Circuit D-C:	0.033
Short Circuit A-C:	0.06	X/R Ratio:	12.359
Stator Slots:	72	Rotor Slots:	58

Speed Torque Current Curve (First Connection, First Speed)



Marks:



NOTES:

1. CONDUIT BOX MAY BE PLACED WITH THE ENTRANCE DOWN, UP OR ON EITHER SIDE.
2. F-1 ASSEMBLY AS SHOWN.
3. ALL DIMENSIONS ARE IN INCHES. BRACKETED DIMENSIONS ARE METRIC (MILLIMETERS).
4. PERMISSIBLE TOLERANCE ON SHAFT EXTENSION RUN OUT IS .002 I. I. R.

REVISION INFORMATION
 1. REV. 1 ISAC #18-0869
 02/13/19 PRAASHANTH

REV.	DESCRIPTION	DATE	APPROVED
1	ISAC #18-0869	02/13/19	PRAASHANTH



THIRD ANGLE PROJECTION

SIGNATURES	DATE	TITLE
HARIHARAN	08/14/15	DESIGNER
HARIHARAN	08/14/15	CHECKED
VILAY	08/14/15	DRAWN
HARIHARAN	08/14/15	QC
HARIHARAN	08/14/15	SCALE: 0.180

GE INDUSTRIAL MOTORS
WOLONG company

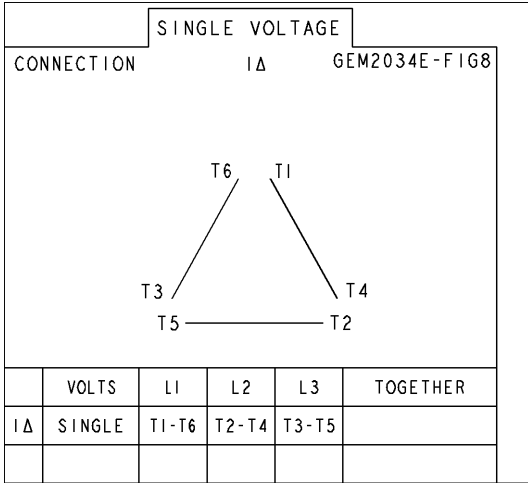
OUTLINE
 447/449T TECFC, 1260 CU. IN. C/BOX
 IEEE 841 SPEC., GROUND PAD, .002 TIR

239C6800ZE

SCALE: 0.180 REF. NO: 239C6800TH SHEET 1 OF 1

Marks:

Connection Diagram
GEM2034E-FIG8



End shield Assembly		
Part Description	DE Side Part#	ODE Side Part#
End Shield	115E4355AA1	115E4355LL1
Bearing	235A2519AA01	235A2514AG01
Slinger/Inproseal	235A4575GS5	235A4575GS5

Fan & Fan Cover Assembly	
Part Description	Part#
Fan	159C7100G03
Fan Cover	128D6841AA1

Conduit & Accessories Box Assembly	
Part Description	Part#
Conduit Box	179B9058AA-G02

Mechanical Accessories	
Part Description	Part#
Brake	
Tachometer	

