



GE INDUSTRIAL MOTORS
a **WOLONG** company

Product Technical Information

June 25, 2020

Data shown is for the current revision model #. Ensure your nameplate model # matches.

Model Number:	5KS326XAA340D
Catalog Number:	M9382
Instruction Manual:	GEI-56128
Connection Diagram:	GEM2034E-FIG7
Outline Drawing:	239C6001FR

Accessory Connection Diagrams

Bearing Thermocouple:	None	Heater:	None
RTD:	None	Thermistor:	None
Thermostat:	None	Winding Thermocouple:	None
Bearing RTD:	None		

Table of Contents

Specification	01
Performance Characteristics	02
Outline Drawing	03
Connection Drawing(s)	04
Spare parts	05

Marks:

MODEL NUMBER:	5KS326XAA340D	Estimated Weight:	670 Lbs
Outline Drawing:	239C6001FR	Time Rating:	CONT
Connection Diagram:	GEM2034E-FIG7	Enclosure:	TEFC
Instruction Book:	GEI-56128	Encl Construction:	841
Design Code:	32BD3101A	Ambient Max(°C):	40
Type:	KS	Alt Ambient Max(°C):	--
Frame:	326TC	Insulation Class:	H
Phases:	3	NEMA Design:	B
Poles:	6	Nominal Efficiency:	93.0 %
Output Power:	30HP 22.2KW	Guaranteed Efficiency:	92.4 %
RPM:	1180	3/4 Load Efficiency:	93.4 %
Voltage:	460	KVA Code:	G
Hertz:	60	Max KVAR:	11.8
Amps - FL:	38.0	Power Factor:	79.5
Service Factor:	1.15	Bearing - DE:	6312ZC3
Alt Service Factor:	--	Bearing - ODE:	6312ZC3

Enclosure is Totally Enclosed Fan-Cooled

Stamped Nameplate Notes:

IEEE-STD-841-2009

DE BRG 60BC03JP30, ODE BRG 60BC03JP30

STAMP NP249A5564P051 AS BELOW:

MODEL:5KS326XAA340D S/N: XXX

CSA CERTIFIED CSA09.2216219 FOR EX NA IIC 200 C GC

CL 1 ZONE2 AEX NA IIC 200C;CL 1 DIV2 GRP ABCD 200C

IN -25C <= AMB <= 40C, 1.0 SF ON SINE-WAVE PWR

SURF TEMP 230C AT 1.15SF ON SINE-WAVE PWR

OR 200C VT OR 230C CT OR 200C CHP PWM CONTROL

ALTERNATE RATING FOR PWM CONTROL 1.0SF 40C AMB

VT 0-60 HZ, CT 4-60 HZ, CHP 60-90 HZ.



Additional Information:

6P - T EXTN
PAINTED FRAME ID & SHAFT,
FAN COVER INSIDE & ODE E/S OUTSIDE
C FACE ON DE
346 CU IN - 3.00" NPT
INPRO SEAL BOTH ENDS
OIL RESISTANT SLEEVING ON LEADS
.0015" TIR SHAFT RUNOUT
ROUTINE TEST REPORT AND 5 POINT VIBRATION TEST
REPORT INCLUDED IN C/B
COPPER WASHER UNDER HEADS OF BEARING CAP BOLTS,
APPLY TITE-SEAL (A50CD427A) ON BEARING CAP SCREWS,
RABBETS AND PLUG THREADS.
GROUND PAD
F1 MOUNTING



Performance Characteristics

1st Winding 1st Connection

Design: 32BD3101A

Marks:

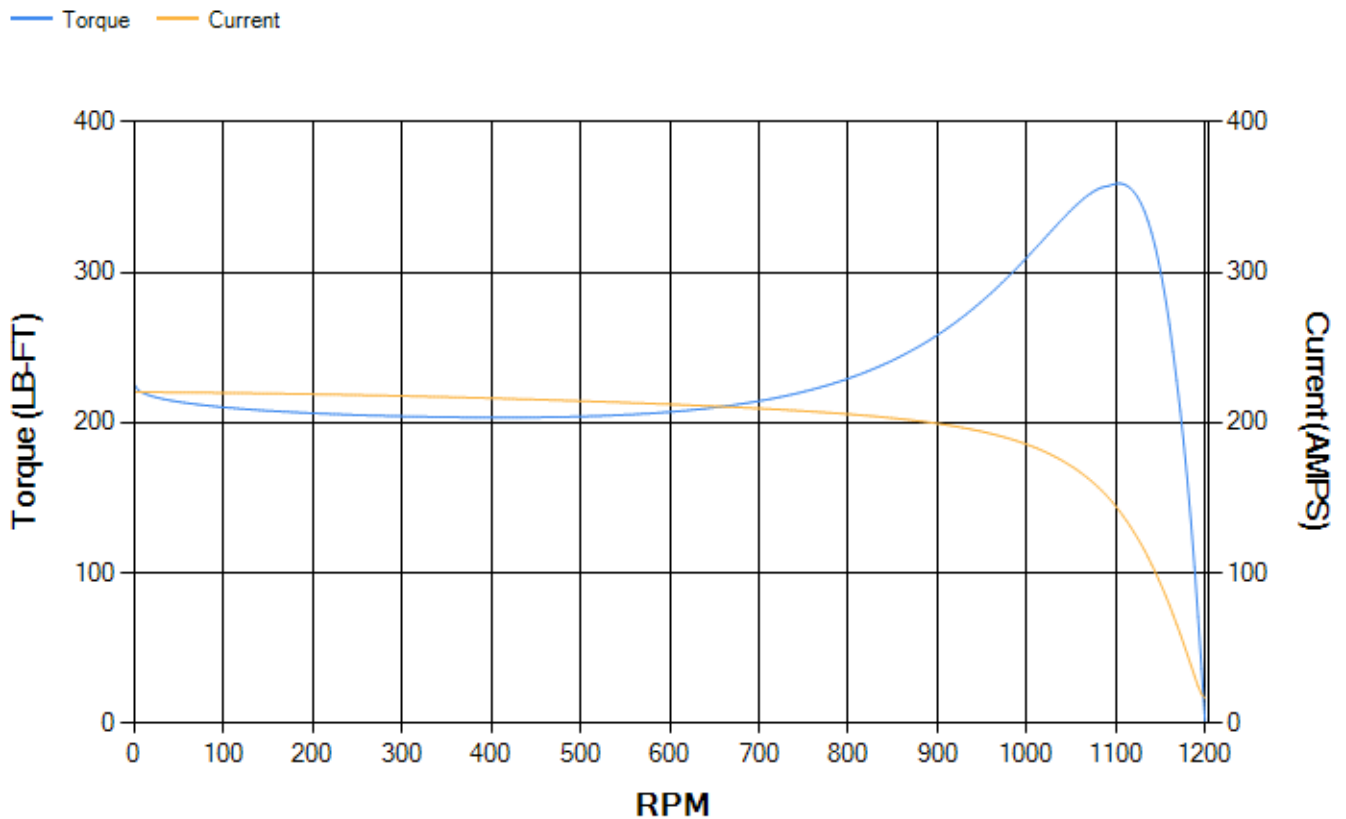
LOAD %	125.0	115.0	100.0	75.0	50.0	25.0	0.0
% EFF	91.92	92.34	93.07	93.39	93.11	90.08	0.00
% PF	81.4	80.8	79.28	74.23	63.47	41.41	3.84
AMPS	46.91	43.28	38.03	30.38	23.76	18.82	16.52

TORQ(FL)#FT	133.7	TORQ(LR)%FL	168.41	TORQ(BD)%FL	266.34
AMPS(LR)	220.35	PF AT START	0.34		

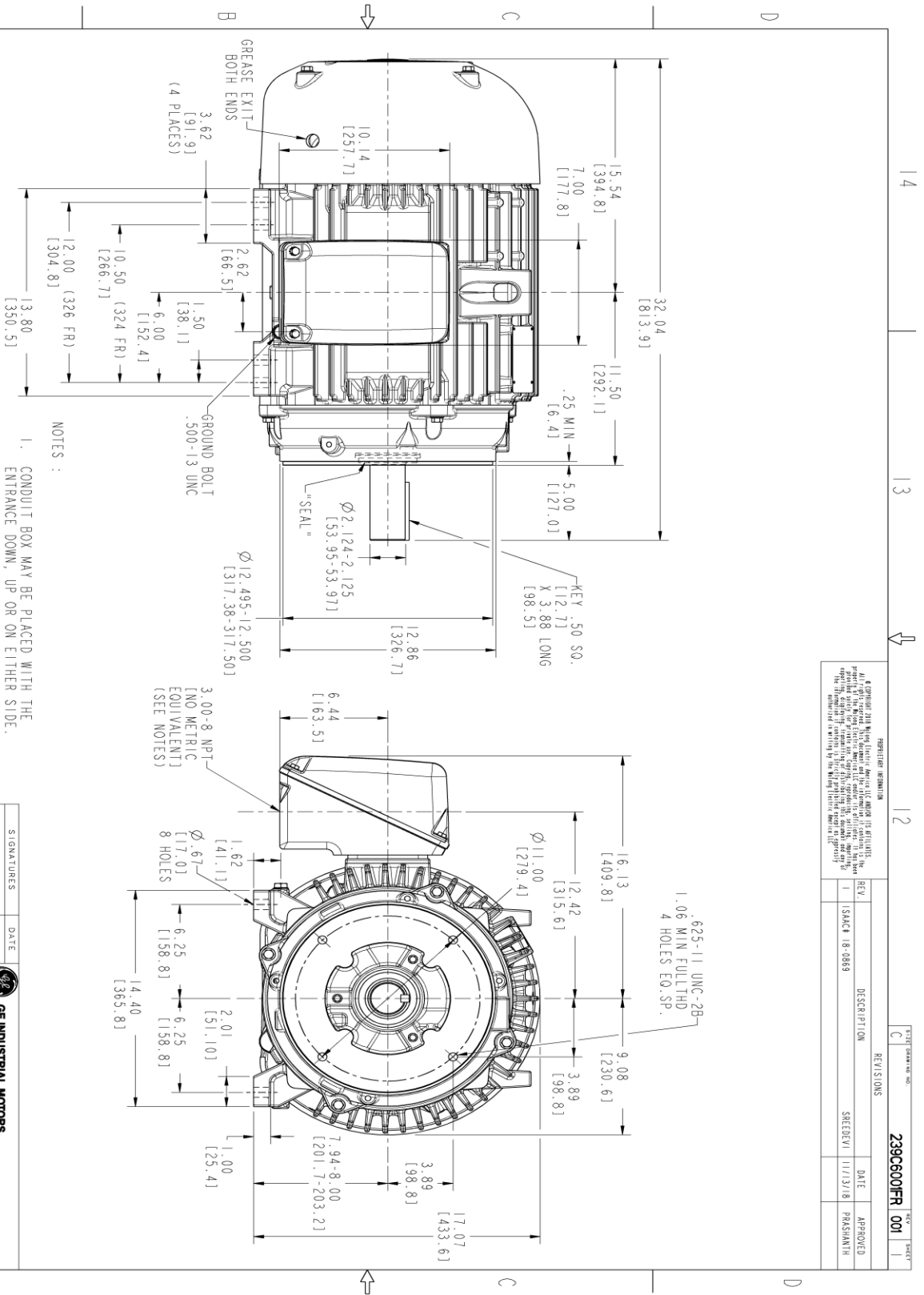
This motor is capable of two cold or one hot start with a maximum connected load inertia of 2199 Lb-Ft Sq (92.58 Kg-meter Sq) at 100% voltage, where the load torque varies with the square of the speed. Acceleration time with maximum inertia and the above load type is 45 seconds. Safe stall time at 100% voltage is 94 seconds cold, 54 seconds hot. Rotor inertia is 9.29 Lb-Ft Sq (0.39 Kg-meter Sq).

Open Circuit A-C:	0.317	Short Circuit D-C:	0.017
Short Circuit A-C:	0.019	X/R Ratio:	6.337
Stator Slots:	54	Rotor Slots:	40

Speed Torque Current Curve (First Connection, First Speed)



Marks:



PROHIBITED INFORMATION

It is prohibited to release this information to any person who is not authorized to receive it. If you are not an authorized recipient, you are notified that disclosing, copying, distributing, taking action on, or taking any action in reliance on the contents of this information is strictly prohibited. The information contained herein is the property of GE Industrial Motors and is confidential. It is not to be released, copied, or used in any way without the express written permission of GE Industrial Motors.

REV.	DESCRIPTION	DATE	APPROVED
1	ISSUE	11/13/18	PRASHANTH

239C6001FR 001

NOTES :

1. CONDUIT BOX MAY BE PLACED WITH THE ENTRANCE DOWN, UP OR ON EITHER SIDE.
2. F-1 ASM AS SHOWN.
3. F-2 ASM HAS CONDUIT BOX ON OPPOSITE SIDE.
4. BRACKETED DIMENSIONS ARE METRIC (MILLIMETERS)
5. TOLERANCE ON PERMISSIBLE SHAFT EXTENSION RUNOUT IS .0015 T.I.R.



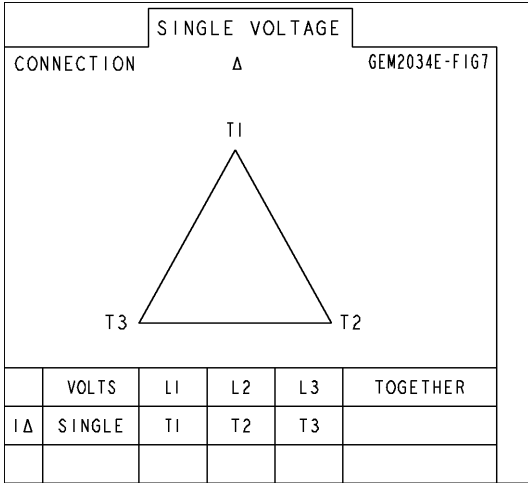
SIGNATURES	DATE	TITLE
DESIGN	06/28/15	DESIGNER
CHECKED	06/28/15	CHECKER
DATE	06/28/15	DATE
SCALE	0.250	SCALE
REV	001	REV

GE INDUSTRIAL MOTORS
A WOLONG COMPANY

OUTLINE
324/326 TC TFC XSD 841
346 CU IN CONDUIT BOX
239C6001FR 001

Marks:

Connection Diagram
GEM2034E-FIG7



End shield Assembly		
Part Description	DE Side Part#	ODE Side Part#
End Shield	115E4203AA1	115E4200LA1
Bearing	235A2509AS01	235A2509AS01
Slinger/Inproseal	235A4575GS2	235A4575GS2

Fan & Fan Cover Assembly	
Part Description	Part#
Fan	159C7000G01
Fan Cover	128D6800AA1

Conduit & Accessories Box Assembly	
Part Description	Part#
Conduit Box	149C4429AA2

Mechanical Accessories	
Part Description	Part#
Brake	
Tachometer	

