



GE INDUSTRIAL MOTORS
a **WOLONG** company

Product Technical Information

February 13, 2021

Data shown is for the current revision model #. Ensure your nameplate model # matches.

Model Number:	5KS449SAA1009D3
Catalog Number:	M9399
Instruction Manual:	GEI-56128
Connection Diagram:	GEM2034E-FIG20
Outline Drawing:	239C6800ARK

Accessory Connection Diagrams

Bearing Thermocouple:	None	Heater:	None
RTD:	None	Thermistor:	None
Thermostat:	None	Winding Thermocouple:	None
Bearing RTD:	None		

Table of Contents

Specification	01
Performance Characteristics	02
Outline Drawing	03
Connection Drawing(s)	04
Spare parts	05

Marks:

MODEL NUMBER: 5KS449SAA1009D3
Outline Drawing: 239C6800ARK
Connection Diagram: GEM2034E-FIG20
Instruction Book: GEI-56128
Design Code: 49BD0194B
Type: KS
Frame: 449TS
Phases: 3
Poles: 2
Output Power: 300HP 222KW
RPM: 3580
Voltage: 575
Hertz: 60
Amps - FL: 255.0
Service Factor: 1.15
Alt Service Factor: --

Estimated Weight: 2820 Lbs
Time Rating: CONT
Enclosure: TEFC
Encl Construction: 841
Ambient Max(°C): 40
Alt Ambient Max(°C): --
Insulation Class: H
NEMA Design: B
Nominal Efficiency: 95.8 %
Guaranteed Efficiency: 95.4 %
3/4 Load Efficiency: --
KVA Code: G
Max KVAR: 49.2
Power Factor: 92.0
Bearing - DE: 6314ZC3
Bearing - ODE: 6314ZC3

Enclosure is Totally Enclosed Fan-Cooled

Stamped Nameplate Notes:

FOR DIRECT COUPLED LOAD ONLY
 DE BRG 70BC03JP30, ODE BRG 70BC03JP30
 ROT CCW FACING ODE LEAD/PH SEQ 3-2-1/1-2-3
 STAMP NP249A5564P051 AS BELOW:
 MODEL:5KS449SAA1009D3 S/N: XXX
 CSA CERTIFIED CSA09.2216219 FOR EX NA IIC 200 C GC
 CL 1 ZONE2 AEX NA IIC 200C;CL 1 DIV2 GRP ABCD 200C
 IN -40C <= AMB <= 40C, 1.0 SF ON SINE-WAVE PWR
 SURF TEMP ---C AT 1.15SF ON SINE-WAVE PWR
 OR ---C VT OR ---C CT OR ---C CHP PWM CONTROL
 ALTERNATE RATING FOR PWM CONTROL 1.0SF 40C AMB
 VT --- HZ, CT --- HZ, CHP --- HZ.
 EXCEPTIONS TO IEEE-STD-841-2009:
 SOUND POWER 94 DBA



Additional Information:

2P - TS EXTN - SPLIT LEAD
PAINTED FRAME ID & SHAFT,
FAN COVER INSIDE & ODE E/S OUTSIDE
C/BOX 1260 CU IN - 2(4.00" NPT)
C/B GRD PLATE
SLINGER BOTH ENDS
OIL RESISTANT SLEEVING ON LEADS
.0015" TIR SHAFT RUNOUT
ROUTINE TEST REPORT AND 5 POINT VIBRATION TEST
REPORT INCLUDED IN C/B
GROUND PAD
F1 MOUNTING



Performance Characteristics

1st Winding 1st Connection

Design: 49BD0194B

Marks:

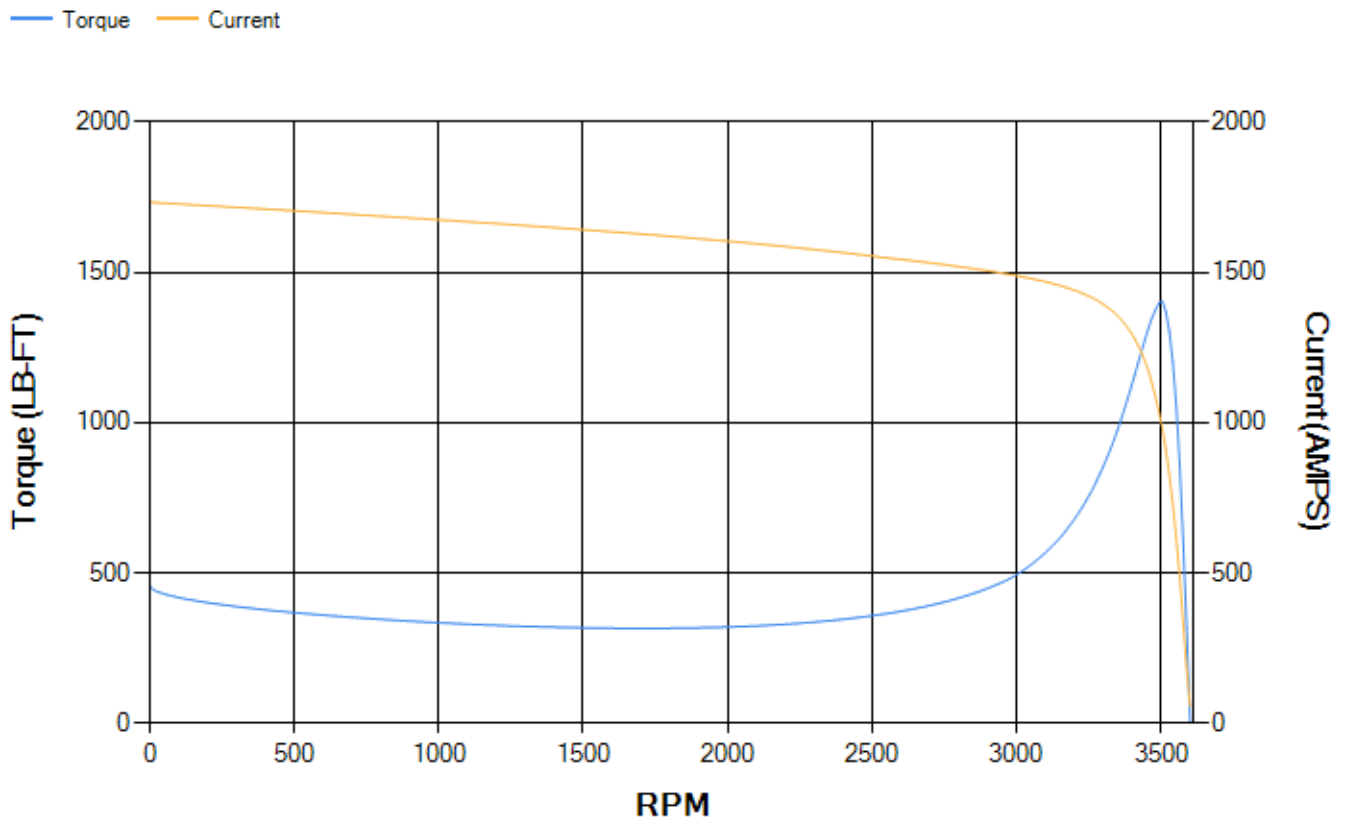
LOAD %	125.0	115.0	100.0	75.0	50.0	25.0	0.0
% EFF	95.7	95.89	96.34	96.38	96.19	94.45	0.00
% PF	92.28	92.36	92.24	91.06	86.93	71.33	5.09
AMPS	317.95	291.67	252.79	191.98	134.32	83.35	54.94

TORQ(FL)#FT	440.03	TORQ(LR)%FL	104.14	TORQ(BD)%FL	319.31
AMPS(LR)	1733.4	PF AT START	0.18		

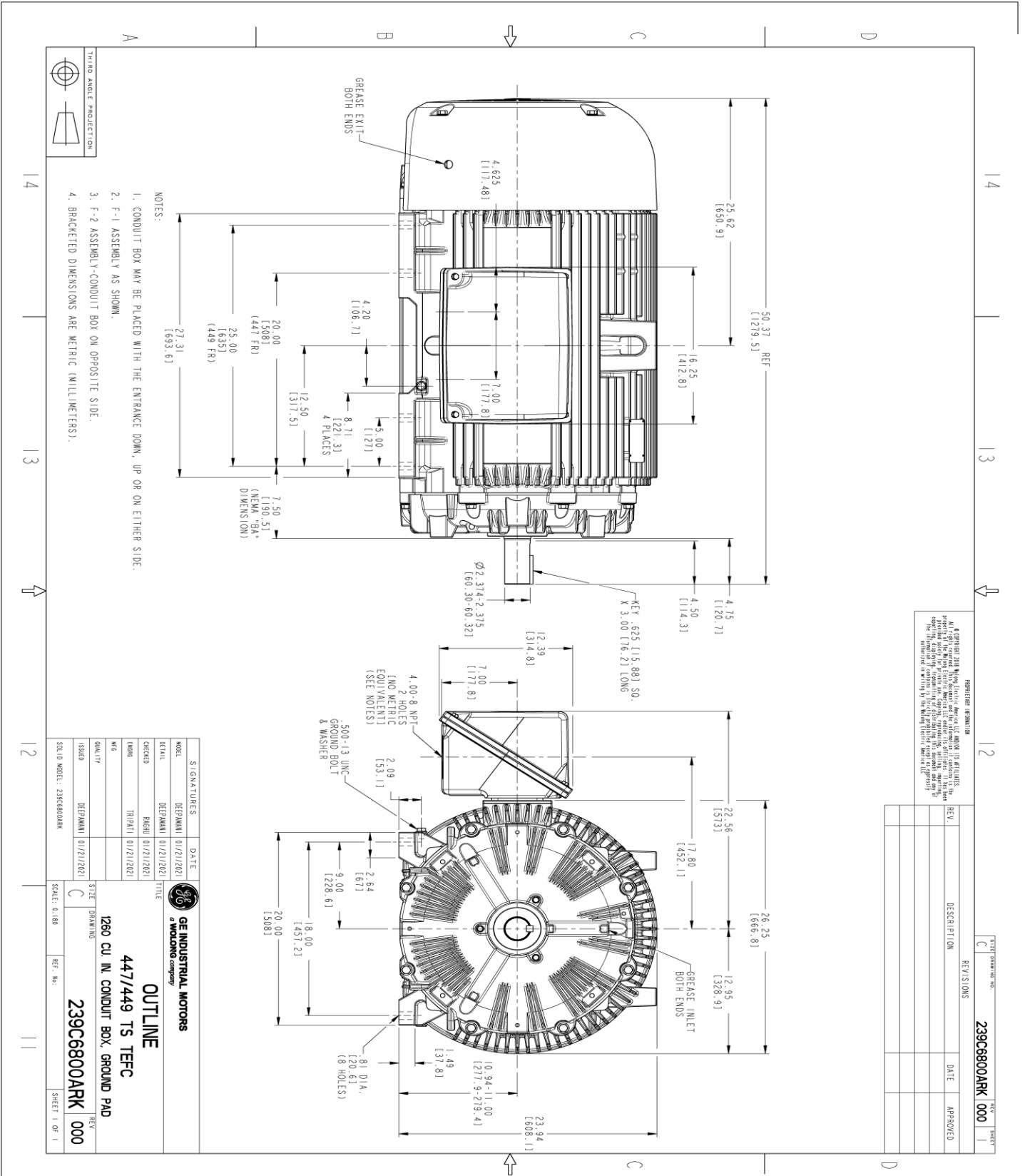
This motor is capable of two cold or one hot start with a maximum connected load inertia of 697 Lb-Ft Sq (29.34 Kg-meter Sq)at 100% voltage, where the load torque varies with the square of the speed. Acceleration time with maximum inertia and the above load type is 30 seconds. Safe stall time at 100% voltage is 79 seconds cold, 36 seconds hot. Rotor inertia is 50.39 Lb-Ft Sq (2.12 Kg-meter Sq).

Open Circuit A-C:	2.142	Short Circuit D-C:	0.036
Short Circuit A-C:	0.071	X/R Ratio:	13.421
Stator Slots:	48	Rotor Slots:	38

Speed Torque Current Curve (First Connection, First Speed)



Marks:



PROHIBITED INFORMATION
 All rights reserved. This document is the property of GE Industrial Motors. It contains confidential information and is intended for the use of the individual named in the title. It is not to be distributed, copied, or used in any way without the express written permission of GE Industrial Motors. The information contained herein is the property of GE Industrial Motors.

REV.	DESCRIPTION	DATE	APPROVED

- NOTES:
1. CONDUIT BOX MAY BE PLACED WITH THE ENTRANCE DOWN, UP OR ON EITHER SIDE.
 2. F-1 ASSEMBLY AS SHOWN.
 3. F-2 ASSEMBLY CONDUIT BOX ON OPPOSITE SIDE.
 4. BRACKETED DIMENSIONS ARE METRIC (MILLIMETERS).



SIGNATURES	DATE	TITLE
MODEL: DEPMANN 01/21/2021		
REVISED: DEPMANN 01/21/2021		
CHECKED: BAGHI 01/21/2021		
DRAWN: TRINATI 01/21/2021		
ISSUED: DEPMANN 01/21/2021		
SCALE: 0.180		

GE INDUSTRIAL MOTORS
 a WOLONG company

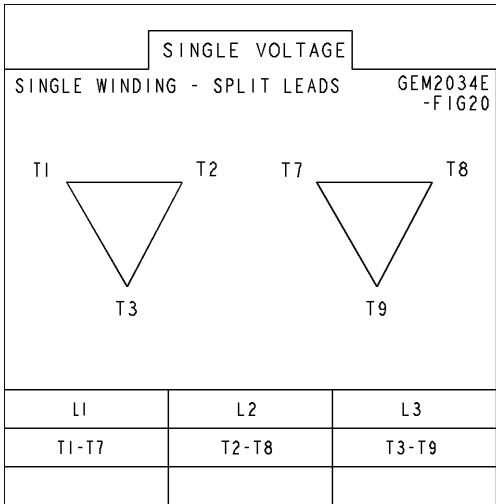
OUTLINE
 447/449 TS TEFC
 1260 CU IN. CONDUIT BOX, GROUND PAD

239C6800ARK 000

REV: 000
 SHEET 1 OF 1

Marks:

Connection Diagram
GEM2034E-FIG20



End shield Assembly		
Part Description	DE Side Part#	ODE Side Part#
End Shield	115E4354AA1	115E4354LL1
Bearing	235A2516AC01	235A2516AC01
Slinger/Inproseal	149C4399G05	149C4399G05

Fan & Fan Cover Assembly	
Part Description	Part#
Fan	149C4287AA2
Fan Cover	128D6841AC1

Conduit & Accessories Box Assembly	
Part Description	Part#
Conduit Box	179B9058G03

Mechanical Accessories	
Part Description	Part#
Brake	
Tachometer	

