



GE INDUSTRIAL MOTORS
a **WOLONG** company

Product Technical Information

June 25, 2020

Data shown is for the current revision model #. Ensure your nameplate model # matches.

Model Number:	5KS326XAA308D7
Catalog Number:	M9448
Instruction Manual:	GEI-56128
Connection Diagram:	GEM2034E-FIG7
Outline Drawing:	239C6000RJ

Accessory Connection Diagrams

Bearing Thermocouple:	None	Heater:	None
RTD:	None	Thermistor:	None
Thermostat:	None	Winding Thermocouple:	None
Bearing RTD:	None		

Table of Contents

Specification	01
Performance Characteristics	02
Outline Drawing	03
Connection Drawing(s)	04
Spare parts	05

Marks:

MODEL NUMBER: 5KS326XAA308D7
Outline Drawing: 239C6000RJ
Connection Diagram: GEM2034E-FIG7
Instruction Book: GEI-56128
Design Code: 32BD3101A
Type: KS
Frame: 326T
Phases: 3
Poles: 6
Output Power: 30HP 22.2KW
RPM: 1180
Voltage: 460
Hertz: 60
Amps - FL: 38.0
Service Factor: 1.15
Alt Service Factor: --

Estimated Weight: 670 Lbs
Time Rating: CONT
Enclosure: TEFC
Encl Construction: 841
Ambient Max(°C): 40
Alt Ambient Max(°C): --
Insulation Class: H
NEMA Design: B
Nominal Efficiency: 93.0 %
Guaranteed Efficiency: 92.4 %
3/4 Load Efficiency: 93.4 %
KVA Code: G
Max KVAR: 11.8
Power Factor: 79.5
Bearing - DE: 6312ZC3
Bearing - ODE: 6312ZC3

Enclosure is Totally Enclosed Fan-Cooled

Stamped Nameplate Notes:

IEEE-STD-841-2009
 DE BRG 60BC03JP30, ODE BRG 60BC03JP30
 STAMP NP249A5564P051 AS BELOW:
 MODEL:5KS326XAA308D7 S/N: XXX
 CSA CERTIFIED CSA09.2216219 FOR EX NA IIC 200 C GC
 CL 1 ZONE2 AEX NA IIC 200C;CL 1 DIV2 GRP ABCD 200C
 IN -25C <= AMB <= 40C, 1.0 SF ON SINE-WAVE PWR
 SURF TEMP 230C AT 1.15SF ON SINE-WAVE PWR
 OR 200C VT OR 230C CT OR 200C CHP PWM CONTROL
 ALTERNATE RATING FOR PWM CONTROL 1.0SF 40C AMB
 VT 0-60 HZ, CT 4-60 HZ, CHP 60-90 HZ.



Additional Information:

6P - T EXTN
PAINTED FRAME ID & SHAFT,
FAN COVER INSIDE & ODE E/S OUTSIDE
346 CU IN - 3.00" NPT
INPRO SEAL BOTH ENDS
OIL RESISTANT SLEEVING ON LEADS
.0015" TIR SHAFT RUNOUT
ROUTINE TEST REPORT AND 5 POINT VIBRATION TEST
REPORT INCLUDED IN C/B
COPPER WASHER UNDER HEADS OF BEARING CAP BOLTS,
APPLY TITE-SEAL (A50CD427A) ON BEARING CAP SCREWS,
RABBETS AND PLUG THREADS.
GROUND PAD
F1 MOUNTING



Performance Characteristics

1st Winding 1st Connection

Design: 32BD3101A

Marks:

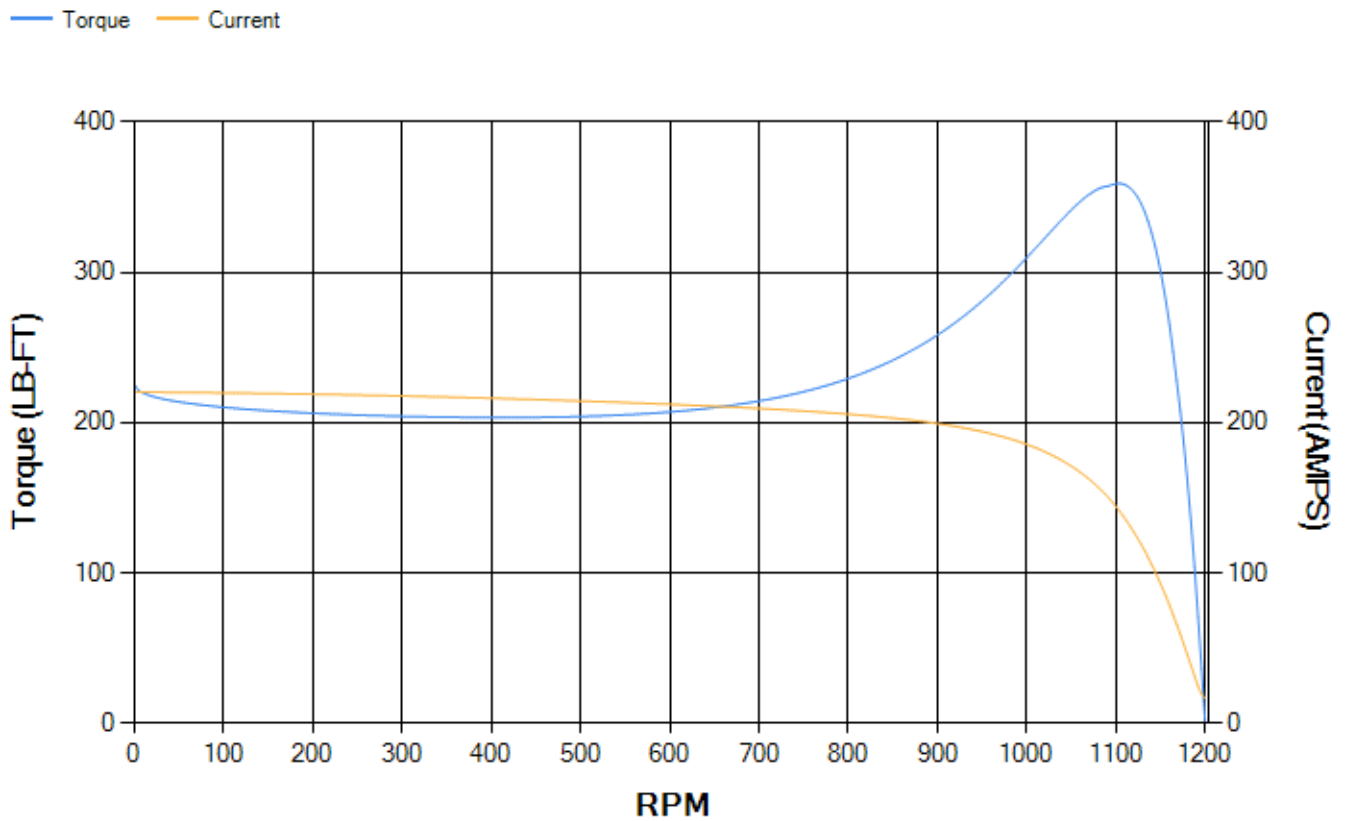
LOAD %	125.0	115.0	100.0	75.0	50.0	25.0	0.0
% EFF	91.92	92.34	93.07	93.39	93.11	90.08	0.00
% PF	81.4	80.8	79.28	74.23	63.47	41.41	3.84
AMPS	46.91	43.28	38.03	30.38	23.76	18.82	16.52

TORQ(FL)#FT	133.7	TORQ(LR)%FL	168.41	TORQ(BD)%FL	266.34
AMPS(LR)	220.35	PF AT START	0.34		

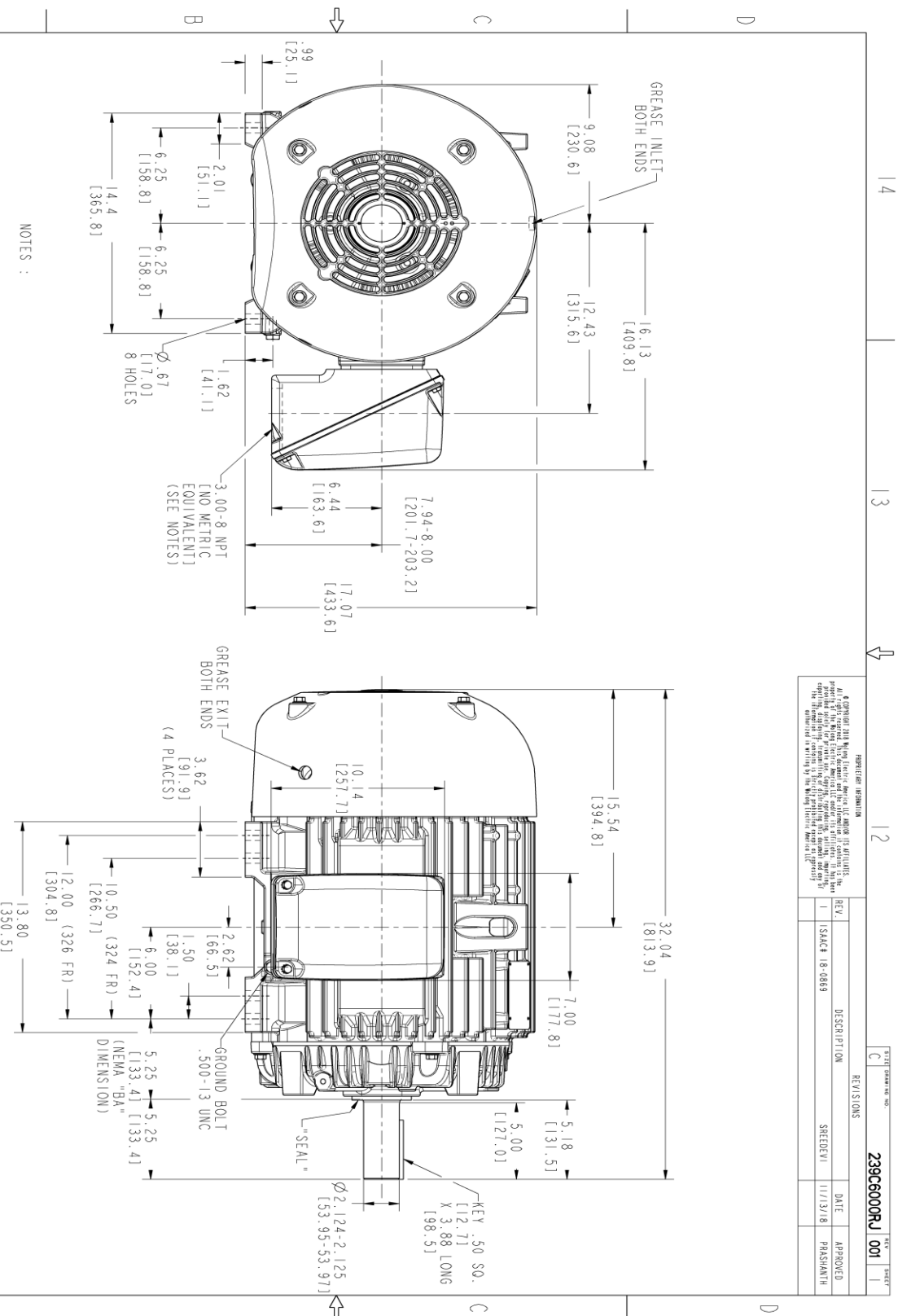
This motor is capable of two cold or one hot start with a maximum connected load inertia of 2199 Lb-Ft Sq (92.58 Kg-meter Sq) at 100% voltage, where the load torque varies with the square of the speed. Acceleration time with maximum inertia and the above load type is 45 seconds. Safe stall time at 100% voltage is 94 seconds cold, 54 seconds hot. Rotor inertia is 9.29 Lb-Ft Sq (0.39 Kg-meter Sq).

Open Circuit A-C:	0.317	Short Circuit D-C:	0.017
Short Circuit A-C:	0.019	X/R Ratio:	6.337
Stator Slots:	54	Rotor Slots:	40

Speed Torque Current Curve (First Connection, First Speed)



Marks:



NOTES :

1. CONDUIT BOX MAY BE PLACED WITH THE ENTRANCE DOWN, UP OR ON EITHER SIDE.
2. F-1 ASM AS SHOWN.
3. BRACKETED DIMENSIONS ARE METRIC (MILLIMETERS).
4. TOLERANCE ON PERMISSIBLE SHAFT EXTENSION RUNOUT IS .0015 T.I.R.

REVISION INFORMATION 1. GE 2019 2018 Motor Electric America LLC Model 5KS326XAA308D7 2. GE 2019 2018 Motor Electric America LLC Model 5KS326XAA308D7 3. GE 2019 2018 Motor Electric America LLC Model 5KS326XAA308D7 4. GE 2019 2018 Motor Electric America LLC Model 5KS326XAA308D7 5. GE 2019 2018 Motor Electric America LLC Model 5KS326XAA308D7 6. GE 2019 2018 Motor Electric America LLC Model 5KS326XAA308D7 7. GE 2019 2018 Motor Electric America LLC Model 5KS326XAA308D7 8. GE 2019 2018 Motor Electric America LLC Model 5KS326XAA308D7 9. GE 2019 2018 Motor Electric America LLC Model 5KS326XAA308D7 10. GE 2019 2018 Motor Electric America LLC Model 5KS326XAA308D7			
REV.	DESCRIPTION	DATE	APPROVED
1	ISSUE 18-0869	11/13/18	PRASHANTH
REVISED			

SIGNATURES MODEL: 5KS326XAA308D7 CHECKED: MATHUK 06/19/15 DATE: 06/19/15 DESIGNED: VIJAY 06/19/15 DRAWN: VIJAY 06/19/15 ISSUED: TEJASVI 06/19/15 SCALE: 0.250 REF. NO: 239C6000RJ		GE INDUSTRIAL MOTORS a WOLSKONG company TITLE: OUTLINE 324/326 T TEFC XSD 841 346 CU IN CONDUIT BOX 239C6000RJ SHEET 1 OF 1	
---	--	--	--



Marks:

Connection Diagram
GEM2034E-FIG7



End shield Assembly		
Part Description	DE Side Part#	ODE Side Part#
End Shield	115E4200AA1	115E4200LA1
Bearing	235A2509AS01	235A2509AS01
Slinger/Inproseal	235A4575GS2	235A4575GS2

Fan & Fan Cover Assembly	
Part Description	Part#
Fan	159C7000G01
Fan Cover	128D6800AA1

Conduit & Accessories Box Assembly	
Part Description	Part#
Conduit Box	149C4429AA2

Mechanical Accessories	
Part Description	Part#
Brake	
Tachometer	

