



**GE INDUSTRIAL MOTORS**  
a **WOLONG** company

# Product Technical Information

June 25, 2020

Data shown is for the current revision model #. Ensure your nameplate model # matches.

<b>Model Number:</b>	<b>5KS324XAA118D11</b>
<b>Catalog Number:</b>	<b>M9450</b>
<b>Instruction Manual:</b>	GEI-56128
<b>Connection Diagram:</b>	GEM2034E-FIG7
<b>Outline Drawing:</b>	239C6000RK

## Accessory Connection Diagrams

<b>Bearing Thermocouple:</b>	None	<b>Heater:</b>	None
<b>RTD:</b>	None	<b>Thermistor:</b>	None
<b>Thermostat:</b>	None	<b>Winding Thermocouple:</b>	None
<b>Bearing RTD:</b>	None		

## Table of Contents

Specification	01
Performance Characteristics	02
Outline Drawing	03
Connection Drawing(s)	04
Spare parts	05

Marks:

<b>MODEL NUMBER:</b>	<b>5KS324XAA118D11</b>	<b>Estimated Weight:</b>	640 Lbs
<b>Outline Drawing:</b>	239C6000RK	<b>Time Rating:</b>	CONT
<b>Connection Diagram:</b>	GEM2034E-FIG7	<b>Enclosure:</b>	TEFC
<b>Instruction Book:</b>	GEI-56128	<b>Encl Construction:</b>	841
<b>Design Code:</b>	32BD0182A	<b>Ambient Max(°C):</b>	40
<b>Type:</b>	KS	<b>Alt Ambient Max(°C):</b>	--
<b>Frame:</b>	324TS	<b>Insulation Class:</b>	H
<b>Phases:</b>	3	<b>NEMA Design:</b>	B
<b>Poles:</b>	2	<b>Nominal Efficiency:</b>	93.0 %
<b>Output Power:</b>	40HP 29.6KW	<b>Guaranteed Efficiency:</b>	92.4 %
<b>RPM:</b>	3570	<b>3/4 Load Efficiency:</b>	93.3 %
<b>Voltage:</b>	460	<b>KVA Code:</b>	G
<b>Hertz:</b>	60	<b>Max KVAR:</b>	13.5
<b>Amps - FL:</b>	47.6	<b>Power Factor:</b>	84.5
<b>Service Factor:</b>	1.15	<b>Bearing - DE:</b>	6312ZC3
<b>Alt Service Factor:</b>	--	<b>Bearing - ODE:</b>	6312ZC3

Enclosure is Totally Enclosed Fan-Cooled

---

Stamped Nameplate Notes:

IEEE-STD-841-2009

DE BRG 60BC03JP30, ODE BRG 60BC03JP30

STAMP NP249A5564P051 AS BELOW:

MODEL:5KS324XAA118D11 S/N: XXX

CSA CERTIFIED CSA09.2216219 FOR EX NA IIC 200 C GC

CL 1 ZONE2 AEX NA IIC 200C;CL 1 DIV2 GRP ABCD 200C

IN -25C <= AMB <= 40C, 1.0 SF ON SINE-WAVE PWR

SURF TEMP 215C AT 1.15SF ON SINE-WAVE PWR

OR 200C VT OR 230C CT OR 200C CHP PWM CONTROL

ALTERNATE RATING FOR PWM CONTROL 1.0SF 40C AMB

VT 0 - 60 HZ, CT 3-60 HZ, CHP 60-75 HZ.



**Additional Information:**

2P - TS EXTN  
PAINTED FRAME ID & SHAFT,  
FAN COVER INSIDE & ODE E/S OUTSIDE  
346 CU IN - 3.00" NPT  
INPRO SEAL BOTH ENDS  
OIL RESISTANT SLEEVING ON LEADS  
.0015" TIR SHAFT RUNOUT  
ROUTINE TEST REPORT AND 5 POINT VIBRATION TEST  
REPORT INCLUDED IN C/B  
COPPER WASHER UNDER HEADS OF BEARING CAP BOLTS,  
APPLY TITE-SEAL (A50CD427A) ON BEARING CAP SCREWS,  
RABBETS AND PLUG THREADS.  
GROUND PAD  
F1 MOUNTING



**Performance Characteristics**

1st Winding 1st Connection

**Design: 32BD0182A**

**Marks:**

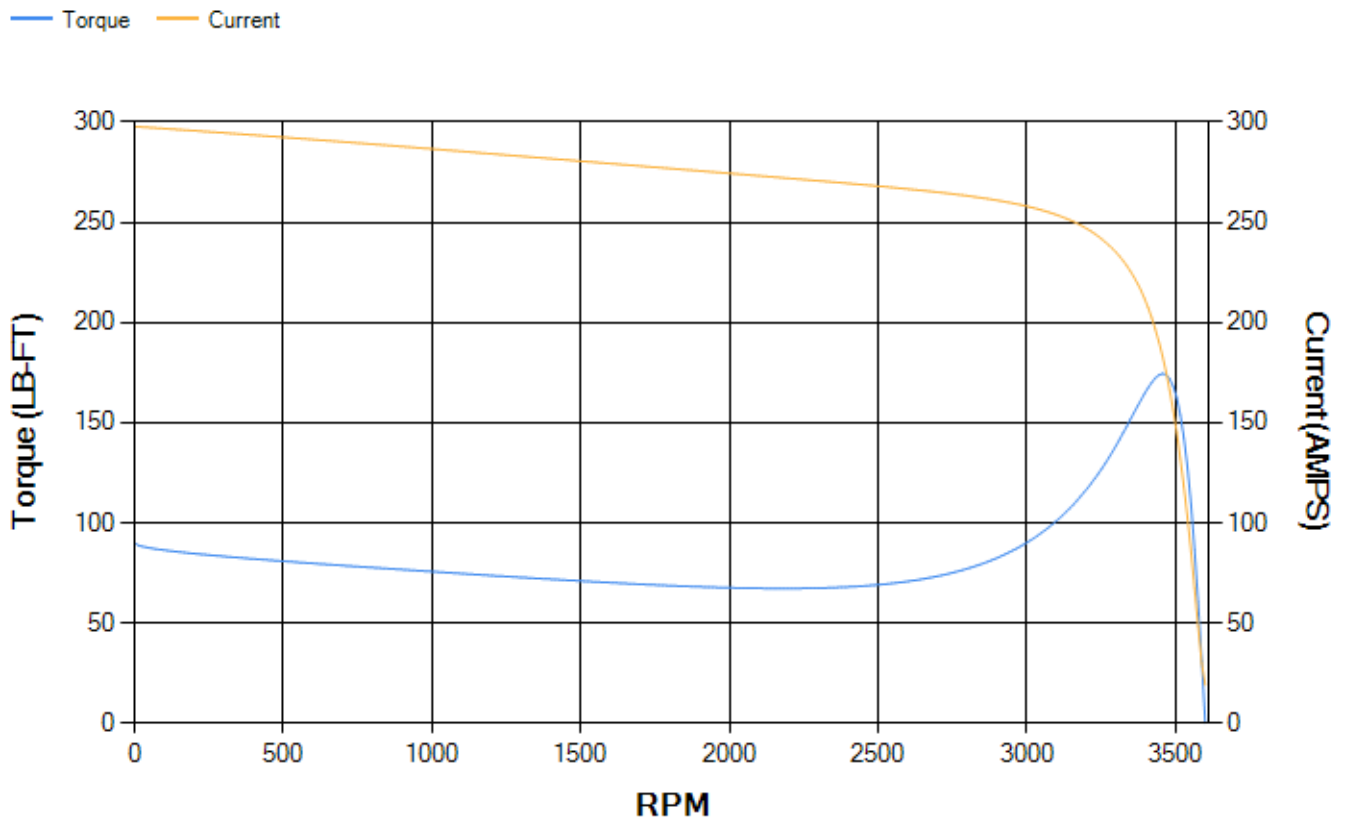
LOAD %	125.0	115.0	100.0	75.0	50.0	25.0	0.0
% EFF	93.04	93.22	93.6	93.32	92.3	87.88	0.00
% PF	86.42	85.81	84.4	79.9	70.02	47.9	5.92
AMPS	58.21	53.82	47.33	37.65	28.97	22.23	18.97

<b>TORQ(FL)#FT</b>	58.86	<b>TORQ(LR)%FL</b>	152.75	<b>TORQ(BD)%FL</b>	296.11
<b>AMPS(LR)</b>	297.84	<b>PF AT START</b>	0.29		

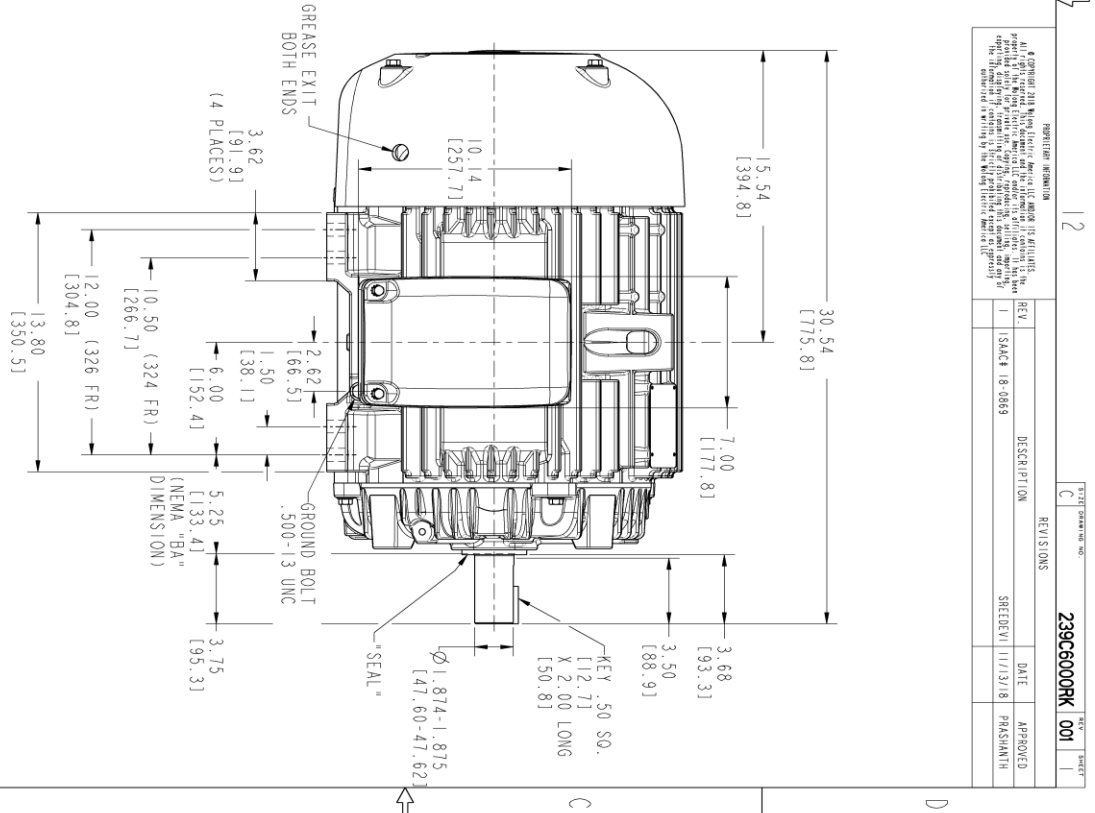
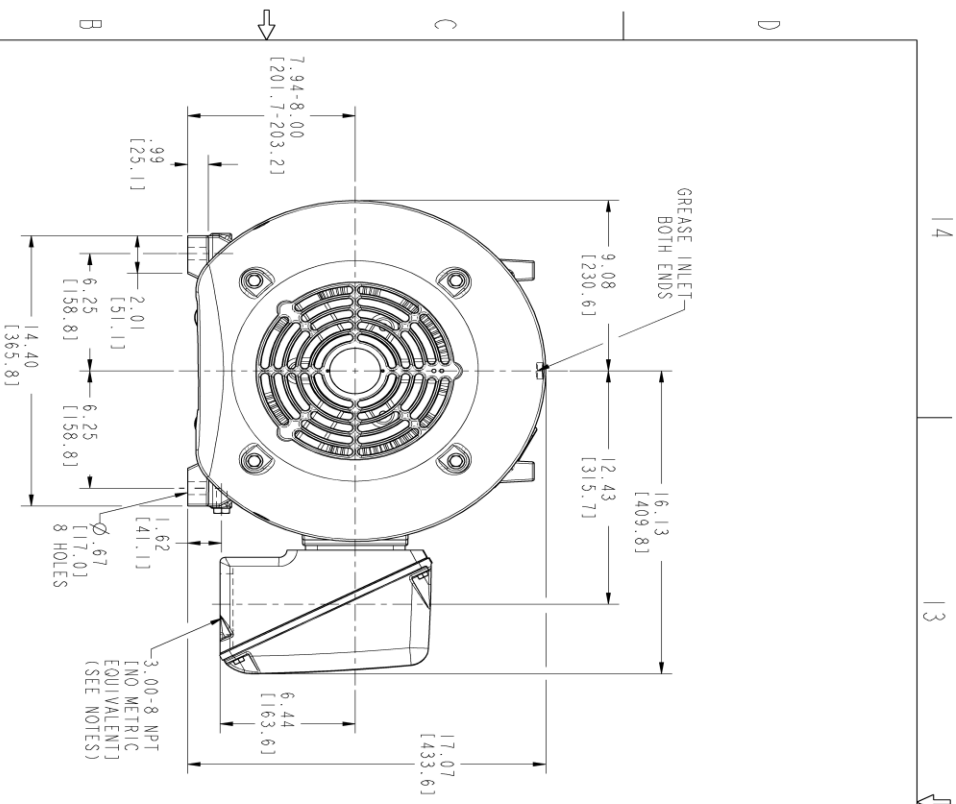
This motor is capable of two cold or one hot start with a maximum connected load inertia of 137 Lb-Ft Sq (5.77 Kg-meter Sq)at 100% voltage, where the load torque varies with the square of the speed. Acceleration time with maximum inertia and the above load type is 26 seconds. Safe stall time at 100% voltage is 53 seconds cold, 31 seconds hot. Rotor inertia is 3.47 Lb-Ft Sq (0.15 Kg-meter Sq).

<b>Open Circuit A-C:</b>	0.697	<b>Short Circuit D-C:</b>	0.019
<b>Short Circuit A-C:</b>	0.043	<b>X/R Ratio:</b>	7.152
<b>Stator Slots:</b>	48	<b>Rotor Slots:</b>	38

**Speed Torque Current Curve (First Connection, First Speed)**



Marks:



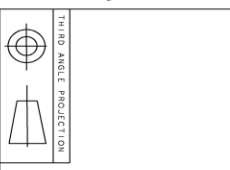
- NOTES :
1. CONDUIT BOX MAY BE PLACED WITH THE ENTRANCE DOWN, UP OR ON EITHER SIDE.
  2. F-1 ASM AS SHOWN.
  3. BRACKETED DIMENSIONS ARE METRIC (MILLIMETERS).
  4. TOLERANCE ON PERMISSIBLE SHAFT EXTENSION RUNOUT IS .0015 T.I.R.

REGISTRATION INFORMATION

© COPYRIGHT 2018 GE Industrial America LLC AND/OR ITS AFFILIATES. ALL RIGHTS RESERVED. THIS DOCUMENT IS UNCLASSIFIED AND IS NOT A CONTROLLED DOCUMENT. IT IS THE PROPERTY OF GE INDUSTRIAL AMERICA LLC AND/OR ITS AFFILIATES. IT IS TO BE USED ONLY FOR THE PROJECT AND/OR PRODUCT SPECIFICALLY IDENTIFIED HEREIN. IT IS TO BE RETURNED TO GE INDUSTRIAL AMERICA LLC AND/OR ITS AFFILIATES UPON COMPLETION OF THE PROJECT AND/OR PRODUCT SPECIFICALLY IDENTIFIED HEREIN. THE INFORMATION CONTAINED HEREIN IS THE PROPERTY OF GE INDUSTRIAL AMERICA LLC AND/OR ITS AFFILIATES.

REV.	DESCRIPTION	DATE	APPROVED
1	ISSUE 18-0869	11/13/18	PRASHANTH

239C6000RK 001



SIGNATURES	DATE	TITLE
MODEL: TEJASNI	06/19/15	<p><b>GE INDUSTRIAL MOTORS</b> a WOLONG company</p> <p><b>OUTLINE</b> 324/326 TS TFC XSD 841 346 CU IN CONDUIT BOX</p> <p><b>239C6000RK</b></p>
CHECKED: KARTHICK	06/19/15	
DESIGN: VENKAT	06/19/15	
DATE: 06/19/15		
ISSUED: TEJASNI	06/19/15	SIZE: DRAWING: C
SCALE: 0.250	REF. NO: 239C6000AK	REV: 001
SHEET 1 OF 1		

Marks:

**Connection Diagram**  
**GEM2034E-FIG7**



End shield Assembly		
Part Description	DE Side Part#	ODE Side Part#
End Shield	115E4200AA1	115E4200LA1
Bearing	235A2509AS01	235A2509AS01
Slinger/Inproseal	235A4575GS2	235A4575GS2

Fan & Fan Cover Assembly	
Part Description	Part#
Fan	159C6700G02
Fan Cover	128D6800AA1

Conduit & Accessories Box Assembly	
Part Description	Part#
Conduit Box	149C4429AA2

Mechanical Accessories	
Part Description	Part#
Brake	
Tachometer	

