



**GE INDUSTRIAL MOTORS**  
a **WOLONG** company

# Product Technical Information

August 14, 2021

Data shown is for the current revision model #. Ensure your nameplate model # matches.

<b>Model Number:</b>	<b>5KS324XAA208YQK</b>
<b>Catalog Number:</b>	<b>M9451</b>
<b>Instruction Manual:</b>	GEI-56128-SP
<b>Connection Diagram:</b>	GEM2034E-FIG7
<b>Outline Drawing:</b>	239C6000RJ

## Accessory Connection Diagrams

<b>Bearing Thermocouple:</b>	None	<b>Heater:</b>	None
<b>RTD:</b>	None	<b>Thermistor:</b>	None
<b>Thermostat:</b>	None	<b>Winding Thermocouple:</b>	None
<b>Bearing RTD:</b>	None		

## Table of Contents

Specification	01
Performance Characteristics	02
Outline Drawing	03
Connection Drawing(s)	04
Spare parts	05

Marks:

<b>MODEL NUMBER:</b>	<b>5KS324XAA208YQK</b>	<b>Estimated Weight:</b>	670 Lbs
<b>Outline Drawing:</b>	239C6000RJ	<b>Time Rating:</b>	CONT
<b>Connection Diagram:</b>	GEM2034E-FIG7	<b>Enclosure:</b>	TEFC
<b>Instruction Book:</b>	GEI-56128-SP	<b>Encl Construction:</b>	841
<b>Design Code:</b>	32BD1182A	<b>Ambient Max(°C):</b>	40
<b>Type:</b>	KS	<b>Alt Ambient Max(°C):</b>	--
<b>Frame:</b>	324T	<b>Insulation Class:</b>	H
<b>Phases:</b>	3	<b>NEMA Design:</b>	B
<b>Poles:</b>	4	<b>Nominal Efficiency:</b>	94.1 %
<b>Output Power:</b>	40HP 29.6KW	<b>Guaranteed Efficiency:</b>	93.6 %
<b>RPM:</b>	1780	<b>3/4 Load Efficiency:</b>	--
<b>Voltage:</b>	460	<b>KVA Code:</b>	G
<b>Hertz:</b>	60	<b>Max KVAR:</b>	15.2
<b>Amps - FL:</b>	49.7	<b>Power Factor:</b>	80.0
<b>Service Factor:</b>	1.15	<b>Bearing - DE:</b>	6312ZC3
<b>Alt Service Factor:</b>	--	<b>Bearing - ODE:</b>	6312ZC3

Enclosure is Totally Enclosed Fan-Cooled

---

Stamped Nameplate Notes:

IEEE-STD-841-2009

BALERO DE 60BC03JP30, BALERO ODE 60BC03JP30

STAMP NP249A5564P051 AS BELOW:

MODEL:5KS324XAA208YQK S/N: XXX

CSA CERTIFIED CSA09.2216219 FOR EX NA IIC 200 C GC

CL 1 ZONE2 AEX NA IIC 200C;CL 1 DIV2 GRP ABCD 200C

IN -25C <= AMB <= 40C, 1.0 SF ON SINE-WAVE PWR

SURF TEMP 230C AT 1.15SF ON SINE-WAVE PWR

OR 200 C VT OR 230 C CT OR 200 C CHP PWM CONTROL

ALTERNATE RATING FOR PWM CONTROL 1.0SF 40C AMB

VT 0-60 HZ, CT 3-60 HZ, CHP 60-90 HZ.

ESTANDAR DE REFERENCIA: NEMA-MG-1

ALTURA MAXIMA EN METROS: 1000 METROS

ANO DE MANUFACTURA: STAMP AS PER SAP

MASA: 304 KG

POSICION: HORIZONTAL

AMPERAJE/CORRIENTE DE ROTOR BLOQUEADO: 267.6 AMPS

TORQUE DE ROTOR BLOQUEADO: 260.7 N-M

TORQUE A PLENA CARGA: 160.1 N-M

MAXIMA VELOCIDAD DE OPERACION SEGURA: 2700 RPM

AMBIENTE MINIMO: -25 DEG C



**Additional Information:**

4P - T EXTN  
PAINTED FRAME ID & SHAFT,  
FAN COVER INSIDE & ODE E/S OUTSIDE  
346 CU IN - 3.00" NPT  
INPRO SEAL BOTH ENDS  
OIL RESISTANT SLEEVING ON LEADS  
.0015" TIR SHAFT RUNOUT  
ROUTINE TEST REPORT AND 5 POINT VIBRATION TEST  
REPORT INCLUDED IN C/B  
COPPER WASHER UNDER HEADS OF BEARING CAP BOLTS,  
APPLY TITE-SEAL (A50CD427A) ON BEARING CAP SCREWS,  
RABBETS AND PLUG THREADS.  
GROUND PAD  
F1 MOUNTING  
RETIE/RETIQ CERTIFIED MOTOR



**Performance Characteristics**

1st Winding 1st Connection

**Design: 32BD1182A**

**Marks:**

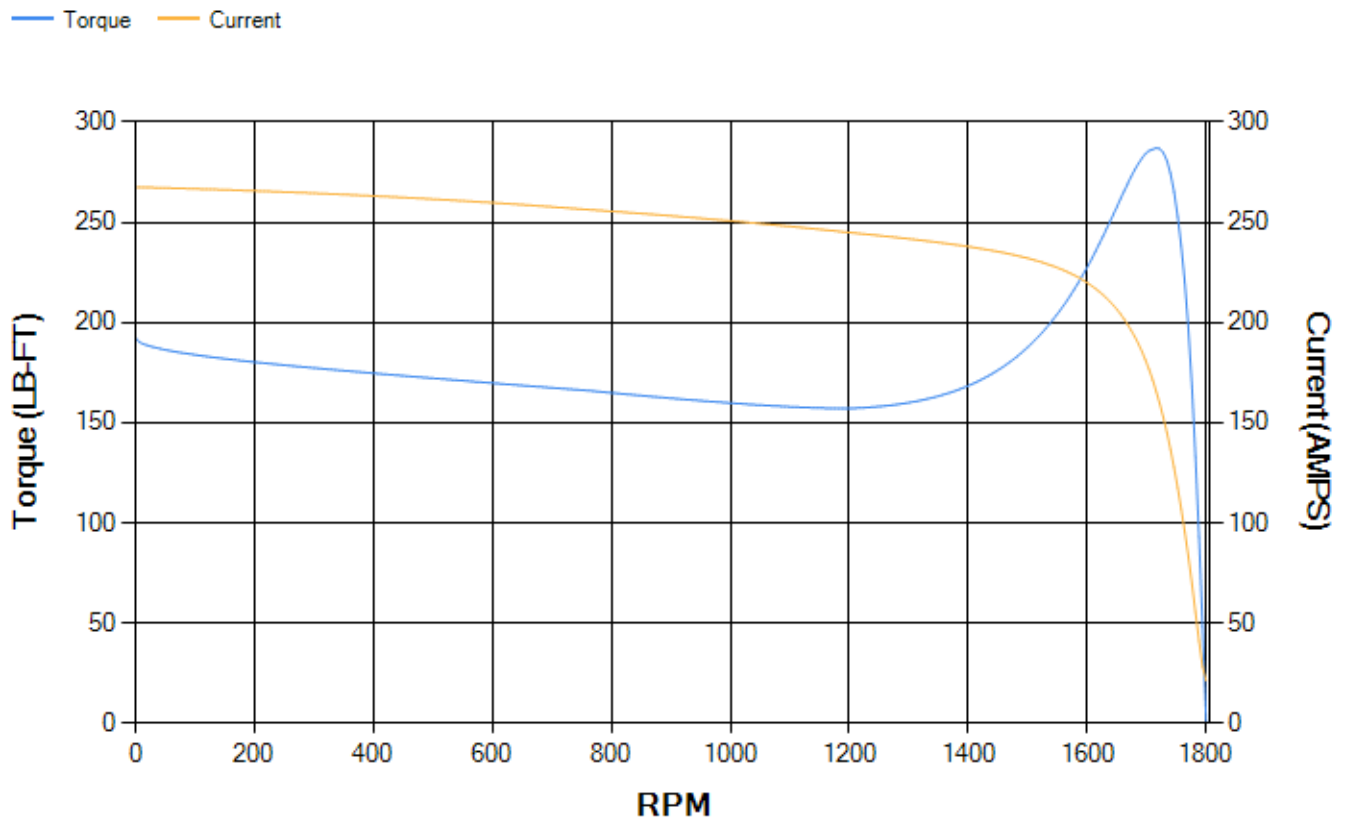
LOAD %	125.0	115.0	100.0	75.0	50.0	25.0	0.0
% EFF	93.44	93.73	94.29	94.38	93.95	91	0.00
% PF	82.18	81.61	80.15	75.28	64.7	42.44	3.55
AMPS	60.94	56.28	49.43	39.52	30.79	24.24	21.17

<b>TORQ(FL)#FT</b>	118.11	<b>TORQ(LR)%FL</b>	162.85	<b>TORQ(BD)%FL</b>	242.14
<b>AMPS(LR)</b>	267.59	<b>PF AT START</b>	0.33		

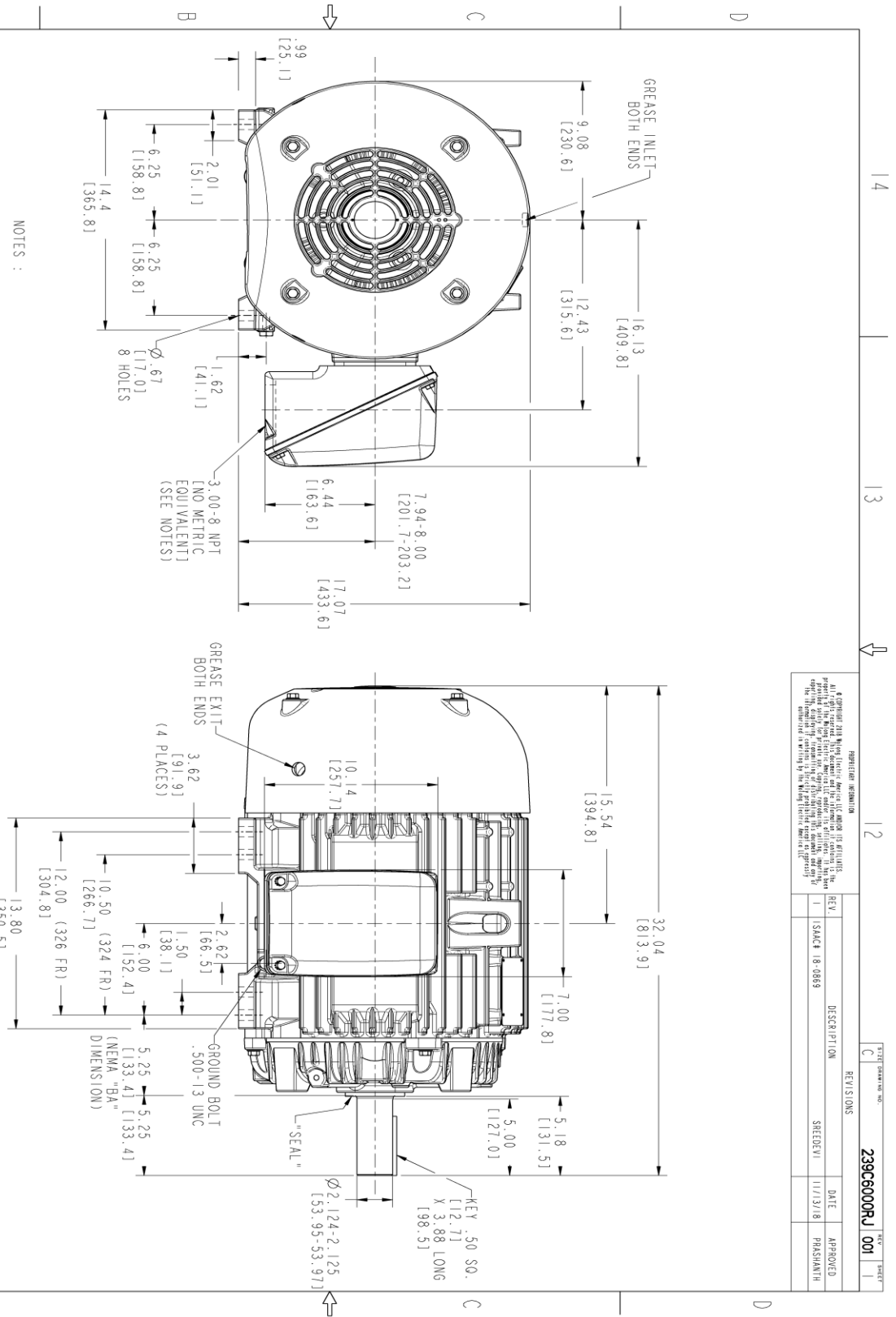
This motor is capable of two cold or one hot start with a maximum connected load inertia of 952 Lb-Ft Sq (40.08 Kg-meter Sq)at 100% voltage, where the load torque varies with the square of the speed. Acceleration time with maximum inertia and the above load type is 40 seconds. Safe stall time at 100% voltage is 88 seconds cold, 47 seconds hot. Rotor inertia is 6.94 Lb-Ft Sq (0.29 Kg-meter Sq).

<b>Open Circuit A-C:</b>	0.479	<b>Short Circuit D-C:</b>	0.022
<b>Short Circuit A-C:</b>	0.032	<b>X/R Ratio:</b>	8.428
<b>Stator Slots:</b>	48	<b>Rotor Slots:</b>	38

**Speed Torque Current Curve (First Connection, First Speed)**



Marks:



NOTES :

1. CONDUIT BOX MAY BE PLACED WITH THE ENTRANCE DOWN, UP OR ON EITHER SIDE.
2. F-1 ASM AS SHOWN.
3. BRACKETED DIMENSIONS ARE METRIC (MILLIMETERS).
4. TOLERANCE ON PERMISSIBLE SHAFT EXTENSION RUNOUT IS .0015 T.I.R.

REGISTERED INFORMATION

© Copyright 2018 GE Industrial Motors. All rights reserved. This drawing is the property of GE Industrial Motors. It is to be used for the manufacture of parts and assemblies for the motor and motor parts only. It is not to be used for any other purpose. The information contained herein is confidential and its disclosure to third parties is prohibited. The information contained herein is the property of GE Industrial Motors.

REV.	DESCRIPTION	DATE	APPROVED
1	ISACH 18-0869	11/13/18	PRASHANTH

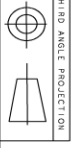
239C6000RJ 001

SIGNATURES	DATE	TITLE
TEJASNI	06/19/15	DESIGNER
TEJASNI	06/19/15	CHECKED
MARHUJ	06/19/15	DESIGN
VIJAY	06/19/15	ISSUED
TEJASNI	06/19/15	SCALE: 0.250

GE INDUSTRIAL MOTORS  
a WOLSKEL company

OUTLINE  
324/326 T TEFC XSD 841  
346 CU IN CONDUIT BOX

239C6000RJ  
SHEET 1 OF 1



Marks:

**Connection Diagram**  
**GEM2034E-FIG7**



End shield Assembly		
Part Description	DE Side Part#	ODE Side Part#
End Shield		
Bearing		
Slinger/Inproseal		

Fan & Fan Cover Assembly	
Part Description	Part#
Fan	
Fan Cover	

Conduit & Accessories Box Assembly	
Part Description	Part#
Conduit Box	

Mechanical Accessories	
Part Description	Part#
Brake	
Tachometer	

