



GE INDUSTRIAL MOTORS
a **WOLONG** company

Product Technical Information

June 25, 2020

Data shown is for the current revision model #. Ensure your nameplate model # matches.

Model Number:	5KS405XAA408D6
Catalog Number:	M9461
Instruction Manual:	GEI-56128
Connection Diagram:	GEM2034E-FIG7
Outline Drawing:	239C6400PZ

Accessory Connection Diagrams

Bearing Thermocouple:	None	Heater:	None
RTD:	None	Thermistor:	None
Thermostat:	None	Winding Thermocouple:	None
Bearing RTD:	None		

Table of Contents

Specification	01
Performance Characteristics	02
Outline Drawing	03
Connection Drawing(s)	04
Spare parts	05

Marks:

MODEL NUMBER:	5KS405XAA408D6	Estimated Weight:	1440 Lbs
Outline Drawing:	239C6400PZ	Time Rating:	CONT
Connection Diagram:	GEM2034E-FIG7	Enclosure:	TEFC
Instruction Book:	GEI-56128	Encl Construction:	841
Design Code:	40BD4038A	Ambient Max(°C):	40
Type:	KS	Alt Ambient Max(°C):	--
Frame:	405T	Insulation Class:	H
Phases:	3	NEMA Design:	B
Poles:	8	Nominal Efficiency:	93.0 %
Output Power:	60HP 44.4KW	Guaranteed Efficiency:	92.4 %
RPM:	890	3/4 Load Efficiency:	93.5 %
Voltage:	460	KVA Code:	G
Hertz:	60	Max KVAR:	37.0
Amps - FL:	88.2	Power Factor:	68.5
Service Factor:	1.15	Bearing - DE:	6316ZC3
Alt Service Factor:	--	Bearing - ODE:	6316ZC3

Enclosure is Totally Enclosed Fan-Cooled

Stamped Nameplate Notes:

IEEE-STD-841-2009
 DE BRG 80BC03JP3, ODE BRG 80BC03JP3
 STAMP NP249A5564P051 AS BELOW:
 MODEL:5KS405XAA408D6 S/N: XXX
 CSA CERTIFIED CSA09.2216219 FOR EX NA IIC 200 C GC
 CL 1 ZONE2 AEX NA IIC 200C;CL 1 DIV2 GRP ABCD 200C
 IN -25C <= AMB <= 40C, 1.0 SF ON SINE-WAVE PWR
 SURF TEMP 230C AT 1.15SF ON SINE-WAVE PWR
 OR 200C VT OR 230C CT OR 200C CHP PWM CONTROL
 ALTERNATE RATING FOR PWM CONTROL 1.0SF 40C AMB
 VT 0 - 60 HZ, CT 15-60 HZ, CHP 60-90 HZ.



Additional Information:

8P - T EXTN
PAINTED FRAME ID & SHAFT,
FAN COVER INSIDE & ODE E/S OUTSIDE
700 CU IN - 3.00" NPT
INPRO SEAL BOTH ENDS
OIL RESISTANT SLEEVING ON LEADS
.0015" TIR SHAFT RUNOUT
ROUTINE TEST REPORT AND 5 POINT VIBRATION TEST
REPORT INCLUDED IN C/B
COPPER WASHER UNDER HEADS OF BEARING CAP BOLTS,
APPLY TITE-SEAL (A50CD427A) ON BEARING CAP SCREWS,
RABBETS AND PLUG THREADS.
GROUND PAD
F1 MOUNTING



Performance Characteristics

1st Winding 1st Connection

Design: 40BD4038A

Marks:

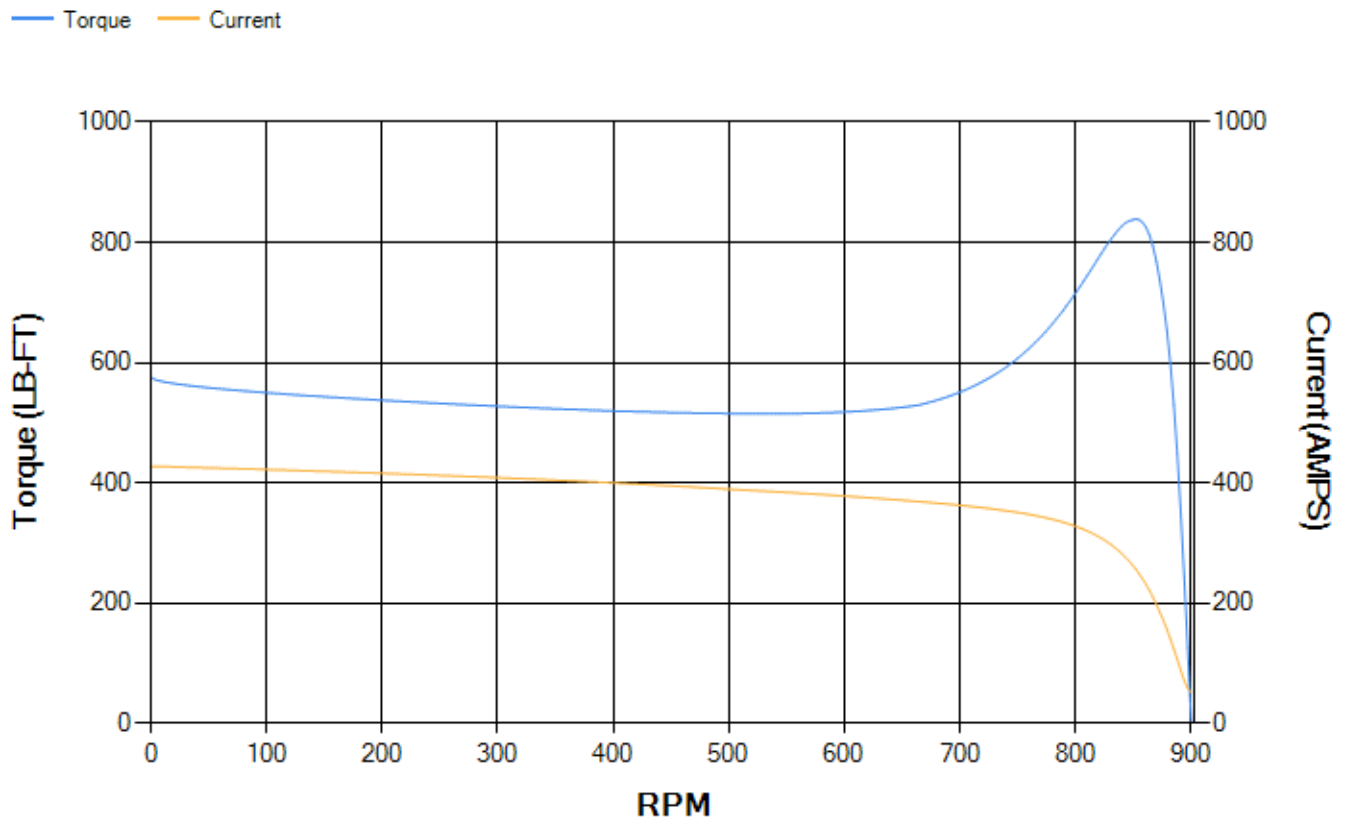
LOAD %	125.0	115.0	100.0	75.0	50.0	25.0	0.0
% EFF	92.85	93.11	93.6	93.5	92.68	88.7	0.00
% PF	72.36	71.03	68.26	60.83	48.28	28.78	2.82
AMPS	104.47	97.64	87.84	74.05	62.75	54.99	51.59

TORQ(FL)#FT	353.95	TORQ(LR)%FL	162.88	TORQ(BD)%FL	236.24
AMPS(LR)	427.51	PF AT START	0.36		

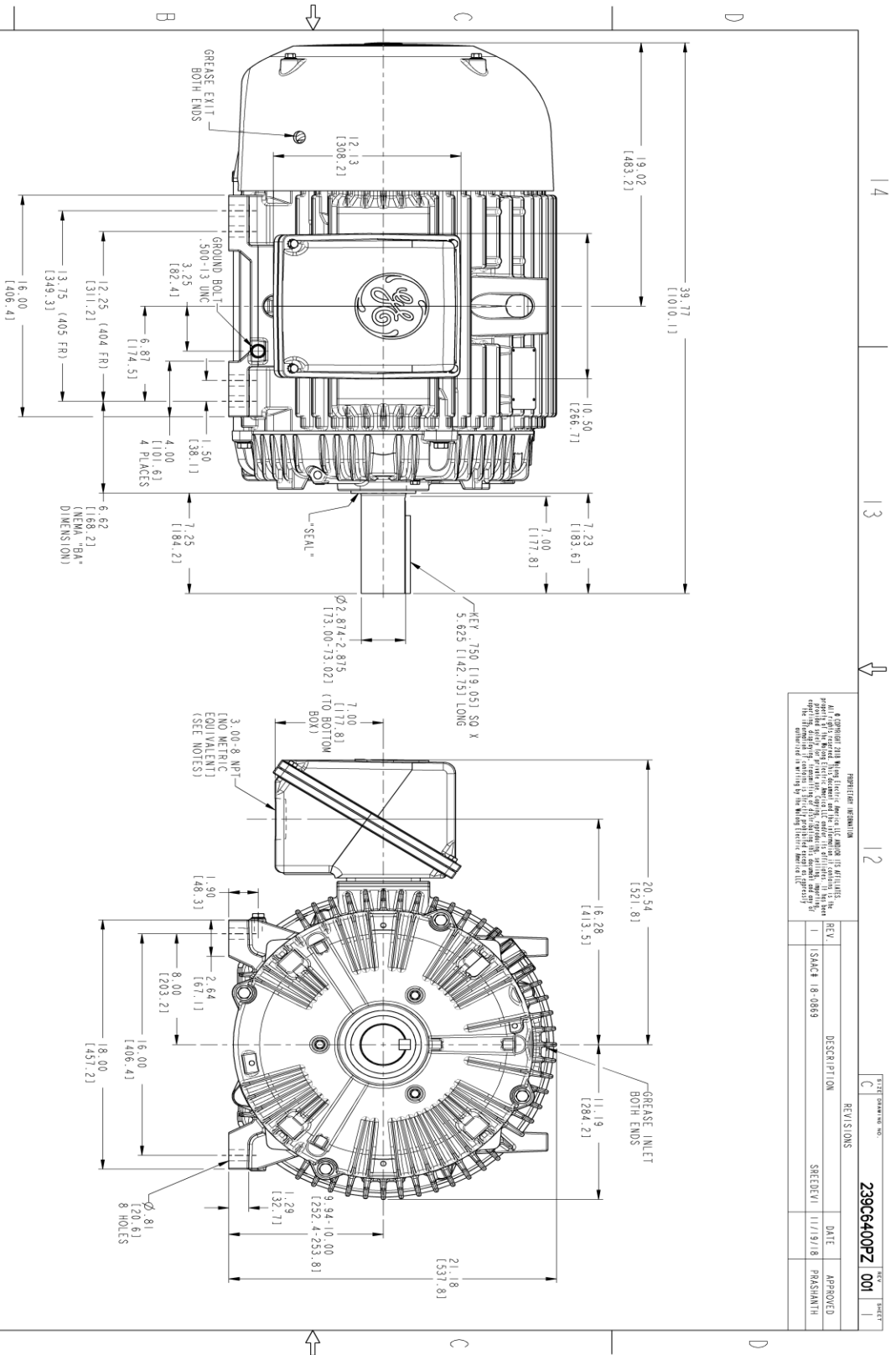
This motor is capable of two cold or one hot start with a maximum connected load inertia of 5753 Lb-Ft Sq (242.2 Kg-meter Sq) at 100% voltage, where the load torque varies with the square of the speed. Acceleration time with maximum inertia and the above load type is 38 seconds. Safe stall time at 100% voltage is 112 seconds cold, 58 seconds hot. Rotor inertia is 31.82 Lb-Ft Sq (1.34 Kg-meter Sq).

Open Circuit A-C:	0.349	Short Circuit D-C:	0.021
Short Circuit A-C:	0.038	X/R Ratio:	7.935
Stator Slots:	72	Rotor Slots:	58

Speed Torque Current Curve (First Connection, First Speed)



Marks:



REVISION INFORMATION ALL DIMENSIONS ARE IN INCHES UNLESS OTHERWISE SPECIFIED. DIMENSIONS ARE TO BE TAKEN FROM THE DIMENSION LINES UNLESS OTHERWISE SPECIFIED. DIMENSIONS ARE TO BE TAKEN FROM THE DIMENSION LINES UNLESS OTHERWISE SPECIFIED. DIMENSIONS ARE TO BE TAKEN FROM THE DIMENSION LINES UNLESS OTHERWISE SPECIFIED.			
REV.	DESCRIPTION	DATE	APPROVED
1	ISSUE 18-0869	11/19/18	PRASANTH
REVISIONS C		239C6400PZ 001	SHEET 1 OF 1

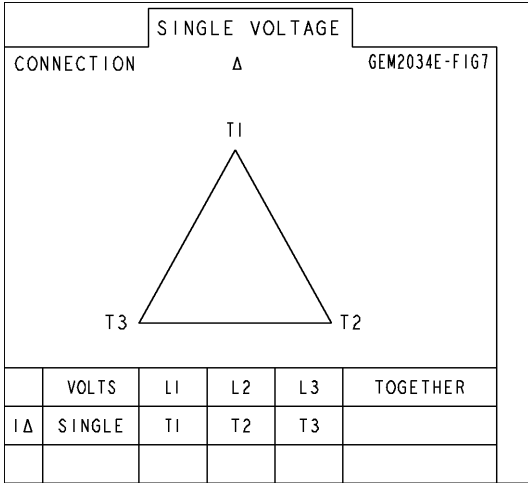
- NOTES:
1. CONDUIT BOX MAY BE PLACED WITH THE ENTRANCE DOWN, UP OR ON EITHER SIDE.
 2. F-1 ASSEMBLY AS SHOWN.
 3. F-2 ASSEMBLY CONDUIT BOX ON OPPOSITE SIDE.
 4. BRACKETED DIMENSIONS ARE METRIC (MILLIMETERS).
 5. TOLERANCE ON PERMISSIBLE SHAFT EXTENSION RUNOUT IS .0015 T.I.R.



SIGNATURES		DATE	
MODEL	TEJASNI	06/29/15	
DESIGN	TEJASNI	06/29/15	
CHECKED	KARHIK	06/29/15	
DATE	VIKRAM	06/29/15	
W/S			
QUALITY	TEJASNI	06/29/15	
ISSUED			
SCALE: 0.250	REF. NO: 239C64006		
GE INDUSTRIAL MOTORS A WOLONG COMPANY		TITLE 404/405 T TEFC XSD 841 700 CU. IN. CONDUIT BOX	
239C6400PZ 001		REV SHEET 1 OF 1	

Marks:

Connection Diagram
GEM2034E-FIG7



End shield Assembly		
Part Description	DE Side Part#	ODE Side Part#
End Shield	115E4304AA1	115E4304LL1
Bearing	235A2518AC01	235A2518AC01
Slinger/Inproseal	235A4575GS4	235A4575GS4

Fan & Fan Cover Assembly	
Part Description	Part#
Fan	159C7100G02
Fan Cover	128D6832AA1

Conduit & Accessories Box Assembly	
Part Description	Part#
Conduit Box	118D4408AD2

Mechanical Accessories	
Part Description	Part#
Brake	
Tachometer	

