



GE INDUSTRIAL MOTORS
a **WOLONG** company

Product Technical Information

June 25, 2020

Data shown is for the current revision model #. Ensure your nameplate model # matches.

Model Number:	5KS405XAA308D6
Catalog Number:	M9464
Instruction Manual:	GEI-56128
Connection Diagram:	GEM2034E-FIG1
Outline Drawing:	239C6400PZ

Accessory Connection Diagrams

Bearing Thermocouple:	None	Heater:	None
RTD:	None	Thermistor:	None
Thermostat:	None	Winding Thermocouple:	None
Bearing RTD:	None		

Table of Contents

Specification	01
Performance Characteristics	02
Outline Drawing	03
Connection Drawing(s)	04
Spare parts	05

Marks:

MODEL NUMBER:	5KS405XAA308D6	Estimated Weight:	1430 Lbs
Outline Drawing:	239C6400PZ	Time Rating:	CONT
Connection Diagram:	GEM2034E-FIG1	Enclosure:	TEFC
Instruction Book:	GEI-56128	Encl Construction:	841
Design Code:	40BD3069A	Ambient Max(°C):	40
Type:	KS	Alt Ambient Max(°C):	--
Frame:	405T	Insulation Class:	H
Phases:	3	NEMA Design:	B
Poles:	6	Nominal Efficiency:	94.5 %
Output Power:	75HP 55.5KW	Guaranteed Efficiency:	94.1 %
RPM:	1190	3/4 Load Efficiency:	94.6 %
Voltage:	460	KVA Code:	G
Hertz:	60	Max KVAR:	29.5
Amps - FL:	92.9	Power Factor:	80.0
Service Factor:	1.15	Bearing - DE:	6316ZC3
Alt Service Factor:	--	Bearing - ODE:	6316ZC3

Enclosure is Totally Enclosed Fan-Cooled

Stamped Nameplate Notes:

IEEE-STD-841-2009

DE BRG 80BC03JP3, ODE BRG 80BC03JP3

STAMP NP249A5564P051 AS BELOW:

MODEL:5KS405XAA308D6 S/N: XXX

CSA CERTIFIED CSA09.2216219 FOR EX NA IIC 200 C GC

CL 1 ZONE2 AEX NA IIC 200C;CL 1 DIV2 GRP ABCD 200C

IN -25C <= AMB <= 40C, 1.0 SF ON SINE-WAVE PWR

SURF TEMP 230C AT 1.15SF ON SINE-WAVE PWR

OR 200C VT OR 230C CT OR 200C CHP PWM CONTROL

ALTERNATE RATING FOR PWM CONTROL 1.0SF 40C AMB

VT 0 - 60 HZ, CT 7.5-60 HZ, CHP 60-90 HZ.



Additional Information:

6P - T EXTN
PAINTED FRAME ID & SHAFT,
FAN COVER INSIDE & ODE E/S OUTSIDE
700 CU IN - 3.00" NPT
INPRO SEAL BOTH ENDS
OIL RESISTANT SLEEVING ON LEADS
.0015" TIR SHAFT RUNOUT
ROUTINE TEST REPORT AND 5 POINT VIBRATION TEST
REPORT INCLUDED IN C/B
COPPER WASHER UNDER HEADS OF BEARING CAP BOLTS,
APPLY TITE-SEAL (A50CD427A) ON BEARING CAP SCREWS,
RABBETS AND PLUG THREADS.
GROUND PAD
F1 MOUNTING



Performance Characteristics

1st Winding 1st Connection

Design: 40BD3069A

Marks:

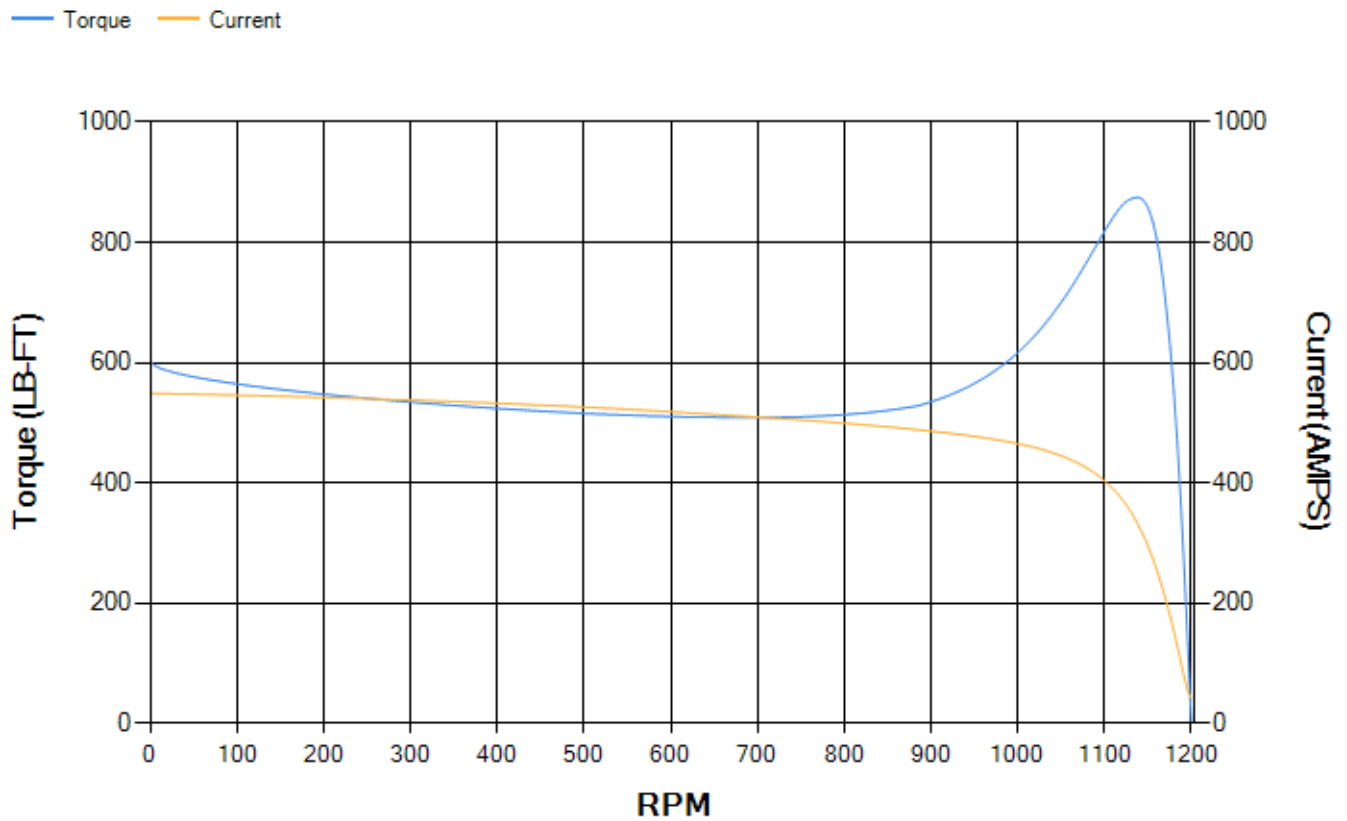
LOAD %	125.0	115.0	100.0	75.0	50.0	25.0	0.0
% EFF	93.82	94.08	94.59	94.62	94.17	91.27	0.00
% PF	82.48	81.75	80.04	74.72	63.65	41.17	3.29
AMPS	113.39	104.96	92.52	74.46	58.55	46.7	41.23

TORQ(FL)#FT	331.31	TORQ(LR)%FL	181.88	TORQ(BD)%FL	263.16
AMPS(LR)	548.95	PF AT START	0.35		

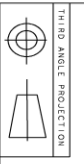
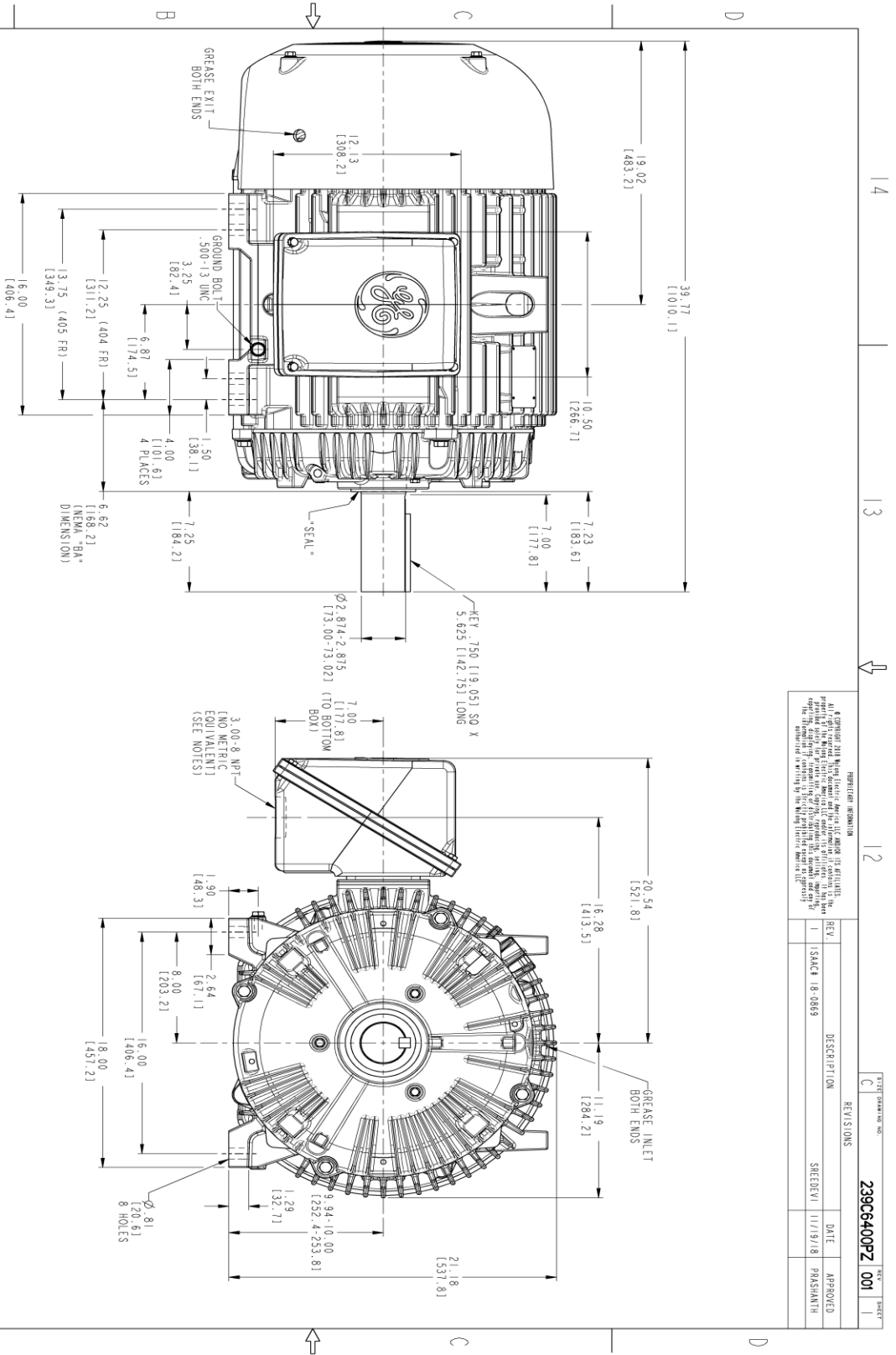
This motor is capable of two cold or one hot start with a maximum connected load inertia of 4906 Lb-Ft Sq (206.54 Kg-meter Sq)at 100% voltage, where the load torque varies with the square of the speed. Acceleration time with maximum inertia and the above load type is 42 seconds. Safe stall time at 100% voltage is 103 seconds cold, 56 seconds hot. Rotor inertia is 30.64 Lb-Ft Sq (1.29 Kg-meter Sq).

Open Circuit A-C:	0.58	Short Circuit D-C:	0.021
Short Circuit A-C:	0.038	X/R Ratio:	7.766
Stator Slots:	72	Rotor Slots:	58

Speed Torque Current Curve (First Connection, First Speed)



Marks:



- NOTES:
1. CONDUIT BOX MAY BE PLACED WITH THE ENTRANCE DOWN, UP OR ON EITHER SIDE.
 2. F-1 ASSEMBLY AS SHOWN.
 3. F-2 ASSEMBLY CONDUIT BOX ON OPPOSITE SIDE.
 4. BRACKETED DIMENSIONS ARE METRIC (MILLIMETERS).
 5. TOLERANCE ON PERMISSIBLE SHAFT EXTENSION RUNOUT IS .0015 T.I.R.

REV.	DESCRIPTION	DATE	APPROVED
1	ISSUE	11/19/18	PRASHANTH

REV.	DESCRIPTION	DATE	APPROVED
1	ISSUE	11/19/18	PRASHANTH

239C6400PZ 001

SIGNATURES	DATE
DESIGNER: TEJASNI	06/29/15
CHECKED: KARHIK	06/29/15
DATE: 06/29/15	
DESIGNER: TEJASNI	06/29/15
CHECKED: KARHIK	06/29/15

GE INDUSTRIAL MOTORS
a WOLONG company

OUTLINE
404/405 T TEFC XSD 841
700 CU. IN. CONDUIT BOX

239C6400PZ 001

SCALE: 0.250

REF. NO.: 239C64006

SHEET 1 OF 1

Marks:

Connection Diagram
GEM2034E-FIG1



End shield Assembly		
Part Description	DE Side Part#	ODE Side Part#
End Shield	115E4304AA1	115E4304LL1
Bearing	235A2518AC01	235A2518AC01
Slinger/Inproseal	235A4575GS4	235A4575GS4

Fan & Fan Cover Assembly	
Part Description	Part#
Fan	159C7100G02
Fan Cover	128D6832AA1

Conduit & Accessories Box Assembly	
Part Description	Part#
Conduit Box	118D4408AD2

Mechanical Accessories	
Part Description	Part#
Brake	
Tachometer	

