



GE INDUSTRIAL MOTORS
a **WOLONG** company

Product Technical Information

April 1, 2021

Data shown is for the current revision model #. Ensure your nameplate model # matches.

Model Number:	5KS444XAA408D4
Catalog Number:	M9465
Instruction Manual:	GEI-56128
Connection Diagram:	GEM2034E-FIG7
Outline Drawing:	239C6600YF

Accessory Connection Diagrams

Bearing Thermocouple:	None	Heater:	None
RTD:	None	Thermistor:	None
Thermostat:	None	Winding Thermocouple:	None
Bearing RTD:	None		

Table of Contents

Specification	01
Performance Characteristics	02
Outline Drawing	03
Connection Drawing(s)	04
Spare parts	05

Marks:

MODEL NUMBER:	5KS444XAA408D4	Estimated Weight:	1700 Lbs
Outline Drawing:	239C6600YF	Time Rating:	CONT
Connection Diagram:	GEM2034E-FIG7	Enclosure:	TEFC
Instruction Book:	GEI-56128	Encl Construction:	841
Design Code:	44BD4011A	Ambient Max(°C):	40
Type:	KS	Alt Ambient Max(°C):	--
Frame:	444T	Insulation Class:	H
Phases:	3	NEMA Design:	B
Poles:	8	Nominal Efficiency:	93.6 %
Output Power:	75HP 55.5KW	Guaranteed Efficiency:	93.0 %
RPM:	890	3/4 Load Efficiency:	93.9 %
Voltage:	460	KVA Code:	G
Hertz:	60	Max KVAR:	35.7
Amps - FL:	101.0	Power Factor:	74.5
Service Factor:	1.15	Bearing - DE:	6318ZC3
Alt Service Factor:	--	Bearing - ODE:	6318ZC3

Enclosure is Totally Enclosed Fan-Cooled

Stamped Nameplate Notes:

IEEE-STD-841-2009
 DE BRG 90BC03JP3, ODE BRG 90BC03JP3
 STAMP NP249A5564P051 AS BELOW:
 MODEL:5KS444XAA408D4 S/N: XXX
 CSA CERTIFIED CSA09.2216219 FOR EX NA IIC 200 C GC
 CL 1 ZONE2 AEX NA IIC 200C;CL 1 DIV2 GRP ABCD 200C
 IN -25C <= AMB <= 40C, 1.0 SF ON SINE-WAVE PWR
 SURF TEMP 215C AT 1.15SF ON SINE-WAVE PWR
 OR 200C VT OR 230C CT OR 200C CHP PWM CONTROL
 ALTERNATE RATING FOR PWM CONTROL 1.0SF 40C AMB
 VT 0 - 60 HZ, CT 6-60 HZ, CHP 60-90 HZ.



Additional Information:

8P - T EXTN
PAINTED FRAME ID & SHAFT,
FAN COVER INSIDE & ODE E/S OUTSIDE
700 CU IN - 3.00" NPT
INPRO SEAL BOTH ENDS
OIL RESISTANT SLEEVING ON LEADS
.0015" TIR SHAFT RUNOUT
ROUTINE TEST REPORT AND 5 POINT VIBRATION TEST
REPORT INCLUDED IN C/B
COPPER WASHER UNDER HEADS OF BEARING CAP BOLTS,
APPLY TITE-SEAL (A50CD427A) ON BEARING CAP SCREWS,
RABBETS AND PLUG THREADS.
GROUND PAD
F1 MOUNTING



Performance Characteristics

1st Winding 1st Connection

Design: 44BD4011A

Marks:

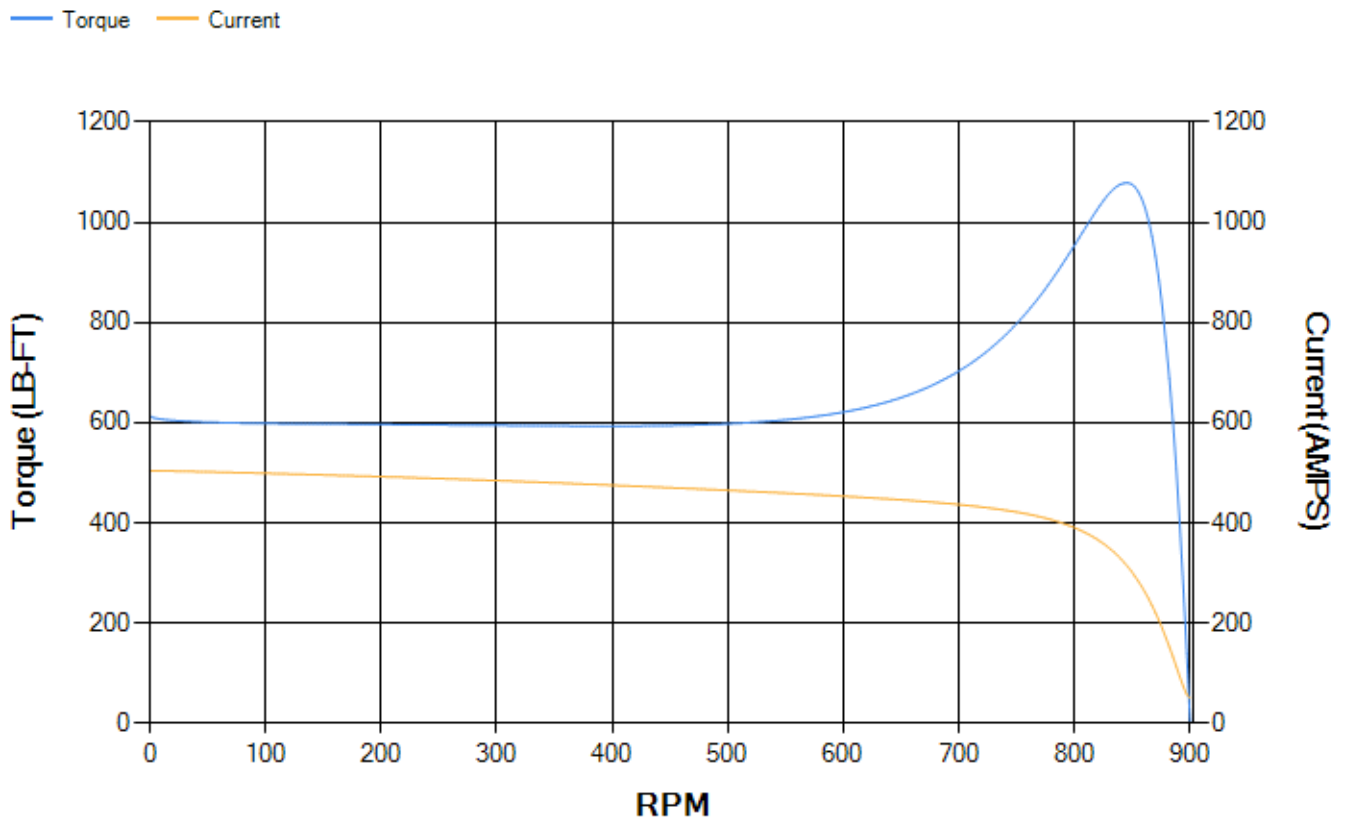
LOAD %	125.0	115.0	100.0	75.0	50.0	25.0	0.0
% EFF	93.38	93.62	94.08	93.94	93.13	89.3	0.00
% PF	77.02	76.25	74.37	68.51	56.96	35.82	3.65
AMPS	122	113.09	100.33	81.81	66.16	54.86	49.84

TORQ(FL)#FT	443.04	TORQ(LR)%FL	138.65	TORQ(BD)%FL	243.01
AMPS(LR)	504.32	PF AT START	0.33		

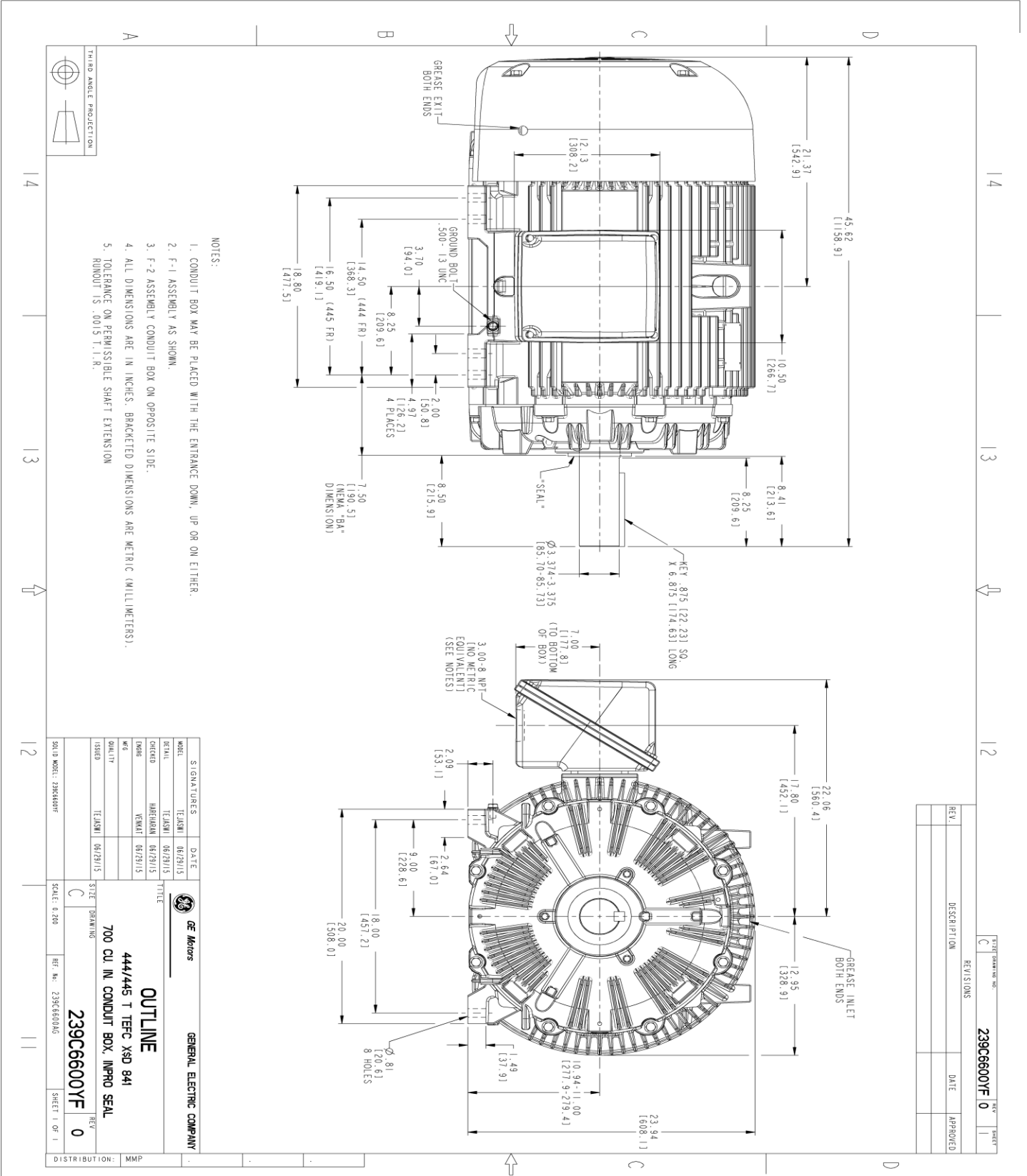
This motor is capable of two cold or one hot start with a maximum connected load inertia of 9270 Lb-Ft Sq (390.27 Kg-meter Sq)at 100% voltage, where the load torque varies with the square of the speed. Acceleration time with maximum inertia and the above load type is 52 seconds. Safe stall time at 100% voltage is 118 seconds cold, 63 seconds hot. Rotor inertia is 53.88 Lb-Ft Sq (2.27 Kg-meter Sq).

Open Circuit A-C:	0.391	Short Circuit D-C:	0.026
Short Circuit A-C:	0.034	X/R Ratio:	9.861
Stator Slots:	72	Rotor Slots:	58

Speed Torque Current Curve (First Connection, First Speed)



Marks:



NOTES:

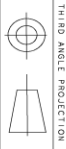
- 1. CONDUIT BOX MAY BE PLACED WITH THE ENTRANCE DOWN, UP OR ON EITHER.
- 2. F-1 ASSEMBLY AS SHOWN.
- 3. F-2 ASSEMBLY CONDUIT BOX ON OPPOSITE SIDE.
- 4. ALL DIMENSIONS ARE IN INCHES. BRACKETED DIMENSIONS ARE METRIC (MILLIMETERS).
- 5. TOLERANCE ON PERMISSIBLE SHAFT EXTENSION MINIMUM IS .0015" I. I. N.

TITLE		REV	DATE
239C6600YF 0		0	
REV.	DESCRIPTION	DATE	APPROVED

SIGNATURES		DATE
MODEL	TEJANI	06/29/15
DRAWN	TEJANI	06/29/15
CHECKED	HANDEMAN	06/29/15
ENGINEER	VENKAT	06/29/15
QUALITY	TEJANI	06/29/15
ISSUED	TEJANI	06/29/15

GENERAL ELECTRIC COMPANY
OUTLINE
 444/445 T TEFC XSD 841
 700 CU. IN. CONDUIT BOX, INPRO SEAL
239C6600YF
 0

SCALE: 0.200 REF. No.: 239C6600AG SHEET 1 OF 1



Marks:

Connection Diagram
GEM2034E-FIG7



End shield Assembly		
Part Description	DE Side Part#	ODE Side Part#
End Shield	115E4355AA1	115E4355LM1
Bearing	235A2514AG01	235A2514AG01
Slinger/Inproseal	235A4575GS5	235A4575GS5

Fan & Fan Cover Assembly	
Part Description	Part#
Fan	159C7100G03
Fan Cover	128D6841AA1

Conduit & Accessories Box Assembly	
Part Description	Part#
Conduit Box	118D4408AD2

Mechanical Accessories	
Part Description	Part#
Brake	
Tachometer	

