



GE INDUSTRIAL MOTORS
a WOLONG company

Product Technical Information

June 25, 2020

Data shown is for the current revision model #. Ensure your nameplate model # matches.

Model Number:	5KS445XAA118D10
Catalog Number:	M9474
Instruction Manual:	GEI-56128
Connection Diagram:	GEM2034E-FIG7
Outline Drawing:	239C6H00AC

Accessory Connection Diagrams

Bearing Thermocouple:	None	Heater:	None
RTD:	None	Thermistor:	None
Thermostat:	None	Winding Thermocouple:	None
Bearing RTD:	None		

Table of Contents

Specification	01
Performance Characteristics	02
Outline Drawing	03
Connection Drawing(s)	04
Spare parts	05

Marks:

MODEL NUMBER:	5KS445XAA118D10	Estimated Weight:	1990 Lbs
Outline Drawing:	239C6H00AC	Time Rating:	CONT
Connection Diagram:	GEM2034E-FIG7	Enclosure:	TEFC
Instruction Book:	GEI-56128	Encl Construction:	841
Design Code:	44BD0196A	Ambient Max(°C):	40
Type:	KS	Alt Ambient Max(°C):	--
Frame:	445TS	Insulation Class:	H
Phases:	3	NEMA Design:	B
Poles:	2	Nominal Efficiency:	95.0 %
Output Power:	150HP 111KW	Guaranteed Efficiency:	94.5 %
RPM:	3580	3/4 Load Efficiency:	95.2 %
Voltage:	460	KVA Code:	G
Hertz:	60	Max KVAR:	27.5
Amps - FL:	163.0	Power Factor:	90.5
Service Factor:	1.15	Bearing - DE:	6314ZC3
Alt Service Factor:	--	Bearing - ODE:	6314ZC3

Enclosure is Totally Enclosed Fan-Cooled

Stamped Nameplate Notes:

EXCEPTION TO IEEE-STD-841-2009: SOUND POWER 92 DBA
 DE BRG 70BC03JP30, ODE BRG 70BC03JP30
 STAMP NP249A5564P051 AS BELOW:
 MODEL:5KS445XAA118D10 S/N: XXX
 CSA CERTIFIED CSA09.2216219 FOR EX NA IIC 200 C GC
 CL 1 ZONE2 AEX NA IIC 200C;CL 1 DIV2 GRP ABCD 200C
 IN -25C <= AMB <= 40C, 1.0 SF ON SINE-WAVE PWR
 SURF TEMP 200C AT 1.15SF ON SINE-WAVE PWR
 OR 200C VT OR 230C CT OR ---C CHP PWM CONTROL
 ALTERNATE RATING FOR PWM CONTROL 1.0SF 40C AMB
 VT 0 - 60 HZ, CT 6 - 60 HZ, CHP -- HZ.



Additional Information:

2P - TS EXTN
PAINTED FRAME ID & SHAFT,
FAN COVER INSIDE & ODE E/S OUTSIDE
700 CU IN - 3.00" NPT
INPRO SEAL BOTH ENDS
OIL RESISTANT SLEEVING ON LEADS
.0015" TIR SHAFT RUNOUT
ROUTINE TEST REPORT AND 5 POINT VIBRATION TEST
REPORT INCLUDED IN C/B
COPPER WASHER UNDER HEADS OF BEARING CAP BOLTS,
APPLY TITE-SEAL (A50CD427A) ON BEARING CAP SCREWS,
RABBETS AND PLUG THREADS.
GROUND PAD
F1 MOUNTING



Performance Characteristics

1st Winding 1st Connection

Design: 44BD0196A

Marks:

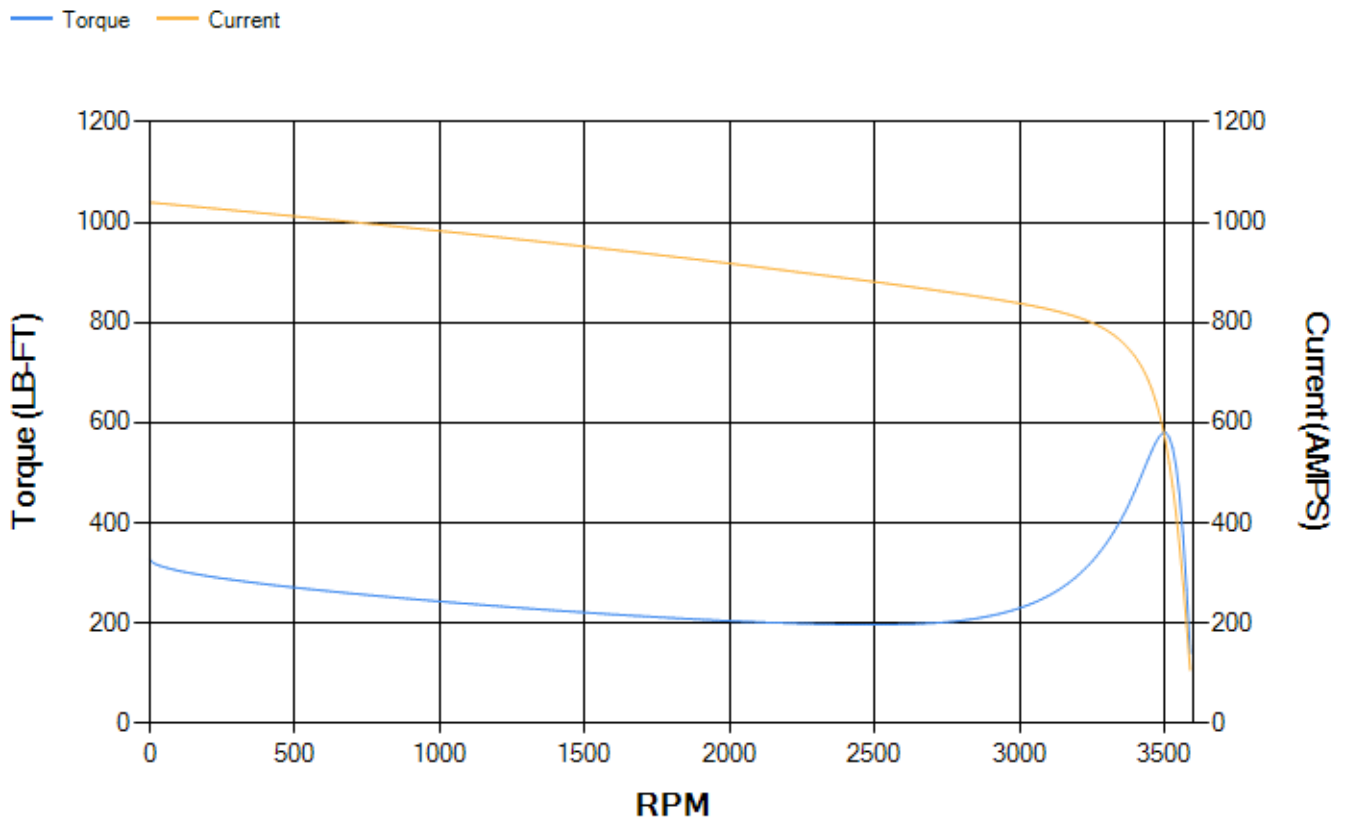
LOAD %	125.0	115.0	100.0	75.0	50.0	25.0	0.0
% EFF	94.93	95.08	95.44	95.23	94.54	91.39	0.00
% PF	90.71	90.82	90.71	89.37	84.76	68.41	7.71
AMPS	203.81	186.97	162.18	123.72	87.61	56.14	38.49

TORQ(FL)#FT	220.08	TORQ(LR)%FL	148.96	TORQ(BD)%FL	263.64
AMPS(LR)	1039.83	PF AT START	0.21		

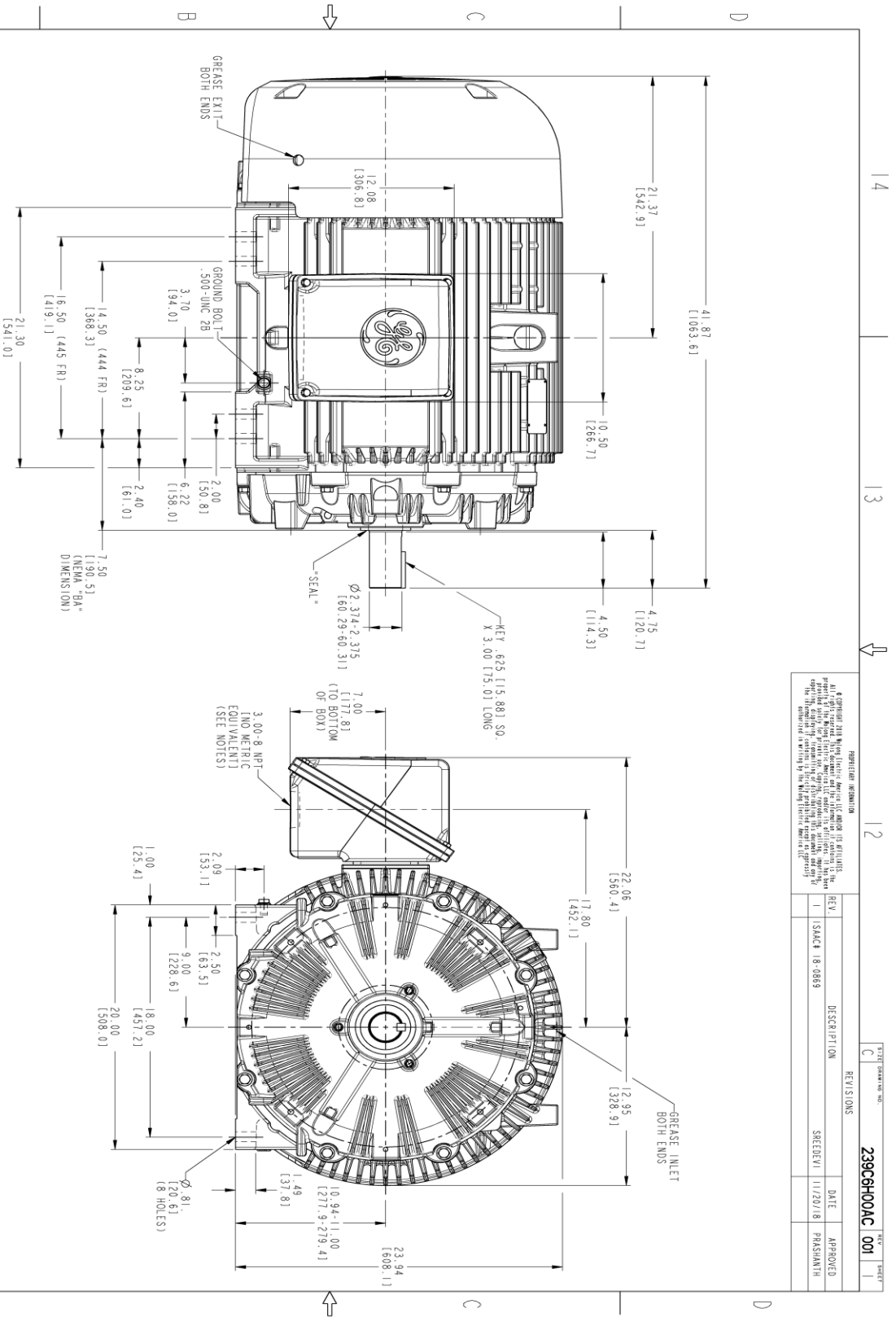
This motor is capable of two cold or one hot start with a maximum connected load inertia of 488 Lb-Ft Sq (20.54 Kg-meter Sq)at 100% voltage, where the load torque varies with the square of the speed. Acceleration time with maximum inertia and the above load type is 33 seconds. Safe stall time at 100% voltage is 74 seconds cold, 40 seconds hot. Rotor inertia is 29.46 Lb-Ft Sq (1.24 Kg-meter Sq).

Open Circuit A-C:	1.863	Short Circuit D-C:	0.037
Short Circuit A-C:	0.072	X/R Ratio:	13.805
Stator Slots:	48	Rotor Slots:	38

Speed Torque Current Curve (First Connection, First Speed)



Marks:



PROHIBITION INFORMATION
 © Copyright 2018 GE Global Energy Services LLC. All rights reserved. No part of this document may be reproduced, stored in a retrieval system, or transmitted in any form or by any means, electronic, mechanical, photocopying, recording, or by any information storage and retrieval system, without the prior written permission of GE Global Energy Services LLC. The information contained herein is the property of GE Global Energy Services LLC and is intended for use only by the individual named in the title of this drawing.

REV.	DESCRIPTION	DATE	APPROVED
1	ISSUE 18-0869	11/20/18	PARSHANTH

- NOTES:**
1. CONDUIT BOX MAY BE PLACED WITH THE ENTRANCE DOWN, UP OR ON EITHER SIDE.
 2. F-1 ASSEMBLY AS SHOWN.
 3. F-2 ASSEMBLY-CONDUIT BOX ON OPPOSITE SIDE.
 4. BRACKETED DIMENSIONS ARE METRIC (MILLIMETERS).
 5. TOLERANCE ON PERMISSIBLE SHAFT EXTENSION RUNOUT IS .0015 T.I.R.

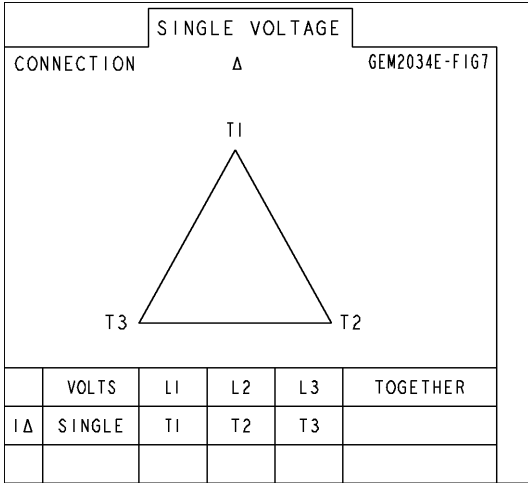


SIGNATURES	DATE	TITLE
MODEL: MGRABU	11/09/17	<p>GE INDUSTRIAL MOTORS a WOLONG company</p> <p>OUTLINE</p> <p>444/445 TS TEFC XSD 841</p> <p>700 CU. IN. CONDUIT BOX, .0015 SHAFT RUNOUT</p> <p>239C6H00AC</p> <p>REV. 001</p>
CHECKED: RAVI N	11/09/17	
DATE: RAVI N	11/09/17	
ISSUED: RAVI N	11/09/17	
SCALE: 0.200		

A
B
C
D
1
2
3
4

Marks:

Connection Diagram
GEM2034E-FIG7



End shield Assembly		
Part Description	DE Side Part#	ODE Side Part#
End Shield	115E4354AA1	115E4354LL1
Bearing	235A2516AC01	235A2516AC01
Slinger/Inproseal	235A4575GS3	235A4575GS3

Fan & Fan Cover Assembly	
Part Description	Part#
Fan	159C7100AA1
Fan Cover	128D6841AA1

Conduit & Accessories Box Assembly	
Part Description	Part#
Conduit Box	118D4408AD2

Mechanical Accessories	
Part Description	Part#
Brake	
Tachometer	

