



GE INDUSTRIAL MOTORS
a **WOLONG** company

Product Technical Information

October 24, 2020

Data shown is for the current revision model #. Ensure your nameplate model # matches.

Model Number:	5KS447XAA208D7
Catalog Number:	M9478
Instruction Manual:	GEI-56128
Connection Diagram:	GEM2034E-FIG7
Outline Drawing:	239C6800VW

Accessory Connection Diagrams

Bearing Thermocouple:	None	Heater:	None
RTD:	None	Thermistor:	None
Thermostat:	None	Winding Thermocouple:	None
Bearing RTD:	None		

Table of Contents

Specification	01
Performance Characteristics	02
Outline Drawing	03
Connection Drawing(s)	04
Spare parts	05

Marks:

MODEL NUMBER:	5KS447XAA208D7	Estimated Weight:	2770 Lbs
Outline Drawing:	239C6800VW	Time Rating:	CONT
Connection Diagram:	GEM2034E-FIG7	Enclosure:	TEFC
Instruction Book:	GEI-56128	Encl Construction:	841
Design Code:	49BD1177A	Ambient Max(°C):	40
Type:	KS	Alt Ambient Max(°C):	--
Frame:	447T	Insulation Class:	H
Phases:	3	NEMA Design:	B
Poles:	4	Nominal Efficiency:	96.2 %
Output Power:	200HP 148KW	Guaranteed Efficiency:	95.8 %
RPM:	1790	3/4 Load Efficiency:	--
Voltage:	460	KVA Code:	G
Hertz:	60	Max KVAR:	43.5
Amps - FL:	219.0	Power Factor:	89.0
Service Factor:	1.15	Bearing - DE:	6318ZC3
Alt Service Factor:	--	Bearing - ODE:	6318ZC3

Enclosure is Totally Enclosed Fan-Cooled

Stamped Nameplate Notes:

IEEE-STD-841-2009

DE BRG 90BC03JP3, ODE BRG 90BC03JP3

STAMP NP249A5564P051 AS BELOW:

MODEL:5KS447XAA208D7 S/N: XXX

CSA CERTIFIED CSA09.2216219 FOR EX NA IIC 200 C GC

CL 1 ZONE2 AEX NA IIC 200C;CL 1 DIV2 GRP ABCD 200C

IN -25C <= AMB <= 40C, 1.0 SF ON SINE-WAVE PWR

SURF TEMP 260C AT 1.15SF ON SINE-WAVE PWR

OR 215 C VT OR 215 C CT OR 215 C CHP PWM CONTROL

ALTERNATE RATING FOR PWM CONTROL 1.0SF 40C AMB

VT 0-60 HZ, CT 45-60 HZ, CHP 60-75 HZ.



Additional Information:

4P - T EXTN
PAINTED FRAME ID & SHAFT,
FAN COVER INSIDE & ODE E/S OUTSIDE
C/BOX 700 CU IN - 3.00" NPT
INPRO SEAL BOTH ENDS
OIL RESISTANT SLEEVING ON LEADS
.0015" TIR SHAFT RUNOUT
ROUTINE TEST REPORT AND 5 POINT VIBRATION TEST
REPORT INCLUDED IN C/B
COPPER WASHER UNDER HEADS OF BEARING CAP BOLTS,
APPLY TITE-SEAL (A50CD427A) ON BEARING CAP SCREWS,
RABBETS AND PLUG THREADS.
GROUND PAD
F1 MOUNTING



Performance Characteristics

1st Winding 1st Connection

Design: 49BD1177A

Marks:

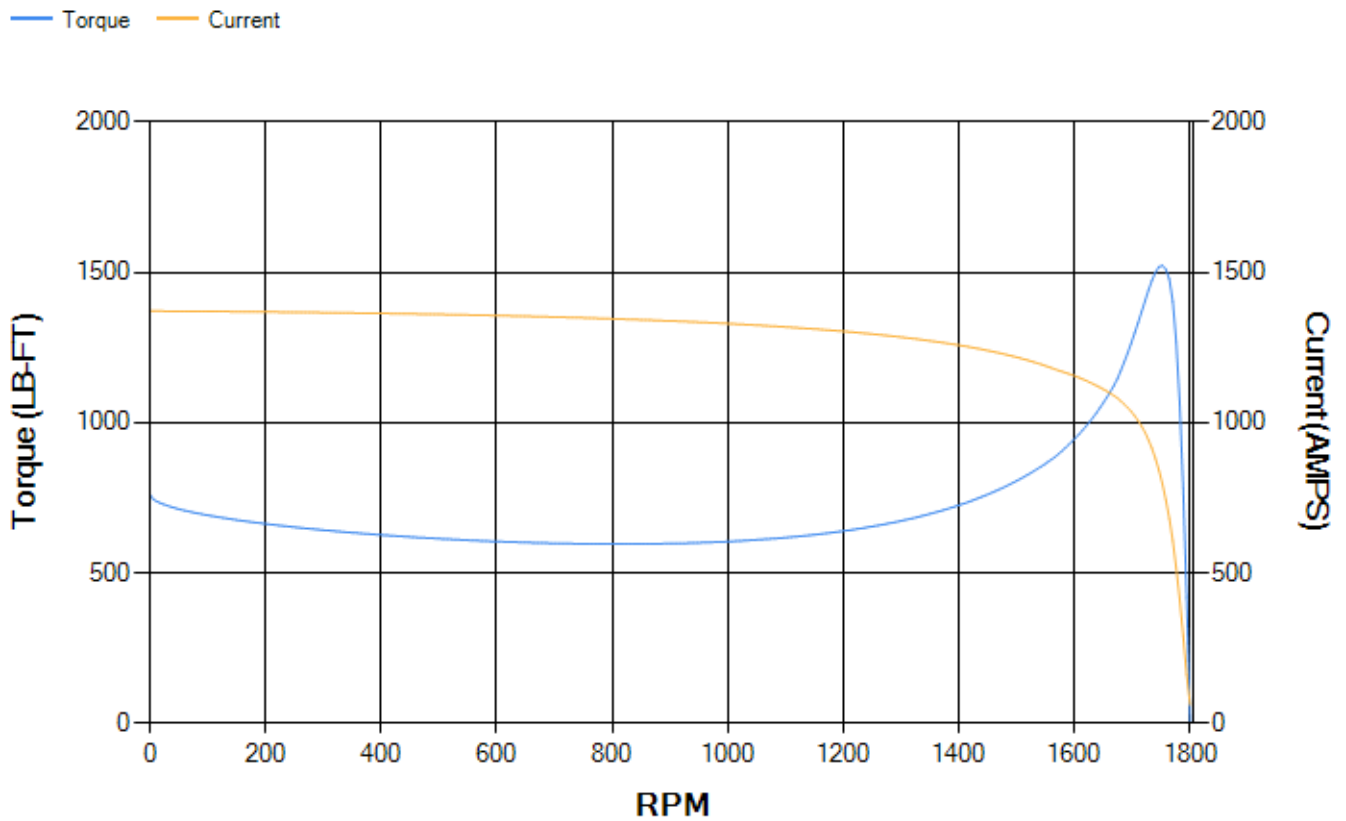
LOAD %	125.0	115.0	100.0	75.0	50.0	25.0	0.0
% EFF	95.58	95.82	96.34	96.52	96.53	95.25	0.00
% PF	89.2	89.16	88.76	86.63	80.37	60.76	3.08
AMPS	274.46	251.96	218.92	167.91	120.64	80.86	60.67

TORQ(FL)#FT	586.55	TORQ(LR)%FL	130.07	TORQ(BD)%FL	259.52
AMPS(LR)	1371.64	PF AT START	0.25		

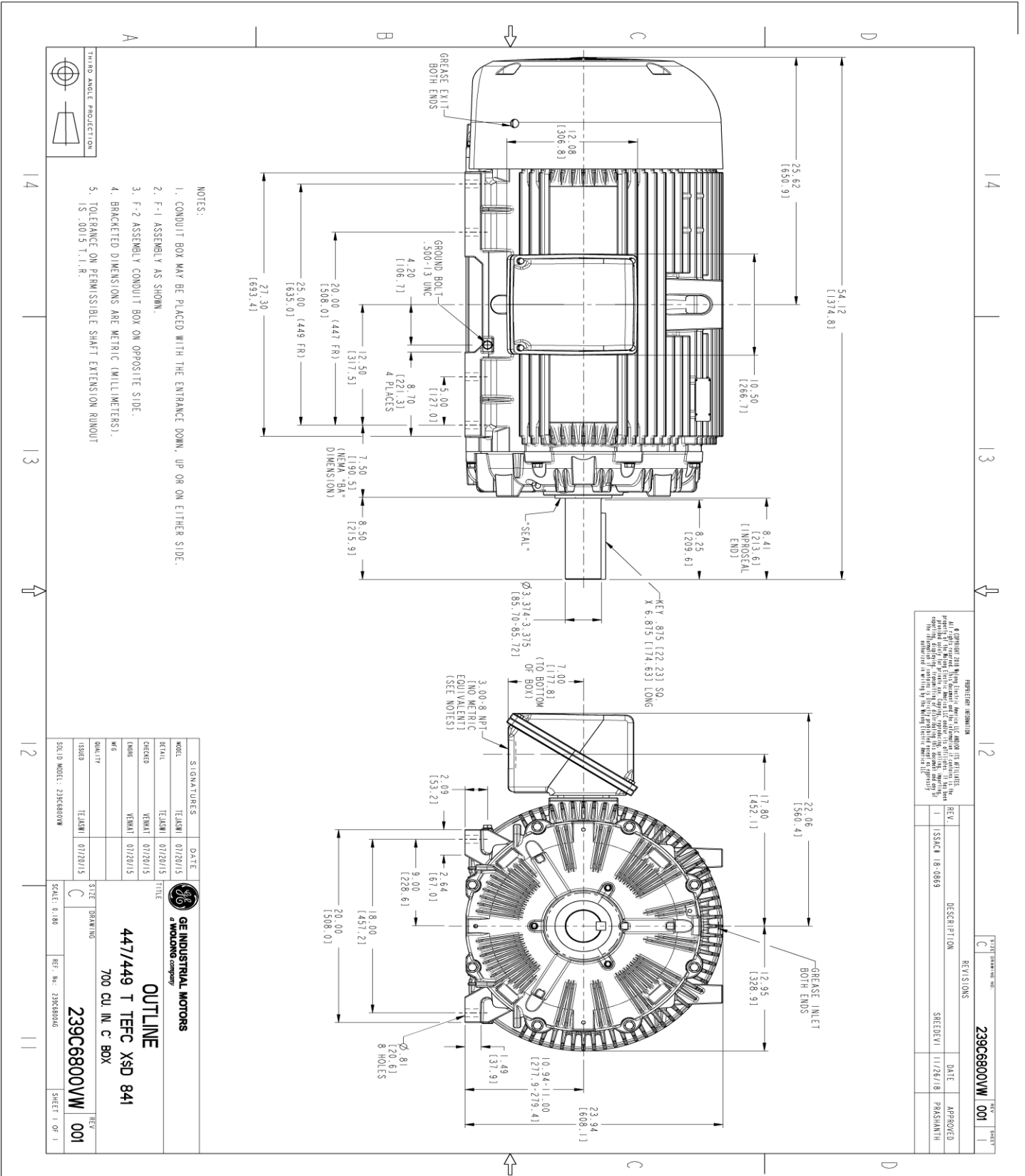
This motor is capable of two cold or one hot start with a maximum connected load inertia of 4712 Lb-Ft Sq (198.38 Kg-meter Sq)at 100% voltage, where the load torque varies with the square of the speed. Acceleration time with maximum inertia and the above load type is 54 seconds. Safe stall time at 100% voltage is 163 seconds cold, 84 seconds hot. Rotor inertia is 105.05 Lb-Ft Sq (4.42 Kg-meter Sq).

Open Circuit A-C:	1.749	Short Circuit D-C:	0.027
Short Circuit A-C:	0.07	X/R Ratio:	10.252
Stator Slots:	72	Rotor Slots:	58

Speed Torque Current Curve (First Connection, First Speed)



Marks:



- NOTES:
- CONDUIT BOX MAY BE PLACED WITH THE ENTRANCE DOWN, UP OR ON EITHER SIDE.
 - F-1 ASSEMBLY AS SHOWN.
 - F-2 ASSEMBLY CONDUIT BOX ON OPPOSITE SIDE.
 - BRACKETED DIMENSIONS ARE METRIC (MILLIMETERS).
 - TOLERANCE ON PERMISSIBLE SHAFT EXTENSION RUNOUT IS .0015 T.1.R.

REPRODUCTION INFORMATION
 It is prohibited to reproduce, copy, or disseminate any part of this drawing without the written permission of GE Industrial Motors. The information contained herein is the property of GE Industrial Motors and is confidential. The information contained herein is the property of GE Industrial Motors and is confidential.

REV.	DESCRIPTION	DATE	APPROVED
1	ISSUE 18-0869	11/28/18	PARSHANTH

SIGNATURES	DATE
TEJASNI	01/22/2015
TEJASNI	01/20/15
TEJASNI	01/20/15
TEJASNI	01/20/15
TEJASNI	01/20/15

GE INDUSTRIAL MOTORS
WOLONG COMPANY
OUTLINE
447/449 T TEFC XSD 841
700 CU. IN. C BOX
239C6800VW
 SCALE: 0.180
 REF. NO.: 239C68006
 SHEET 1 OF 1

Marks:

Connection Diagram
GEM2034E-FIG7



End shield Assembly		
Part Description	DE Side Part#	ODE Side Part#
End Shield	115E4355AA1	115E4355LM1
Bearing	235A2514AG01	235A2514AG01
Slinger/Inproseal	235A4575GS5	235A4575GS5

Fan & Fan Cover Assembly	
Part Description	Part#
Fan	159C7100AA2
Fan Cover	128D6841AA1

Conduit & Accessories Box Assembly	
Part Description	Part#
Conduit Box	118D4408AD2

Mechanical Accessories	
Part Description	Part#
Brake	
Tachometer	

