



GE INDUSTRIAL MOTORS
a **WOLONG** company

Product Technical Information

August 20, 2021

Data shown is for the current revision model #. Ensure your nameplate model # matches.

Model Number:	5KS444SAA118YQK
Catalog Number:	M9511
Instruction Manual:	GEI-56128-SP
Connection Diagram:	GEM2034E-FIG7
Outline Drawing:	239C6H00AH

Accessory Connection Diagrams

Bearing Thermocouple:	None	Heater:	None
RTD:	None	Thermistor:	None
Thermostat:	None	Winding Thermocouple:	None
Bearing RTD:	None		

Table of Contents

Specification	01
Performance Characteristics	02
Outline Drawing	03
Connection Drawing(s)	04
Spare parts	05

Marks:

MODEL NUMBER:	5KS444SAA118YQK	Estimated Weight:	2020 Lbs
Outline Drawing:	239C6H00AH	Time Rating:	CONT
Connection Diagram:	GEM2034E-FIG7	Enclosure:	TEFC
Instruction Book:	GEI-56128-SP	Encl Construction:	841
Design Code:	44BD0197A	Ambient Max(°C):	40
Type:	KS	Alt Ambient Max(°C):	--
Frame:	444TS	Insulation Class:	H
Phases:	3	NEMA Design:	B
Poles:	2	Nominal Efficiency:	95.0 %
Output Power:	125HP 92.5KW	Guaranteed Efficiency:	94.5 %
RPM:	3580	3/4 Load Efficiency:	--
Voltage:	460	KVA Code:	G
Hertz:	60	Max KVAR:	21.8
Amps - FL:	135.0	Power Factor:	91.0
Service Factor:	1.15	Bearing - DE:	6314ZC3
Alt Service Factor:	--	Bearing - ODE:	6314ZC3

Enclosure is Totally Enclosed Fan-Cooled

Stamped Nameplate Notes:

IEEE-STD-841-2009

BALERO DE 70BC03JP30, BALERO ODE 70BC03JP30

STAMP NP249A5564P051 AS BELOW:

MODEL:5KS444SAA118YQK S/N: XXX

CSA CERTIFIED CSA09.2216219 FOR EX NA IIC 200 C GC

CL 1 ZONE2 AEX NA IIC 200C;CL 1 DIV2 GRP ABCD 200C

IN -40C <= AMB <= 40C, 1.0 SF ON SINE-WAVE PWR

SURF TEMP 200C AT 1.15SF ON SINE-WAVE PWR

OR 200C VT OR 200C CT OR ---C CHP PWM CONTROL

ALTERNATE RATING FOR PWM CONTROL 1.0SF 40C AMB

VT 0 - 60 HZ, CT 3-60 HZ, CHP -- HZ.

ESTANDAR DE REFERENCIA: NEMA-MG-1

ALTURA MAXIMA EN METROS: 1000 METROS

ANO DE MANUFACTURA: STAMP AS PER SAP

MASA: 916 KG

POSICION: HORIZONTAL

AMPERAJE/CORRIENTE DE ROTOR BLOQUEADO: 883.4 AMPS

TORQUE DE ROTOR BLOQUEADO: 392.1 N-M

TORQUE A PLENA CARGA: 248.5 N-M

MAXIMA VELOCIDAD DE OPERACION SEGURA: 3600 RPM

AMBIENTE MINIMO: -40 DEG C



Additional Information:

2P - TS EXTN
PAINTED FRAME ID & SHAFT,
FAN COVER INSIDE & ODE E/S OUTSIDE
C/BOX 700 CU IN - 3.00" NPT
OIL RESISTANT SLEEVING ON LEADS
.0015" TIR SHAFT RUNOUT
ROUTINE TEST REPORT AND 5 POINT VIBRATION TEST
REPORT INCLUDED IN C/B
GROUND PAD
F1 MOUNTING
RETIE/RETIQ CERTIFIED MOTOR



Performance Characteristics

1st Winding 1st Connection

Design: 44BD0197A

Marks:

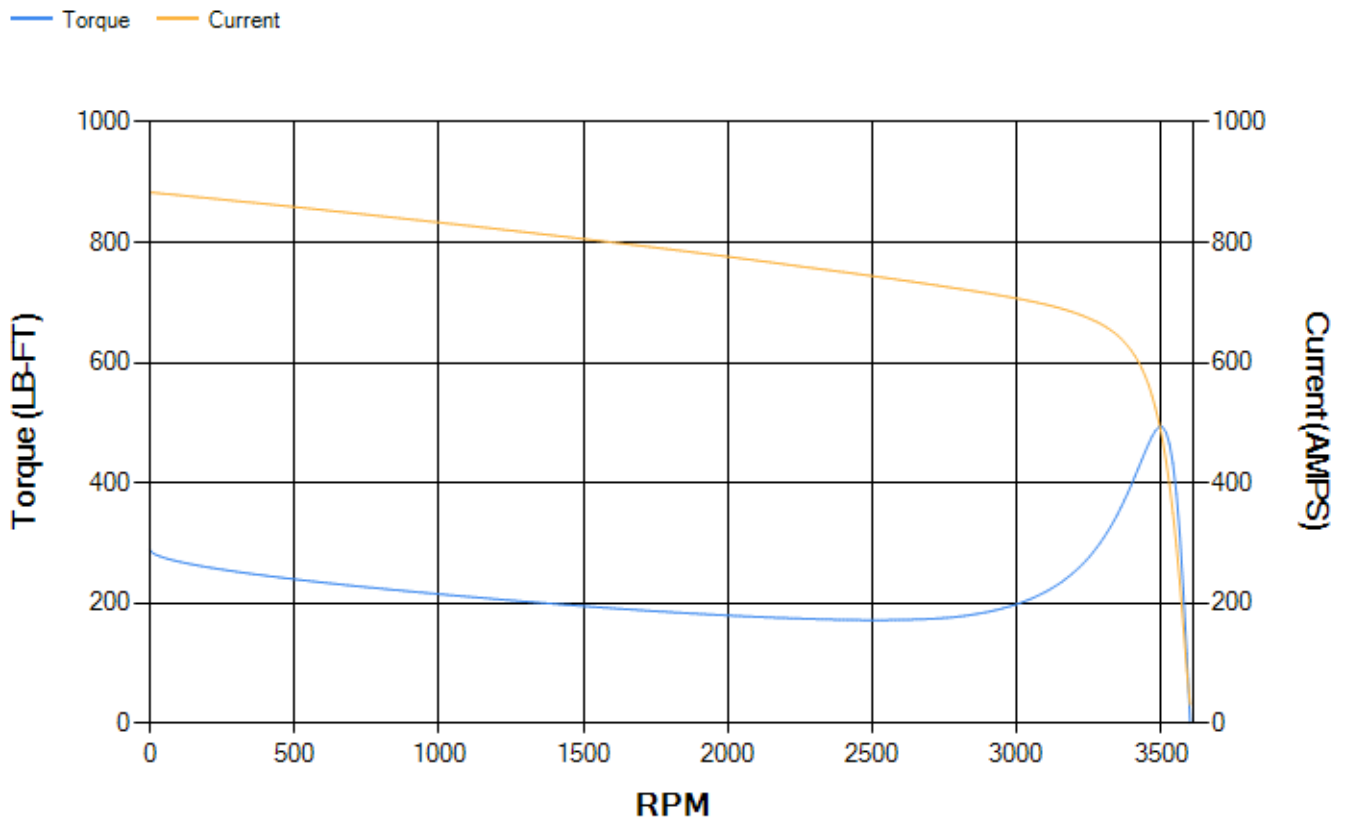
LOAD %	125.0	115.0	100.0	75.0	50.0	25.0	0.0
% EFF	94.94	95.06	95.35	95.01	94.12	90.51	0.00
% PF	91.15	91.28	91.2	90.02	85.8	70.47	9.21
AMPS	168.99	155.07	134.54	102.59	72.43	45.86	30.38

TORQ(FL)#FT	183.33	TORQ(LR)%FL	157.73	TORQ(BD)%FL	269.19
AMPS(LR)	883.37	PF AT START	0.22		

This motor is capable of two cold or one hot start with a maximum connected load inertia of 598 Lb-Ft Sq (25.18 Kg-meter Sq)at 100% voltage, where the load torque varies with the square of the speed. Acceleration time with maximum inertia and the above load type is 46 seconds. Safe stall time at 100% voltage is 88 seconds cold, 55 seconds hot. Rotor inertia is 31.01 Lb-Ft Sq (1.31 Kg-meter Sq).

Open Circuit A-C:	2.094	Short Circuit D-C:	0.039
Short Circuit A-C:	0.075	X/R Ratio:	14.877
Stator Slots:	48	Rotor Slots:	38

Speed Torque Current Curve (First Connection, First Speed)

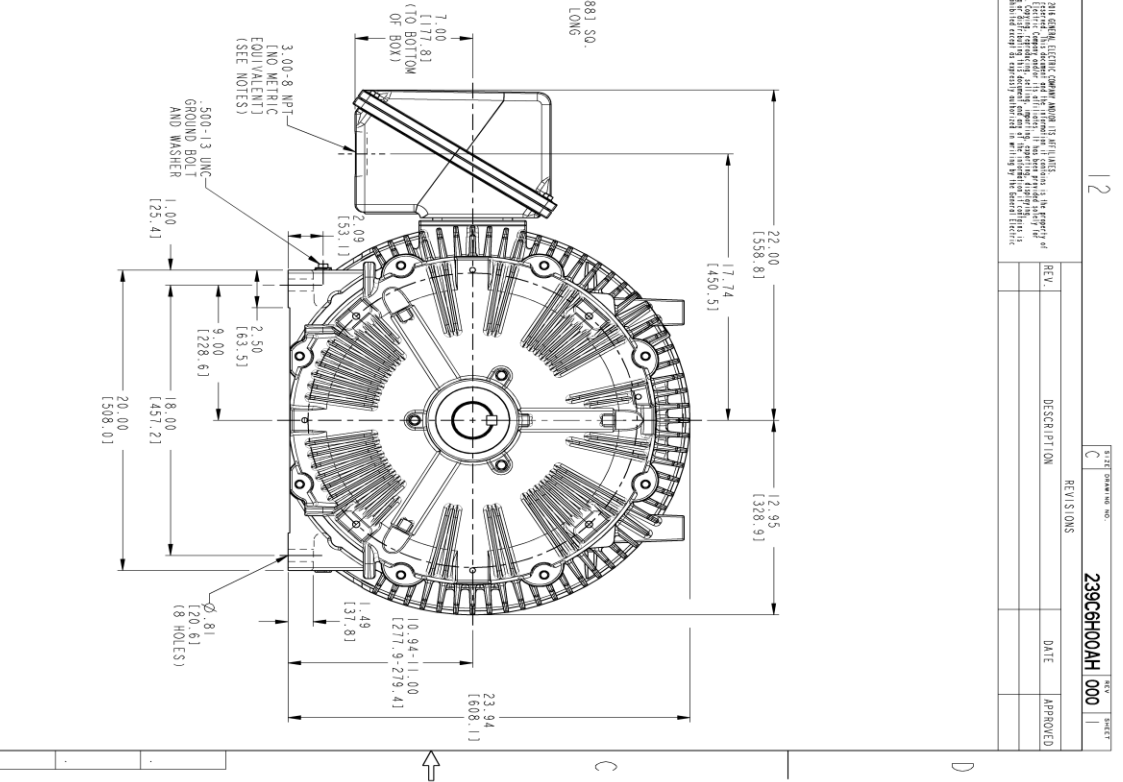
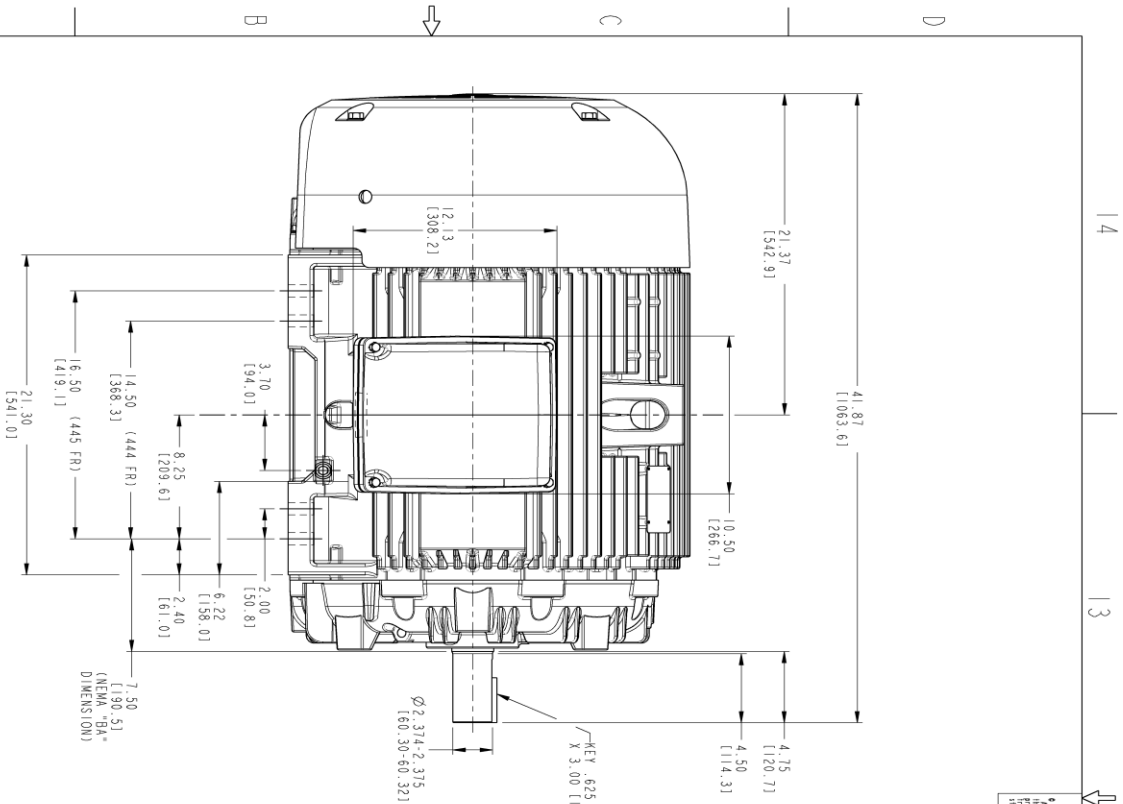


Marks:

SOLID MODEL: 239C6H00AH



THIRD ANGLE PROJECTION



- NOTES:
1. CONDUIT BOX MAY BE PLACED WITH THE ENTRANCE DOWN, UP OR ON EITHER SIDE.
 2. F-1 ASSEMBLY AS SHOWN.
 3. F-2 ASSEMBLY HAS CONDUIT BOX ON OPPOSITE SIDE.
 4. BRACKETED DIMENSIONS ARE METRIC (MILLIMETERS).

© COPYRIGHT 2021 GEORGE A. ERICKSON, ELECTRIC COMPANY, ALL RIGHTS RESERVED. ALL OTHER PATENT RIGHTS, TRADEMARKS AND/OR SERVICE MARKS ARE THE PROPERTY OF THEIR RESPECTIVE OWNERS. GEORGE A. ERICKSON, ELECTRIC COMPANY, 10000 W. 10TH AVENUE, DENVER, CO 80231. GEORGE A. ERICKSON, ELECTRIC COMPANY, IS NOT RESPONSIBLE FOR ANY ERRORS OR OMISSIONS IN THIS DRAWING. THE USER SHALL BE RESPONSIBLE FOR VERIFYING THE DIMENSIONS AND SPECIFICATIONS OF ALL PARTS AND MATERIALS USED IN THE CONSTRUCTION OF THE EQUIPMENT.

REV.	DESCRIPTION	DATE	APPROVED

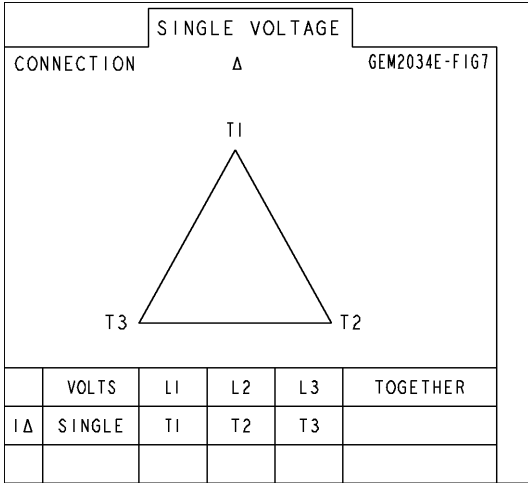
SIGNATURES		DATE	
MODEL	5KS444SAA118YQK	DATE	07/18/18
DESIGN	BHARTI	DATE	07/18/18
CHECKED	VJAY	DATE	07/18/18
ENGINEER	SUDHAR	DATE	07/18/18
QUALITY	BHARTI	DATE	07/18/18
ISSUED	BHARTI	DATE	07/18/18
SCALE: 0.200		REF: 239C6H00AH	
DISTRIBUTION: MMP		SHEET 1 OF 1	

GE
POWER CONVERSION

OUTLINE
444/445TS TERC
700 CU IN CONDUIT BOX, GROUND PAD
239C6H00AH

Marks:

Connection Diagram
GEM2034E-FIG7



End shield Assembly		
Part Description	DE Side Part#	ODE Side Part#
End Shield		
Bearing		
Slinger/Inproseal		

Fan & Fan Cover Assembly	
Part Description	Part#
Fan	
Fan Cover	

Conduit & Accessories Box Assembly	
Part Description	Part#
Conduit Box	

Mechanical Accessories	
Part Description	Part#
Brake	
Tachometer	

