



**GE INDUSTRIAL MOTORS**  
a **WOLONG** company

# Product Technical Information

June 25, 2020

Data shown is for the current revision model #. Ensure your nameplate model # matches.

<b>Model Number:</b>	<b>5KS324XAA354D</b>
<b>Catalog Number:</b>	<b>M9520</b>
<b>Instruction Manual:</b>	GEI-56128
<b>Connection Diagram:</b>	GEM2034E-FIG7
<b>Outline Drawing:</b>	239C6005DE

## Accessory Connection Diagrams

<b>Bearing Thermocouple:</b>	None	<b>Heater:</b>	None
<b>RTD:</b>	None	<b>Thermistor:</b>	None
<b>Thermostat:</b>	None	<b>Winding Thermocouple:</b>	None
<b>Bearing RTD:</b>	None		

## Table of Contents

Specification	01
Performance Characteristics	02
Outline Drawing	03
Connection Drawing(s)	04
Spare parts	05

Marks:

<b>MODEL NUMBER:</b>	<b>5KS324XAA354D</b>	<b>Estimated Weight:</b>	660 Lbs
<b>Outline Drawing:</b>	239C6005DE	<b>Time Rating:</b>	CONT
<b>Connection Diagram:</b>	GEM2034E-FIG7	<b>Enclosure:</b>	TEFC
<b>Instruction Book:</b>	GEI-56128	<b>Encl Construction:</b>	841
<b>Design Code:</b>	32BD3099A	<b>Ambient Max(°C):</b>	40
<b>Type:</b>	KS	<b>Alt Ambient Max(°C):</b>	--
<b>Frame:</b>	324TC	<b>Insulation Class:</b>	H
<b>Phases:</b>	3	<b>NEMA Design:</b>	B
<b>Poles:</b>	6	<b>Nominal Efficiency:</b>	93.0 %
<b>Output Power:</b>	25HP 18.5KW	<b>Guaranteed Efficiency:</b>	92.4 %
<b>RPM:</b>	1180	<b>3/4 Load Efficiency:</b>	93.4 %
<b>Voltage:</b>	460	<b>KVA Code:</b>	G
<b>Hertz:</b>	60	<b>Max KVAR:</b>	10.3
<b>Amps - FL:</b>	32.1	<b>Power Factor:</b>	78.5
<b>Service Factor:</b>	1.15	<b>Bearing - DE:</b>	6312ZC3
<b>Alt Service Factor:</b>	--	<b>Bearing - ODE:</b>	6312ZC3

Enclosure is Totally Enclosed Fan-Cooled

---

Stamped Nameplate Notes:

IEEE-STD-841-2009

DE BRG 60BC03JP30, ODE BRG 60BC03JP30

STAMP NP249A5564P051 AS BELOW:

MODEL:5KS324XAA354D S/N: XXX

CSA CERTIFIED CSA09.2216219 FOR EX NA IIC 200 C GC

CL 1 ZONE2 AEX NA IIC 200C;CL 1 DIV2 GRP ABCD 200C

IN -25C <= AMB <= 40C, 1.0 SF ON SINE-WAVE PWR

SURF TEMP 200C AT 1.15SF ON SINE-WAVE PWR

OR 200C VT OR 200C CT OR 200C CHP PWM CONTROL

ALTERNATE RATING FOR PWM CONTROL 1.0SF 40C AMB

VT 0-60 HZ, CT 3-60 HZ, CHP 60-90 HZ.



**Additional Information:**

6P - T EXTN  
PAINTED FRAME ID & SHAFT,  
FAN COVER INSIDE & ODE E/S OUTSIDE  
C FACE ON DE  
346 CU IN - 3.00" NPT  
INPRO SEAL BOTH ENDS  
OIL RESISTANT SLEEVING ON LEADS  
.0015" TIR SHAFT RUNOUT  
ROUTINE TEST REPORT AND 5 POINT VIBRATION TEST  
REPORT INCLUDED IN C/B  
COPPER WASHER UNDER HEADS OF BEARING CAP BOLTS,  
APPLY TITE-SEAL (A50CD427A) ON BEARING CAP SCREWS,  
RABBETS AND PLUG THREADS.  
ROUND FRAME  
GROUND PAD  
VERTICAL MOUNT SHAFT DOWN WITH DRIP COVER



**Performance Characteristics**

1st Winding 1st Connection

**Design: 32BD3099A**

**Marks:**

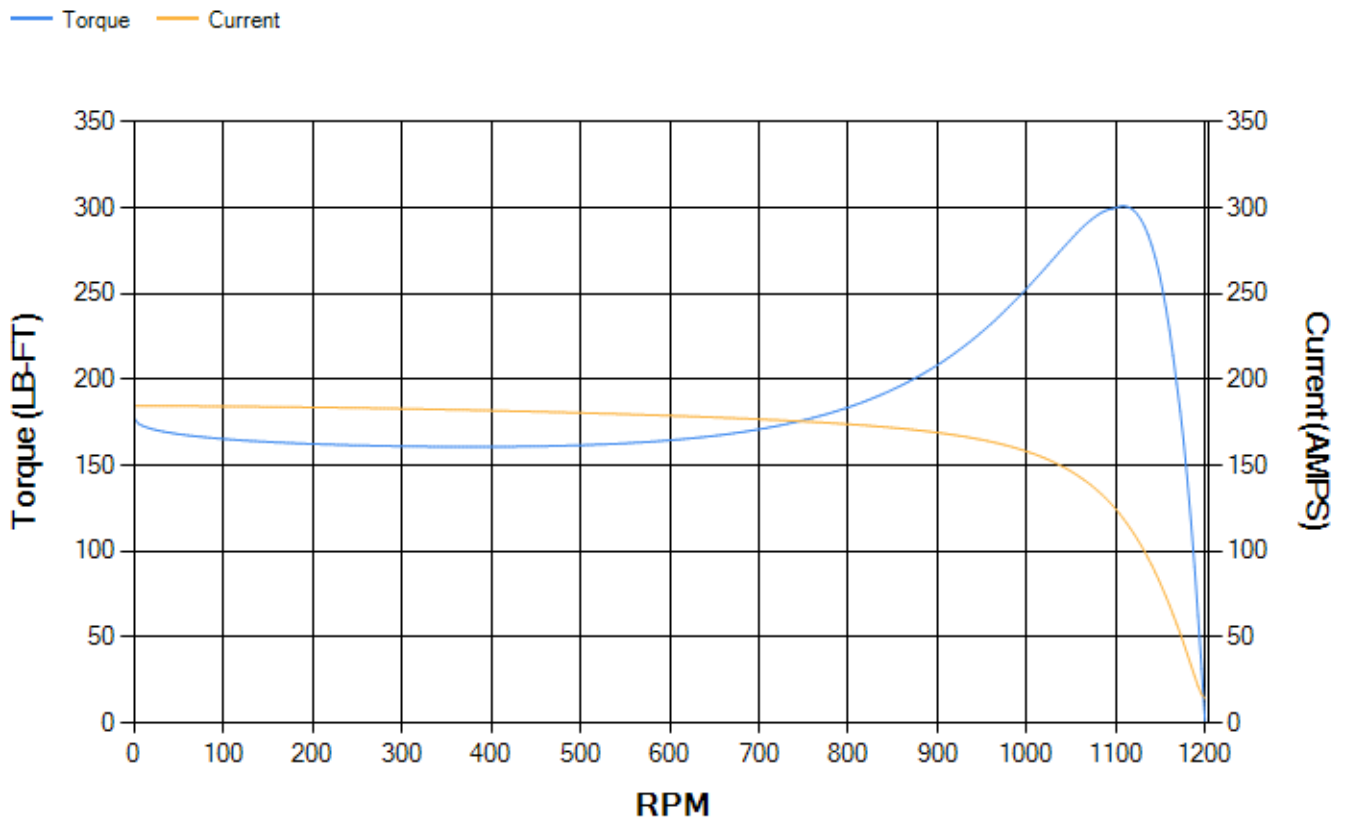
LOAD %	125.0	115.0	100.0	75.0	50.0	25.0	0.0
% EFF	92.2	92.56	93.21	93.38	92.92	89.56	0.00
% PF	81	80.3	78.6	73.26	62.21	40.3	4
AMPS	39.16	36.2	31.92	25.65	20.24	16.21	14.32

<b>TORQ(FL)#FT</b>	111.19	<b>TORQ(LR)%FL</b>	159.54	<b>TORQ(BD)%FL</b>	268.46
<b>AMPS(LR)</b>	184.74	<b>PF AT START</b>	0.33		

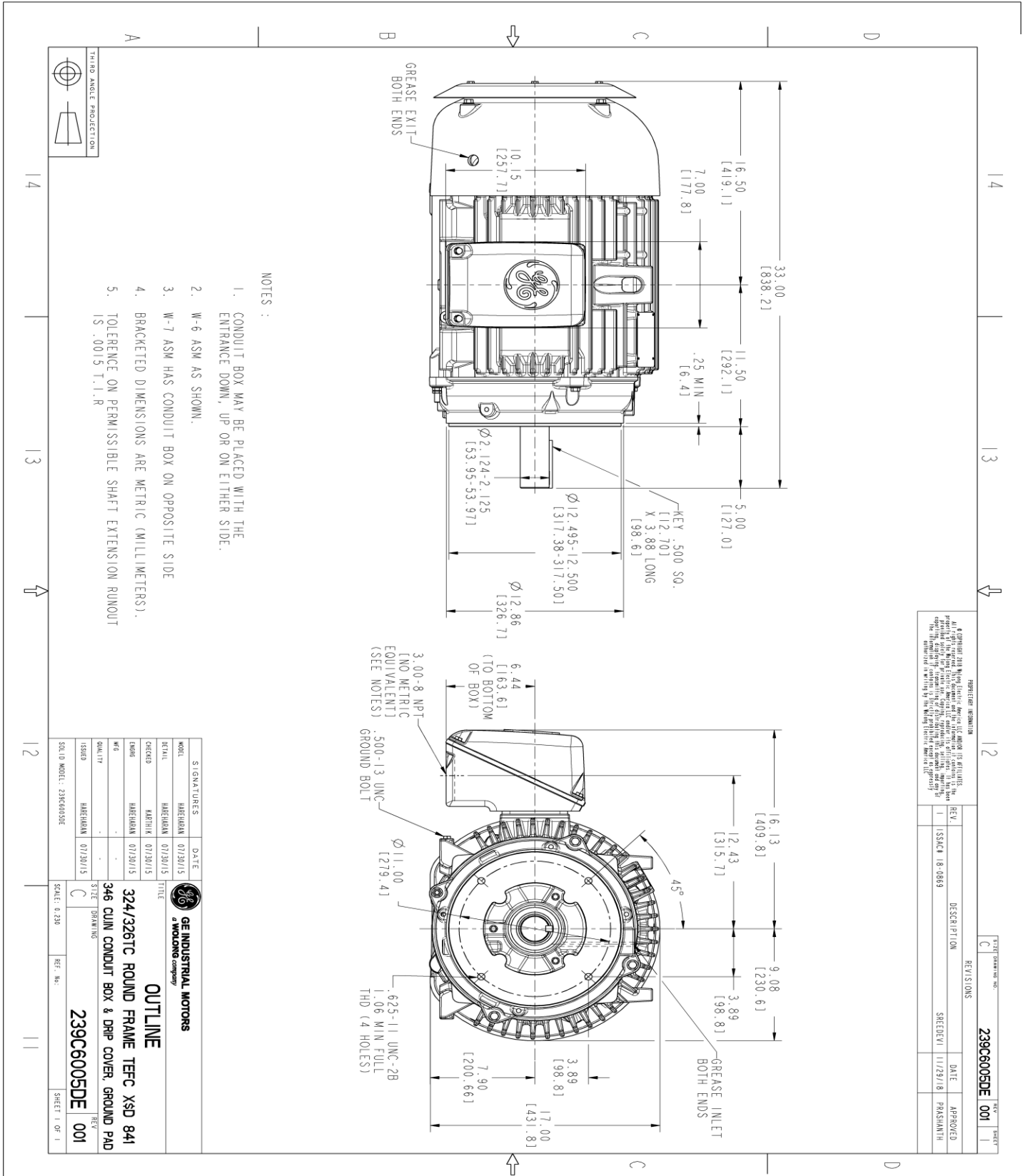
This motor is capable of two cold or one hot start with a maximum connected load inertia of 2445 Lb-Ft Sq (102.93 Kg-meter Sq)at 100% voltage, where the load torque varies with the square of the speed. Acceleration time with maximum inertia and the above load type is 62 seconds. Safe stall time at 100% voltage is 116 seconds cold, 75 seconds hot. Rotor inertia is 8.87 Lb-Ft Sq (0.37 Kg-meter Sq).

<b>Open Circuit A-C:</b>	0.34	<b>Short Circuit D-C:</b>	0.018
<b>Short Circuit A-C:</b>	0.022	<b>X/R Ratio:</b>	6.623
<b>Stator Slots:</b>	54	<b>Rotor Slots:</b>	40

**Speed Torque Current Curve (First Connection, First Speed)**



Marks:



REGISTRATION INFORMATION

© COPYRIGHT 2018 GE Global Energy Services LLC. ALL RIGHTS RESERVED. No part of this publication may be reproduced, stored in a retrieval system, or transmitted, in any form or by any means, without the prior written permission of GE Global Energy Services LLC. The information contained herein is the property of GE Global Energy Services LLC and is confidential. It is intended for use only by the individual named in the title of this drawing.

REV.	DESCRIPTION	DATE	APPROVED
1	ISSUE 18-0869	11/29/18	PARSHANTH

SHEET DRAWING NO. **239C6005DE 001**

REV. 1

SIGNATURES	DATE	TITLE
HAERHMAN	07/20/15	GE INDUSTRIAL MOTORS
HAERHMAN	07/20/15	DESIGN
HAERHMAN	07/20/15	ENGINEER
HAERHMAN	07/20/15	QUALITY
HAERHMAN	07/20/15	ISSUED

**324/326TC ROUND FRAME TEFC XSD 841**

**346 CUM CONDUIT BOX & DRIP COVER, GROUND PAD**

**239C6005DE**

SCALE: 0.250

REF. NO.

SHEET 1 OF 1

Marks:

**Connection Diagram**  
**GEM2034E-FIG7**



End shield Assembly		
Part Description	DE Side Part#	ODE Side Part#
End Shield	115E4203AA1	115E4200LA1
Bearing	235A2509AS01	235A2509AS01
Slinger/Inproseal	235A4575GS2	235A4575GS2

Fan & Fan Cover Assembly	
Part Description	Part#
Fan	159C7000G01
Fan Cover	128D6800AB1

Conduit & Accessories Box Assembly	
Part Description	Part#
Conduit Box	149C4429AA2

Mechanical Accessories	
Part Description	Part#
Brake	
Tachometer	

