



**GE INDUSTRIAL MOTORS**  
a **WOLONG** company

# Product Technical Information

June 24, 2020

Data shown is for the current revision model #. Ensure your nameplate model # matches.

<b>Model Number:</b>	<b>5KS324XAA1079D2</b>
<b>Catalog Number:</b>	<b>M9525</b>
<b>Instruction Manual:</b>	GEI-56128
<b>Connection Diagram:</b>	GEM2034E-FIG7
<b>Outline Drawing:</b>	239C6005DD

## Accessory Connection Diagrams

<b>Bearing Thermocouple:</b>	None	<b>Heater:</b>	None
<b>RTD:</b>	None	<b>Thermistor:</b>	None
<b>Thermostat:</b>	None	<b>Winding Thermocouple:</b>	None
<b>Bearing RTD:</b>	None		

## Table of Contents

Specification	01
Performance Characteristics	02
Outline Drawing	03
Connection Drawing(s)	04
Spare parts	05

Marks:

**MODEL NUMBER:** 5KS324XAA1079D2  
**Outline Drawing:** 239C6005DD  
**Connection Diagram:** GEM2034E-FIG7  
**Instruction Book:** GEI-56128  
**Design Code:** 32BD0110A  
**Type:** KS  
**Frame:** 324TSC  
**Phases:** 3  
**Poles:** 2  
**Output Power:** 40HP 29.6KW  
**RPM:** 3565  
**Voltage:** 460  
**Hertz:** 60  
**Amps - FL:** 48.8  
**Service Factor:** 1.15  
**Alt Service Factor:** --

**Estimated Weight:** 620 Lbs  
**Time Rating:** CONT  
**Enclosure:** TEFC  
**Encl Construction:** 841  
**Ambient Max(°C):** 40  
**Alt Ambient Max(°C):** --  
**Insulation Class:** H  
**NEMA Design:** B  
**Nominal Efficiency:** 93.0 %  
**Guaranteed Efficiency:** 92.4 %  
**3/4 Load Efficiency:** 92.8 %  
**KVA Code:** G  
**Max KVAR:** 15.4  
**Power Factor:** 82.5  
**Bearing - DE:** 6312ZC3  
**Bearing - ODE:** 6312ZC3

**Enclosure is Totally Enclosed Fan-Cooled**

---

Stamped Nameplate Notes:

IEEE-STD-841-2009

DE BRG 60BC03JP30, ODE BRG 60BC03JP30

STAMP NP249A5564P051 AS BELOW:

MODEL:5KS324XAA1079D2 S/N: XXX

CSA CERTIFIED CSA09.2216219 FOR EX NA IIC 200 C GC

CL 1 ZONE2 AEX NA IIC 200C;CL 1 DIV2 GRP ABCD 200C

IN -25C <= AMB <= 40C, 1.0 SF ON SINE-WAVE PWR

SURF TEMP 260 C AT 1.15SF ON SINE-WAVE PWR

OR 200 C VT OR 230 C CT OR 200 C CHP PWM CONTROL

ALTERNATE RATING FOR PWM CONTROL 1.0SF 40C AMB

VT 0-60 HZ, CT 8.6-60 HZ, CHP 60-75 HZ.



**Additional Information:**

2P - TS EXTN  
PAINTED FRAME ID & SHAFT,  
FAN COVER INSIDE & ODE E/S OUTSIDE  
C FACE ON DE  
346 CU IN - 3.00" NPT  
INPRO SEAL BOTH ENDS  
OIL RESISTANT SLEEVING ON LEADS  
.0015" TIR SHAFT RUNOUT  
ROUTINE TEST REPORT AND 5 POINT VIBRATION TEST  
REPORT INCLUDED IN C/B  
COPPER WASHER UNDER HEADS OF BEARING CAP BOLTS,  
APPLY TITE-SEAL (A50CD427A) ON BEARING CAP SCREWS,  
RABBETS AND PLUG THREADS.  
ROUND FRAME  
GROUND PAD  
VERTICAL MOUNT SHAFT DOWN WITH DRIP COVER



**Performance Characteristics**

1st Winding 1st Connection

**Design: 32BD0110A**

**Marks:**

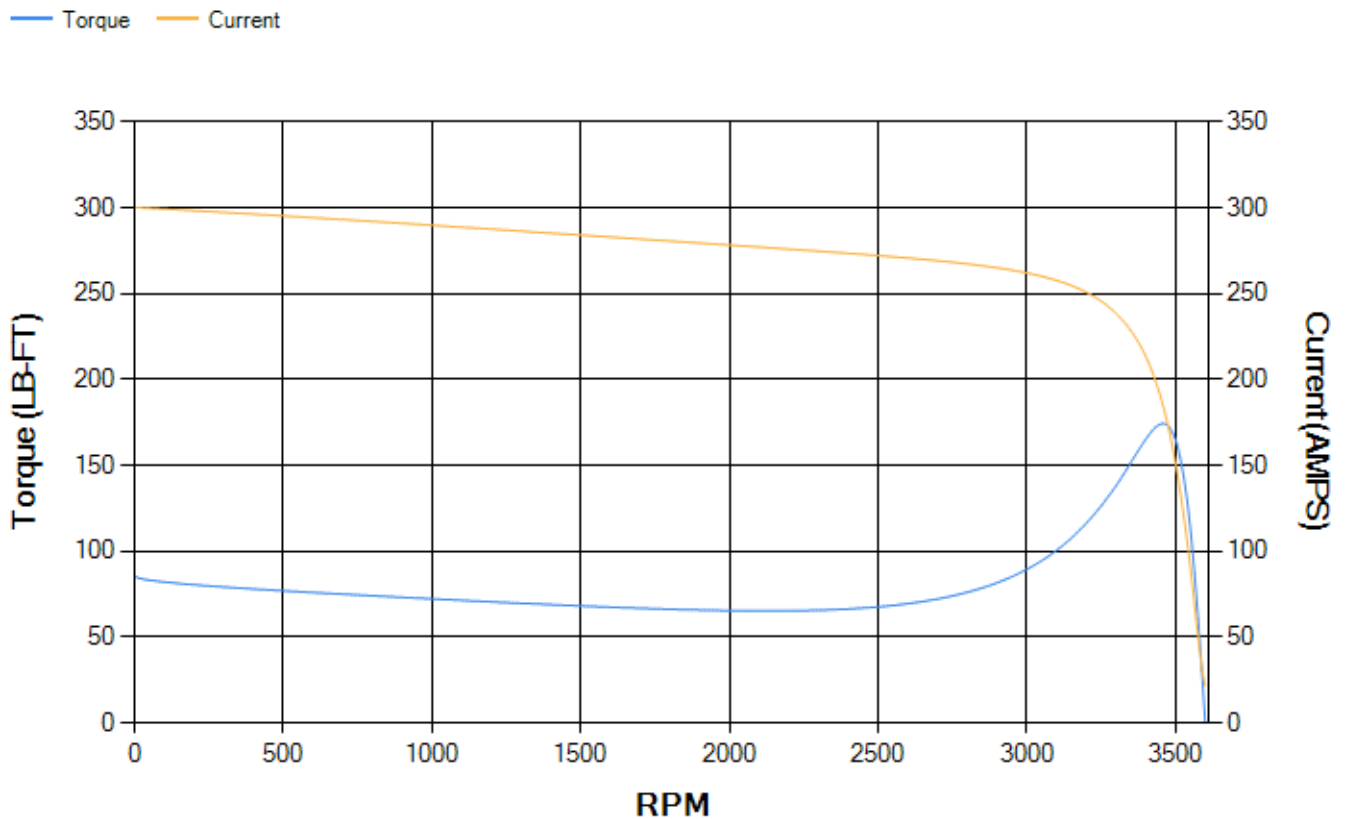
LOAD %	125.0	115.0	100.0	75.0	50.0	25.0	0.0
% EFF	92.47	92.67	93.06	92.79	91.69	86.97	0.00
% PF	84.8	84.01	82.26	76.97	66.05	43.76	5.58
AMPS	59.68	55.3	48.84	39.31	30.91	24.59	21.61

<b>TORQ(FL)#FT</b>	58.88	<b>TORQ(LR)%FL</b>	145.5	<b>TORQ(BD)%FL</b>	296.11
<b>AMPS(LR)</b>	300.43	<b>PF AT START</b>	0.29		

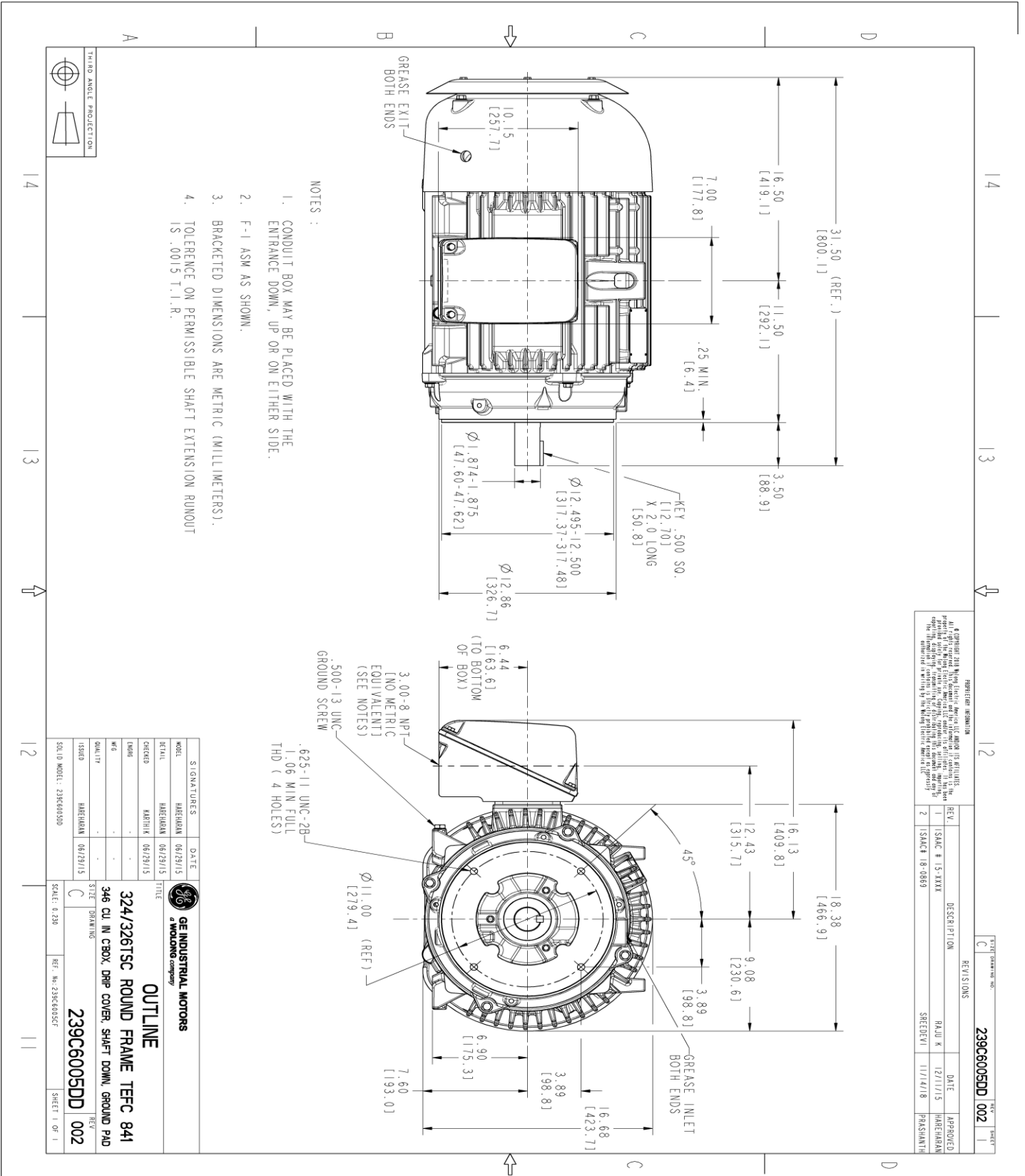
This motor is capable of two cold or one hot start with a maximum connected load inertia of 117 Lb-Ft Sq (4.93 Kg-meter Sq)at 100% voltage, where the load torque varies with the square of the speed. Acceleration time with maximum inertia and the above load type is 23 seconds. Safe stall time at 100% voltage is 52 seconds cold, 27 seconds hot. Rotor inertia is 3.11 Lb-Ft Sq (0.13 Kg-meter Sq).

<b>Open Circuit A-C:</b>	0.598	<b>Short Circuit D-C:</b>	0.017
<b>Short Circuit A-C:</b>	0.041	<b>X/R Ratio:</b>	6.428
<b>Stator Slots:</b>	48	<b>Rotor Slots:</b>	38

**Speed Torque Current Curve (First Connection, First Speed)**



Marks:



NOTES :

1. CONDUIT BOX MAY BE PLACED WITH THE ENTRANCE DOWN, UP OR ON EITHER SIDE.
2. F-1 ASM AS SHOWN.
3. BRACKETED DIMENSIONS ARE METRIC (MILLIMETERS).
4. TOLERANCE ON PERMISSIBLE SHAFT EXTENSION RUNOUT IS .0015 T.I.R.

REVISION INFORMATION

REV.	DESCRIPTION	DATE	APPROVED
1	ISAC # 15-XXXX	12/11/15	HAREHRAM
2	ISAC# 18-0869	11/14/18	PRASHANTH

SIGNATURES		DATE	
MODEL	HAREHRAM	06/29/15	
DESIGNED BY	HAREHRAM	06/29/15	
CHECKED BY	KARTHIK	06/29/15	
DRAWN BY	-	-	-
DATE	-	-	-
QUALITY	-	-	-
ISSUED BY	HAREHRAM	06/29/15	
SCALE	0.250	REF. NO.	239C6005CF
<b>GE INDUSTRIAL MOTORS</b> a WOLONG company		<b>OUTLINE</b> 324/326TSC ROUND FRAME TFFC 841 346 CU IN CBOX, DRP COVER, SHAF DOWN, GROUND PAD	
239C6005DD REV. 102		SHEET 1 OF 1	

Marks:

**Connection Diagram**  
**GEM2034E-FIG7**



End shield Assembly		
Part Description	DE Side Part#	ODE Side Part#
End Shield	115E4203AA1	115E4200LA1
Bearing	235A2509AS01	235A2509AS01
Slinger/Inproseal	235A4575GS2	235A4575GS2

Fan & Fan Cover Assembly	
Part Description	Part#
Fan	159C6700G02
Fan Cover	128D6800AB1

Conduit & Accessories Box Assembly	
Part Description	Part#
Conduit Box	149C4429AA2

Mechanical Accessories	
Part Description	Part#
Brake	
Tachometer	

