



GE INDUSTRIAL MOTORS
a **WOLONG** company

Product Technical Information

May 8, 2021

Data shown is for the current revision model #. Ensure your nameplate model # matches.

Model Number:	5KS326XAA1009D3
Catalog Number:	M9527
Instruction Manual:	GEI-56128
Connection Diagram:	GEM2034E-FIG7
Outline Drawing:	239C6005DD

Accessory Connection Diagrams

Bearing Thermocouple:	None	Heater:	None
RTD:	None	Thermistor:	None
Thermostat:	None	Winding Thermocouple:	None
Bearing RTD:	None		

Table of Contents

Specification	01
Performance Characteristics	02
Outline Drawing	03
Connection Drawing(s)	04
Spare parts	05

Marks:

MODEL NUMBER:	5KS326XAA1009D3	Estimated Weight:	690 Lbs
Outline Drawing:	239C6005DD	Time Rating:	CONT
Connection Diagram:	GEM2034E-FIG7	Enclosure:	TEFC
Instruction Book:	GEI-56128	Encl Construction:	841
Design Code:	32BD0154A	Ambient Max(°C):	40
Type:	KS	Alt Ambient Max(°C):	--
Frame:	326TSC	Insulation Class:	H
Phases:	3	NEMA Design:	B
Poles:	2	Nominal Efficiency:	93.0 %
Output Power:	50HP 37KW	Guaranteed Efficiency:	92.4 %
RPM:	3565	3/4 Load Efficiency:	--
Voltage:	460	KVA Code:	G
Hertz:	60	Max KVAR:	14.4
Amps - FL:	57.8	Power Factor:	87.0
Service Factor:	1.15	Bearing - DE:	6312ZC3
Alt Service Factor:	--	Bearing - ODE:	6312ZC3

Enclosure is Totally Enclosed Fan-Cooled

Stamped Nameplate Notes:

IEEE-STD-841-2009

DE BRG 60BC03JP30, ODE BRG 60BC03JP30

STAMP NP249A5564P051 AS BELOW:

MODEL:5KS326XAA1009D3 S/N: XXX

CSA CERTIFIED CSA09.2216219 FOR EX NA IIC 200 C GC

CL 1 ZONE2 AEX NA IIC 200C;CL 1 DIV2 GRP ABCD 200C

IN -25C <= AMB <= 40C, 1.0 SF ON SINE-WAVE PWR

SURF TEMP 230C AT 1.15SF ON SINE-WAVE PWR

OR 200 C VT OR 230 C CT OR 200 C CHP PWM CONTROL

ALTERNATE RATING FOR PWM CONTROL 1.0SF 40C AMB

VT 0-60 HZ, CT 10-60 HZ, CHP 60-75 HZ.



Additional Information:

2P - TS EXTN
PAINTED FRAME ID & SHAFT,
FAN COVER INSIDE & ODE E/S OUTSIDE
C FACE ON DE
C/BOX 346 CU IN - 3.00" NPT
INPRO SEAL BOTH ENDS
OIL RESISTANT SLEEVING ON LEADS
.0015" TIR SHAFT RUNOUT
ROUTINE TEST REPORT AND 5 POINT VIBRATION TEST
REPORT INCLUDED IN C/B
COPPER WASHER UNDER HEADS OF BEARING CAP BOLTS,
APPLY TITE-SEAL (A50CD427A) ON BEARING CAP SCREWS,
RABBETS AND PLUG THREADS.
ROUND FRAME
GROUND PAD
VERTICAL MOUNT SHAFT DOWN WITH DRIP COVER



Performance Characteristics

1st Winding 1st Connection

Design: 32BD0154A

Marks:

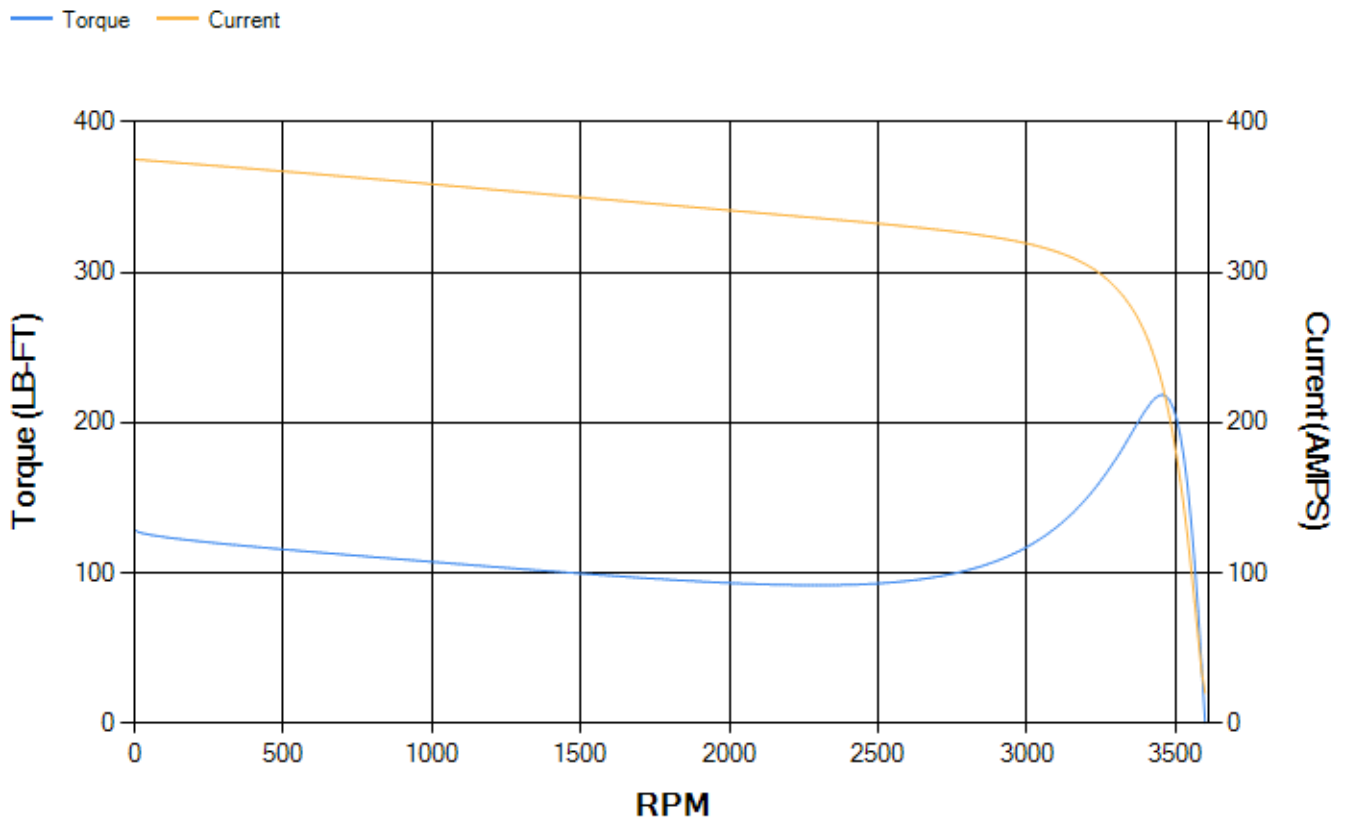
LOAD %	125.0	115.0	100.0	75.0	50.0	25.0	0.0
% EFF	93.5	93.72	94.17	94.06	93.36	89.79	0.00
% PF	88.39	87.98	86.94	83.36	74.81	53.21	5.69
AMPS	70.78	65.27	57.09	44.76	33.5	24.49	20.03

TORQ(FL)#FT	73.6	TORQ(LR)%FL	174.95	TORQ(BD)%FL	296.67
AMPS(LR)	375.25	PF AT START	0.31		

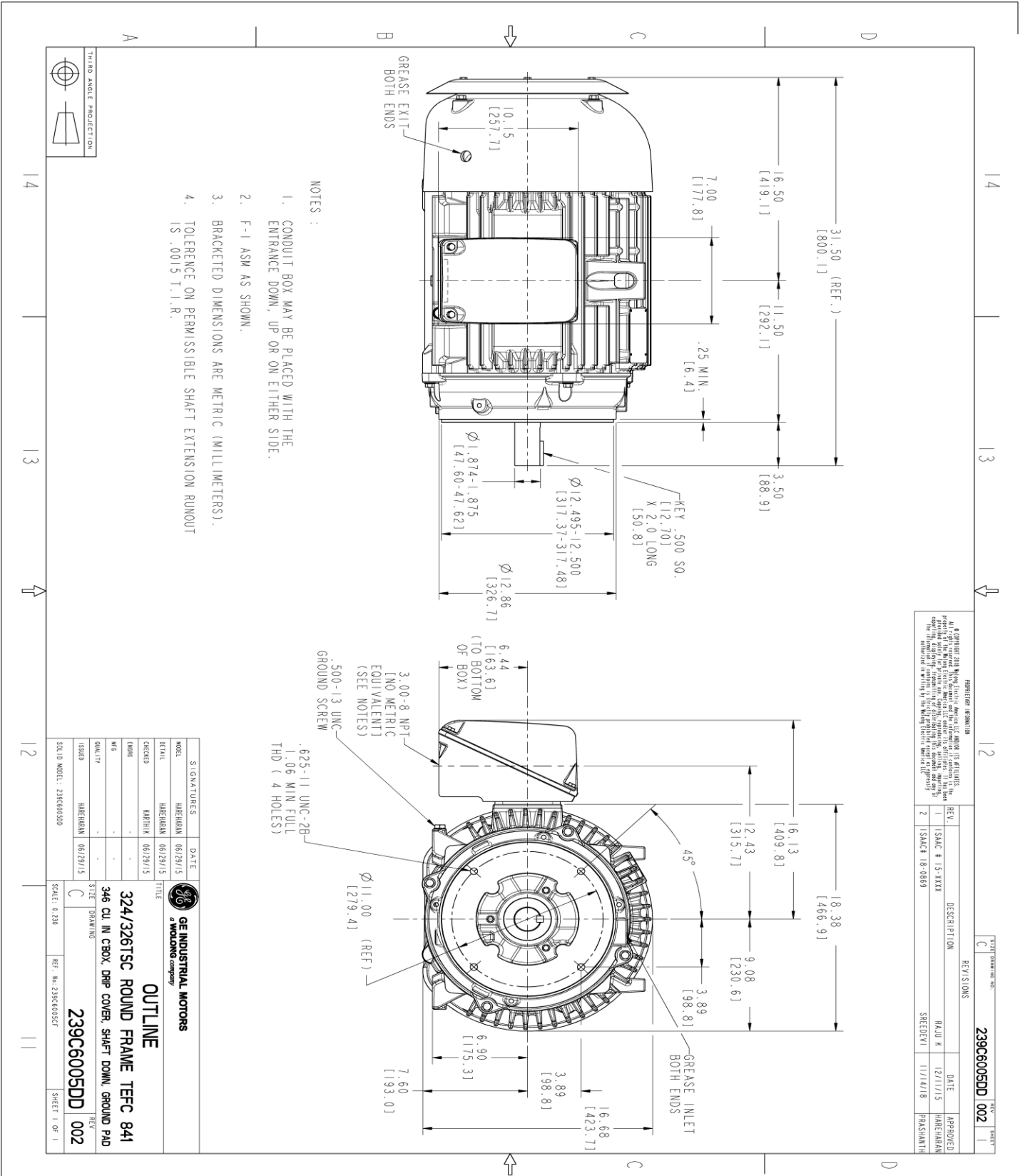
This motor is capable of two cold or one hot start with a maximum connected load inertia of 156 Lb-Ft Sq (6.57 Kg-meter Sq)at 100% voltage, where the load torque varies with the square of the speed. Acceleration time with maximum inertia and the above load type is 21 seconds. Safe stall time at 100% voltage is 46 seconds cold, 25 seconds hot. Rotor inertia is 4.57 Lb-Ft Sq (0.19 Kg-meter Sq).

Open Circuit A-C:	0.79	Short Circuit D-C:	0.019
Short Circuit A-C:	0.04	X/R Ratio:	7.021
Stator Slots:	48	Rotor Slots:	38

Speed Torque Current Curve (First Connection, First Speed)



Marks:



REVISION INFORMATION		REV. DATE	
1	ISAC # 15-XXXX	RAJU K	12/11/15
2	ISAC # 18-0869	SREDEVI	11/14/18

SIGNATURES	DATE	TITLE
MODEL: HAREHRAN 06/29/15		
DESIGN: HAREHRAN 06/29/15		
CHECKED: KARTHIK 06/29/15		
DATE: -		
BY: -		
QUALITY: -		
ISSUED: HAREHRAN 06/29/15		

GE INDUSTRIAL MOTORS
a WOLONG company

OUTLINE

324/326TSC ROUND FRAME TFC 841
346 CU IN CBOX, DRP COVER, SHFT DOWN, GROUND PAD

SCALE: 0.250 REF. NO: 239C6005CF

239C6005DD
REV: 002

SHEET 1 OF 1

Marks:

Connection Diagram
GEM2034E-FIG7



End shield Assembly		
Part Description	DE Side Part#	ODE Side Part#
End Shield	115E4203AA1	115E4200LA1
Bearing	235A2509AS01	235A2509AS01
Slinger/Inproseal	235A4575GS2	235A4575GS2

Fan & Fan Cover Assembly	
Part Description	Part#
Fan	159C6700G02
Fan Cover	128D6800AB1

Conduit & Accessories Box Assembly	
Part Description	Part#
Conduit Box	149C4429AA2

Mechanical Accessories	
Part Description	Part#
Brake	
Tachometer	

