



GE INDUSTRIAL MOTORS
a **WOLONG** company

Product Technical Information

November 7, 2022

Data shown is for the current revision model #. Ensure your nameplate model # matches.

Model Number:	5KS364XAA187D4
Catalog Number:	M9529
Instruction Manual:	GEI-56128
Connection Diagram:	GEM2034E-FIG7
Outline Drawing:	239C6205CN

Accessory Connection Diagrams

Bearing Thermocouple:	None	Heater:	None
RTD:	None	Thermistor:	None
Thermostat:	None	Winding Thermocouple:	None
Bearing RTD:	None		

Table of Contents

Specification	01
Performance Characteristics	02
Outline Drawing	03
Connection Drawing(s)	04
Spare parts	05

Marks:

MODEL NUMBER:	5KS364XAA187D4
Outline Drawing:	239C6205CN
Connection Diagram:	GEM2034E-FIG7
Instruction Book:	GEI-56128
Design Code:	36BD0117A
Type:	KS
Frame:	364TSC
Phases:	3
Poles:	2
Output Power:	60HP 44.4KW
RPM:	3575
Voltage:	460
Hertz:	60
Amps - FL:	70.3
Service Factor:	1.15
Alt Service Factor:	--

Estimated Weight:	970 Lbs
Time Rating:	CONT
Enclosure:	TEFC
Encl Construction:	841
Ambient Max(°C):	40
Alt Ambient Max(°C):	--
Insulation Class:	H
NEMA Design:	B
Nominal Efficiency:	94.5 %
Guaranteed Efficiency:	94.1 %
3/4 Load Efficiency:	--
KVA Code:	G
Max KVAR:	19.4
Power Factor:	84.5
Bearing - DE:	6314ZZC3
Bearing - ODE:	6314ZZC3

Enclosure is Totally Enclosed Fan-Cooled

Stamped Nameplate Notes:

IEEE STD 841-2021

STAMP NP249A5564P051 AS BELOW:

MODEL:5KS364XAA187D4 S/N: XXX

CSA CERTIFIED CSA09.2216219 FOR EX NA IIC 200 C GC

CL 1 ZONE2 AEX NA IIC 200C;CL 1 DIV2 GRP ABCD 200C

IN -25C <= AMB <= 40C, 1.0 SF ON SINE-WAVE PWR

SURF TEMP 215 C AT 1.15SF ON SINE-WAVE PWR

OR 200 C VT OR 230 C CT OR ---C CHP PWM CONTROL

ALTERNATE RATING FOR PWM CONTROL 1.0SF 40C AMB

VT 0 - 60 HZ, CT 3-60 HZ, CHP -- HZ.



Additional Information:

2P - TS EXTN
C FACE ON DE
C/BOX 346 CU IN - 3.00" NPT
INPRO SEAL BOTH ENDS
OIL RESISTANT SLEEVING ON LEADS
.0015" TIR SHAFT RUNOUT
ROUND FRAME
GROUND PAD
VERTICAL MOUNT SHAFT DOWN WITH DRIP COVER
PAINTED FRAME ID & SHAFT,
FAN COVER INSIDE & ODE E/S OUTSIDE
ROUTINE TEST REPORT AND 5 POINT VIBRATION TEST
REPORT INCLUDED IN C/B
COPPER WASHER UNDER HEADS OF BEARING CAP BOLTS,
APPLY TITE-SEAL (A50CD427A) ON BEARING CAP SCREWS,
RABBETS AND PLUG THREADS.



Performance Characteristics

1st Winding 1st Connection

Design: 36BD0117A

Marks:

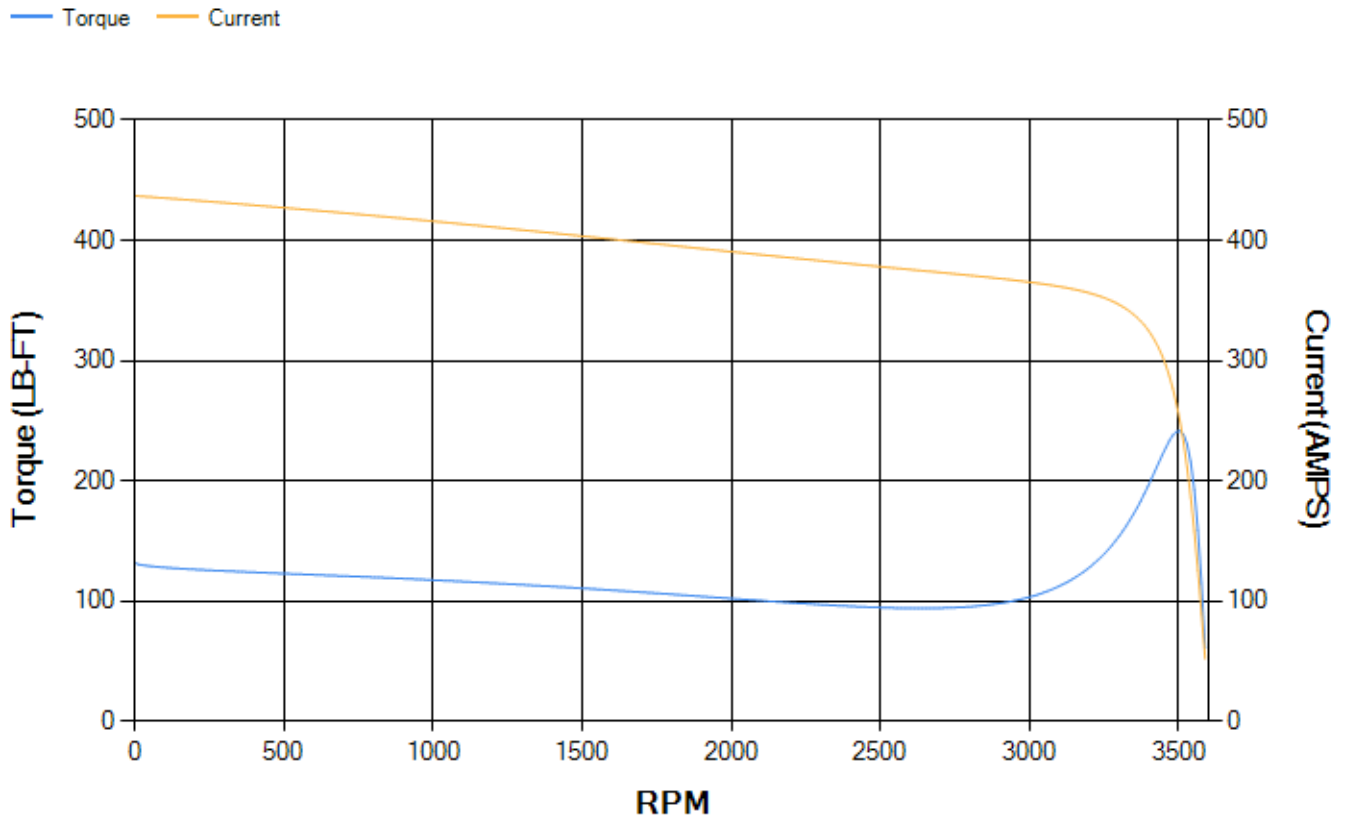
LOAD %	125.0	115.0	100.0	75.0	50.0	25.0	0.0
% EFF	94.24	94.41	94.79	94.59	93.84	90.34	0.00
% PF	86.22	85.73	84.5	80.34	70.83	48.62	4.71
AMPS	86.39	79.79	69.97	55.42	42.24	31.96	27.02

TORQ(FL)#FT	88.11	TORQ(LR)%FL	149.66	TORQ(BD)%FL	273.86
AMPS(LR)	437.11	PF AT START	0.3		

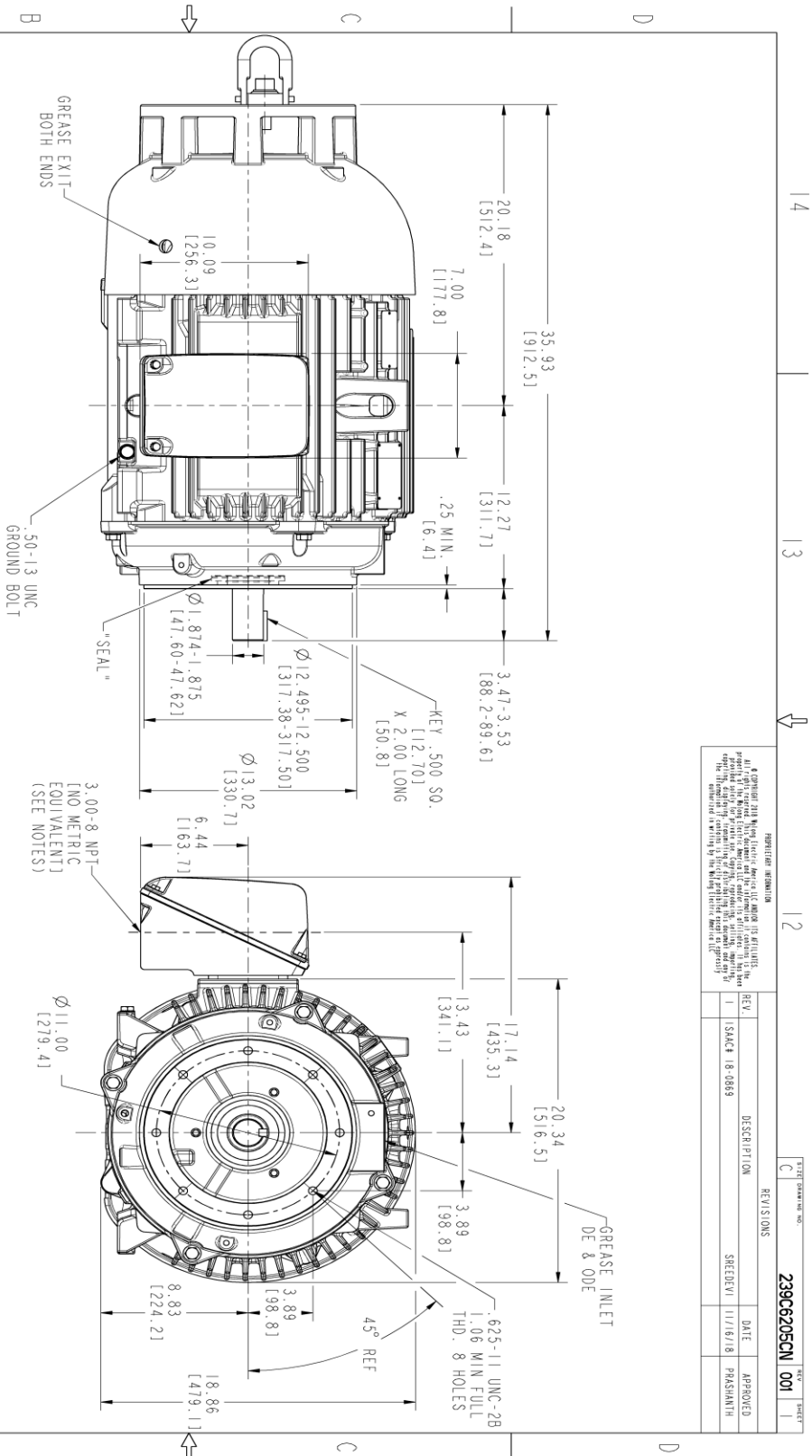
This motor is capable of two cold or one hot start with a maximum connected load inertia of 159 Lb-Ft Sq (6.69 Kg-meter Sq)at 100% voltage, where the load torque varies with the square of the speed. Acceleration time with maximum inertia and the above load type is 22 seconds. Safe stall time at 100% voltage is 46 seconds cold, 26 seconds hot. Rotor inertia is 6.96 Lb-Ft Sq (0.29 Kg-meter Sq).

Open Circuit A-C:	0.95	Short Circuit D-C:	0.023
Short Circuit A-C:	0.055	X/R Ratio:	8.805
Stator Slots:	48	Rotor Slots:	38

Speed Torque Current Curve (First Connection, First Speed)



Marks:



NOTES :

1. CONDUIT BOX MAY BE PLACED WITH THE ENTRANCE DOWN, UP OR ON EITHER SIDE.
2. F-1 ASW AS SHOWN
3. F-2 ASW HAS CONDUIT BOX ON OPPOSITE SIDE
4. DIMENSIONS ARE IN INCHES & BRACKETED DIMENSIONS ARE METRIC (MILLIMETERS).
5. TOLERANCE ON PERMISSIBLE SHAFT EXTENSION RUNOUT IS .0015 T. I. R

REVISION INFORMATION

REV.	DESCRIPTION	DATE	APPROVED
1	ISACH 18-0869	11/16/18	PRASHANTH

TITLE DRAWING NO. 239C6205CN 001

SIGNATURES	DATE
MODEL: LANRANIH 09/02/15	
REVIEW: LANRANIH 09/02/15	
CHECKED: KARTHIC 09/02/15	
DESIGN: KARTHIC 09/02/15	
DATE: 09/02/15	
QUALITY: LANRANIH 09/02/15	
ISSUED: LANRANIH 09/02/15	
SCALE: 0.250	
REF. NO: 239C620546	

GE INDUSTRIAL MOTORS
 a WOLONG company

OUTLINE

364/365TSC ROUND FRAME TFC XSD 841
 346 CU IN CBOX SHAFT DOWN, INPRO SEAL, RR GROUND

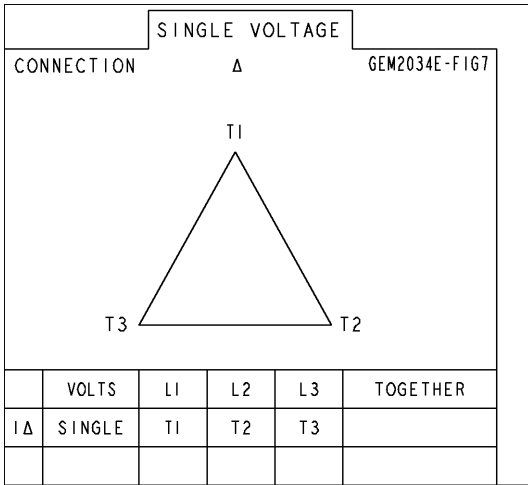
239C6205CN 001

SCALE: 0.250 REF. No: 239C620546 SHEET 1 OF 1



Marks:

Connection Diagram
GEM2034E-FIG7



End shield Assembly		
Part Description	DE Side Part#	ODE Side Part#
End Shield	115E4253AG1	115E4250LW1
Bearing	235A2516AF01	235A2516AF01
Slinger/Inproseal	235A4575GS3	235A4575GS3

Fan & Fan Cover Assembly	
Part Description	Part#
Fan	159C6700G02
Fan Cover	128D6811AB1

Conduit & Accessories Box Assembly	
Part Description	Part#
Conduit Box	149C4429AA2

Mechanical Accessories	
Part Description	Part#
Brake	
Tachometer	

