



GE INDUSTRIAL MOTORS
a **WOLONG** company

Product Technical Information

February 17, 2023

Data shown is for the current revision model #. Ensure your nameplate model # matches.

Model Number:	5KS444XAA373B
Catalog Number:	M9533
Instruction Manual:	GEI-56128
Connection Diagram:	GEM2034E-FIG7
Outline Drawing:	239C6600ZA

Accessory Connection Diagrams

Bearing Thermocouple:	None	Heater:	None
RTD:	None	Thermistor:	None
Thermostat:	None	Winding Thermocouple:	None
Bearing RTD:	None		

Table of Contents

Specification	01
Performance Characteristics	02
Outline Drawing	03
Connection Drawing(s)	04
Spare parts	05

Marks:

MODEL NUMBER:	5KS444XAA373B	Estimated Weight:	1880 Lbs
Outline Drawing:	239C6600ZA	Time Rating:	CONT
Connection Diagram:	GEM2034E-FIG7	Enclosure:	TEFC
Instruction Book:	GEI-56128	Encl Construction:	841
Design Code:	44BD3081B	Ambient Max(°C):	40
Type:	KS	Alt Ambient Max(°C):	--
Frame:	444T	Insulation Class:	H
Phases:	3	NEMA Design:	B
Poles:	6	Nominal Efficiency:	95.0 %
Output Power:	100HP 74KW	Guaranteed Efficiency:	94.5 %
RPM:	1190	3/4 Load Efficiency:	95.1 %
Voltage:	575	KVA Code:	G
Hertz:	60	Max KVAR:	36.4
Amps - FL:	97.3	Power Factor:	81.0
Service Factor:	1.15	Bearing - DE:	NU 318
Alt Service Factor:	--	Bearing - ODE:	6318ZC3

Enclosure is Totally Enclosed Fan-Cooled

Stamped Nameplate Notes:

IEEE-STD-841-2009
 ROLLER BEARING - FOR BELTED LOAD ONLY
 DE BRG 90RU03M, ODE BRG 90BC03JP3
 STAMP NP249A5564P051 AS BELOW:
 MODEL:5KS444XAA373B S/N: XXX
 CSA CERTIFIED CSA09.2216219 FOR EX NA IIC 200 C GC
 CL 1 ZONE2 AEX NA IIC 200C;CL 1 DIV2 GRP ABCD 200C
 IN -25C <= AMB <= 40C, 1.0 SF ON SINE-WAVE PWR
 SURF TEMP 200C AT 1.15SF ON SINE-WAVE PWR
 OR 200C VT OR 230C CT OR 200C CHP PWM CONTROL
 ALTERNATE RATING FOR PWM CONTROL 1.0SF 40C AMB
 VT 0 - 60 HZ, CT 6-60 HZ, CHP 60-90 HZ.



Additional Information:

6P - T EXTN
PAINTED FRAME ID & SHAFT,
FAN COVER INSIDE & ODE E/S OUTSIDE
700 CU IN - 3.00" NPT
INPRO SEAL BOTH ENDS
OIL RESISTANT SLEEVING ON LEADS
.002" TIR SHAFT RUNOUT
ROUTINE TEST REPORT AND 5 POINT VIBRATION TEST
REPORT INCLUDED IN C/B
COPPER WASHER UNDER HEADS OF BEARING CAP BOLTS,
APPLY TITE-SEAL (A50CD427A) ON BEARING CAP SCREWS,
RABBETS AND PLUG THREADS.
B5F4C4 HIGH FATIGUE STEEL AISI 4142 SHAFT MATERIAL
GROUND PAD
F1 MOUNTING



Performance Characteristics

1st Winding 1st Connection

Design: 44BD3081B

Marks:

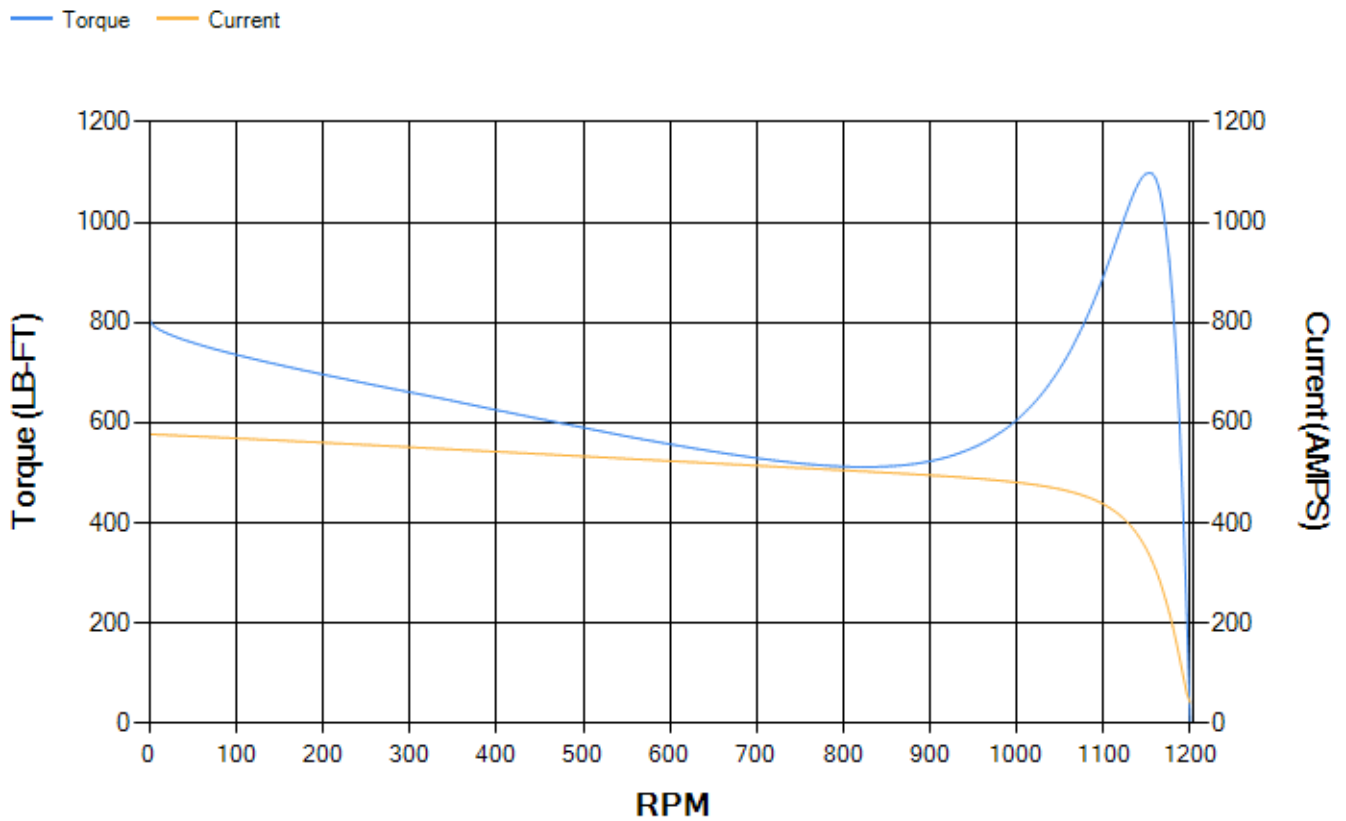
LOAD %	125.0	115.0	100.0	75.0	50.0	25.0	0.0
% EFF	94.43	94.66	95.12	95.1	94.64	91.87	0.00
% PF	82.87	82.33	80.93	76.24	65.91	43.58	3.49
AMPS	119.6	110.5	97.27	77.45	60.02	46.75	40.65

TORQ(FL)#FT	440.76	TORQ(LR)%FL	182.73	TORQ(BD)%FL	248.88
AMPS(LR)	577.04	PF AT START	0.34		

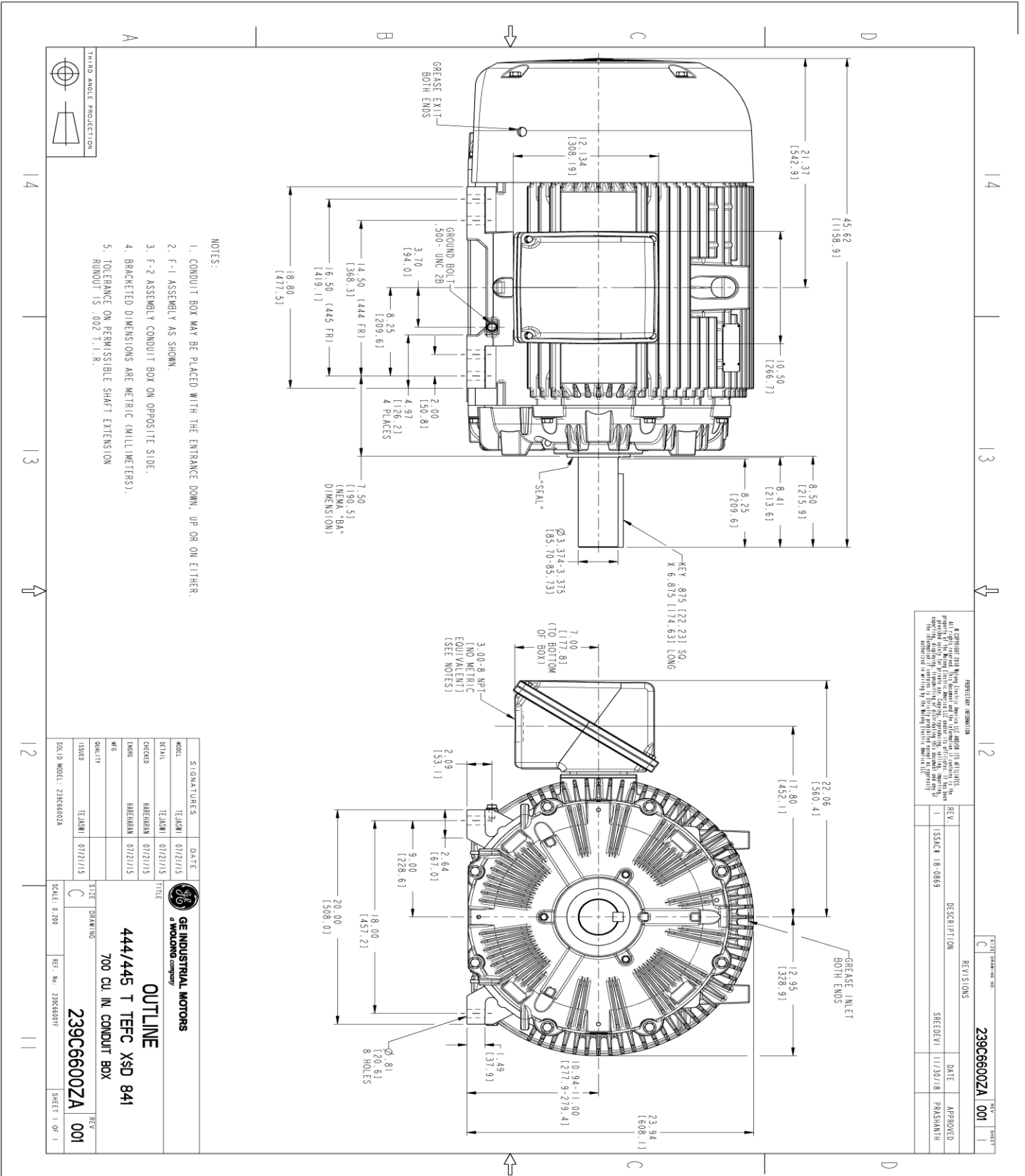
This motor is capable of two cold or one hot start with a maximum connected load inertia of 5350 Lb-Ft Sq (225.24 Kg-meter Sq)at 100% voltage, where the load torque varies with the square of the speed. Acceleration time with maximum inertia and the above load type is 42 seconds. Safe stall time at 100% voltage is 82 seconds cold, 51 seconds hot. Rotor inertia is 77.95 Lb-Ft Sq (3.28 Kg-meter Sq).

Open Circuit A-C:	0.817	Short Circuit D-C:	0.025
Short Circuit A-C:	0.053	X/R Ratio:	9.38
Stator Slots:	72	Rotor Slots:	58

Speed Torque Current Curve (First Connection, First Speed)



Marks:



NOTES:

1. CONDUIT BOX MAY BE PLACED WITH THE ENTRANCE DOWN, UP OR ON EITHER.
2. F-1 ASSEMBLY AS SHOWN.
3. F-2 ASSEMBLY CONDUIT BOX ON OPPOSITE SIDE.
4. BRACKETED DIMENSIONS ARE METRIC (MILLIMETERS).
5. TOLERANCE ON PERMISSIBLE SHAFT EXTENSION MINIMUM IS .002 T.I.R.

REPRODUCTION INFORMATION
 All rights reserved. This drawing is the property of GE Industrial Motors. It is to be used for the production of parts and assemblies only. It is not to be used for any other purpose without the written consent of GE Industrial Motors. The information contained herein is confidential and its disclosure to third parties is prohibited.

REV.	DESCRIPTION	DATE	APPROVED
1	ISSUE 18-0869	11/30/18	PARSHANTH

239C6600ZA 001



THIRD ANGLE PROJECTION



GE INDUSTRIAL MOTORS

a WOLONG company

OUTLINE

444/445 T TEFC XSD 841

700 CU. IN. CONDUIT BOX

239C6600ZA 001

SIGNATURES	DATE	TITLE
MODEL: TEJANI	01/21/15	
REV.1: TEJANI	01/21/15	
CHECKED: HERRMAN	01/21/15	
DRAWN: HERRMAN	01/21/15	
WFS		
QUALITY		
ISSUED: TEJANI	01/21/15	
SIZE: DRAWING		
SCALE: 0.200		
REF. NO.: 239C66001F		
SHEET 1 OF 1		

Marks:

Connection Diagram
GEM2034E-FIG7



End shield Assembly		
Part Description	DE Side Part#	ODE Side Part#
End Shield	115E4355AA1	115E4355LL1
Bearing	235A2519AA01	235A2514AG01
Slinger/Inproseal	235A4575GS5	235A4575GS5

Fan & Fan Cover Assembly	
Part Description	Part#
Fan	159C7100G03
Fan Cover	128D6841AA1

Conduit & Accessories Box Assembly	
Part Description	Part#
Conduit Box	118D4408AD2

Mechanical Accessories	
Part Description	Part#
Brake	
Tachometer	

