



GE INDUSTRIAL MOTORS
a **WOLONG** company

Product Technical Information

June 25, 2020

Data shown is for the current revision model #. Ensure your nameplate model # matches.

Model Number:	5KS324XAA304D8
Catalog Number:	M9577
Instruction Manual:	GEI-56128
Connection Diagram:	GEM2034E-FIG7
Outline Drawing:	239C6000RJ

Accessory Connection Diagrams

Bearing Thermocouple:	None	Heater:	None
RTD:	None	Thermistor:	None
Thermostat:	None	Winding Thermocouple:	None
Bearing RTD:	None		

Table of Contents

Specification	01
Performance Characteristics	02
Outline Drawing	03
Connection Drawing(s)	04
Spare parts	05

Marks:

MODEL NUMBER:	5KS324XAA304D8	Estimated Weight:	660 Lbs
Outline Drawing:	239C6000RJ	Time Rating:	CONT
Connection Diagram:	GEM2034E-FIG7	Enclosure:	TEFC
Instruction Book:	GEI-56128	Encl Construction:	841
Design Code:	32BD3099B	Ambient Max(°C):	40
Type:	KS	Alt Ambient Max(°C):	--
Frame:	324T	Insulation Class:	H
Phases:	3	NEMA Design:	B
Poles:	6	Nominal Efficiency:	93.0 %
Output Power:	25HP 18.5KW	Guaranteed Efficiency:	92.4 %
RPM:	1180	3/4 Load Efficiency:	93.4 %
Voltage:	575	KVA Code:	G
Hertz:	60	Max KVAR:	10.3
Amps - FL:	25.6	Power Factor:	78.5
Service Factor:	1.15	Bearing - DE:	6312ZC3
Alt Service Factor:	--	Bearing - ODE:	6312ZC3

Enclosure is Totally Enclosed Fan-Cooled

Stamped Nameplate Notes:

IEEE-STD-841-2009

DE BRG 60BC03JP30, ODE BRG 60BC03JP30

STAMP NP249A5564P051 AS BELOW:

MODEL:5KS324XAA304D8 S/N: XXX

CSA CERTIFIED CSA09.2216219 FOR EX NA IIC 200 C GC

CL 1 ZONE2 AEX NA IIC 200C;CL 1 DIV2 GRP ABCD 200C

IN -25C <= AMB <= 40C, 1.0 SF ON SINE-WAVE PWR

SURF TEMP 200C AT 1.15SF ON SINE-WAVE PWR

OR 200C VT OR 200C CT OR 200C CHP PWM CONTROL

ALTERNATE RATING FOR PWM CONTROL 1.0SF 40C AMB

VT 0-60 HZ, CT 3-60 HZ, CHP 60-90 HZ.



Additional Information:

6P - T EXTN
PAINTED FRAME ID & SHAFT,
FAN COVER INSIDE & ODE E/S OUTSIDE
346 CU IN - 3.00" NPT
INPRO SEAL BOTH ENDS
OIL RESISTANT SLEEVING ON LEADS
.0015" TIR SHAFT RUNOUT
ROUTINE TEST REPORT AND 5 POINT VIBRATION TEST
REPORT INCLUDED IN C/B
COPPER WASHER UNDER HEADS OF BEARING CAP BOLTS,
APPLY TITE-SEAL (A50CD427A) ON BEARING CAP SCREWS,
RABBETS AND PLUG THREADS.
GROUND PAD
F1 MOUNTING



Performance Characteristics

1st Winding 1st Connection

Design: 32BD3099B

Marks:

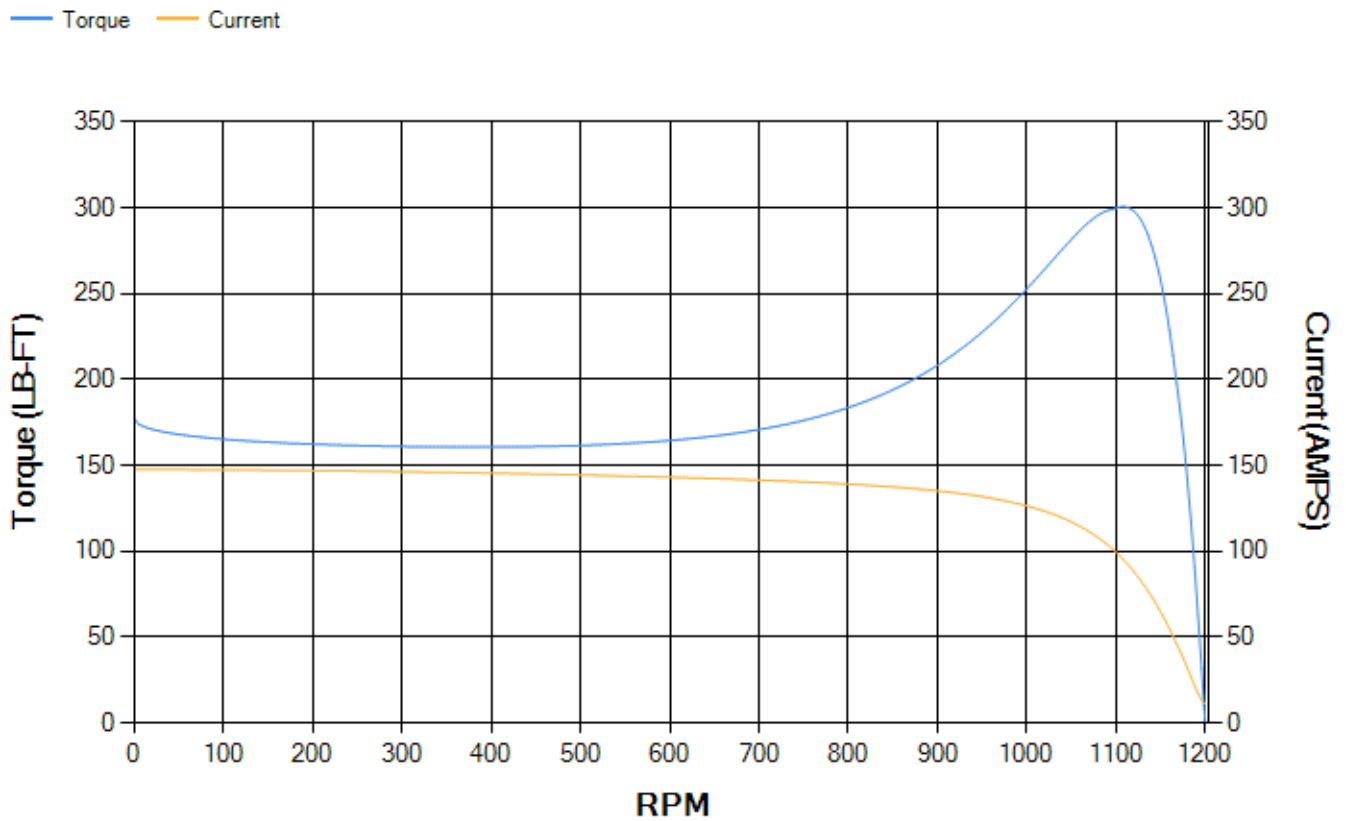
LOAD %	125.0	115.0	100.0	75.0	50.0	25.0	0.0
% EFF	92.16	92.53	93.18	93.36	92.9	89.53	0.00
% PF	81.01	80.31	78.62	73.27	62.23	40.31	4.01
AMPS	31.34	28.97	25.54	20.52	16.19	12.97	11.46

TORQ(FL)#FT	111.2	TORQ(LR)%FL	159.39	TORQ(BD)%FL	268.17
AMPS(LR)	147.73	PF AT START	0.33		

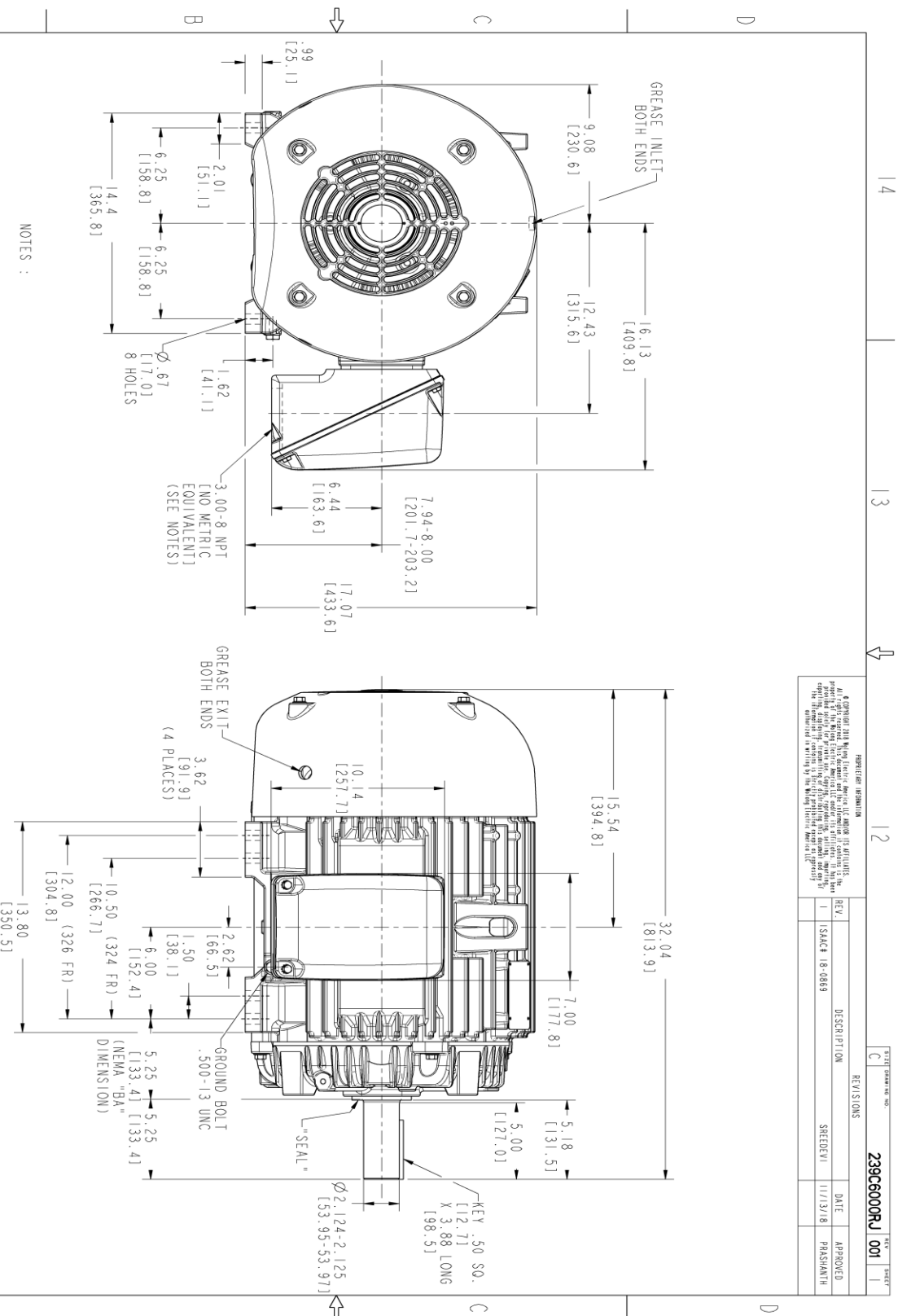
This motor is capable of two cold or one hot start with a maximum connected load inertia of 2437 Lb-Ft Sq (102.6 Kg-meter Sq) at 100% voltage, where the load torque varies with the square of the speed. Acceleration time with maximum inertia and the above load type is 62 seconds. Safe stall time at 100% voltage is 116 seconds cold, 75 seconds hot. Rotor inertia is 8.87 Lb-Ft Sq (0.37 Kg-meter Sq).

Open Circuit A-C:	0.34	Short Circuit D-C:	0.017
Short Circuit A-C:	0.022	X/R Ratio:	6.555
Stator Slots:	54	Rotor Slots:	40

Speed Torque Current Curve (First Connection, First Speed)



Marks:



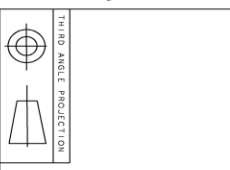
NOTES :

1. CONDUIT BOX MAY BE PLACED WITH THE ENTRANCE DOWN, UP OR ON EITHER SIDE.
2. F-1 ASM AS SHOWN.
3. BRACKETED DIMENSIONS ARE METRIC (MILLIMETERS).
4. TOLERANCE ON PERMISSIBLE SHAFT EXTENSION RUNOUT IS .0015 T.I.R.

SIGNATURES		DATE	
MODEL	TEJASNI	06/19/15	
DESIGNED	MARHUJ	06/19/15	
CHECKED	VIKRAM	06/19/15	
DATE	TEJASNI	06/19/15	

REV.	DESCRIPTION	DATE	APPROVED
1	ISSUE 18-0869	11/13/18	PARSHANTH

239C6000RJ	001
------------	-----



THIRD ANGLE PROJECTION	
SCALE: 0.250	
REF. No: 239C6000RJ	
SHEET 1 OF 1	

GE INDUSTRIAL MOTORS	
a WOLSKONG company	
OUTLINE	
324/326 T TEFC XSD 841	
346 CU IN CONDUIT BOX	
239C6000RJ	

Marks:

Connection Diagram
GEM2034E-FIG7



End shield Assembly		
Part Description	DE Side Part#	ODE Side Part#
End Shield	115E4200AA1	115E4200LA1
Bearing	235A2509AS01	235A2509AS01
Slinger/Inproseal	235A4575GS2	235A4575GS2

Fan & Fan Cover Assembly	
Part Description	Part#
Fan	159C7000G01
Fan Cover	128D6800AA1

Conduit & Accessories Box Assembly	
Part Description	Part#
Conduit Box	149C4429AA2

Mechanical Accessories	
Part Description	Part#
Brake	
Tachometer	

