



GE INDUSTRIAL MOTORS
a **WOLONG** company

Product Technical Information

February 17, 2023

Data shown is for the current revision model #. Ensure your nameplate model # matches.

Model Number:	5KS326XAA404D9
Catalog Number:	M9578
Instruction Manual:	GEI-56128
Connection Diagram:	GEM2034E-FIG7
Outline Drawing:	239C6000RJ

Accessory Connection Diagrams			
Bearing Thermocouple:	None	Heater:	None
RTD:	None	Thermistor:	None
Thermostat:	None	Winding Thermocouple:	None
Bearing RTD:	None		

Table of Contents	
Specification	01
Performance Characteristics	02
Outline Drawing	03
Connection Drawing(s)	04

Marks:

MODEL NUMBER:	5KS326XAA404D9	Estimated Weight:	670 Lbs
Outline Drawing:	239C6000RJ	Time Rating:	CONT
Connection Diagram:	GEM2034E-FIG7	Enclosure:	TEFC
Instruction Book:	GEI-56128	Encl Construction:	841
Design Code:	32BD4038B	Ambient Max(°C):	40
Type:	KS	Alt Ambient Max(°C):	--
Frame:	326T	Insulation Class:	H
Phases:	3	NEMA Design:	B
Poles:	8	Nominal Efficiency:	91.0 %
Output Power:	25HP 18.5KW	Guaranteed Efficiency:	90.2 %
RPM:	880	3/4 Load Efficiency:	91.5 %
Voltage:	575	KVA Code:	G
Hertz:	60	Max KVAR:	15.0
Amps - FL:	30.3	Power Factor:	68.0
Service Factor:	1.15	Bearing - DE:	6312ZC3
Alt Service Factor:	--	Bearing - ODE:	6312ZC3

Enclosure is Totally Enclosed Fan-Cooled

Stamped Nameplate Notes:

IEEE-STD-841-2009
 DE BRG 60BC03JP30, ODE BRG 60BC03JP30
 INVERTER DUTY PER NEMA MG1 PART 31
 ALTERNATE RATING FOR PWM CONTROL:1.0SF 40C AMBIENT
 VAR TORQUE RANGE 0-60 HZ
 MAX EXPOSED INTERNAL AND EXTERNAL SURFACE
 TEMPERATURES UNDER USUAL SERVICE CONDITIONS
 AT 1.00 S.F. DO NOT EXCEED 200 DEG C
 STAMP NP249A5499AP AS BELOW:
 MODEL:5KS326XAA404D9 S/N: XXX
 EX NA IIC T3 GC CSA.09.2216219
 CLASS I, ZONE 2, AEX NA IIC T3
 CLASS I, DIV 2, GROUPS A, B, C, D T3
 -25C <= TAMB <= 40C



Additional Information:

8P - T EXTN
PAINTED FRAME ID & SHAFT,
FAN COVER INSIDE & ODE E/S OUTSIDE
346 CU IN - 3.00" NPT
INPRO SEAL BOTH ENDS
OIL RESISTANT SLEEVING ON LEADS
.0015" TIR SHAFT RUNOUT
ROUTINE TEST REPORT AND 5 POINT VIBRATION TEST
REPORT INCLUDED IN C/B
COPPER WASHER UNDER HEADS OF BEARING CAP BOLTS,
APPLY TITE-SEAL (A50CD427A) ON BEARING CAP SCREWS,
RABBETS AND PLUG THREADS.
GROUND PAD
F1 MOUNTING



Performance Characteristics

1st Winding 1st Connection

Design: 32BD4038B

Marks:

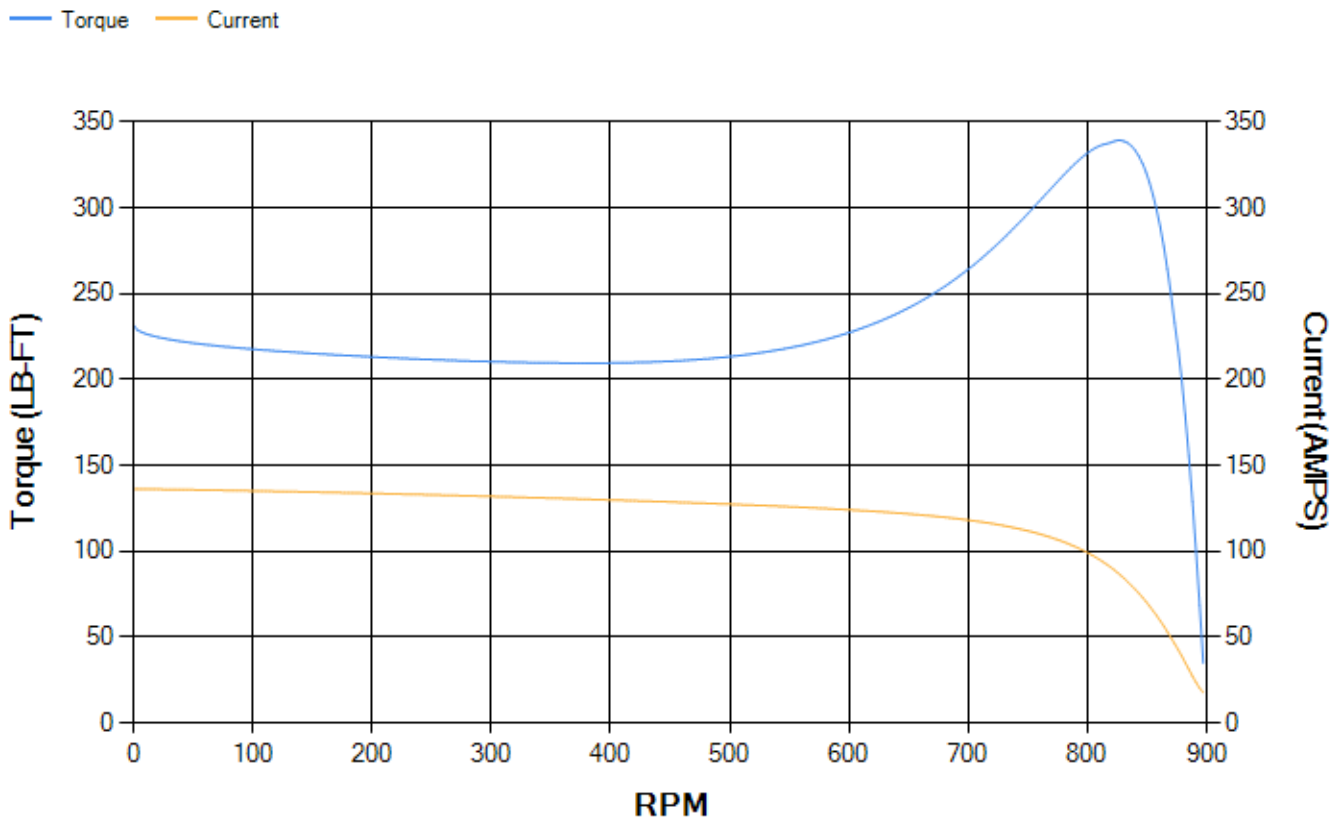
LOAD %	125.0	115.0	100.0	75.0	50.0	25.0	0.0
% EFF	89.86	90.4	91.22	91.51	90.85	86.46	0.00
% PF	71.51	70.52	68.2	61.44	49.41	30.04	3.56
AMPS	36.41	33.77	30.06	24.97	20.85	18.02	16.72

TORQ(FL)#FT	149.19	TORQ(LR)%FL	155.45	TORQ(BD)%FL	225.47
AMPS(LR)	136.41	PF AT START	0.34		

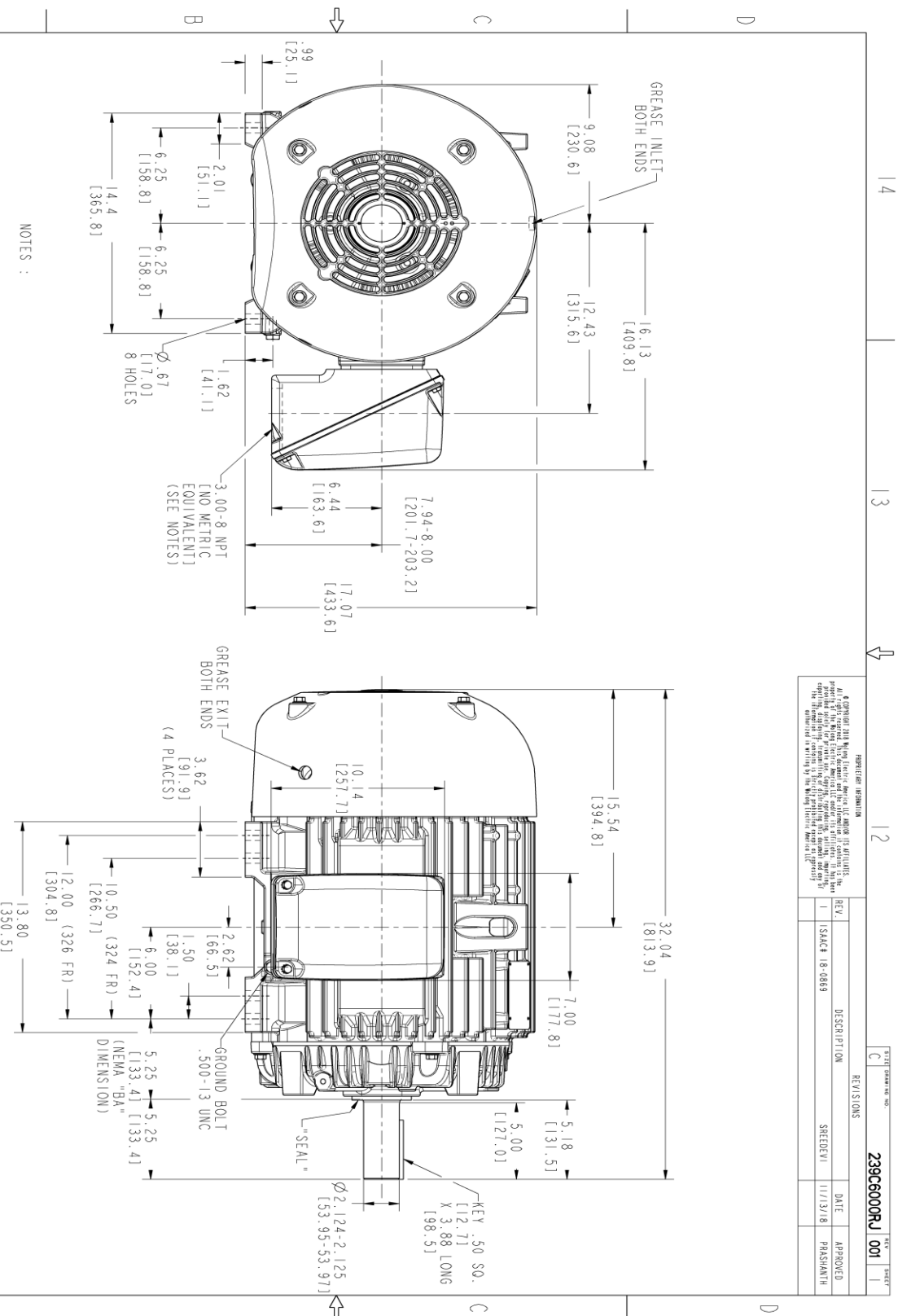
This motor is capable of two cold or one hot start with a maximum connected load inertia of 4005 Lb-Ft Sq (168.61 Kg-meter Sq)at 100% voltage, where the load torque varies with the square of the speed. Acceleration time with maximum inertia and the above load type is 62 seconds. Safe stall time at 100% voltage is 141 seconds cold, 74 seconds hot. Rotor inertia is 9.29 Lb-Ft Sq (0.39 Kg-meter Sq).

Open Circuit A-C:	0.191	Short Circuit D-C:	0.018
Short Circuit A-C:	0.02	X/R Ratio:	6.635
Stator Slots:	54	Rotor Slots:	40

Speed Torque Current Curve (First Connection, First Speed)



Marks:



NOTES :

1. CONDUIT BOX MAY BE PLACED WITH THE ENTRANCE DOWN, UP OR ON EITHER SIDE.
2. F-1 ASM AS SHOWN.
3. BRACKETED DIMENSIONS ARE METRIC (MILLIMETERS).
4. TOLERANCE ON PERMISSIBLE SHAFT EXTENSION RUNOUT IS .0015 T.I.R.

REVISION INFORMATION 1. GE reserves the right to make changes in design, specifications, materials, dimensions, and other information without notice and without obligation to update any drawings. The information on this drawing is subject to change without notice. The information on this drawing is not to be used for manufacturing purposes without the approval of GE.			
REV.	DESCRIPTION	DATE	APPROVED
1	ISSUE 18-0869	11/13/18	PRASHANTH
REVISED			
SHEET DRAWING NO. 239C6000RJ 001			
REV. 1			

GE INDUSTRIAL MOTORS a WOLSKEL company	
MODEL	TEJASNI 061/19/15
RETAIL	TEJASNI 061/19/15
CHECKED	KARTHICK 061/19/15
DWG NO	VIKRAM 061/19/15
DATE	06/19/15
ISSUED	TEJASNI 061/19/15
SCALE	0.250
REF. NO.	239C6000RJ
TITLE OUTLINE 324/326 T TEFC XSD 841 346 CU. IN. CONDUIT BOX	
SIZE DRAWING C	
SHEET NO. 001	



14 13 12 11

Marks:

Connection Diagram
GEM2034E-FIG7

