



GE INDUSTRIAL MOTORS
a **WOLONG** company

Product Technical Information

June 25, 2020

Data shown is for the current revision model #. Ensure your nameplate model # matches.

Model Number:	5KS364XAA114D8
Catalog Number:	M9591
Instruction Manual:	GEI-56128
Connection Diagram:	GEM2034E-FIG7
Outline Drawing:	239C6200RD

Accessory Connection Diagrams

Bearing Thermocouple:	None	Heater:	None
RTD:	None	Thermistor:	None
Thermostat:	None	Winding Thermocouple:	None
Bearing RTD:	None		

Table of Contents

Specification	01
Performance Characteristics	02
Outline Drawing	03
Connection Drawing(s)	04
Spare parts	05

Marks:

MODEL NUMBER: 5KS364XAA114D8
Outline Drawing: 239C6200RD
Connection Diagram: GEM2034E-FIG7
Instruction Book: GEI-56128
Design Code: 36BD0117B
Type: KS
Frame: 364TS
Phases: 3
Poles: 2
Output Power: 60HP 44.4KW
RPM: 3575
Voltage: 575
Hertz: 60
Amps - FL: 56.3
Service Factor: 1.15
Alt Service Factor: --

Estimated Weight: 970 Lbs
Time Rating: CONT
Enclosure: TEFC
Encl Construction: 841
Ambient Max(°C): 40
Alt Ambient Max(°C): --
Insulation Class: H
NEMA Design: B
Nominal Efficiency: 94.5 %
Guaranteed Efficiency: 94.1 %
3/4 Load Efficiency: --
KVA Code: G
Max KVAR: 19.2
Power Factor: 84.5
Bearing - DE: 6314ZC3
Bearing - ODE: 6314ZC3

Enclosure is Totally Enclosed Fan-Cooled

Stamped Nameplate Notes:

IEEE-STD-841-2009
 DE BRG 70BC03JP30, ODE BRG 70BC03JP30
 STAMP NP249A5564P051 AS BELOW:
 MODEL:5KS364XAA114D8 S/N: XXX
 CSA CERTIFIED CSA09.2216219 FOR EX NA IIC 200 C GC
 CL 1 ZONE2 AEX NA IIC 200C;CL 1 DIV2 GRP ABCD 200C
 IN -25C <= AMB <= 40C, 1.0 SF ON SINE-WAVE PWR
 SURF TEMP 215C AT 1.15SF ON SINE-WAVE PWR
 OR 200 C VT OR 230 C CT OR --- C CHP PWM CONTROL
 ALTERNATE RATING FOR PWM CONTROL 1.0SF 40C AMB
 VT 0-60 HZ, CT 3-60 HZ, CHP --- HZ.



Additional Information:

2P - TS EXTN
PAINTED FRAME ID & SHAFT,
FAN COVER INSIDE & ODE E/S OUTSIDE
346 CU IN - 3.00" NPT
INPRO SEAL BOTH ENDS
OIL RESISTANT SLEEVING ON LEADS
.0015" TIR SHAFT RUNOUT
ROUTINE TEST REPORT AND 5 POINT VIBRATION TEST
REPORT INCLUDED IN C/B
COPPER WASHER UNDER HEADS OF BEARING CAP BOLTS,
APPLY TITE-SEAL (A50CD427A) ON BEARING CAP SCREWS,
RABBETS AND PLUG THREADS.
GROUND PAD
F1 MOUNTING



Performance Characteristics

1st Winding 1st Connection

Design: 36BD0117B

Marks:

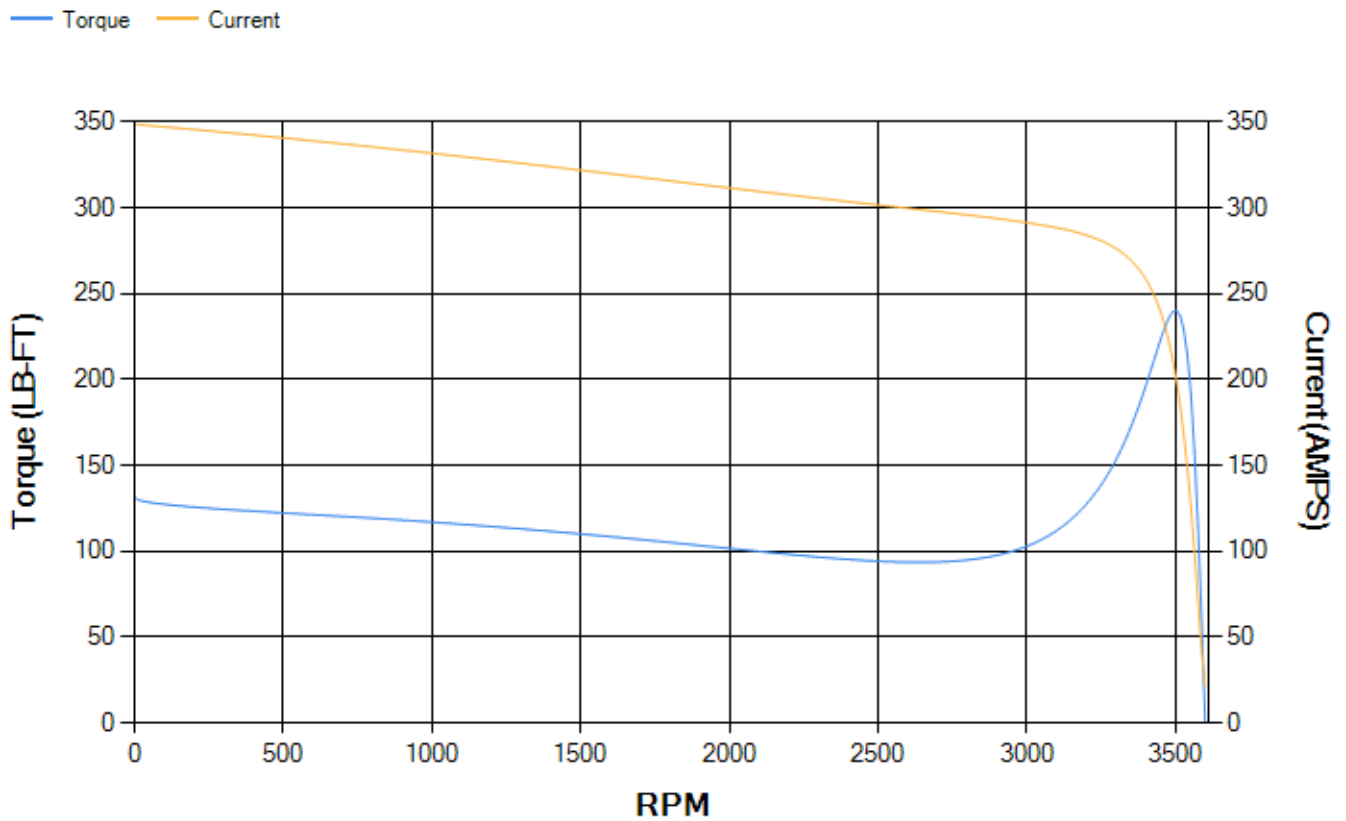
LOAD %	125.0	115.0	100.0	75.0	50.0	25.0	0.0
% EFF	94.07	94.26	94.66	94.49	93.75	90.26	0.00
% PF	86.29	85.8	84.58	80.45	70.96	48.76	4.74
AMPS	69.18	63.88	56	44.33	33.76	25.52	21.56

TORQ(FL)#FT	88.12	TORQ(LR)%FL	149.17	TORQ(BD)%FL	272.47
AMPS(LR)	348.77	PF AT START	0.31		

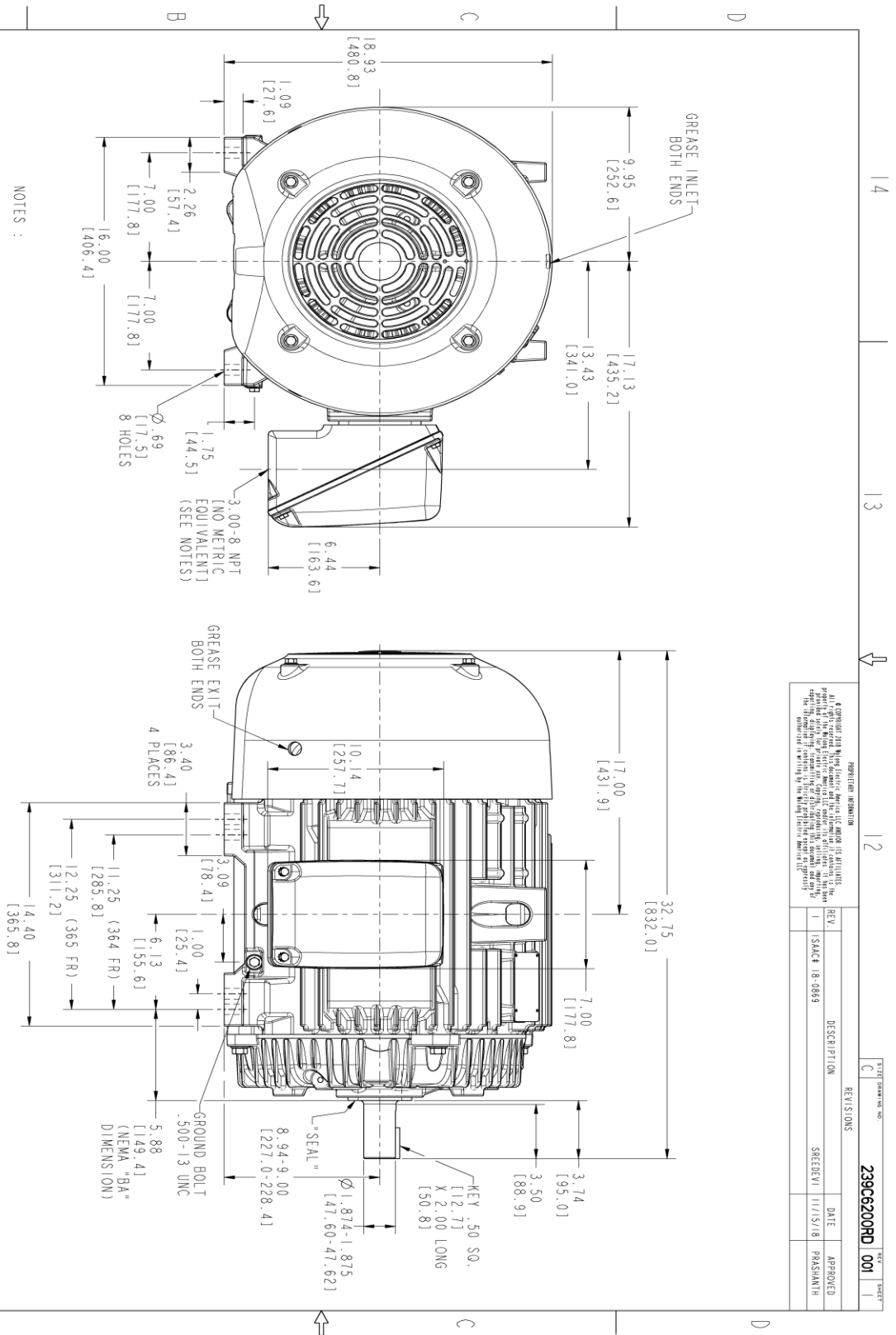
This motor is capable of two cold or one hot start with a maximum connected load inertia of 154 Lb-Ft Sq (6.48 Kg-meter Sq)at 100% voltage, where the load torque varies with the square of the speed. Acceleration time with maximum inertia and the above load type is 21 seconds. Safe stall time at 100% voltage is 47 seconds cold, 26 seconds hot. Rotor inertia is 6.96 Lb-Ft Sq (0.29 Kg-meter Sq).

Open Circuit A-C:	0.941	Short Circuit D-C:	0.022
Short Circuit A-C:	0.054	X/R Ratio:	8.293
Stator Slots:	48	Rotor Slots:	38

Speed Torque Current Curve (First Connection, First Speed)



Marks:



NOTES :

1. CONDUIT BOX MAY BE PLACED WITH THE ENTRANCE DOWN, UP OR ON EITHER SIDE.
2. F-1 ASM AS SHOWN.
3. F-2 ASM HAS CONDUIT BOX ON OPPOSITE SIDE.
4. BRACKETED DIMENSIONS ARE METRIC (MILLIMETERS).
5. TOLERANCE ON PERMISSIBLE SHAFT EXTENSION RUNOUT IS .0015 T.I.R.

PROPRIETARY INFORMATION
 © Copyright 2018 Wabtec Electric America LLC and/or its affiliates. All rights reserved. This document is the property of Wabtec Electric America LLC and/or its affiliates. It is intended for use only for the specific project and is not to be distributed, copied, or reproduced in any form without the prior written permission of Wabtec Electric America LLC. The information contained herein is the confidential property of Wabtec Electric America LLC.

REV.	DESCRIPTION	DATE	APPROVED
1	ISAC# 18-0869	11/15/18	PRASHANTH

SIGNATURES	DATE
MODEL: TEJSMI	06/19/15
DESIGN: TEJSMI	06/19/15
CHECKED: VEKMT	06/19/15
DATE: VEKMT	06/19/15
QUALITY: TEJSMI	06/19/15

GE INDUSTRIAL MOTORS
 a WOLONG company

OUTLINE
 364/365 TS TEFC XSD 841
 346 CU IN CONDUIT BOX

SCALE: 0.250 REF. NO: 239C6200RD

239C6200RD
 SHEET 1 OF 1

Marks:

Connection Diagram
GEM2034E-FIG7



End shield Assembly		
Part Description	DE Side Part#	ODE Side Part#
End Shield	115E4250AA1	115E4250LK1
Bearing	235A2516AC01	235A2516AC01
Slinger/Inproseal	235A4575GS3	235A4575GS3

Fan & Fan Cover Assembly	
Part Description	Part#
Fan	159C6700G02
Fan Cover	128D6810AA1

Conduit & Accessories Box Assembly	
Part Description	Part#
Conduit Box	149C4429AA2

Mechanical Accessories	
Part Description	Part#
Brake	
Tachometer	

