



**GE INDUSTRIAL MOTORS**  
a **WOLONG** company

# Product Technical Information

June 25, 2020

Data shown is for the current revision model #. Ensure your nameplate model # matches.

<b>Model Number:</b>	<b>5KS404XAA304D6</b>
<b>Catalog Number:</b>	<b>M9593</b>
<b>Instruction Manual:</b>	GEI-56128
<b>Connection Diagram:</b>	GEM2034E-FIG1
<b>Outline Drawing:</b>	239C6400PZ

## Accessory Connection Diagrams

<b>Bearing Thermocouple:</b>	None	<b>Heater:</b>	None
<b>RTD:</b>	None	<b>Thermistor:</b>	None
<b>Thermostat:</b>	None	<b>Winding Thermocouple:</b>	None
<b>Bearing RTD:</b>	None		

## Table of Contents

Specification	01
Performance Characteristics	02
Outline Drawing	03
Connection Drawing(s)	04
Spare parts	05

Marks:

<b>MODEL NUMBER:</b>	<b>5KS404XAA304D6</b>	<b>Estimated Weight:</b>	1410 Lbs
<b>Outline Drawing:</b>	239C6400PZ	<b>Time Rating:</b>	CONT
<b>Connection Diagram:</b>	GEM2034E-FIG1	<b>Enclosure:</b>	TEFC
<b>Instruction Book:</b>	GEI-56128	<b>Encl Construction:</b>	841
<b>Design Code:</b>	40BD3068B	<b>Ambient Max(°C):</b>	40
<b>Type:</b>	KS	<b>Alt Ambient Max(°C):</b>	--
<b>Frame:</b>	404T	<b>Insulation Class:</b>	H
<b>Phases:</b>	3	<b>NEMA Design:</b>	B
<b>Poles:</b>	6	<b>Nominal Efficiency:</b>	94.5 %
<b>Output Power:</b>	60HP 44.4KW	<b>Guaranteed Efficiency:</b>	94.1 %
<b>RPM:</b>	1190	<b>3/4 Load Efficiency:</b>	94.5 %
<b>Voltage:</b>	575	<b>KVA Code:</b>	G
<b>Hertz:</b>	60	<b>Max KVAR:</b>	22.6
<b>Amps - FL:</b>	58.7	<b>Power Factor:</b>	81.0
<b>Service Factor:</b>	1.15	<b>Bearing - DE:</b>	6316ZC3
<b>Alt Service Factor:</b>	--	<b>Bearing - ODE:</b>	6316ZC3

Enclosure is Totally Enclosed Fan-Cooled

---

Stamped Nameplate Notes:

IEEE-STD-841-2009  
 DE BRG 80BC03JP3, ODE BRG 80BC03JP3  
 STAMP NP249A5564P051 AS BELOW:  
 MODEL:5KS404XAA304D6 S/N: XXX  
 CSA CERTIFIED CSA09.2216219 FOR EX NA IIC 200 C GC  
 CL 1 ZONE2 AEX NA IIC 200C;CL 1 DIV2 GRP ABCD 200C  
 IN -25C <= AMB <= 40C, 1.0 SF ON SINE-WAVE PWR  
 SURF TEMP 200C AT 1.15SF ON SINE-WAVE PWR  
 OR 200C VT OR 215C CT OR 200C CHP PWM CONTROL  
 ALTERNATE RATING FOR PWM CONTROL 1.0SF 40C AMB  
 VT 0 - 60 HZ, CT 3-60 HZ, CHP 60-90 HZ.



**Additional Information:**

6P - T EXTN  
PAINTED FRAME ID & SHAFT,  
FAN COVER INSIDE & ODE E/S OUTSIDE  
C/BOX 700 CU IN - 3.00" NPT  
INPRO SEAL BOTH ENDS  
OIL RESISTANT SLEEVING ON LEADS  
.0015" TIR SHAFT RUNOUT  
ROUTINE TEST REPORT AND 5 POINT VIBRATION TEST  
REPORT INCLUDED IN C/B  
COPPER WASHER UNDER HEADS OF BEARING CAP BOLTS,  
APPLY TITE-SEAL (A50CD427A) ON BEARING CAP SCREWS,  
RABBETS AND PLUG THREADS.  
GROUND PAD  
F1 MOUNTING



**Performance Characteristics**

1st Winding 1st Connection

**Design: 40BD3068B**

**Marks:**

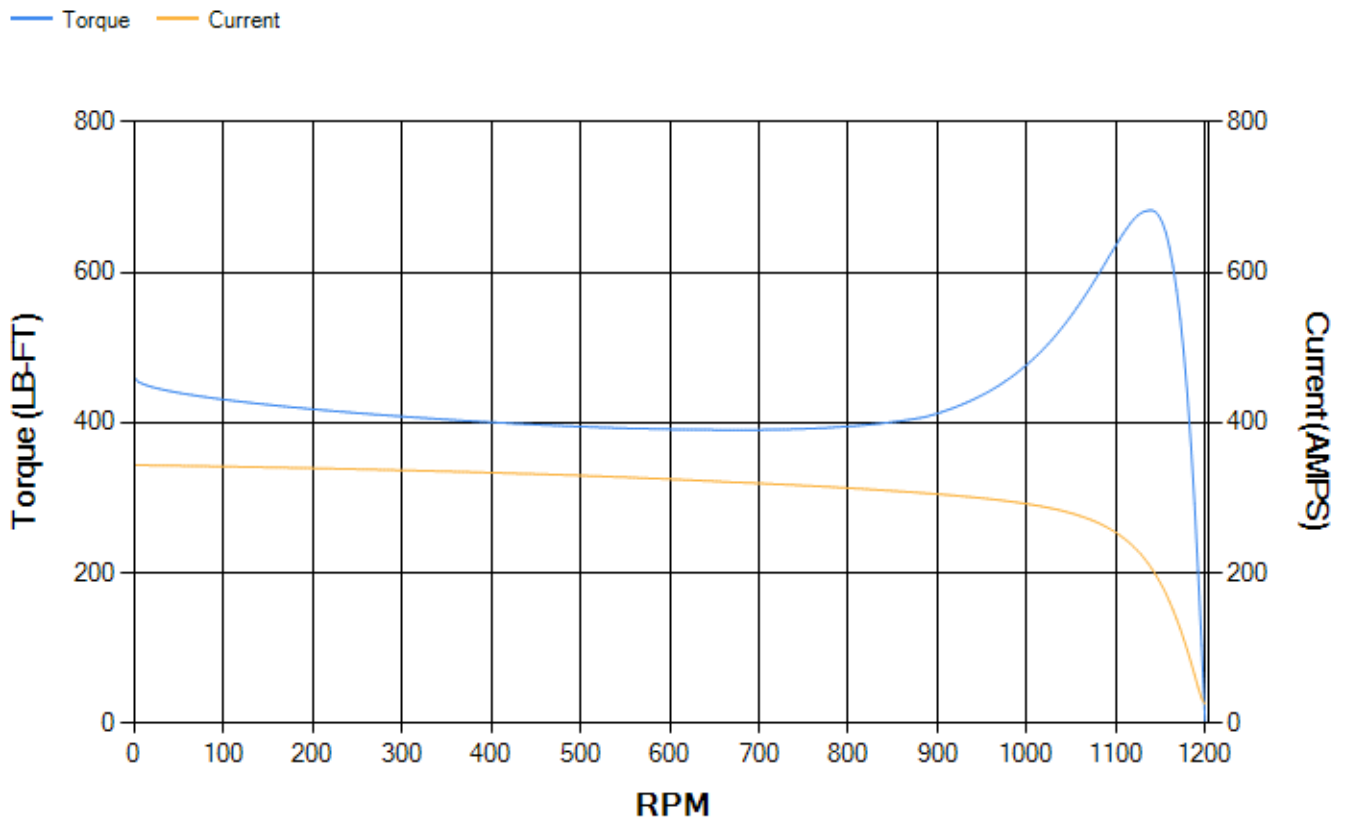
LOAD %	125.0	115.0	100.0	75.0	50.0	25.0	0.0
% EFF	93.78	94.03	94.53	94.53	94.03	90.99	0.00
% PF	83.05	82.4	80.84	75.83	65.15	42.74	3.62
AMPS	72.1	66.68	58.67	47	36.67	28.88	25.21

<b>TORQ(FL)#FT</b>	264.93	<b>TORQ(LR)%FL</b>	173.6	<b>TORQ(BD)%FL</b>	256.91
<b>AMPS(LR)</b>	343.52	<b>PF AT START</b>	0.35		

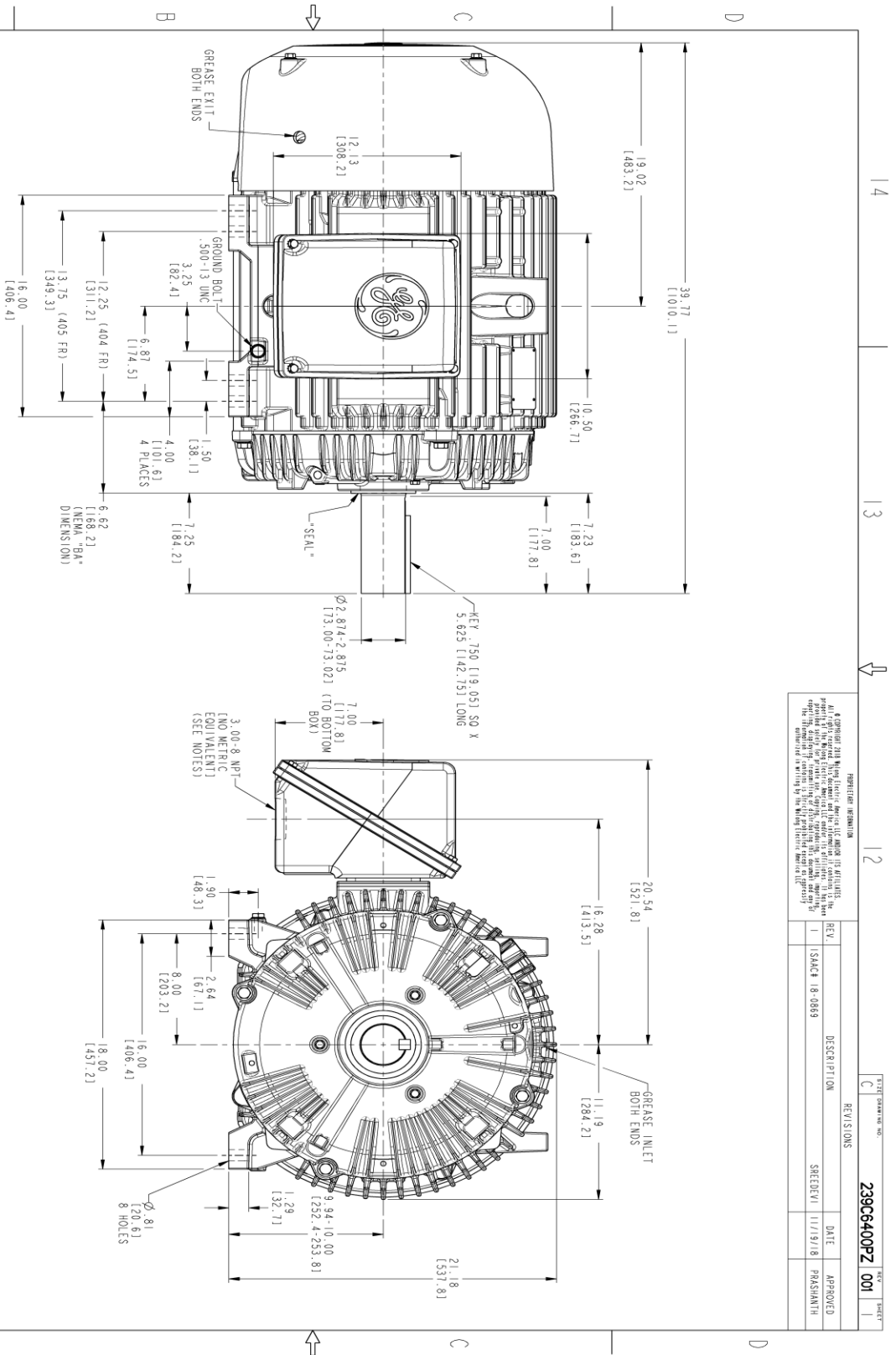
This motor is capable of two cold or one hot start with a maximum connected load inertia of 5229 Lb-Ft Sq (220.14 Kg-meter Sq)at 100% voltage, where the load torque varies with the square of the speed. Acceleration time with maximum inertia and the above load type is 59 seconds. Safe stall time at 100% voltage is 123 seconds cold, 76 seconds hot. Rotor inertia is 28.28 Lb-Ft Sq (1.19 Kg-meter Sq).

<b>Open Circuit A-C:</b>	0.635	<b>Short Circuit D-C:</b>	0.021
<b>Short Circuit A-C:</b>	0.04	<b>X/R Ratio:</b>	7.86
<b>Stator Slots:</b>	72	<b>Rotor Slots:</b>	58

**Speed Torque Current Curve (First Connection, First Speed)**



Marks:



REPRODUCTION INFORMATION  
 All rights reserved. This drawing is the property of GE Industrial Motors. It is to be used for the design and construction of the motor only. It is not to be used for any other purpose. The information contained herein is confidential and its disclosure to any third party without the written consent of GE Industrial Motors is prohibited.

REV.	DESCRIPTION	DATE	APPROVED
1	ISSUE 18-0869	11/19/18	PRASANTH

NOTES:

1. CONDUIT BOX MAY BE PLACED WITH THE ENTRANCE DOWN, UP OR ON EITHER SIDE.
2. F-1 ASSEMBLY AS SHOWN.
3. F-2 ASSEMBLY CONDUIT BOX ON OPPOSITE SIDE.
4. BRACKETED DIMENSIONS ARE METRIC (MILLIMETERS).
5. TOLERANCE ON PERMISSIBLE SHAFT EXTENSION RUNOUT IS .0015 T.I.R.



SIGNATURES	DATE	TITLE
MODEL: TEJSMI 06/29/15		
DESIGN: TEJSMI 06/29/15		
CHECKED: KARTHICK 06/29/15		
DATE: TEJSMI 06/29/15		
ISSUED: TEJSMI 06/29/15		

**GE INDUSTRIAL MOTORS**  
 a WOLONG company

**OUTLINE**  
 404/405 T TEFC XSD 841  
 700 CU. IN. CONDUIT BOX

SCALE: 0.250

REF. NO: 239C6400PZ

239C6400PZ 001

SHEET 1 OF 1

**Marks:**

**Connection Diagram**  
**GEM2034E-FIG1**



End shield Assembly		
Part Description	DE Side Part#	ODE Side Part#
End Shield	115E4304AA1	115E4304LL1
Bearing	235A2518AC01	235A2518AC01
Slinger/Inproseal	235A4575GS4	235A4575GS4

Fan & Fan Cover Assembly	
Part Description	Part#
Fan	159C7100G02
Fan Cover	128D6832AA1

Conduit & Accessories Box Assembly	
Part Description	Part#
Conduit Box	118D4408AD2

Mechanical Accessories	
Part Description	Part#
Brake	
Tachometer	

