



GE INDUSTRIAL MOTORS
a **WOLONG** company

Product Technical Information

June 6, 2023

Data shown is for the current revision model #. Ensure your nameplate model # matches.

Model Number:	5KS405XAA404D7
Catalog Number:	M9594
Instruction Manual:	GEI-56128
Connection Diagram:	GEM2034E-FIG1
Outline Drawing:	239C6400PZ

Accessory Connection Diagrams			
Bearing Thermocouple:	None	Heater:	None
RTD:	None	Thermistor:	None
Thermostat:	None	Winding Thermocouple:	None
Bearing RTD:	None		

Table of Contents

Specification	01
Performance Characteristics	02
Outline Drawing	03
Connection Drawing(s)	04
Spare parts	05

Marks:

MODEL NUMBER: 5KS405XAA404D7
Outline Drawing: 239C6400PZ
Connection Diagram: GEM2034E-FIG1
Instruction Book: GEI-56128
Design Code: 40BD4038B
Type: KS
Frame: 405T
Phases: 3
Poles: 8
Output Power: 60HP 44.4KW
RPM: 890
Voltage: 575
Hertz: 60
Amps - FL: 71.6
Service Factor: 1.15
Alt Service Factor: --

Estimated Weight: 1440 Lbs
Time Rating: CONT
Enclosure: TEFC
Encl Construction: 841
Ambient Max(°C): 40
Alt Ambient Max(°C): --
Insulation Class: H
NEMA Design: B
Nominal Efficiency: 93.0 %
Guaranteed Efficiency: 92.4 %
3/4 Load Efficiency: --
KVA Code: G
Max KVAR: 38.2
Power Factor: 67.5
Bearing - DE: 6316ZC3
Bearing - ODE: 6316ZC3

Enclosure is Totally Enclosed Fan-Cooled

Stamped Nameplate Notes:

IEEE STD 841-2021

STAMP NP249A5564P051 AS BELOW:

MODEL:5KS405XAA404D7 S/N: XXX

CSA CERTIFIED CSA09.2216219 FOR EX NA IIC 200 C GC

CL 1 ZONE2 AEX NA IIC 200C;CL 1 DIV2 GRP ABCD 200C

IN -25C <= AMB <= 40C, 1.0 SF ON SINE-WAVE PWR

SURF TEMP 230C AT 1.15SF ON SINE-WAVE PWR

OR 200C VT OR 230C CT OR 200C CHP PWM CONTROL

ALTERNATE RATING FOR PWM CONTROL 1.0SF 40C AMB

VT 0 - 60 HZ, CT 15-60 HZ, CHP 60-90 HZ.



Additional Information:

8P - T EXTN
C/BOX 700 CU IN - 3.00" NPT
SHAFT SEAL BOTH ENDS
OIL RESISTANT SLEEVING ON LEADS
.0015" TIR SHAFT RUNOUT
GROUND PAD
F1 MOUNTING
PAINTED FRAME ID & SHAFT,
FAN COVER INSIDE & ODE E/S OUTSIDE
ROUTINE TEST REPORT AND 5 POINT VIBRATION TEST
REPORT INCLUDED IN C/B
COPPER WASHER UNDER HEADS OF BEARING CAP BOLTS,
APPLY TITE-SEAL (A50CD427A) ON BEARING CAP SCREWS,
RABBETS AND PLUG THREADS.



Performance Characteristics

1st Winding 1st Connection

Design: 40BD4038B

Marks:

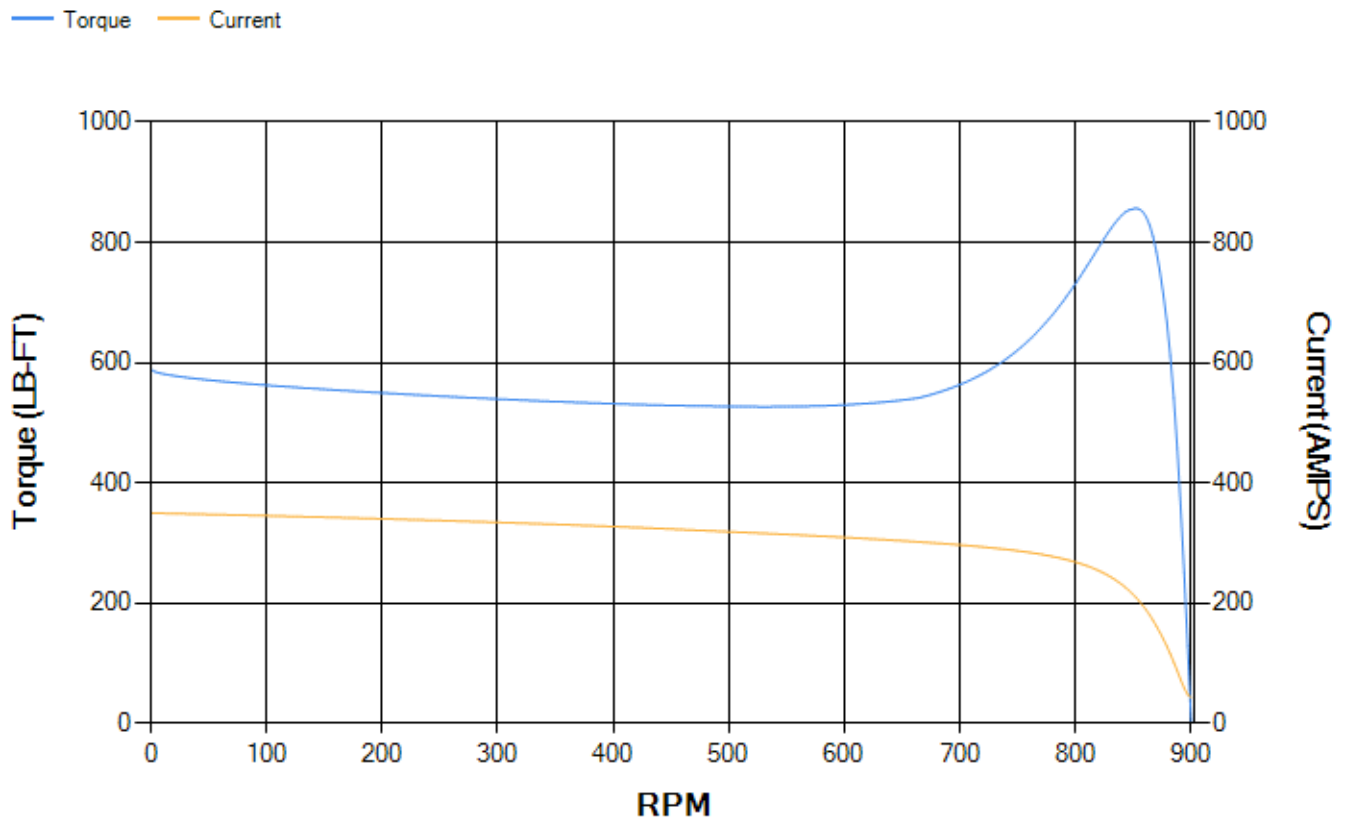
LOAD %	125.0	115.0	100.0	75.0	50.0	25.0	0.0
% EFF	92.86	93.1	93.56	93.4	92.51	88.35	0.00
% PF	71.84	70.43	67.54	59.93	47.32	28.1	2.84
AMPS	84.18	78.79	71.06	60.2	51.31	45.24	42.58

TORQ(FL)#FT	353.87	TORQ(LR)%FL	166.62	TORQ(BD)%FL	241.42
AMPS(LR)	349.62	PF AT START	0.36		

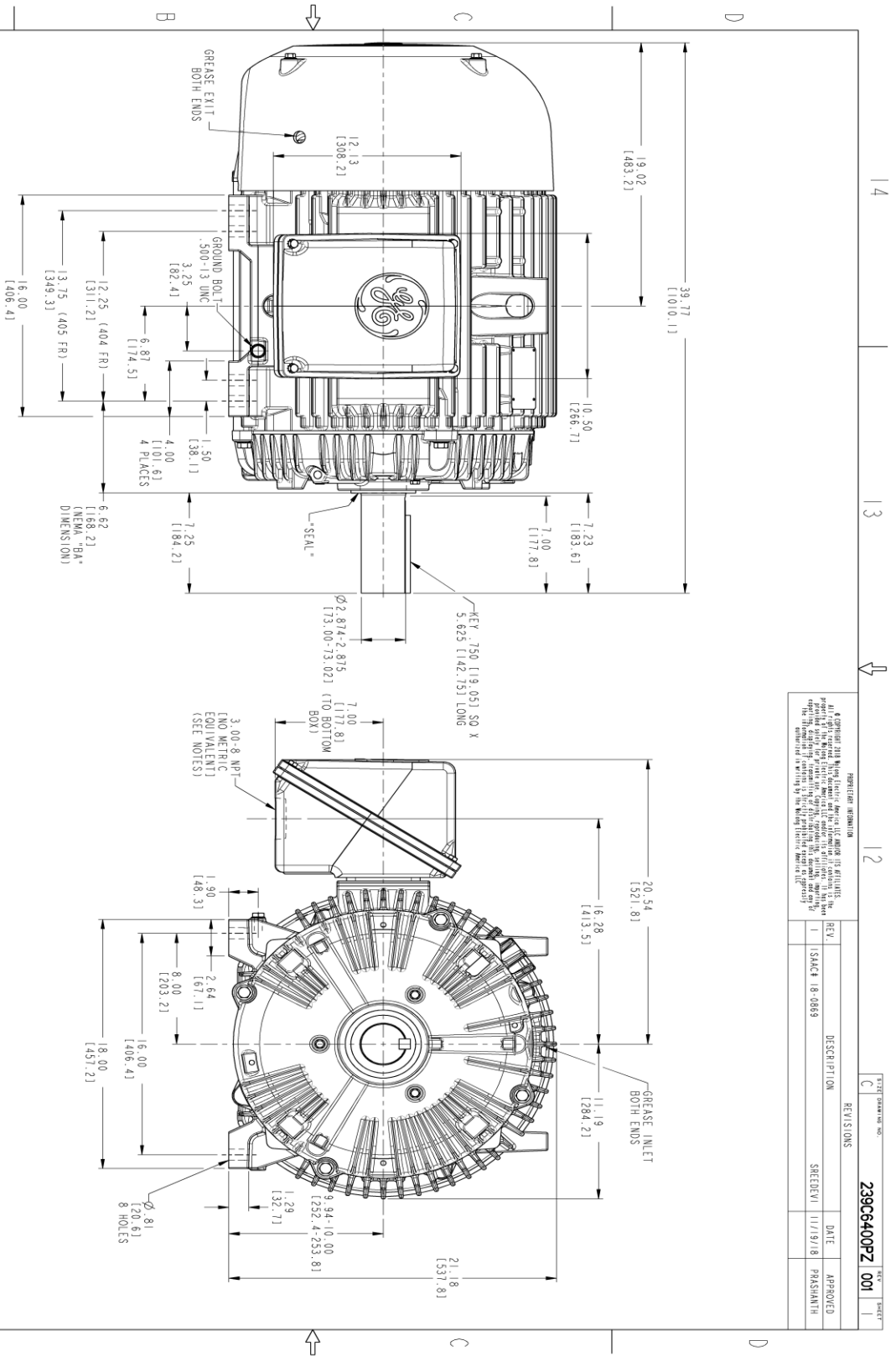
This motor is capable of two cold or one hot start with a maximum connected load inertia of 5678 Lb-Ft Sq (239.04 Kg-meter Sq)at 100% voltage, where the load torque varies with the square of the speed. Acceleration time with maximum inertia and the above load type is 36 seconds. Safe stall time at 100% voltage is 108 seconds cold, 56 seconds hot. Rotor inertia is 31.82 Lb-Ft Sq (1.34 Kg-meter Sq).

Open Circuit A-C:	0.345	Short Circuit D-C:	0.021
Short Circuit A-C:	0.038	X/R Ratio:	7.881
Stator Slots:	72	Rotor Slots:	58

Speed Torque Current Curve (First Connection, First Speed)



Marks:



PROHIBITION INFORMATION

It is prohibited to reproduce, distribute, or disseminate any information contained herein without the prior written permission of GE Industrial Motors. The information contained herein is the property of GE Industrial Motors and is confidential. The information contained herein is not to be used for any other purpose without the prior written permission of GE Industrial Motors.

REV.	DESCRIPTION	DATE	APPROVED
1	ISACK 18-0869	11/19/18	PRASANTH

REV. 1 ISACK 18-0869 DATE 11/19/18 APPROVED PRASANTH

THIRD ANGLE PROJECTION

NOTES:

- CONDUIT BOX MAY BE PLACED WITH THE ENTRANCE DOWN, UP OR ON EITHER SIDE.
- F-1 ASSEMBLY AS SHOWN.
- F-2 ASSEMBLY CONDUIT BOX ON OPPOSITE SIDE.
- BRACKETED DIMENSIONS ARE METRIC (MILLIMETERS).
- TOLERANCE ON PERMISSIBLE SHAFT EXTENSION RUNOUT IS .0015 T.I.R.

SIGNATURES	DATE
MODEL: TEJSMI 06/29/15	
DESIGNER: TEJSMI 06/29/15	
CHECKED: KARTHICK 06/29/15	
WFS: VEENAT 06/29/15	
QUALITY: TEJSMI 06/29/15	

GE INDUSTRIAL MOTORS
A WOLONG company

OUTLINE
404/405 T TEFC XSD 841
700 CU. IN. CONDUIT BOX

239C6400PZ 001

SCALE: 0.250 REF. No: 239C64006 SHEET 1 OF 1

Marks:

Connection Diagram
GEM2034E-FIG1



End shield Assembly		
Part Description	DE Side Part#	ODE Side Part#
End Shield	115E4304AA1	115E4304LL1
Bearing	235A2518AC01	235A2518AC01
Slinger/Inproseal	235A4575GS4	235A4575GS4

Fan & Fan Cover Assembly	
Part Description	Part#
Fan	159C7100G02
Fan Cover	128D6832AA1

Conduit & Accessories Box Assembly	
Part Description	Part#
Conduit Box	118D4408AD2

Mechanical Accessories	
Part Description	Part#
Brake	
Tachometer	

