



GE INDUSTRIAL MOTORS
a **WOLONG** company

Product Technical Information

June 25, 2020

Data shown is for the current revision model #. Ensure your nameplate model # matches.

Model Number:	5KS365XAA204D9
Catalog Number:	M9596
Instruction Manual:	GEI-56128
Connection Diagram:	GEM2034E-FIG7
Outline Drawing:	239C6200RC

Accessory Connection Diagrams

Bearing Thermocouple:	None	Heater:	None
RTD:	None	Thermistor:	None
Thermostat:	None	Winding Thermocouple:	None
Bearing RTD:	None		

Table of Contents

Specification	01
Performance Characteristics	02
Outline Drawing	03
Connection Drawing(s)	04
Spare parts	05

Marks:

MODEL NUMBER: 5KS365XAA204D9
Outline Drawing: 239C6200RC
Connection Diagram: GEM2034E-FIG7
Instruction Book: GEI-56128
Design Code: 36BD1227B
Type: KS
Frame: 365T
Phases: 3
Poles: 4
Output Power: 75HP 55.5KW
RPM: 1785
Voltage: 575
Hertz: 60
Amps - FL: 71.4
Service Factor: 1.15
Alt Service Factor: --

Estimated Weight: 1020 Lbs
Time Rating: CONT
Enclosure: TEFC
Encl Construction: 841
Ambient Max(°C): 40
Alt Ambient Max(°C): --
Insulation Class: H
NEMA Design: B
Nominal Efficiency: 95.4 %
Guaranteed Efficiency: 95.0 %
3/4 Load Efficiency: 95.6 %
KVA Code: G
Max KVAR: 26.2
Power Factor: 82.5
Bearing - DE: 6314ZC3
Bearing - ODE: 6314ZC3

Enclosure is Totally Enclosed Fan-Cooled

Stamped Nameplate Notes:

IEEE-STD-841-2009

DE BRG 70BC03JP30, ODE BRG 70BC03JP30

STAMP NP249A5564P051 AS BELOW:

MODEL:5KS365XAA204D9 S/N: XXX

CSA CERTIFIED CSA09.2216219 FOR EX NA IIC 200 C GC

CL 1 ZONE2 AEX NA IIC 200C;CL 1 DIV2 GRP ABCD 200C

IN -25C <= AMB <= 40C, 1.0 SF ON SINE-WAVE PWR

SURF TEMP 260C AT 1.15SF ON SINE-WAVE PWR

OR 200 C VT OR 230 C CT OR 200 C CHP PWM CONTROL

ALTERNATE RATING FOR PWM CONTROL 1.0SF 40C AMB

VT 0-60 HZ, CT 10-60 HZ, CHP 60-90 HZ.



Additional Information:

4P - T EXTN
PAINTED FRAME ID & SHAFT,
FAN COVER INSIDE & ODE E/S OUTSIDE
346 CU IN - 3.00" NPT
INPRO SEAL BOTH ENDS
OIL RESISTANT SLEEVING ON LEADS
.0015" TIR SHAFT RUNOUT
ROUTINE TEST REPORT AND 5 POINT VIBRATION TEST
REPORT INCLUDED IN C/B
COPPER WASHER UNDER HEADS OF BEARING CAP BOLTS,
APPLY TITE-SEAL (A50CD427A) ON BEARING CAP SCREWS,
RABBETS AND PLUG THREADS.
GROUND PAD
F1 MOUNTING



Performance Characteristics

1st Winding 1st Connection

Design: 36BD1227B

Marks:

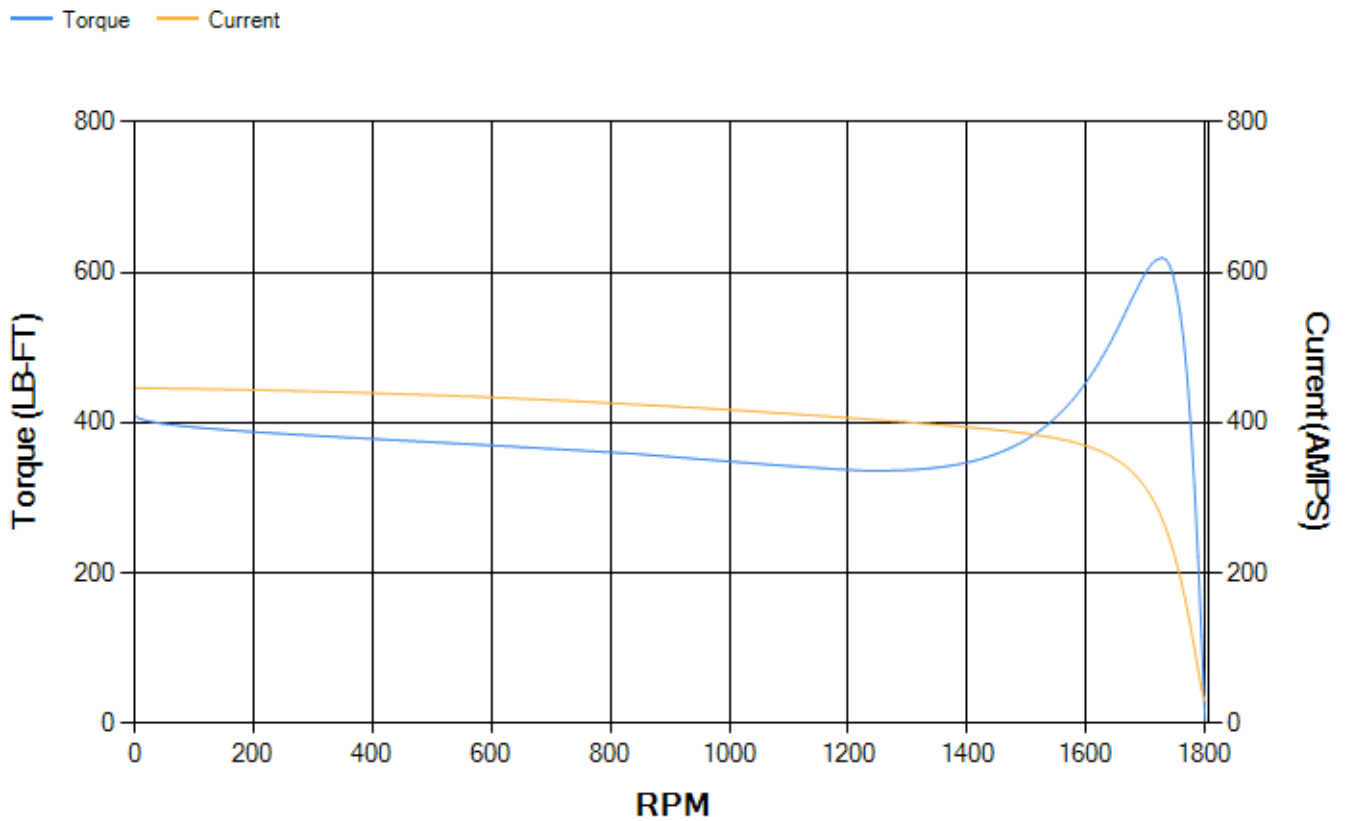
LOAD %	125.0	115.0	100.0	75.0	50.0	25.0	0.0
% EFF	94.87	95.09	95.55	95.57	95.23	92.9	0.00
% PF	84.69	84.06	82.56	77.78	67.36	44.58	2.93
AMPS	87.36	80.8	71.04	56.66	43.77	33.9	29.31

TORQ(FL)#FT	220.88	TORQ(LR)%FL	185.77	TORQ(BD)%FL	279.53
AMPS(LR)	446.19	PF AT START	0.32		

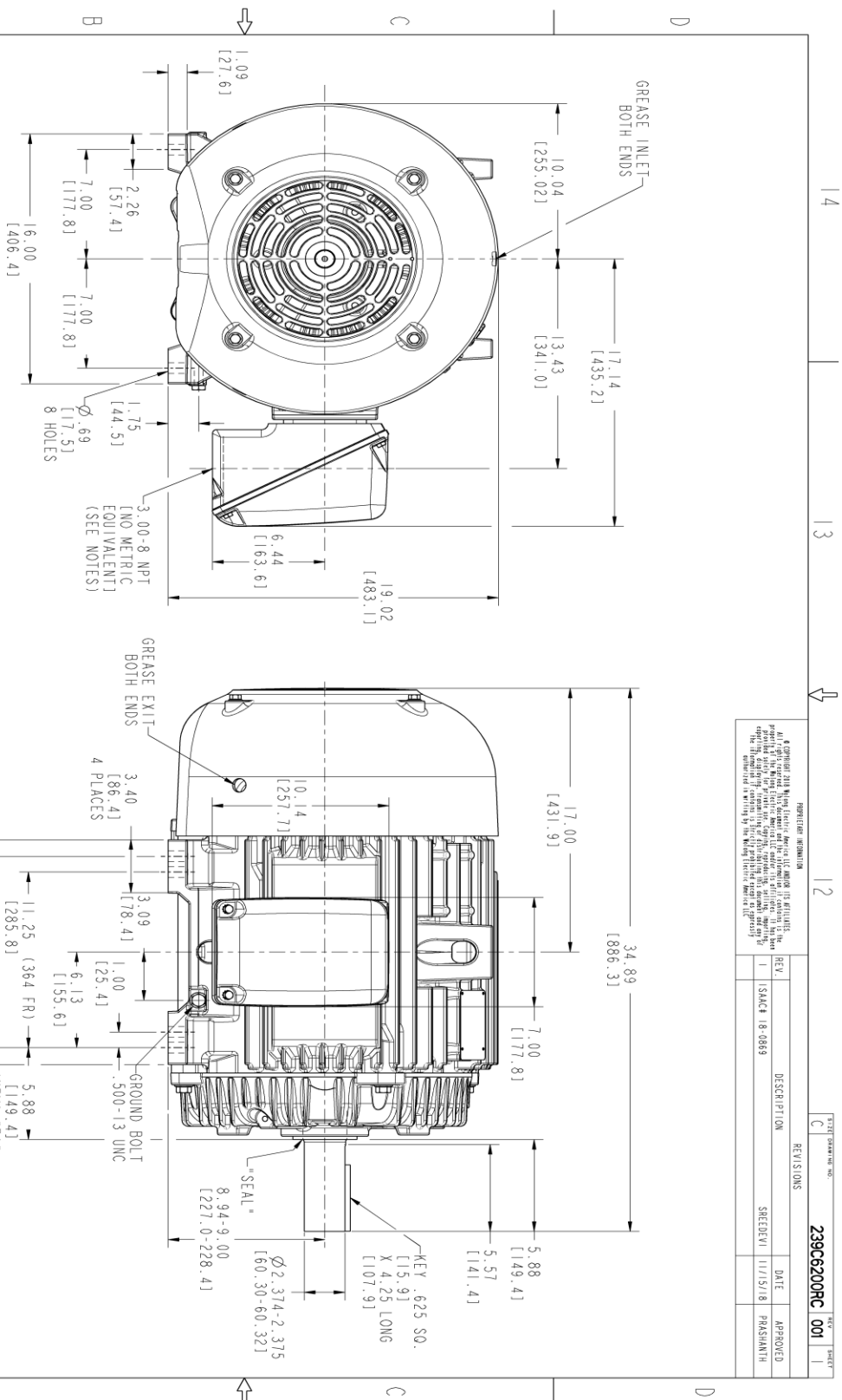
This motor is capable of two cold or one hot start with a maximum connected load inertia of 1432 Lb-Ft Sq (60.29 Kg-meter Sq) at 100% voltage, where the load torque varies with the square of the speed. Acceleration time with maximum inertia and the above load type is 27 seconds. Safe stall time at 100% voltage is 65 seconds cold, 33 seconds hot. Rotor inertia is 15.13 Lb-Ft Sq (0.64 Kg-meter Sq).

Open Circuit A-C:	0.629	Short Circuit D-C:	0.026
Short Circuit A-C:	0.034	X/R Ratio:	9.618
Stator Slots:	60	Rotor Slots:	50

Speed Torque Current Curve (First Connection, First Speed)



Marks:



- NOTES :
1. CONDUIT BOX MAY BE PLACED WITH THE ENTRANCE DOWN, UP OR ON EITHER SIDE.
 2. F-1 ASM AS SHOWN.
 3. F-2 ASM HAS CONDUIT BOX ON OPPOSITE SIDE.
 4. BRACKETED DIMENSIONS ARE METRIC (MILLIMETERS).
 5. TOLERANCE ON PERMISSIBLE SHAFT EXTENSION RUNOUT IS .0015 T.I.R.

REVISION INFORMATION

REV.	DESCRIPTION	DATE	APPROVED
1	ISACH 18-0869	11/15/18	PRASHANTH

239C6200RC 001

THIRD ANGLE PROJECTION

SIGNATURES	DATE
MODEL: TEJSMI 06/19/15	
REVIEW: TEJSMI 06/19/15	
CHECKED: VENKAT 06/19/15	
DESIGN: VENKAT 06/19/15	
DATE: 06/19/15	
ISSUED: TEJSMI 06/19/15	

GE INDUSTRIAL MOTORS
A WOLONG company

OUTLINE

364/365 T TEFC XSD 841

346 CU IN CONDUIT BOX

239C6200RC 001

SCALE: 0.240 REF. NO: 239C620046 SHEET 1 OF 1

Marks:

Connection Diagram
GEM2034E-FIG7



End shield Assembly		
Part Description	DE Side Part#	ODE Side Part#
End Shield	115E4250AA1	115E4250LK1
Bearing	235A2516AC01	235A2516AC01
Slinger/Inproseal	235A4575GS3	235A4575GS3

Fan & Fan Cover Assembly	
Part Description	Part#
Fan	159C7100AA1
Fan Cover	128D6810AA1

Conduit & Accessories Box Assembly	
Part Description	Part#
Conduit Box	149C4429AA2

Mechanical Accessories	
Part Description	Part#
Brake	
Tachometer	

