



GE INDUSTRIAL MOTORS
a **WOLONG** company

Product Technical Information

June 25, 2020

Data shown is for the current revision model #. Ensure your nameplate model # matches.

| | |
|----------------------------|-----------------------|
| Model Number: | 5KS444XAA404D4 |
| Catalog Number: | M9598 |
| Instruction Manual: | GEI-56128 |
| Connection Diagram: | GEM2034E-FIG1 |
| Outline Drawing: | 239C6600YF |

Accessory Connection Diagrams

| | | | |
|------------------------------|------|------------------------------|------|
| Bearing Thermocouple: | None | Heater: | None |
| RTD: | None | Thermistor: | None |
| Thermostat: | None | Winding Thermocouple: | None |
| Bearing RTD: | None | | |

Table of Contents

| | |
|-----------------------------|----|
| Specification | 01 |
| Performance Characteristics | 02 |
| Outline Drawing | 03 |
| Connection Drawing(s) | 04 |
| Spare parts | 05 |

Marks:

| | | | |
|----------------------------|-----------------------|-------------------------------|----------|
| MODEL NUMBER: | 5KS444XAA404D4 | Estimated Weight: | 1700 Lbs |
| Outline Drawing: | 239C6600YF | Time Rating: | CONT |
| Connection Diagram: | GEM2034E-FIG1 | Enclosure: | TEFC |
| Instruction Book: | GEI-56128 | Encl Construction: | 841 |
| Design Code: | 44BD4011B | Ambient Max(°C): | 40 |
| Type: | KS | Alt Ambient Max(°C): | -- |
| Frame: | 444T | Insulation Class: | H |
| Phases: | 3 | NEMA Design: | B |
| Poles: | 8 | Nominal Efficiency: | 93.6 % |
| Output Power: | 75HP 55.5KW | Guaranteed Efficiency: | 93.0 % |
| RPM: | 890 | 3/4 Load Efficiency: | 94.0 % |
| Voltage: | 575 | KVA Code: | G |
| Hertz: | 60 | Max KVAR: | 34.8 |
| Amps - FL: | 80.0 | Power Factor: | 75.0 |
| Service Factor: | 1.15 | Bearing - DE: | 6318ZC3 |
| Alt Service Factor: | -- | Bearing - ODE: | 6318ZC3 |

Enclosure is Totally Enclosed Fan-Cooled

Stamped Nameplate Notes:

IEEE-STD-841-2009

DE BRG 90BC03JP3, ODE BRG 90BC03JP3

STAMP NP249A5564P051 AS BELOW:

MODEL:5KS444XAA404D4 S/N: XXX

CSA CERTIFIED CSA09.2216219 FOR EX NA IIC 200 C GC

CL 1 ZONE2 AEX NA IIC 200C;CL 1 DIV2 GRP ABCD 200C

IN -25C <= AMB <= 40C, 1.0 SF ON SINE-WAVE PWR

SURF TEMP 215C AT 1.15SF ON SINE-WAVE PWR

OR 200C VT OR 230C CT OR 200C CHP PWM CONTROL

ALTERNATE RATING FOR PWM CONTROL 1.0SF 40C AMB

VT 0 - 60 HZ, CT 6-60 HZ, CHP 60-90 HZ.



Additional Information:

8P - T EXTN
PAINTED FRAME ID & SHAFT,
FAN COVER INSIDE & ODE E/S OUTSIDE
700 CU IN - 3.00" NPT
INPRO SEAL BOTH ENDS
OIL RESISTANT SLEEVING ON LEADS
.0015" TIR SHAFT RUNOUT
ROUTINE TEST REPORT AND 5 POINT VIBRATION TEST
REPORT INCLUDED IN C/B
COPPER WASHER UNDER HEADS OF BEARING CAP BOLTS,
APPLY TITE-SEAL (A50CD427A) ON BEARING CAP SCREWS,
RABBETS AND PLUG THREADS.
GROUND PAD
F1 MOUNTING



Performance Characteristics

1st Winding 1st Connection

Design: 44BD4011B

Marks:

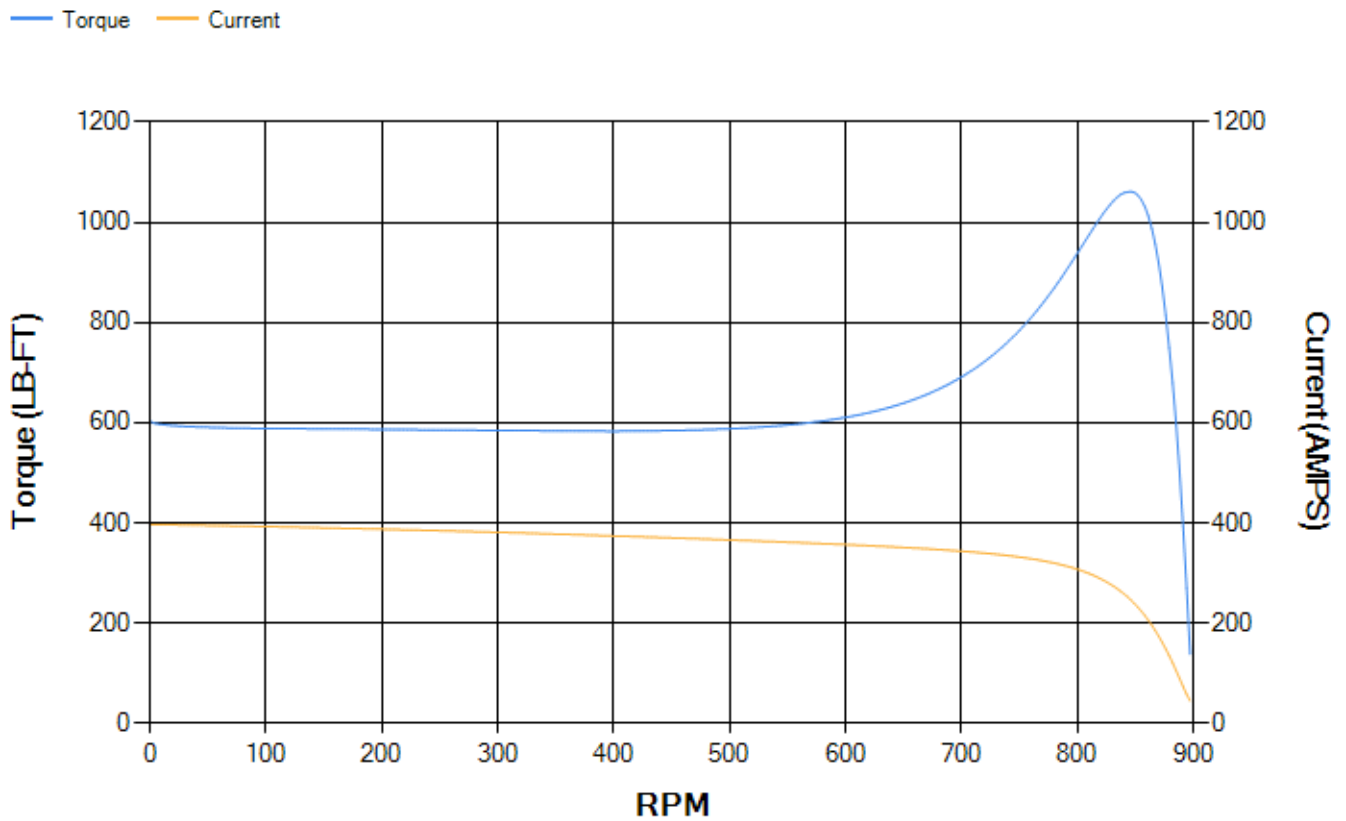
| LOAD % | 125.0 | 115.0 | 100.0 | 75.0 | 50.0 | 25.0 | 0.0 |
|--------|-------|-------|-------|-------|-------|-------|-------|
| % EFF | 93.35 | 93.61 | 94.09 | 93.99 | 93.23 | 89.51 | 0.00 |
| % PF | 77.31 | 76.6 | 74.83 | 69.15 | 57.76 | 36.5 | 3.65 |
| AMPS | 97.27 | 90.06 | 79.77 | 64.8 | 52.14 | 42.97 | 38.88 |

| | | | | | |
|--------------------|--------|--------------------|--------|--------------------|--------|
| TORQ(FL)#FT | 443.13 | TORQ(LR)%FL | 136.27 | TORQ(BD)%FL | 239.04 |
| AMPS(LR) | 396.82 | PF AT START | 0.33 | | |

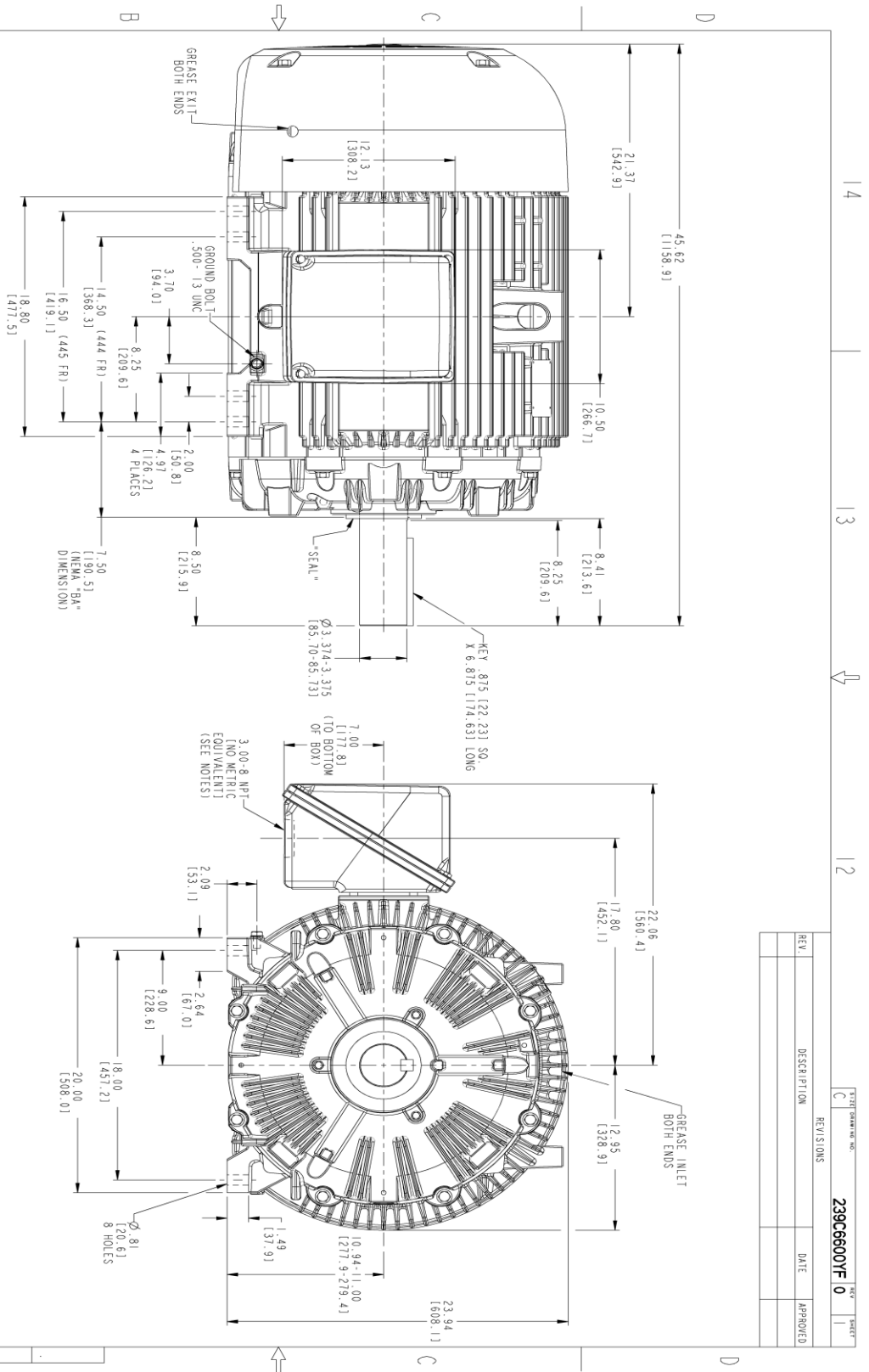
This motor is capable of two cold or one hot start with a maximum connected load inertia of 9116 Lb-Ft Sq (383.78 Kg-meter Sq)at 100% voltage, where the load torque varies with the square of the speed. Acceleration time with maximum inertia and the above load type is 53 seconds. Safe stall time at 100% voltage is 118 seconds cold, 63 seconds hot. Rotor inertia is 53.88 Lb-Ft Sq (2.27 Kg-meter Sq).

| | | | |
|---------------------------|-------|---------------------------|-------|
| Open Circuit A-C: | 0.394 | Short Circuit D-C: | 0.026 |
| Short Circuit A-C: | 0.034 | X/R Ratio: | 9.875 |
| Stator Slots: | 72 | Rotor Slots: | 58 |

Speed Torque Current Curve (First Connection, First Speed)

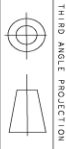


Marks:



NOTES:

1. CONDUIT BOX MAY BE PLACED WITH THE ENTRANCE DOWN, UP OR ON EITHER.
2. F-1 ASSEMBLY AS SHOWN.
3. F-2 ASSEMBLY CONDUIT BOX ON OPPOSITE SIDE.
4. ALL DIMENSIONS ARE IN INCHES. BRACKETED DIMENSIONS ARE METRIC (MILLIMETERS).
5. TOLERANCE ON PERMISSIBLE SHAFT EXTENSION MINIMUM IS .0015" I, I, R.

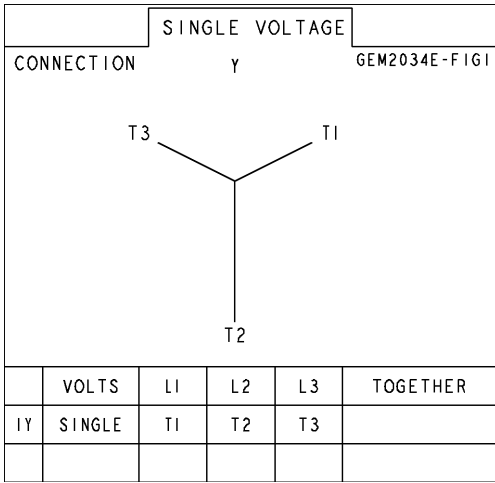


| | | | |
|-------------|--|------------|--|
| TITLE | | REV | |
| C | | 0 | |
| DRAWING NO. | | 239C6600YF | |
| REV'S IONS | | DATE | |
| DESCRIPTION | | APPROVED | |
| REV. | | DATE | |

| | | | |
|-------------------------------------|----------|----------------------|--|
| SIGNATURES | | DATE | |
| MODEL | TEJANI | 06/29/15 | |
| DETAIL | TEJANI | 06/29/15 | |
| CHECKED | HANDEMAN | 06/29/15 | |
| DESIGN | VENKAT | 06/29/15 | |
| QUALITY | TEJANI | 06/29/15 | |
| ISSUED | TEJANI | 06/29/15 | |
| SCALE: 0.200 | | REF. NO.: 239C6600AG | |
| GENERAL ELECTRIC COMPANY | | SHEET 1 OF 1 | |
| OUTLINE | | REV 0 | |
| 444/445 T TEFC XSD 841 | | DISTRIBUTION: MMP | |
| 700 CU. IN. CONDUIT BOX, INPRO SEAL | | | |
| 239C6600YF | | | |

Marks:

Connection Diagram
GEM2034E-FIG1



| End shield Assembly | | |
|---------------------|---------------|----------------|
| Part Description | DE Side Part# | ODE Side Part# |
| End Shield | 115E4355AA1 | 115E4355LM1 |
| Bearing | 235A2514AG01 | 235A2514AG01 |
| Slinger/Inproseal | 235A4575GS5 | 235A4575GS5 |

| Fan & Fan Cover Assembly | |
|--------------------------|-------------|
| Part Description | Part# |
| Fan | 159C7100G03 |
| Fan Cover | 128D6841AA1 |

| Conduit & Accessories Box Assembly | |
|------------------------------------|-------------|
| Part Description | Part# |
| Conduit Box | 118D4408AD2 |

| Mechanical Accessories | |
|------------------------|-------|
| Part Description | Part# |
| Brake | |
| Tachometer | |

