



GE INDUSTRIAL MOTORS
a **WOLONG** company

Product Technical Information

January 12, 2023

Data shown is for the current revision model #. Ensure your nameplate model # matches.

Model Number:	5KS365XAA2158A
Catalog Number:	M9601
Instruction Manual:	GEI-56128
Connection Diagram:	GEM2034E-FIG7
Outline Drawing:	239C6200RR

Accessory Connection Diagrams

Bearing Thermocouple:	None	Heater:	None
RTD:	None	Thermistor:	None
Thermostat:	None	Winding Thermocouple:	None
Bearing RTD:	None		

Table of Contents

Specification	01
Performance Characteristics	02
Outline Drawing	03
Connection Drawing(s)	04
Spare parts	05

Marks:

MODEL NUMBER: 5KS365XAA2158A
Outline Drawing: 239C6200RR
Connection Diagram: GEM2034E-FIG7
Instruction Book: GEI-56128
Design Code: 36BD1227A
Type: KS
Frame: 365T
Phases: 3
Poles: 4
Output Power: 75HP 55.5KW
RPM: 1785
Voltage: 460
Hertz: 60
Amps - FL: 89.2
Service Factor: 1.15
Alt Service Factor: --

Estimated Weight: 1020 Lbs
Time Rating: CONT
Enclosure: TEFC
Encl Construction: 841
Ambient Max(°C): 40
Alt Ambient Max(°C): --
Insulation Class: H
NEMA Design: B
Nominal Efficiency: 95.4 %
Guaranteed Efficiency: 95.0 %
3/4 Load Efficiency: --
KVA Code: G
Max KVAR: 26.6
Power Factor: 82.5
Bearing - DE: NU 314
Bearing - ODE: 6314ZC3

Enclosure is Totally Enclosed Fan-Cooled

Stamped Nameplate Notes:

IEEE STD 841-2021
 ROLLER BEARING - FOR BELTED LOAD ONLY
 STAMP NP249A5564P051 AS BELOW:
 MODEL:5KS365XAA2158A S/N: XXX
 CSA CERTIFIED CSA09.2216219 FOR EX NA IIC 200 C GC
 CL 1 ZONE2 AEX NA IIC 200C;CL 1 DIV2 GRP ABCD 200C
 IN -25C <= AMB <= 40C, 1.0 SF ON SINE-WAVE PWR
 SURF TEMP 215C AT 1.15SF ON SINE-WAVE PWR
 OR 200C VT OR 230C CT OR 200C CHP PWM CONTROL
 ALTERNATE RATING FOR PWM CONTROL 1.0SF 40C AMB
 VT 0-60 HZ, CT 10-60 HZ, CHP 60-90 HZ.
 MAX RADIAL LOAD: 2500 LBF AT 2.94"
 FROM SHAFT SHOULDER



Additional Information:

4P - T EXTN
C/BOX 346 CU IN - 3.00" NPT
INPRO SEAL BOTH ENDS
OIL RESISTANT SLEEVING ON LEADS
.002" TIR SHAFT RUNOUT
B5F4C4 HIGH FATIGUE STEEL AISI 4142 SHAFT MATERIAL
GROUND PAD
F1 MOUNTING
PAINTED FRAME ID & SHAFT,
FAN COVER INSIDE & ODE E/S OUTSIDE
ROUTINE TEST REPORT AND 5 POINT VIBRATION TEST
REPORT INCLUDED IN C/B
COPPER WASHER UNDER HEADS OF BEARING CAP BOLTS,
APPLY TITE-SEAL (A50CD427A) ON BEARING CAP SCREWS,
RABBETS AND PLUG THREADS.



Performance Characteristics

1st Winding 1st Connection

Design: 36BD1227A

Marks:

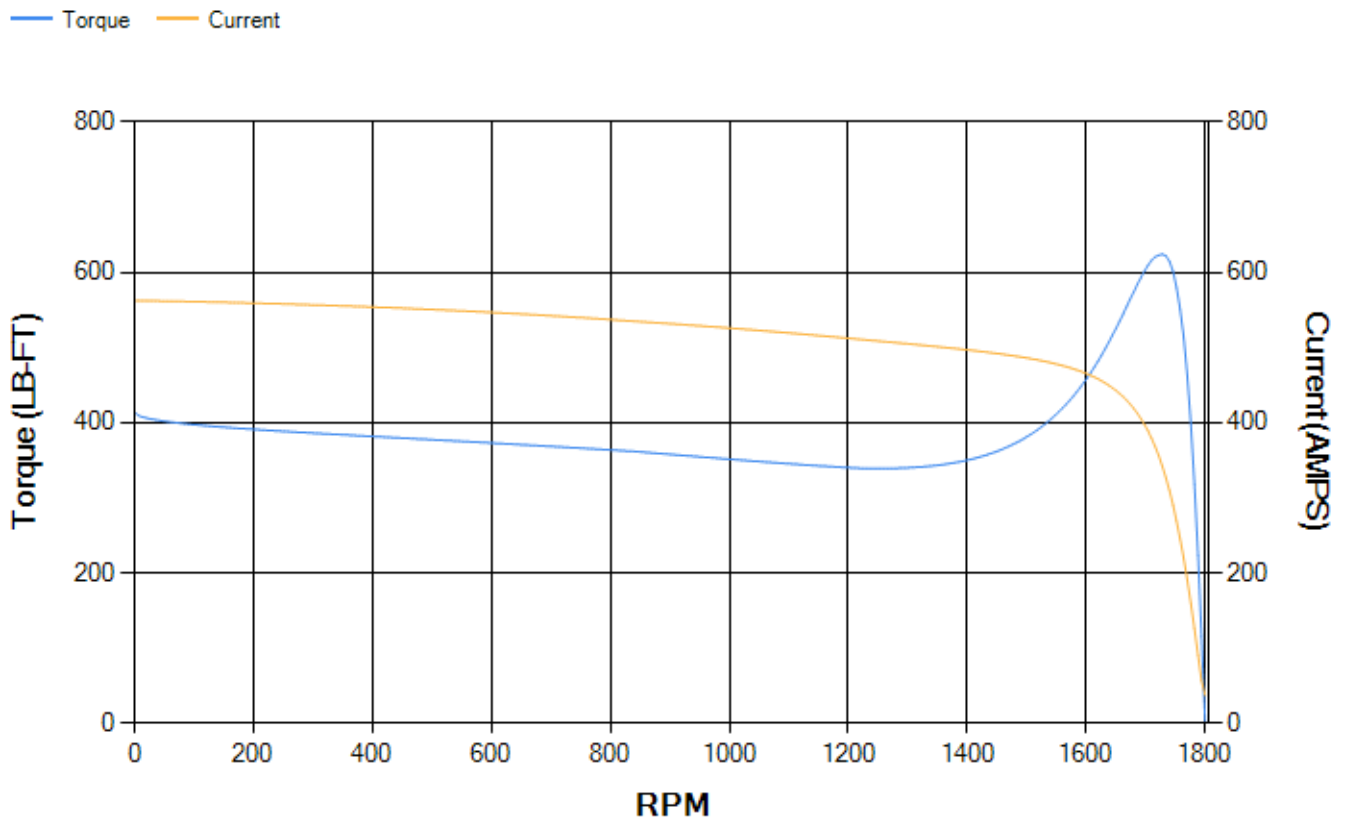
LOAD %	125.0	115.0	100.0	75.0	50.0	25.0	0.0
% EFF	94.85	95.06	95.52	95.53	95.19	92.82	0.00
% PF	84.6	83.94	82.4	77.53	67	44.19	2.93
AMPS	109.35	101.17	89	71.08	55.03	42.78	37.09

TORQ(FL)#FT	220.86	TORQ(LR)%FL	187.39	TORQ(BD)%FL	281.77
AMPS(LR)	562.56	PF AT START	0.32		

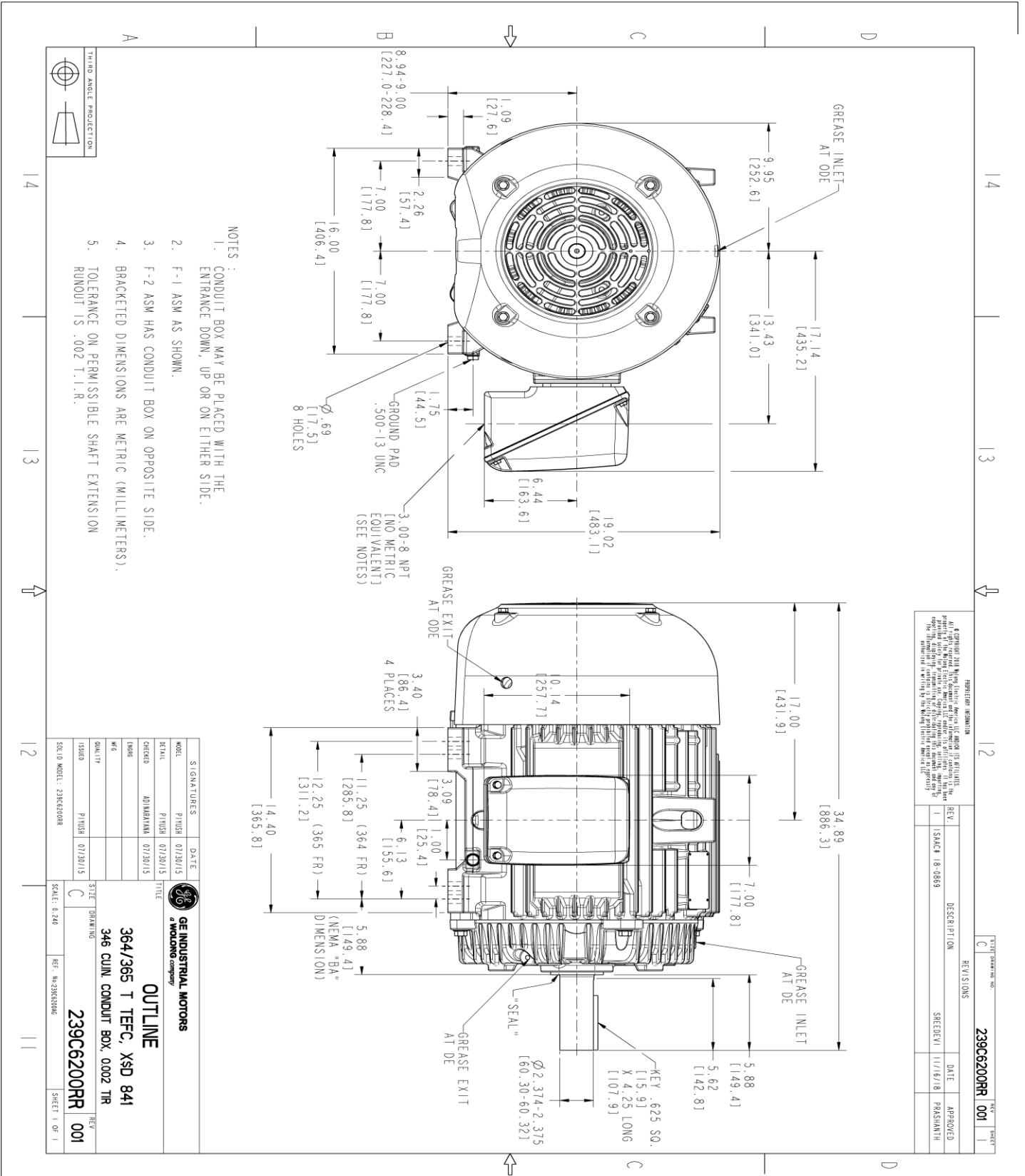
This motor is capable of two cold or one hot start with a maximum connected load inertia of 1432 Lb-Ft Sq (60.29 Kg-meter Sq)at 100% voltage, where the load torque varies with the square of the speed. Acceleration time with maximum inertia and the above load type is 27 seconds. Safe stall time at 100% voltage is 65 seconds cold, 32 seconds hot. Rotor inertia is 15.13 Lb-Ft Sq (0.64 Kg-meter Sq).

Open Circuit A-C:	0.625	Short Circuit D-C:	0.025
Short Circuit A-C:	0.034	X/R Ratio:	9.412
Stator Slots:	60	Rotor Slots:	50

Speed Torque Current Curve (First Connection, First Speed)



Marks:



- NOTES:
- CONDUIT BOX MAY BE PLACED WITH THE ENTRANCE DOWN, UP OR ON EITHER SIDE.
 - F-1 ASM AS SHOWN.
 - F-2 ASM HAS CONDUIT BOX ON OPPOSITE SIDE.
 - BRACKETED DIMENSIONS ARE METRIC (MILLIMETERS).
 - TOLERANCE ON PERMISSIBLE SHAFT EXTENSION RUNOUT IS .002 T.I.R.

REGISTERED INFORMATION
 © Copyright 2018 by GE Industrial Motors, LLC. All rights reserved. This drawing is the property of GE Industrial Motors, LLC. It is to be used for the manufacture of parts and assemblies of GE Industrial Motors, LLC. It is not to be used for any other purpose without the written consent of GE Industrial Motors, LLC. The information contained herein is confidential and proprietary to GE Industrial Motors, LLC.

REV.	DESCRIPTION	DATE	APPROVED
1	ISSUE	11/16/18	PARSHANTH

239C6200RR 001

SIGNATURES	DATE	TITLE
PIUSH	07/20/15	DESIGNER
PIUSH	07/20/15	CHECKED
ADINDAYAKA	07/20/15	DRAWN
		ISSUED
		QUALITY

GE INDUSTRIAL MOTORS
 a WOLONG company
OUTLINE
 364/365 T TFC, XSD 841
 346 CUL CONDUIT BOX, 0002 TR
 239C6200RR
 SCALE: 0.240 REF: M-239K5046
 SHEET 1 OF 1

Marks:

Connection Diagram
GEM2034E-FIG7



End shield Assembly		
Part Description	DE Side Part#	ODE Side Part#
End Shield	115E4250AA1	115E4250LK1
Bearing	235A2524AA01	235A2516AC01
Slinger/Inproseal	235A4575GS3	235A4575GS3

Fan & Fan Cover Assembly	
Part Description	Part#
Fan	159C7100AA1
Fan Cover	128D6810AA1

Conduit & Accessories Box Assembly	
Part Description	Part#
Conduit Box	149C4429AA2

Mechanical Accessories	
Part Description	Part#
Brake	
Tachometer	

