



GE INDUSTRIAL MOTORS
a **WOLONG** company

Product Technical Information

June 25, 2020

Data shown is for the current revision model #. Ensure your nameplate model # matches.

Model Number:	5KS444XAA218B
Catalog Number:	M9615
Instruction Manual:	GEI-56128
Connection Diagram:	GEM2034E-FIG7
Outline Drawing:	239C6600YH

Accessory Connection Diagrams

Bearing Thermocouple:	None	Heater:	None
RTD:	None	Thermistor:	None
Thermostat:	None	Winding Thermocouple:	None
Bearing RTD:	None		

Table of Contents

Specification	01
Performance Characteristics	02
Outline Drawing	03
Connection Drawing(s)	04
Spare parts	05

Marks:

MODEL NUMBER:	5KS444XAA218B	Estimated Weight:	1810 Lbs
Outline Drawing:	239C6600YH	Time Rating:	CONT
Connection Diagram:	GEM2034E-FIG7	Enclosure:	TEFC
Instruction Book:	GEI-56128	Encl Construction:	841
Design Code:	44BD1156A	Ambient Max(°C):	40
Type:	KS	Alt Ambient Max(°C):	--
Frame:	444TS	Insulation Class:	H
Phases:	3	NEMA Design:	B
Poles:	4	Nominal Efficiency:	95.4 %
Output Power:	125HP 92.5KW	Guaranteed Efficiency:	95.0 %
RPM:	1785	3/4 Load Efficiency:	95.7 %
Voltage:	460	KVA Code:	G
Hertz:	60	Max KVAR:	39.8
Amps - FL:	145.0	Power Factor:	84.5
Service Factor:	1.15	Bearing - DE:	6318ZC3
Alt Service Factor:	--	Bearing - ODE:	6318ZC3

Enclosure is Totally Enclosed Fan-Cooled

Stamped Nameplate Notes:

IEEE-STD-841-2009
 DE BRG 90BC03JP3, ODE BRG 90BC03JP3
 STAMP NP249A5564P051 AS BELOW:
 MODEL:5KS444XAA218B S/N: XXX
 CSA CERTIFIED CSA09.2216219 FOR EX NA IIC 200 C GC
 CL 1 ZONE2 AEX NA IIC 200C;CL 1 DIV2 GRP ABCD 200C
 IN -25C <= AMB <= 40C, 1.0 SF ON SINE-WAVE PWR
 SURF TEMP 215C AT 1.15SF ON SINE-WAVE PWR
 OR 200 C VT OR 230 C CT OR 260 C CHP PWM CONTROL
 ALTERNATE RATING FOR PWM CONTROL 1.0SF 40C AMB
 VT 0-60 HZ, CT 6.7-60 HZ, CHP 60-90 HZ.



Additional Information:

4P - TS EXTN
PAINTED FRAME ID & SHAFT,
FAN COVER INSIDE & ODE E/S OUTSIDE
700 CU IN - 3.00" NPT
INPRO SEAL BOTH ENDS
OIL RESISTANT SLEEVING ON LEADS
.0015" TIR SHAFT RUNOUT
ROUTINE TEST REPORT AND 5 POINT VIBRATION TEST
REPORT INCLUDED IN C/B
COPPER WASHER UNDER HEADS OF BEARING CAP BOLTS,
APPLY TITE-SEAL (A50CD427A) ON BEARING CAP SCREWS,
RABBETS AND PLUG THREADS.
GROUND PAD
F1 MOUNTING



Performance Characteristics

1st Winding 1st Connection

Design: 44BD1156A

Marks:

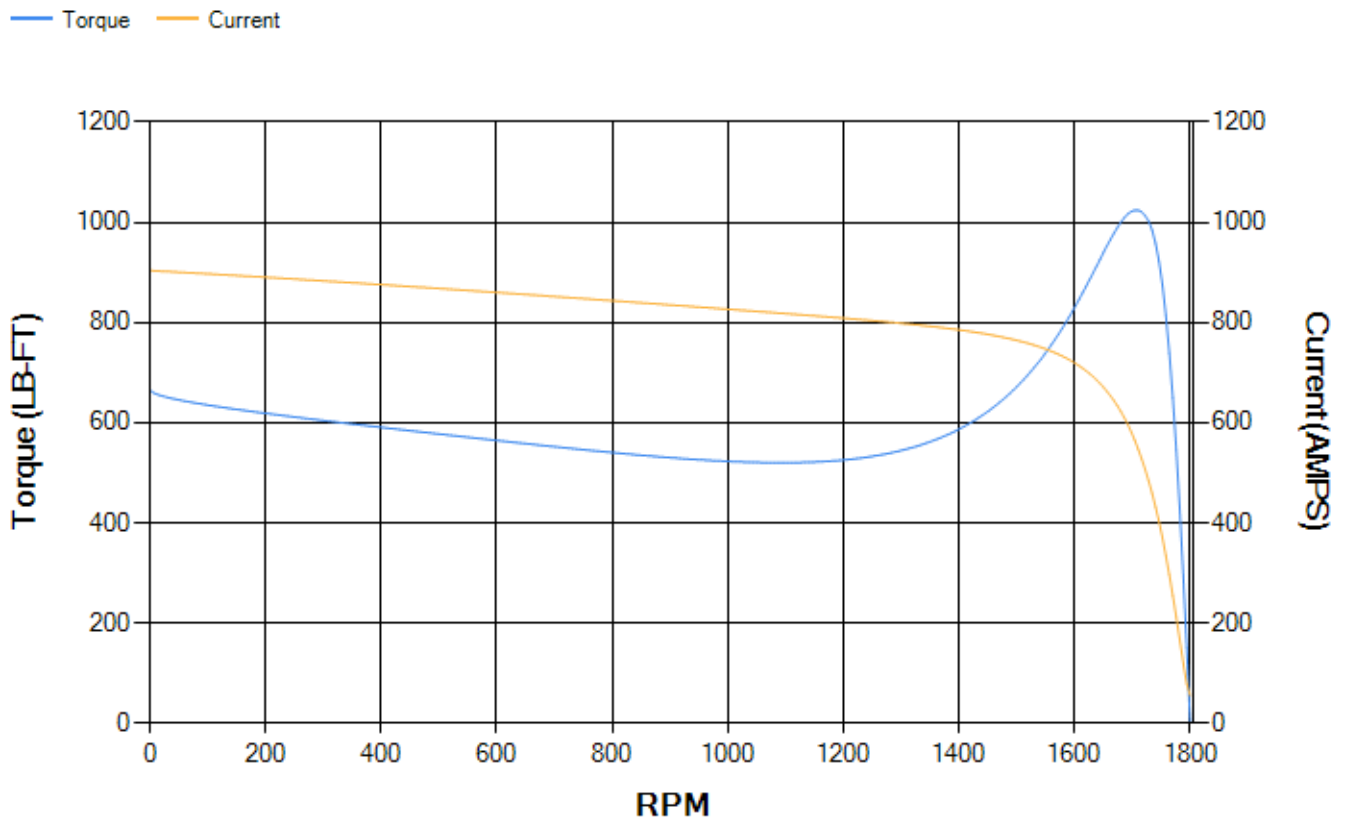
LOAD %	125.0	115.0	100.0	75.0	50.0	25.0	0.0
% EFF	95.06	95.26	95.69	95.67	95.3	92.94	0.00
% PF	86.35	85.84	84.59	80.38	70.75	48.14	3.4
AMPS	178.16	164.53	144.55	114.1	86.75	65.37	55.54

TORQ(FL)#FT	368.12	TORQ(LR)%FL	181	TORQ(BD)%FL	277.86
AMPS(LR)	903.79	PF AT START	0.32		

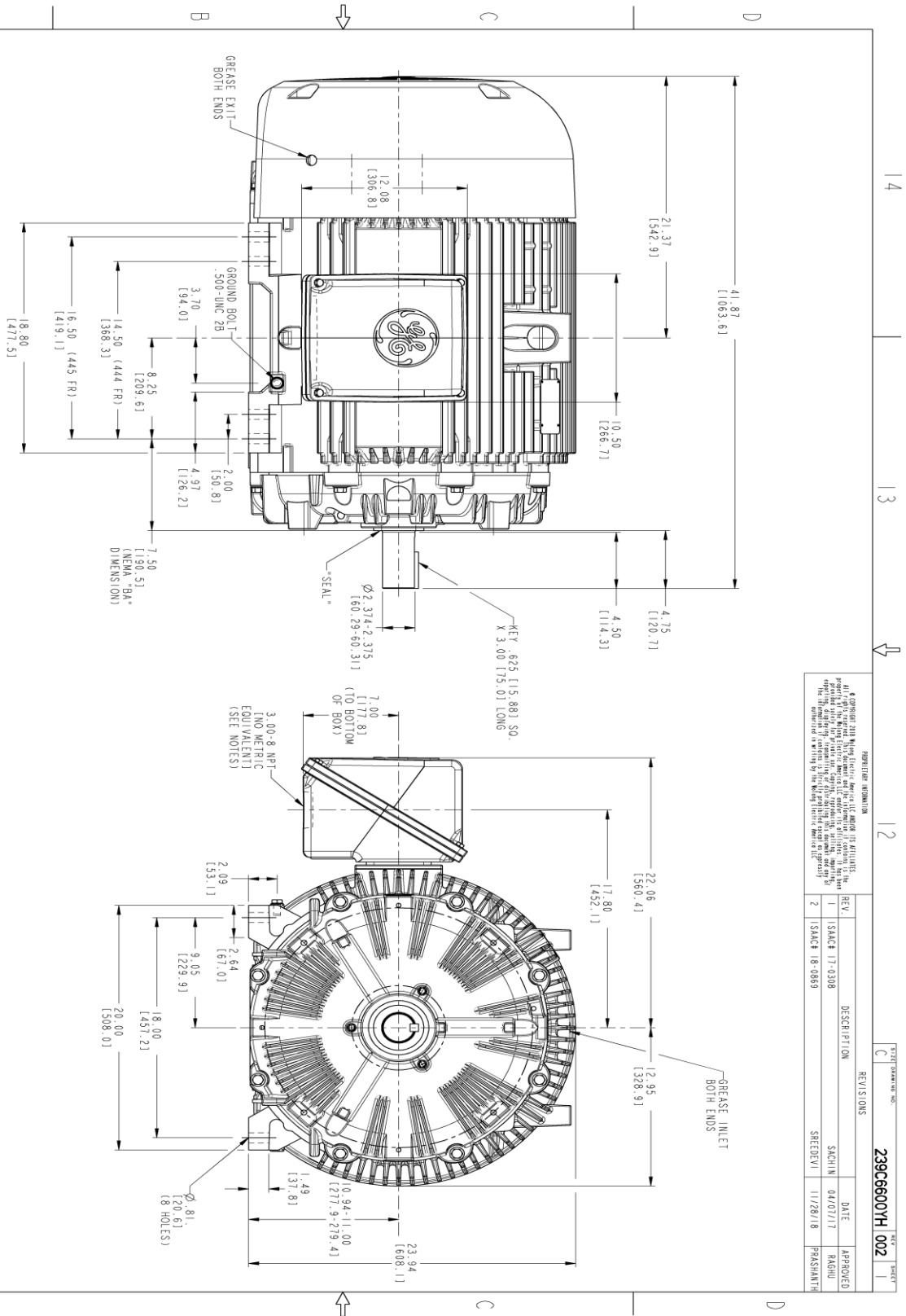
This motor is capable of two cold or one hot start with a maximum connected load inertia of 1902 Lb-Ft Sq (80.07 Kg-meter Sq)at 100% voltage, where the load torque varies with the square of the speed. Acceleration time with maximum inertia and the above load type is 23 seconds. Safe stall time at 100% voltage is 55 seconds cold, 28 seconds hot. Rotor inertia is 47.44 Lb-Ft Sq (2 Kg-meter Sq).

Open Circuit A-C:	0.686	Short Circuit D-C:	0.028
Short Circuit A-C:	0.039	X/R Ratio:	10.63
Stator Slots:	72	Rotor Slots:	58

Speed Torque Current Curve (First Connection, First Speed)



Marks:



NOTES:

1. CONDUIT BOX MAY BE PLACED WITH THE ENTRANCE DOWN, UP OR ON EITHER SIDE.
2. F-1 ASSEMBLY AS SHOWN.
3. F-2 ASSEMBLY-CONDUIT BOX ON OPPOSITE SIDE.
4. BRACKETED DIMENSIONS ARE METRIC (MILLIMETERS).
5. TOLERANCE ON PERMISSIBLE SHAFT EXTENSION ROUNDOFF IS .0015 T.I.R.

REGISTRATION INFORMATION
 © Copyright 2018 GE Industrial Motors. All rights reserved. This drawing is the property of GE Industrial Motors. It is to be used for the design and construction of the motor only. It is not to be used for any other purpose without the written permission of GE Industrial Motors. The information contained herein is confidential and proprietary to GE Industrial Motors.

REV.	DESCRIPTION	DATE	APPROVED
1	ISACH 17-0308	04/07/17	RAGHU
2	ISACH 18-0859	11/28/18	PRASHANTH

SIGNATURES	DATE	TITLE
MODEL: TEJANI	06/29/15	<p>GE INDUSTRIAL MOTORS a WOLONG company</p> <p>OUTLINE</p> <p>444/445 TS TEFC XSD 841</p> <p>700 CU. IN. CONDUIT BOX, .0015 SHAFT ROUNDOFF</p> <p>239C6600YH</p>
REV. 1: TEJANI	06/29/15	
CHECKED: HIRSHMAN	06/29/15	
DATE: TEJANI	06/29/15	
SCALE: 0.200		

SIZE: DRAWING

REF. NO.: 239C6600YH

SHEET 1 OF 1

Marks:

Connection Diagram
GEM2034E-FIG7



End shield Assembly		
Part Description	DE Side Part#	ODE Side Part#
End Shield	115E4355AA1	115E4355LM1
Bearing	235A2514AG01	235A2514AG01
Slinger/Inproseal	235A4575HD4	235A4575GS5

Fan & Fan Cover Assembly	
Part Description	Part#
Fan	159C7100AA2
Fan Cover	128D6841AA1

Conduit & Accessories Box Assembly	
Part Description	Part#
Conduit Box	118D4408AD2

Mechanical Accessories	
Part Description	Part#
Brake	
Tachometer	

