



GE INDUSTRIAL MOTORS
a **WOLONG** company

Product Technical Information

June 25, 2020

Data shown is for the current revision model #. Ensure your nameplate model # matches.

Model Number:	5KS445XAA404D5
Catalog Number:	M9695
Instruction Manual:	GEI-56128
Connection Diagram:	GEM2034E-FIG7
Outline Drawing:	239C6600YF

Accessory Connection Diagrams

Bearing Thermocouple:	None	Heater:	None
RTD:	None	Thermistor:	None
Thermostat:	None	Winding Thermocouple:	None
Bearing RTD:	None		

Table of Contents

Specification	01
Performance Characteristics	02
Outline Drawing	03
Connection Drawing(s)	04
Spare parts	05

Marks:

MODEL NUMBER: 5KS445XAA404D5
Outline Drawing: 239C6600YF
Connection Diagram: GEM2034E-FIG7
Instruction Book: GEI-56128
Design Code: 44BD4022B
Type: KS
Frame: 445T
Phases: 3
Poles: 8
Output Power: 100HP 74KW
RPM: 890
Voltage: 575
Hertz: 60
Amps - FL: 106.0
Service Factor: 1.15
Alt Service Factor: --

Estimated Weight: 1860 Lbs
Time Rating: CONT
Enclosure: TEFC
Encl Construction: 841
Ambient Max(°C): 40
Alt Ambient Max(°C): --
Insulation Class: H
NEMA Design: B
Nominal Efficiency: 94.5 %
Guaranteed Efficiency: 94.1 %
3/4 Load Efficiency: 94.6 %
KVA Code: G
Max KVAR: 46.8
Power Factor: 75.0
Bearing - DE: 6318ZC3
Bearing - ODE: 6318ZC3

Enclosure is Totally Enclosed Fan-Cooled

Stamped Nameplate Notes:

IEEE-STD-841-2009

DE BRG 90BC03JP3, ODE BRG 90BC03JP3

STAMP NP249A5564P051 AS BELOW:

MODEL:5KS445XAA404D5 S/N: XXX

CSA CERTIFIED CSA09.2216219 FOR EX NA IIC 200 C GC

CL 1 ZONE2 AEX NA IIC 200C;CL 1 DIV2 GRP ABCD 200C

IN -25C <= AMB <= 40C, 1.0 SF ON SINE-WAVE PWR

SURF TEMP 215C AT 1.15SF ON SINE-WAVE PWR

OR 200C VT OR 230C CT OR 200C CHP PWM CONTROL

ALTERNATE RATING FOR PWM CONTROL 1.0SF 40C AMB

VT 0 - 60 HZ, CT 15-60 HZ, CHP 60-90 HZ.



Additional Information:

8P - T EXTN
PAINTED FRAME ID & SHAFT,
FAN COVER INSIDE & ODE E/S OUTSIDE
700 CU IN - 3.00" NPT
INPRO SEAL BOTH ENDS
OIL RESISTANT SLEEVING ON LEADS
.0015" TIR SHAFT RUNOUT
ROUTINE TEST REPORT AND 5 POINT VIBRATION TEST
REPORT INCLUDED IN C/B
COPPER WASHER UNDER HEADS OF BEARING CAP BOLTS,
APPLY TITE-SEAL (A50CD427A) ON BEARING CAP SCREWS,
RABBETS AND PLUG THREADS.
GROUND PAD
F1 MOUNTING



Performance Characteristics

1st Winding 1st Connection

Design: 44BD402B

Marks:

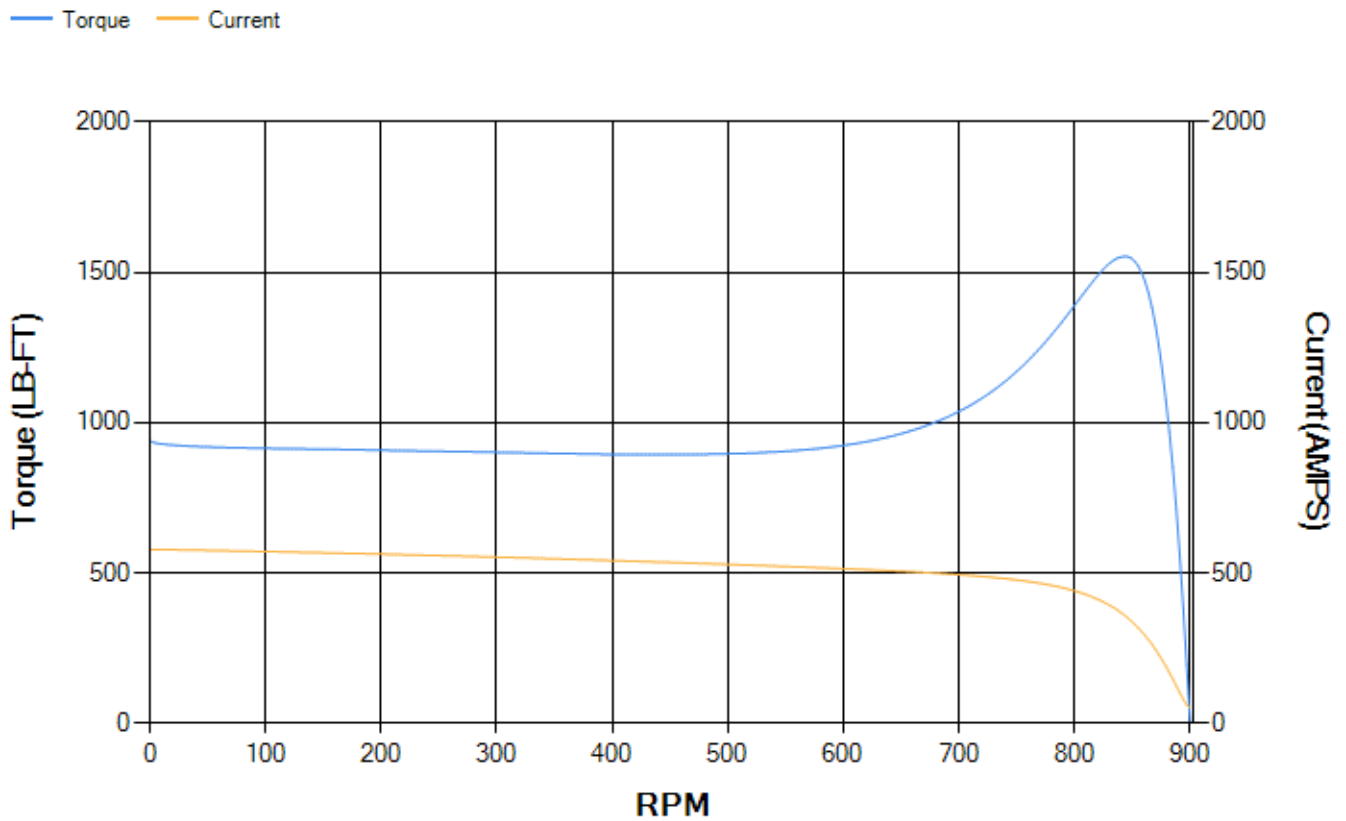
LOAD %	125.0	115.0	100.0	75.0	50.0	25.0	0.0
% EFF	94.16	94.36	94.77	94.6	93.86	90.39	0.00
% PF	77.76	76.92	74.96	69	57.36	35.98	3.31
AMPS	127.82	118.63	105.4	86.03	69.54	57.56	52.23

TORQ(FL)#FT	590.34	TORQ(LR)%FL	159.31	TORQ(BD)%FL	262.5
AMPS(LR)	578.25	PF AT START	0.33		

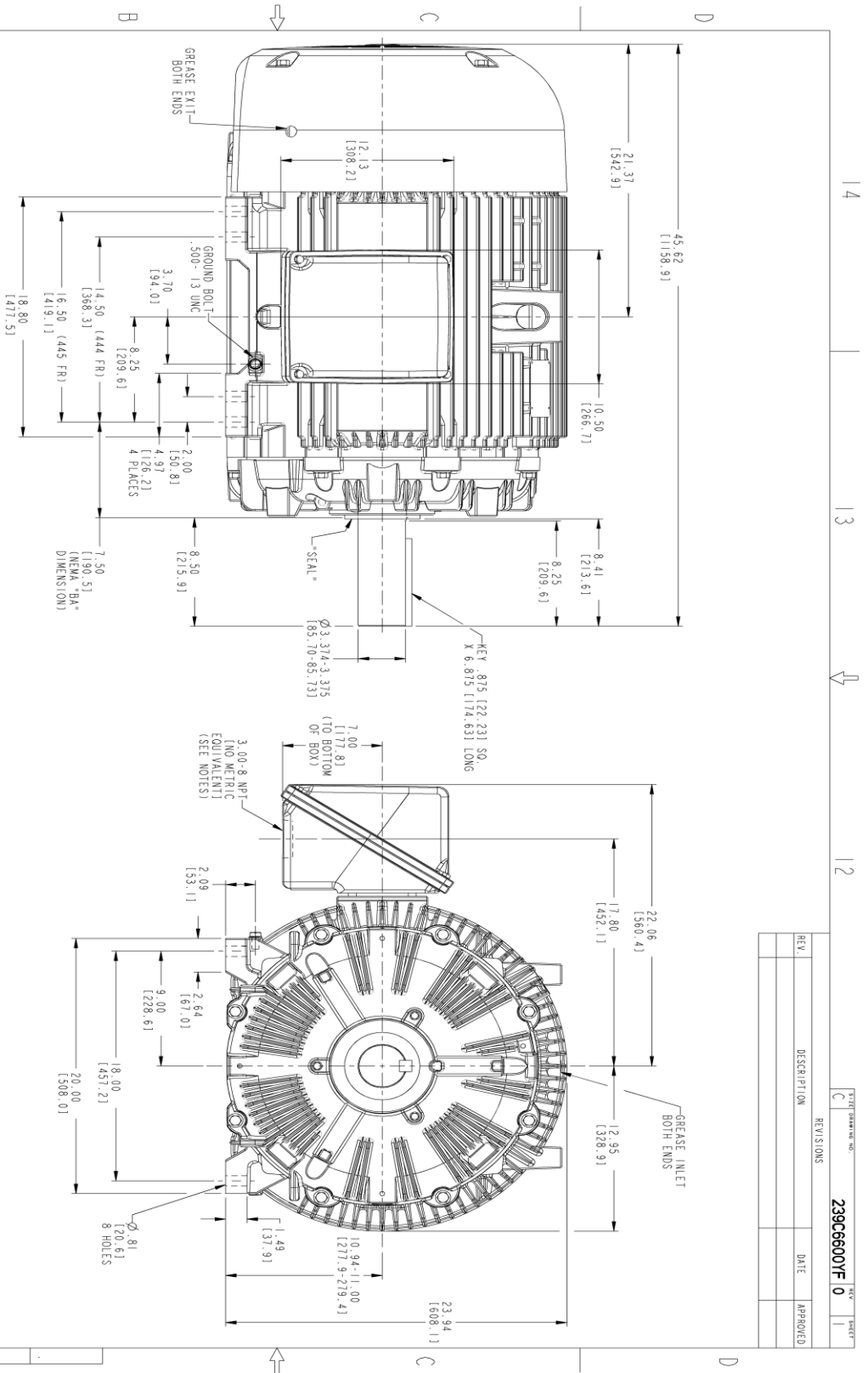
This motor is capable of two cold or one hot start with a maximum connected load inertia of 12769 Lb-Ft Sq (537.57 Kg-meter Sq)at 100% voltage, where the load torque varies with the square of the speed. Acceleration time with maximum inertia and the above load type is 47 seconds. Safe stall time at 100% voltage is 108 seconds cold, 56 seconds hot. Rotor inertia is 75.92 Lb-Ft Sq (3.2 Kg-meter Sq).

Open Circuit A-C:	0.41	Short Circuit D-C:	0.029
Short Circuit A-C:	0.032	X/R Ratio:	11.093
Stator Slots:	72	Rotor Slots:	58

Speed Torque Current Curve (First Connection, First Speed)

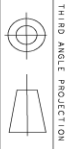


Marks:



NOTES:

1. CONDUIT BOX MAY BE PLACED WITH THE ENTRANCE DOWN, UP OR ON EITHER.
2. F-1 ASSEMBLY AS SHOWN.
3. F-2 ASSEMBLY CONDUIT BOX ON OPPOSITE SIDE.
4. ALL DIMENSIONS ARE IN INCHES. BRACKETED DIMENSIONS ARE METRIC (MILLIMETERS).
5. TOLERANCE ON PERMISSIBLE SHAFT EXTENSION MINIMUM IS .0015" I, I, R.



TITLE		REV	
DRAWING NO.		SHEET	
C		1	
239C6600YF 0			
REV.	DESCRIPTION	DATE	APPROVED

SIGNATURES		DATE	
MODEL	TEJANI	06/29/15	
DETAIL	TEJANI	06/29/15	
CHECKED	HANDEMAN	06/29/15	
DESIGN	VENKAT	06/29/15	
QUALITY			
ISSUED	TEJANI	06/29/15	
SIZE		DRAWING	
C			
SCALE: 0.200			
REF. No.: 239C6600AG			
DISTRIBUTION: MMP			

GENERAL ELECTRIC COMPANY

OUTLINE

444/445 T TEFC XSD 841

700 CU. IN. CONDUIT BOX, INPRO SEAL

239C6600YF 0

SHEET 1 OF 1

Marks:

Connection Diagram
GEM2034E-FIG7



End shield Assembly		
Part Description	DE Side Part#	ODE Side Part#
End Shield	115E4355AA1	115E4355LM1
Bearing	235A2514AG01	235A2514AG01
Slinger/Inproseal	235A4575GS5	235A4575GS5

Fan & Fan Cover Assembly	
Part Description	Part#
Fan	159C7100G03
Fan Cover	128D6841AA1

Conduit & Accessories Box Assembly	
Part Description	Part#
Conduit Box	118D4408AD2

Mechanical Accessories	
Part Description	Part#
Brake	
Tachometer	

