



GE INDUSTRIAL MOTORS
a **WOLONG** company

Product Technical Information

May 6, 2021

Data shown is for the current revision model #. Ensure your nameplate model # matches.

Model Number:	5KS445SAA408D5
Catalog Number:	M9782
Instruction Manual:	GEI-56128
Connection Diagram:	GEM2034E-FIG7
Outline Drawing:	239C6600GX

Accessory Connection Diagrams

Bearing Thermocouple:	None	Heater:	None
RTD:	None	Thermistor:	None
Thermostat:	None	Winding Thermocouple:	None
Bearing RTD:	None		

Table of Contents

Specification	01
Performance Characteristics	02
Outline Drawing	03
Connection Drawing(s)	04
Spare parts	05

Marks:

MODEL NUMBER:	5KS445SAA408D5	Estimated Weight:	1830 Lbs
Outline Drawing:	239C6600GX	Time Rating:	CONT
Connection Diagram:	GEM2034E-FIG7	Enclosure:	TEFC
Instruction Book:	GEI-56128	Encl Construction:	841
Design Code:	44BD4012A	Ambient Max(°C):	40
Type:	KS	Alt Ambient Max(°C):	--
Frame:	445T	Insulation Class:	H
Phases:	3	NEMA Design:	B
Poles:	8	Nominal Efficiency:	94.1 %
Output Power:	100HP 74KW	Guaranteed Efficiency:	93.6 %
RPM:	890	3/4 Load Efficiency:	--
Voltage:	460	KVA Code:	G
Hertz:	60	Max KVAR:	44.6
Amps - FL:	132.0	Power Factor:	75.5
Service Factor:	1.15	Bearing - DE:	6318ZC3
Alt Service Factor:	--	Bearing - ODE:	6318ZC3

Enclosure is Totally Enclosed Fan-Cooled

Stamped Nameplate Notes:

IEEE-STD-841-2009

DE BRG 90BC03JP3, ODE BRG 90BC03JP3

STAMP NP249A5564P051 AS BELOW:

MODEL:5KS445SAA408D5 S/N: XXX

CSA CERTIFIED CSA09.2216219 FOR EX NA IIC 200 C GC

CL 1 ZONE2 AEX NA IIC 200C;CL 1 DIV2 GRP ABCD 200C

IN -40C <= AMB <= 40C, 1.0 SF ON SINE-WAVE PWR

SURF TEMP 260C AT 1.15SF ON SINE-WAVE PWR

OR 200C VT OR 230C CT OR 200C CHP PWM CONTROL

ALTERNATE RATING FOR PWM CONTROL 1.0SF 40C AMB

VT 0 - 60 HZ, CT 30 - 60 HZ, CHP 60 - 90 HZ.



Additional Information:

8P - T EXTN
PAINTED FRAME ID & SHAFT,
FAN COVER INSIDE & ODE E/S OUTSIDE
C/BOX 700 CU IN - 3.00" NPT
OIL RESISTANT SLEEVING ON LEADS
.0015" TIR SHAFT RUNOUT
ROUTINE TEST REPORT AND 5 POINT VIBRATION TEST
REPORT INCLUDED IN C/B
GROUND PAD
F1 MOUNTING



Performance Characteristics

1st Winding 1st Connection

Design: 44BD4012A

Marks:

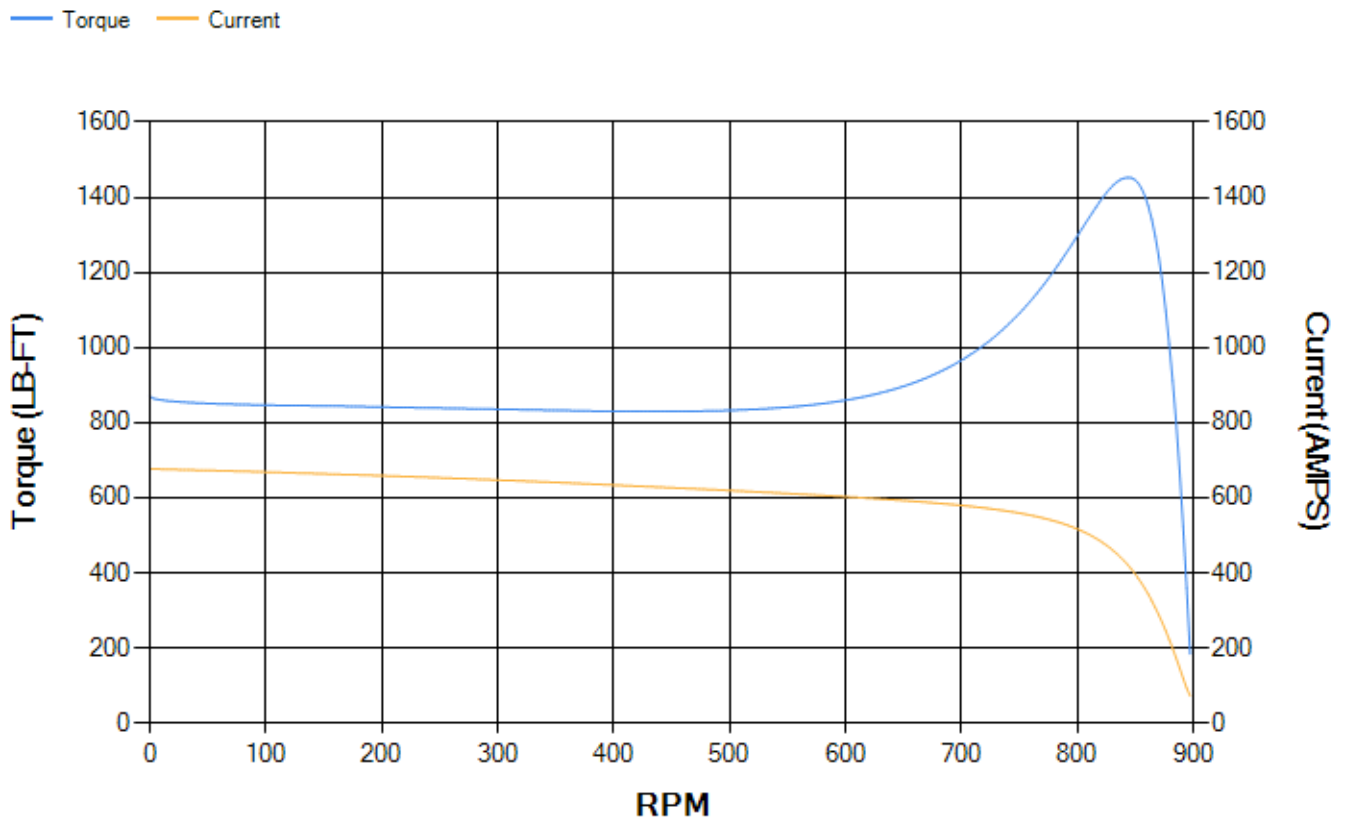
LOAD %	125.0	115.0	100.0	75.0	50.0	25.0	0.0
% EFF	93.78	94.03	94.52	94.46	93.84	90.53	0.00
% PF	78.01	77.35	75.66	70.17	58.92	37.4	3.37
AMPS	159.92	147.98	130.88	105.9	84.64	69.11	62.2

TORQ(FL)#FT 591.06 **TORQ(LR)%FL** 147.31 **TORQ(BD)%FL** 245.3
AMPS(LR) 676.79 **PF AT START** 0.33

This motor is capable of two cold or one hot start with a maximum connected load inertia of 10736 Lb-Ft Sq (451.99 Kg-meter Sq)at 100% voltage, where the load torque varies with the square of the speed. Acceleration time with maximum inertia and the above load type is 43 seconds. Safe stall time at 100% voltage is 106 seconds cold, 52 seconds hot. Rotor inertia is 71.02 Lb-Ft Sq (2.99 Kg-meter Sq).

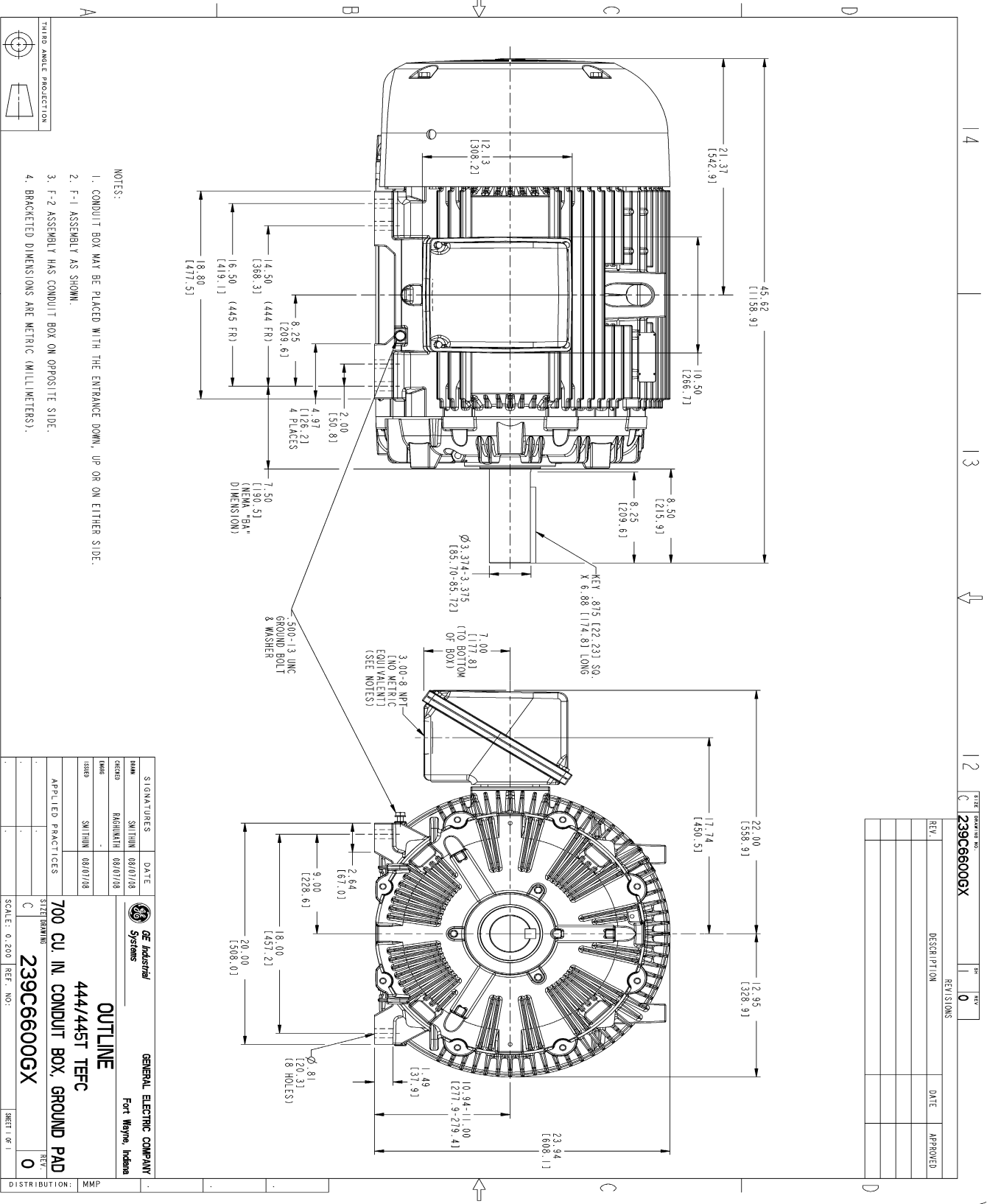
Open Circuit A-C: 0.395 **Short Circuit D-C:** 0.028
Short Circuit A-C: 0.032 **X/R Ratio:** 10.634
Stator Slots: 72 **Rotor Slots:** 58

Speed Torque Current Curve (First Connection, First Speed)



NAME:501291659 OBJECT:239C6600GX DATE:07-Aug-08 17:33:22

Marks:



Marks:

Connection Diagram
GEM2034E-FIG7



End shield Assembly		
Part Description	DE Side Part#	ODE Side Part#
End Shield	115E4355AA1	115E4355LM1
Bearing	235A2514AG01	235A2514AG01
Slinger/Inproseal	149C4399G07	149C4399G07

Fan & Fan Cover Assembly	
Part Description	Part#
Fan	159C7100G03
Fan Cover	128D6841AA1

Conduit & Accessories Box Assembly	
Part Description	Part#
Conduit Box	118D4408AD2

Mechanical Accessories	
Part Description	Part#
Brake	
Tachometer	

