



GE INDUSTRIAL MOTORS
a **WOLONG** company

Product Technical Information

February 12, 2021

Data shown is for the current revision model #. Ensure your nameplate model # matches.

Model Number:	5KS447SAA408D6
Catalog Number:	M9784
Instruction Manual:	GEI-56128
Connection Diagram:	GEM2034E-FIG7
Outline Drawing:	239C6800ARA

Accessory Connection Diagrams

Bearing Thermocouple:	None	Heater:	None
RTD:	None	Thermistor:	None
Thermostat:	None	Winding Thermocouple:	None
Bearing RTD:	None		

Table of Contents

Specification	01
Performance Characteristics	02
Outline Drawing	03
Connection Drawing(s)	04
Spare parts	05

Marks:

MODEL NUMBER: 5KS447SAA408D6
Outline Drawing: 239C6800ARA
Connection Diagram: GEM2034E-FIG7
Instruction Book: GEI-56128
Design Code: 49BD4024A
Type: KS
Frame: 447T
Phases: 3
Poles: 8
Output Power: 125HP 92.5KW
RPM: 890
Voltage: 460
Hertz: 60
Amps - FL: 158.0
Service Factor: 1.15
Alt Service Factor: --

Estimated Weight: 2420 Lbs
Time Rating: CONT
Enclosure: TEFC
Encl Construction: 841
Ambient Max(°C): 40
Alt Ambient Max(°C): --
Insulation Class: H
NEMA Design: B
Nominal Efficiency: 94.5 %
Guaranteed Efficiency: 94.1 %
3/4 Load Efficiency: --
KVA Code: G
Max KVAR: 48.1
Power Factor: 78.5
Bearing - DE: 6318ZC3
Bearing - ODE: 6318ZC3

Enclosure is Totally Enclosed Fan-Cooled

Stamped Nameplate Notes:

IEEE-STD-841-2009
 DE BRG 90BC03JP3, ODE BRG 90BC03JP3
 STAMP NP249A5564P051 AS BELOW:
 MODEL:5KS447SAA408D6 S/N: XXX
 CSA CERTIFIED CSA09.2216219 FOR EX NA IIC 200 C GC
 CL 1 ZONE2 AEX NA IIC 200C;CL 1 DIV2 GRP ABCD 200C
 IN -40C <= AMB <= 40C, 1.0 SF ON SINE-WAVE PWR
 SURF TEMP 260C AT 1.15SF ON SINE-WAVE PWR
 OR 200C VT OR 230C CT OR 200C CHP PWM CONTROL
 ALTERNATE RATING FOR PWM CONTROL 1.0SF 40C AMB
 VT 0-60 HZ, CT 20-60 HZ, CHP 60-90 HZ.



Additional Information:

8P - T EXTN
PAINTED FRAME ID & SHAFT,
FAN COVER INSIDE & ODE E/S OUTSIDE
C/BOX 700 CU IN - 3.00" NPT
OIL RESISTANT SLEEVING ON LEADS
.0015" TIR SHAFT RUNOUT
ROUTINE TEST REPORT AND 5 POINT VIBRATION TEST
REPORT INCLUDED IN C/B
GROUND PAD
F1 MOUNTING



Performance Characteristics

1st Winding 1st Connection

Design: 49BD4024A

Marks:

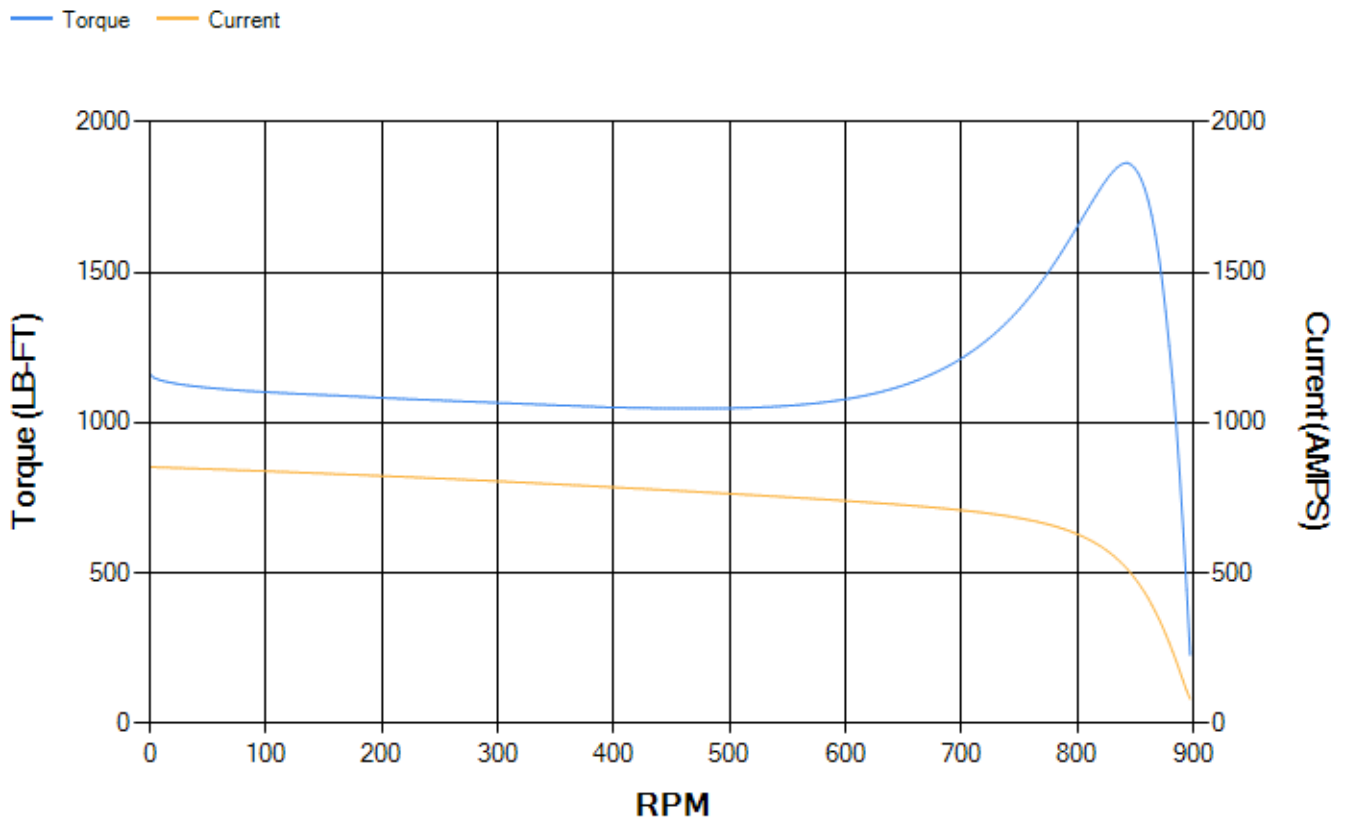
LOAD %	125.0	115.0	100.0	75.0	50.0	25.0	0.0
% EFF	93.94	94.26	94.85	95.02	94.76	92.36	0.00
% PF	80.06	79.66	78.4	73.78	63.4	41.39	3.01
AMPS	194.44	179.19	157.33	125.16	97.36	76.51	67.07

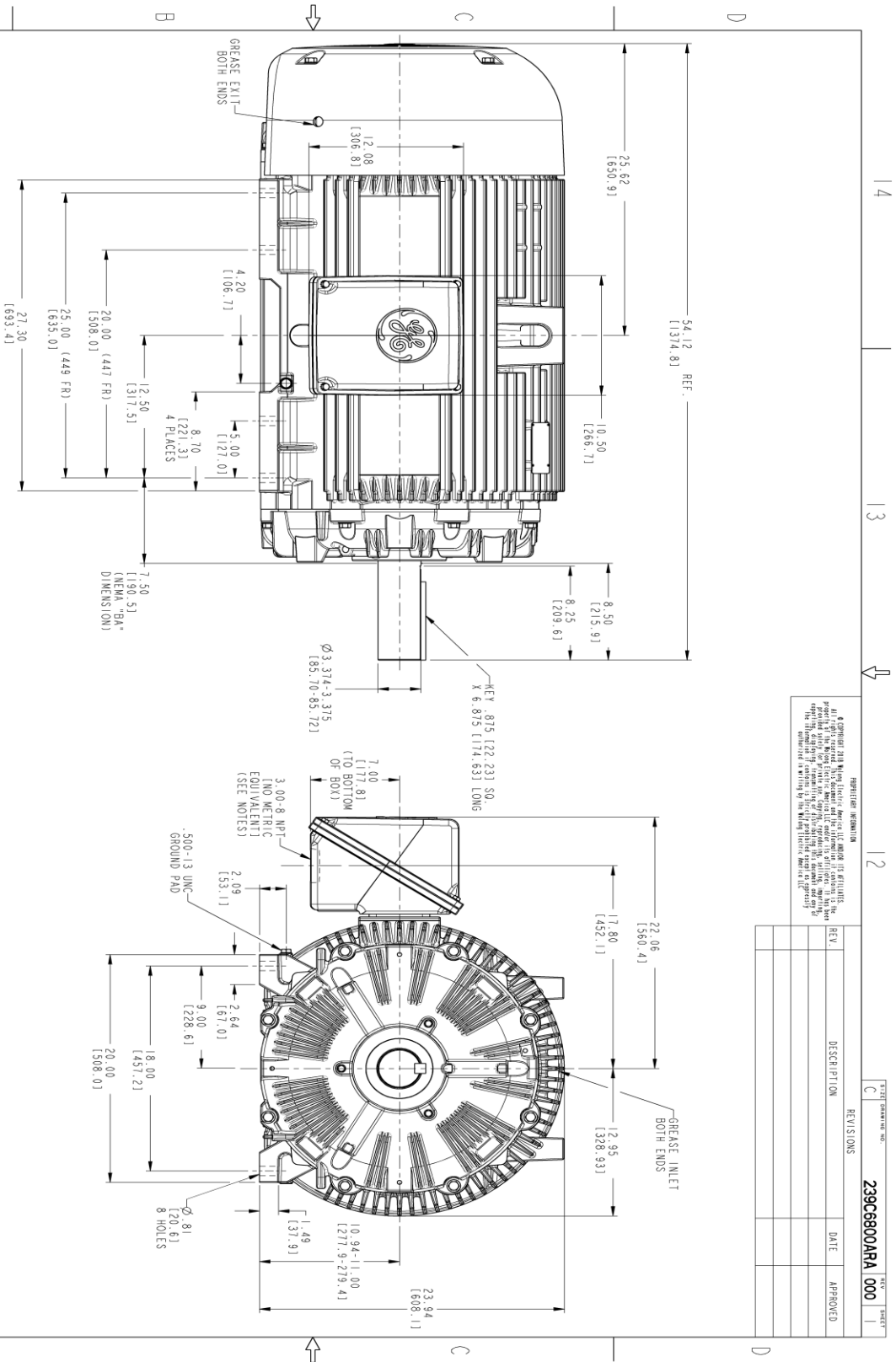
TORQ(FL)#FT 739 **TORQ(LR)%FL** 157.58 **TORQ(BD)%FL** 251.83
AMPS(LR) 852.53 **PF AT START** 0.33

This motor is capable of two cold or one hot start with a maximum connected load inertia of 14120 Lb-Ft Sq (594.45 Kg-meter Sq)at 100% voltage, where the load torque varies with the square of the speed. Acceleration time with maximum inertia and the above load type is 44 seconds. Safe stall time at 100% voltage is 106 seconds cold, 53 seconds hot. Rotor inertia is 102.86 Lb-Ft Sq (4.33 Kg-meter Sq).

Open Circuit A-C: 0.446 **Short Circuit D-C:** 0.03
Short Circuit A-C: 0.031 **X/R Ratio:** 11.302
Stator Slots: 72 **Rotor Slots:** 58

Speed Torque Current Curve (First Connection, First Speed)





- NOTES:
1. CONDUIT BOX MAY BE PLACED WITH THE ENTRANCE DOWN, UP OR ON EITHER SIDE.
 2. F-I ASSEMBLY AS SHOWN.
 3. ALL DIMENSIONS ARE IN INCHES. BRACKETED DIMENSIONS ARE METRIC (MILLIMETERS).



PROPERTY INFORMATION
 GE INDUSTRIAL MOTORS
 1000 GE CENTER DRIVE
 PITTSBURGH, PA 15222
 REV. 10/2019
 THE INFORMATION CONTAINED HEREIN IS UNCLASSIFIED EXCEPT WHERE SHOWN OTHERWISE
 THE INFORMATION CONTAINED HEREIN IS UNCLASSIFIED EXCEPT WHERE SHOWN OTHERWISE

REV.	DESCRIPTION	DATE	APPROVED

SIGNATURES		DATE	
DESIGNED BY	WMSI	11/11/20	
CHECKED BY	WMSI	11/11/20	
DRAWN BY	WMSI	11/11/20	
ISSUED BY	WMSI	11/11/20	
SCALE:	0.180	REF. NO.:	239C6800A
<p>GE INDUSTRIAL MOTORS a WOLONG company</p> <p>OUTLINE 447/449 T TERC 700 CU. IN. C. BOX, GROUND PAD</p> <p>239C6800ARA</p>			
<p>SHEET 1 OF 1</p>			

Marks:

Connection Diagram
GEM2034E-FIG7



End shield Assembly		
Part Description	DE Side Part#	ODE Side Part#
End Shield	115E4355AA1	115E4355LM1
Bearing	235A2514AG01	235A2514AG01
Slinger/Inproseal	149C4399G07	149C4399G07

Fan & Fan Cover Assembly	
Part Description	Part#
Fan	159C7100G03
Fan Cover	128D6841AA1

Conduit & Accessories Box Assembly	
Part Description	Part#
Conduit Box	118D4408AD2

Mechanical Accessories	
Part Description	Part#
Brake	
Tachometer	

