



GE INDUSTRIAL MOTORS
a **WOLONG** company

Product Technical Information

July 6, 2023

Data shown is for the current revision model #. Ensure your nameplate model # matches.

Model Number:	5KS449SAH325A
Catalog Number:	M9811
Instruction Manual:	GEI-56128
Connection Diagram:	GEM2034E-FIG20
Outline Drawing:	239C6900BC

Accessory Connection Diagrams

Bearing Thermocouple:	None	Heater:	None
RTD:	None	Thermistor:	None
Thermostat:	None	Winding Thermocouple:	None
Bearing RTD:	None		

Table of Contents

Specification	01
Performance Characteristics	02
Outline Drawing	03
Connection Drawing(s)	04
Spare parts	05

Marks:

MODEL NUMBER:	5KS449SAH325A	Estimated Weight:	3360 Lbs
Outline Drawing:	239C6900BC	Time Rating:	CONT
Connection Diagram:	GEM2034E-FIG20	Enclosure:	TEFC
Instruction Book:	GEI-56128	Encl Construction:	X\$D
Design Code:	49FD3015A	Ambient Max(°C):	40
Type:	KS	Alt Ambient Max(°C):	--
Frame:	449T	Insulation Class:	H
Phases:	3	NEMA Design:	B
Poles:	6	Nominal Efficiency:	95.8 %
Output Power:	350HP 259KW	Guaranteed Efficiency:	95.0 %
RPM:	1190	3/4 Load Efficiency:	--
Voltage:	460	KVA Code:	G
Hertz:	60	Max KVAR:	108.1
Amps - FL:	414.0	Power Factor:	82.5
Service Factor:	1.00	Bearing - DE:	NU 318
Alt Service Factor:	--	Bearing - ODE:	6318ZC3

Enclosure is Totally Enclosed Fan-Cooled

Stamped Nameplate Notes:

ROLLER BEARING - FOR BELTED LOAD ONLY
 ROT CW FACING ODE LEAD/PH SEQ 1-2-3/1-2-3
 GEIM SELF DECLARED CLASS I DIV2 GR. A,B,C,D MOTOR
 MAX EXPOSED INTERNAL AND EXTERNAL SURFACE
 TEMPERATURES UNDER USUAL SERVICE CONDITIONS
 AT 1.00 S.F. DO NOT EXCEED 200 DEG C
 INVERTER DUTY PER NEMA MG1 PART 31
 ALTERNATE RATING FOR PWM CONTROL:1.0SF 40C AMBIENT
 VAR TORQUE RANGE 0-60 HZ
 MAX RADIAL LOAD: 5200 LBF AT 4.25"
 FROM SHAFT SHOULDER



Additional Information:

6P - T EXTN - SPLIT LEAD
C/BOX 2500 CU IN - 2(4.00" NPT)
C/B GRD PLATE
OIL RESISTANT SLEEVING ON LEADS
B5F4C4 HIGH FATIGUE STEEL AISI 4142 SHAFT MATERIAL
GROUND PAD
F1 MOUNTING
.002" TIR SHAFT RUNOUT
CLASS F RISE AT 1.0 SF
SAME AS 5KS449SAH331 EXCEPT WITH ROLLER BEARING AT DE
PAINTED FRAME ID & SHAFT,
FAN COVER INSIDE & ODE E/S OUTSIDE
ROUTINE TEST REPORT AND 5 POINT VIBRATION TEST
REPORT INCLUDED IN C/B



Performance Characteristics

1st Winding 1st Connection

Design: 49FD3015A

Marks:

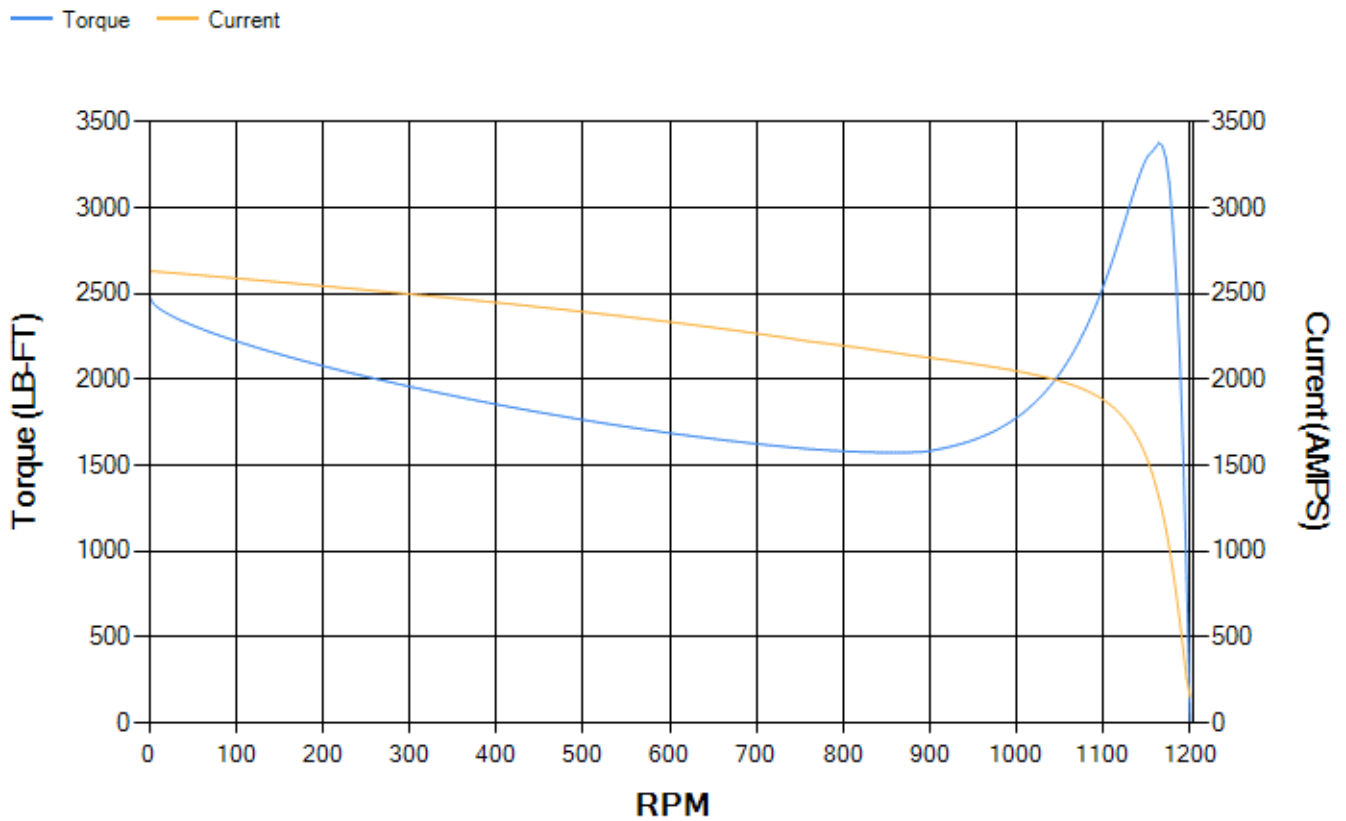
LOAD %	125.0	115.0	100.0	75.0	50.0	25.0	0.0
% EFF	95.72	95.94	96.43	96.54	96.44	94.93	0.00
% PF	83.56	83.36	82.53	78.98	70.05	47.97	2.35
AMPS	511.96	471	411.58	322.22	242.46	179.83	150.76

TORQ(FL)#FT	1543.09	TORQ(LR)%FL	160.94	TORQ(BD)%FL	215.42
AMPS(LR)	2633.22	PF AT START	0.23		

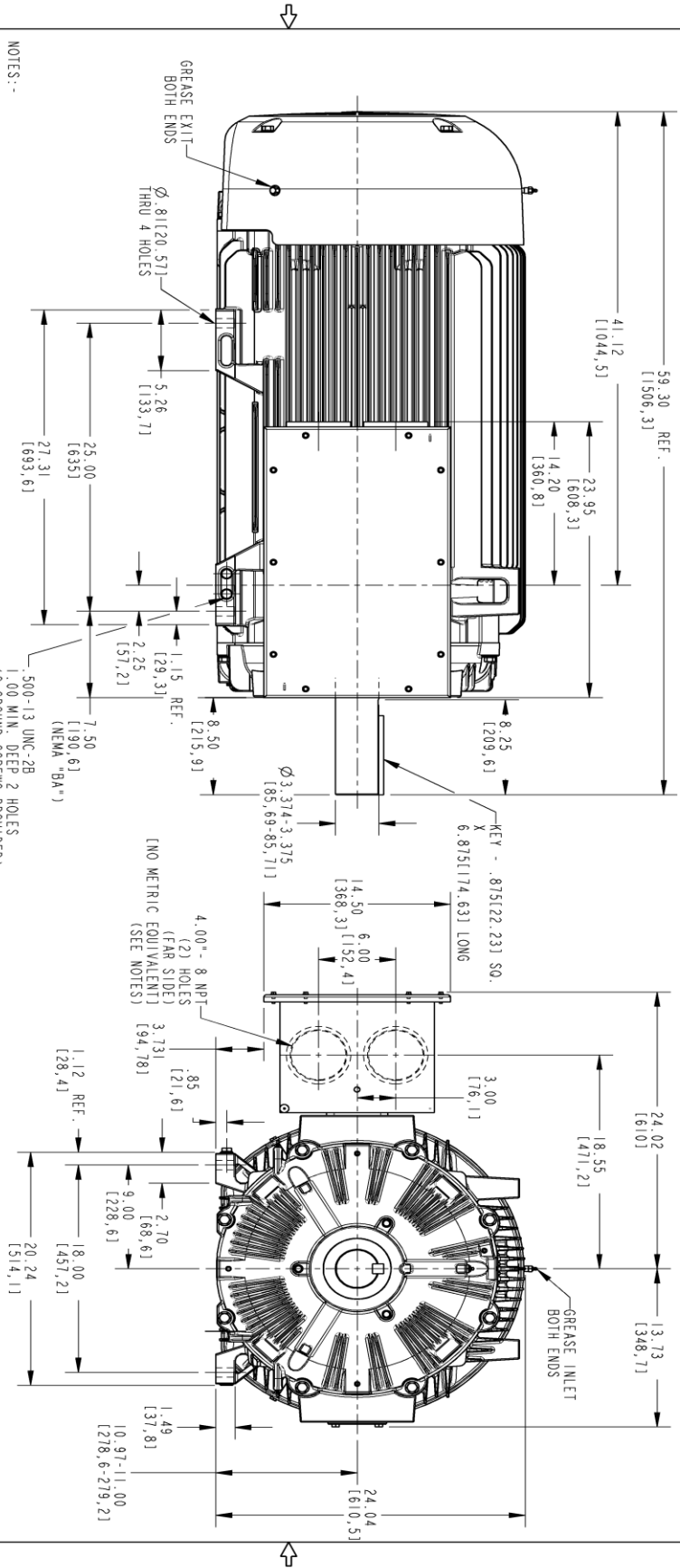
This motor is capable of two cold or one hot start with a maximum connected load inertia of 12130 Lb-Ft Sq (510.67 Kg-meter Sq)at 100% voltage, where the load torque varies with the square of the speed. Acceleration time with maximum inertia and the above load type is 34 seconds. Safe stall time at 100% voltage is 99 seconds cold, 40 seconds hot. Rotor inertia is 233.85 Lb-Ft Sq (9.85 Kg-meter Sq).

Open Circuit A-C:	0.92	Short Circuit D-C:	0.037
Short Circuit A-C:	0.056	X/R Ratio:	13.964
Stator Slots:	72	Rotor Slots:	58

Speed Torque Current Curve (First Connection, First Speed)



Marks:

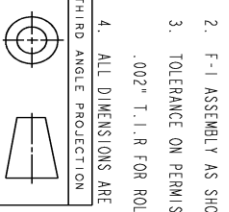


- NOTES:-
1. CONDUIT BOX MAY BE PLACED WITH THE ENTRANCE UP, DOWN OR TO EITHER SIDE, WHEN DOWN ENTRANCE WILL BE BELOW THE FEET.
 2. F-I ASSEMBLY AS SHOWN.
 3. TOLERANCE ON PERMISSIBLE SHAFT EXTENSION RUNOUT IS .0015" T.I.R FOR BALL BEARING/.002" T.I.R FOR ROLLER BEARING
 4. ALL DIMENSIONS ARE IN INCHES. BRACKETED DIMENSIONS ARE IN METRIC (MILLIMETERS).

PROPRIETARY INFORMATION
 © COPYRIGHT 2018 Wolog Electric America LLC AND/OR ITS AFFILIATES
 All rights reserved. This document and the information it contains is the property of the Wolog Electric America LLC and/or its affiliates. It has been provided solely for transmission to the applicable recipient for the sole and exclusive use of the recipient. Its transmission or disclosure to any other person, in any form or by any means, without the express written permission of Wolog Electric America LLC is strictly prohibited except as expressly authorized in writing by the Wolog Electric America LLC.

REV.	DESCRIPTION	DATE	APPROVED

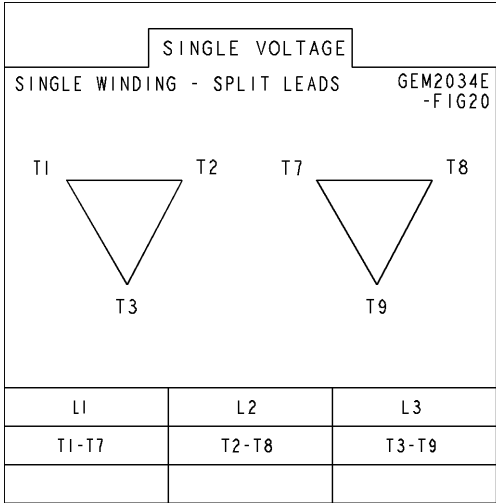
SIZE: DRAWING NO.	B	239C6900BC	000
REV	1	SHEET	1
REVISIONS			



SIGNATURES		DATE	
MODEL	SANTHOSH	05/24/23	
DETAIL	SANTHOSH	05/24/23	
DESIGN	SAGAR	05/24/23	
ENGR	RAJSHUKH	05/24/23	
CHK			
QUALITY			
ISSUED	SANTHOSH	05/24/23	
SOLID MODEL:	239C6900BC	SCALE:	0.120 REF. No.: 239C6900AX
GE INDUSTRIAL MOTORS a Wolog company			
OUTLINE ULTRA 449HD T TEFC 2500 CU IN CONDUIT BOX, GROUND PAD			
239C6900BC		REV	000
SHEET DRAWING		REV	000
B		SHEET	1

Marks:

Connection Diagram
GEM2034E-FIG20



End shield Assembly		
Part Description	DE Side Part#	ODE Side Part#
End Shield	115E4355AA1	115E4355LF1
Bearing	235A2519AA01	235A2614AA01
Slinger/Inproseal	149C4399G07	149C4399G07

Fan & Fan Cover Assembly	
Part Description	Part#
Fan	159C7100G03
Fan Cover	128D6841AA1

Conduit & Accessories Box Assembly	
Part Description	Part#
Conduit Box	179B9098AF-G06

Mechanical Accessories	
Part Description	Part#
Brake	
Tachometer	

