



GE INDUSTRIAL MOTORS
a **WOLONG** company

Product Technical Information

January 31, 2021

Data shown is for the current revision model #. Ensure your nameplate model # matches.

Model Number:	5KS405SAA114D10
Catalog Number:	M9831
Instruction Manual:	GEI-56128
Connection Diagram:	GEM2034E-FIG7
Outline Drawing:	239C6400ZK

Accessory Connection Diagrams

Bearing Thermocouple:	None	Heater:	None
RTD:	None	Thermistor:	None
Thermostat:	None	Winding Thermocouple:	None
Bearing RTD:	None		

Table of Contents

Specification	01
Performance Characteristics	02
Outline Drawing	03
Connection Drawing(s)	04
Spare parts	05

Marks:

MODEL NUMBER:	5KS405SAA114D10	Estimated Weight:	1510 Lbs
Outline Drawing:	239C6400ZK	Time Rating:	CONT
Connection Diagram:	GEM2034E-FIG7	Enclosure:	TEFC
Instruction Book:	GEI-56128	Encl Construction:	841
Design Code:	40BD0052B	Ambient Max(°C):	40
Type:	KS	Alt Ambient Max(°C):	--
Frame:	405TS	Insulation Class:	H
Phases:	3	NEMA Design:	B
Poles:	2	Nominal Efficiency:	95.0 %
Output Power:	100HP 74KW	Guaranteed Efficiency:	94.5 %
RPM:	3565	3/4 Load Efficiency:	--
Voltage:	575	KVA Code:	G
Hertz:	60	Max KVAR:	16.6
Amps - FL:	86.6	Power Factor:	91.0
Service Factor:	1.15	Bearing - DE:	6213ZC3
Alt Service Factor:	--	Bearing - ODE:	6213ZC3

Enclosure is Totally Enclosed Fan-Cooled

Stamped Nameplate Notes:

IEEE-STD-841-2009

DE BRG 65BC02JP30, ODE BRG 65BC02JP30

STAMP NP249A5564P051 AS BELOW:

MODEL:5KS405SAA114D10 S/N: XXX

CSA CERTIFIED CSA09.2216219 FOR EX NA IIC 200 C GC

CL 1 ZONE2 AEX NA IIC 200C;CL 1 DIV2 GRP ABCD 200C

IN -40C <= AMB <= 40C, 1.0 SF ON SINE-WAVE PWR

SURF TEMP 260C AT 1.15SF ON SINE-WAVE PWR

OR 215C VT OR 230C CT OR --- CHP PWM CONTROL

ALTERNATE RATING FOR PWM CONTROL 1.0SF 40C AMB

VT 0 - 60 HZ, CT 8.6 - 60 HZ, CHP -- HZ.



Additional Information:

2P - TS EXTN
PAINTED FRAME ID & SHAFT,
FAN COVER INSIDE & ODE E/S OUTSIDE
C/BOX 700 CU IN - 3.00" NPT
OIL RESISTANT SLEEVING ON LEADS
.0015" TIR SHAFT RUNOUT
ROUTINE TEST REPORT AND 5 POINT VIBRATION TEST
REPORT INCLUDED IN C/B
GROUND PAD
F1 MOUNTING



Performance Characteristics

1st Winding 1st Connection

Design: 40BD0052B

Marks:

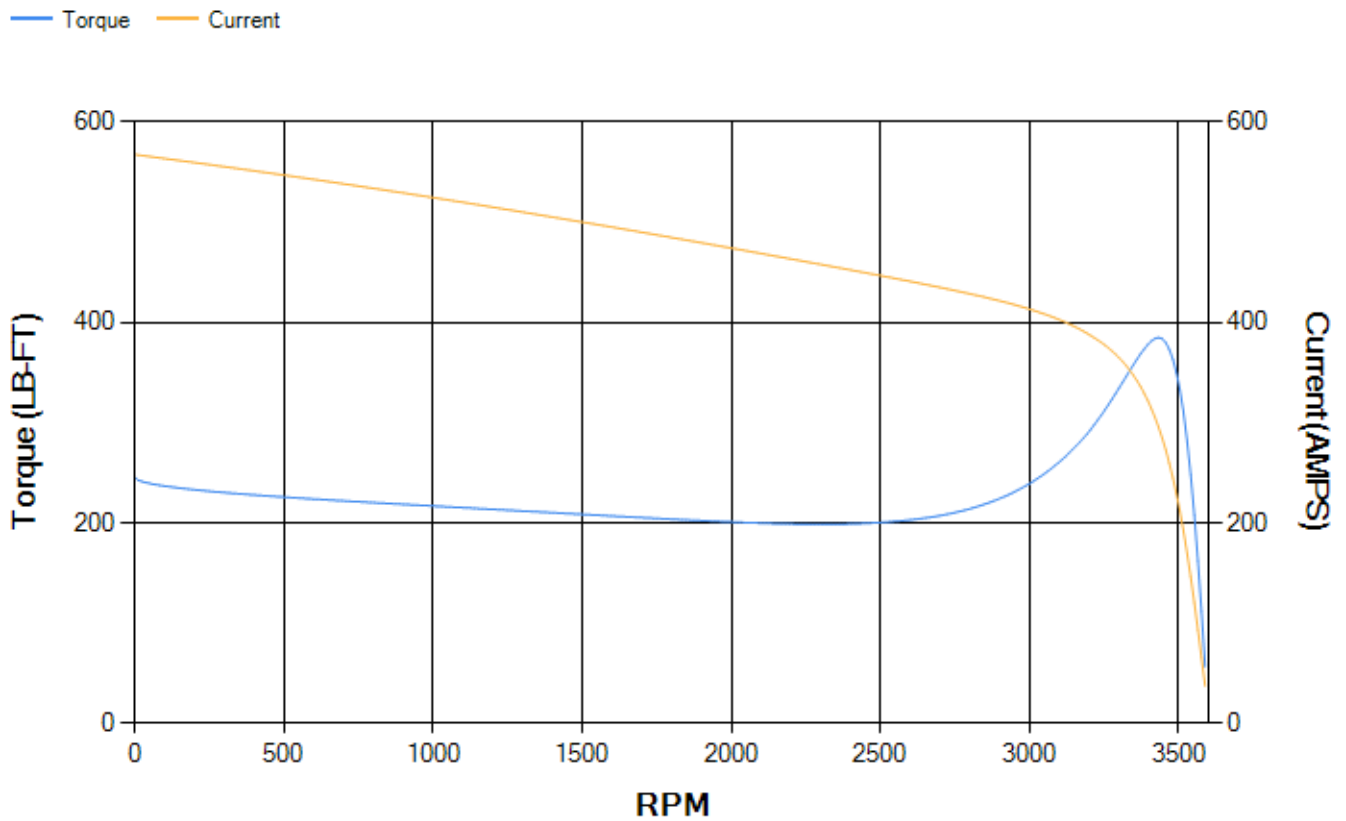
LOAD %	125.0	115.0	100.0	75.0	50.0	25.0	0.0
% EFF	94.68	94.92	95.41	95.46	95.13	92.77	0.00
% PF	90.92	91.14	91.2	90.25	86.32	71.19	6.79
AMPS	108.73	99.54	86.06	65.19	45.59	28.34	18.53

TORQ(FL)#FT	147.36	TORQ(LR)%FL	166.75	TORQ(BD)%FL	261.04
AMPS(LR)	567.74	PF AT START	0.25		

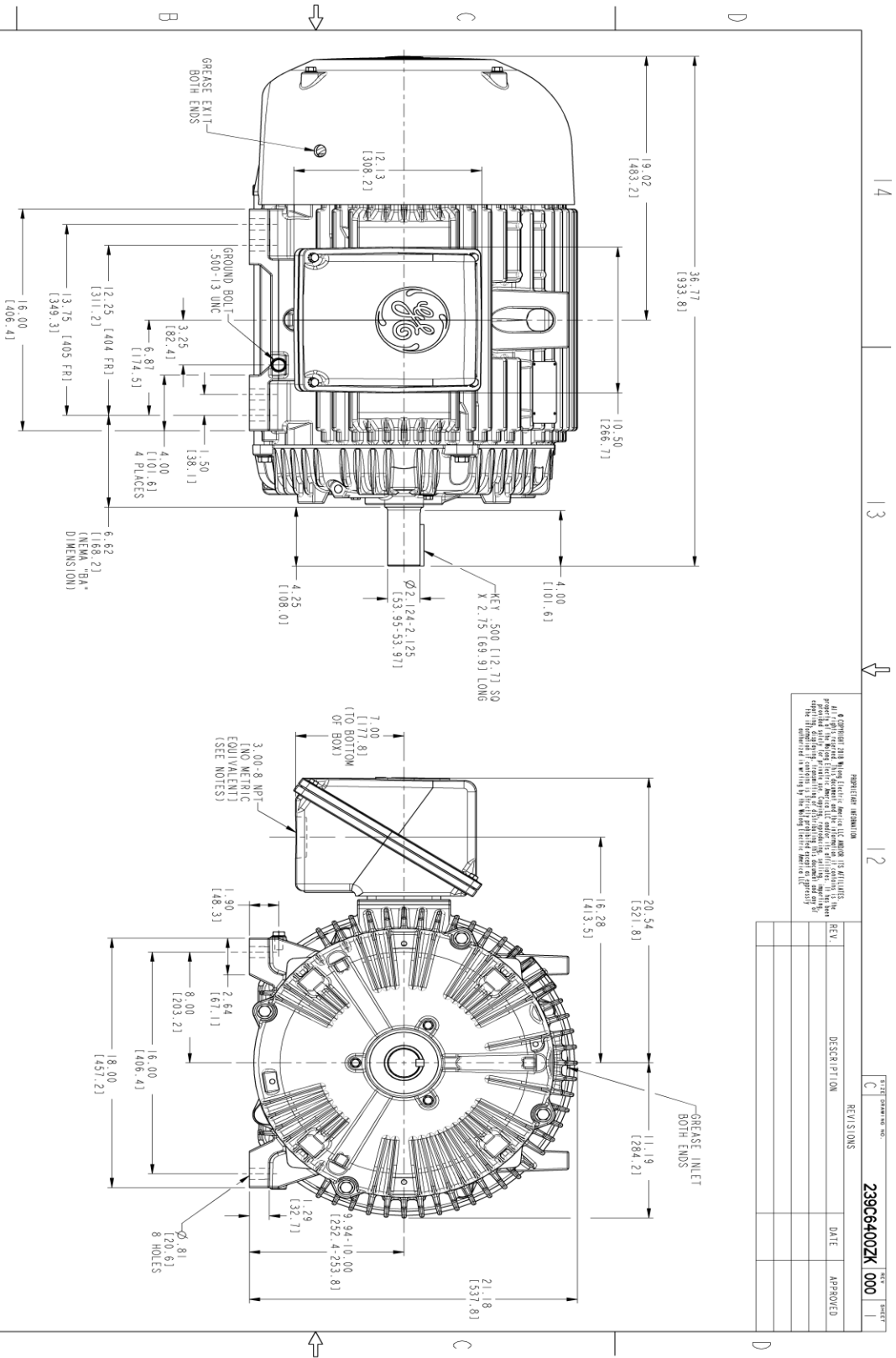
This motor is capable of two cold or one hot start with a maximum connected load inertia of 356 Lb-Ft Sq (14.99 Kg-meter Sq)at 100% voltage, where the load torque varies with the square of the speed. Acceleration time with maximum inertia and the above load type is 24 seconds. Safe stall time at 100% voltage is 58 seconds cold, 29 seconds hot. Rotor inertia is 15.02 Lb-Ft Sq (0.63 Kg-meter Sq).

Open Circuit A-C:	1.209	Short Circuit D-C:	0.03
Short Circuit A-C:	0.043	X/R Ratio:	11.4
Stator Slots:	48	Rotor Slots:	38

Speed Torque Current Curve (First Connection, First Speed)



Marks:



GE and the GE logo are registered trademarks of GE Industrial Systems, Inc. in the U.S. and other countries. © 2019 GE Industrial Systems, Inc. All rights reserved. This drawing is the property of GE Industrial Systems, Inc. and is intended for use only in the manufacture of the product identified herein. No other use is permitted without the written permission of GE Industrial Systems, Inc.

REV.	DESCRIPTION	DATE	APPROVED

REV. 1
DESCRIPTION: 404/405 TS TFC XSD
DATE: 01/21/2021
APPROVED:

REV. 2
DESCRIPTION: 404/405 TS TFC XSD
DATE: 01/21/2021
APPROVED:

REV. 3
DESCRIPTION: 404/405 TS TFC XSD
DATE: 01/21/2021
APPROVED:

- NOTES:
- 1. CONDUIT BOX MAY BE PLACED WITH THE ENTRANCE DOWN, UP OR ON EITHER SIDE.
 - 2. F-I ASSEMBLY AS SHOWN.
 - 3. ALL DIMENSIONS ARE IN INCHES. BRACKETED DIMENSIONS ARE METRIC (MILLIMETERS).



SIGNATURES	DATE
MODEL: PRAXIMA 05/01/2021	
DESIGN: PRAXIMA 05/01/2021	
CHECKED: PRAXIMA 05/01/2021	
ISSUED: PRAXIMA 05/01/2021	

GE INDUSTRIAL MOTORS
a WOODWARD company

OUTLINE

404/405 TS TFC XSD
700 CU. IN. CONDUIT BOX & GROUND PAD

239C6400ZK 000

SCALE: 0.250

SHEET 1 OF 1

Marks:

Connection Diagram
GEM2034E-FIG7



End shield Assembly		
Part Description	DE Side Part#	ODE Side Part#
End Shield	115E4305AA1	115E4305LL1
Bearing	235A2517AC01	235A2517AC01
Slinger/Inproseal	149C4399G05	149C4399G05

Fan & Fan Cover Assembly	
Part Description	Part#
Fan	159C7100AA11
Fan Cover	128D6832AA1

Conduit & Accessories Box Assembly	
Part Description	Part#
Conduit Box	118D4408AD2

Mechanical Accessories	
Part Description	Part#
Brake	
Tachometer	

