



GE INDUSTRIAL MOTORS
a **WOLONG** company

Product Technical Information

April 23, 2021

Data shown is for the current revision model #. Ensure your nameplate model # matches.

Model Number:	5KS444SAA204D10
Catalog Number:	M9832
Instruction Manual:	GEI-56128
Connection Diagram:	GEM2034E-FIG7
Outline Drawing:	239C6600GX

Accessory Connection Diagrams

Bearing Thermocouple:	None	Heater:	None
RTD:	None	Thermistor:	None
Thermostat:	None	Winding Thermocouple:	None
Bearing RTD:	None		

Table of Contents

Specification	01
Performance Characteristics	02
Outline Drawing	03
Connection Drawing(s)	04
Spare parts	05

Marks:

MODEL NUMBER: 5KS444SAA204D10
Outline Drawing: 239C6600GX
Connection Diagram: GEM2034E-FIG7
Instruction Book: GEI-56128
Design Code: 44BD1173B
Type: KS
Frame: 444T
Phases: 3
Poles: 4
Output Power: 125HP 92.5KW
RPM: 1785
Voltage: 575
Hertz: 60
Amps - FL: 115.0
Service Factor: 1.15
Alt Service Factor: --

Estimated Weight: 1900 Lbs
Time Rating: CONT
Enclosure: TEFC
Encl Construction: 841
Ambient Max(°C): 40
Alt Ambient Max(°C): --
Insulation Class: H
NEMA Design: B
Nominal Efficiency: 95.4 %
Guaranteed Efficiency: 95.0 %
3/4 Load Efficiency: --
KVA Code: G
Max KVAR: 37.2
Power Factor: 85.5
Bearing - DE: 6318ZC3
Bearing - ODE: 6318ZC3

Enclosure is Totally Enclosed Fan-Cooled

Stamped Nameplate Notes:

IEEE-STD-841-2009
 DE BRG 90BC03JP3, ODE BRG 90BC03JP3
 STAMP NP249A5564P051 AS BELOW:
 MODEL:5KS444SAA204D10 S/N: XXX
 CSA CERTIFIED CSA09.2216219 FOR EX NA IIC 200 C GC
 CL 1 ZONE2 AEX NA IIC 200C;CL 1 DIV2 GRP ABCD 200C
 IN -40C <= AMB <= 40C, 1.0 SF ON SINE-WAVE PWR
 SURF TEMP 215C AT 1.15SF ON SINE-WAVE PWR
 OR 200C VT OR 230C CT OR 260C CHP PWM CONTROL
 ALTERNATE RATING FOR PWM CONTROL 1.0SF 40C AMB
 VT 0 - 60 HZ, CT 7.6-60 HZ, CHP 60-90 HZ.



Additional Information:

4P - T EXTN
PAINTED FRAME ID & SHAFT,
FAN COVER INSIDE & ODE E/S OUTSIDE
C/BOX 700 CU IN - 3.00" NPT
OIL RESISTANT SLEEVING ON LEADS
.0015" TIR SHAFT RUNOUT
ROUTINE TEST REPORT AND 5 POINT VIBRATION TEST
REPORT INCLUDED IN C/B
GROUND PAD
F1 MOUNTING



Performance Characteristics

1st Winding 1st Connection

Design: 44BD1173B

Marks:

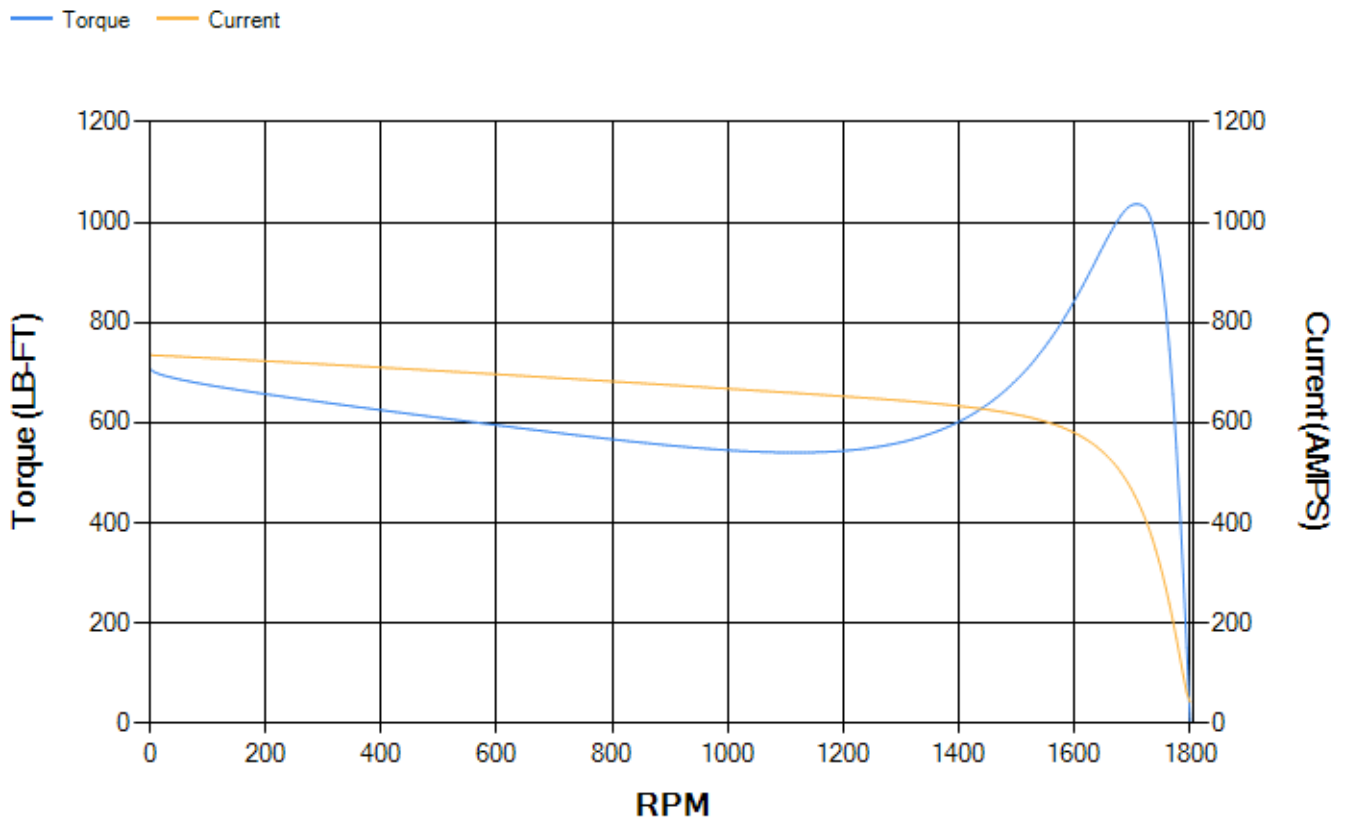
LOAD %	125.0	115.0	100.0	75.0	50.0	25.0	0.0
% EFF	95.1	95.24	95.57	95.34	94.64	91.53	0.00
% PF	87.2	86.77	85.67	81.89	72.98	51.09	4.65
AMPS	141.07	130.25	114.32	89.91	67.75	50.04	41.49

TORQ(FL)#FT	367.76	TORQ(LR)%FL	192.77	TORQ(BD)%FL	281.41
AMPS(LR)	734.97	PF AT START	0.32		

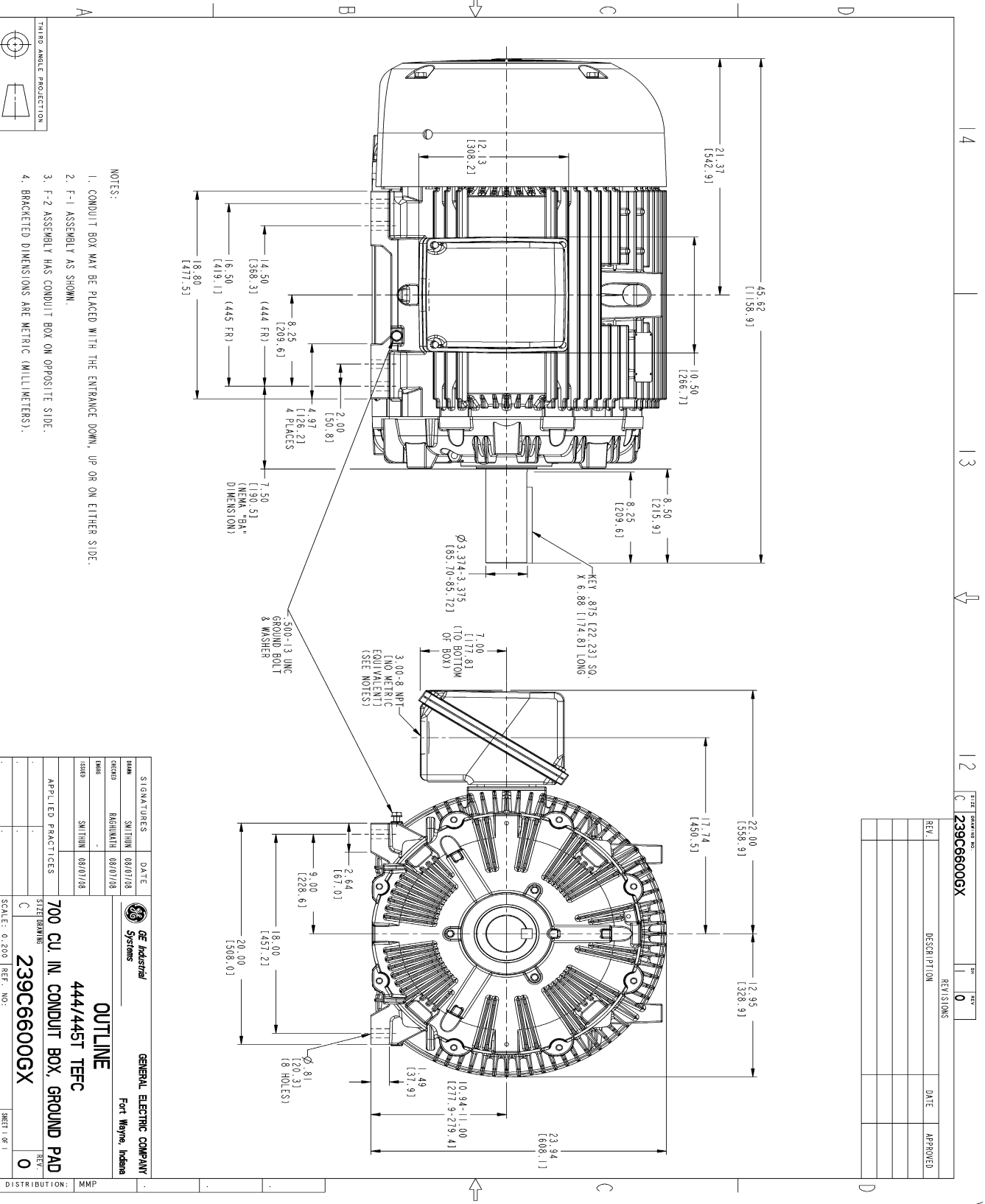
This motor is capable of two cold or one hot start with a maximum connected load inertia of 2757 Lb-Ft Sq (116.07 Kg-meter Sq)at 100% voltage, where the load torque varies with the square of the speed. Acceleration time with maximum inertia and the above load type is 32 seconds. Safe stall time at 100% voltage is 59 seconds cold, 38 seconds hot. Rotor inertia is 55.91 Lb-Ft Sq (2.35 Kg-meter Sq).

Open Circuit A-C:	0.813	Short Circuit D-C:	0.032
Short Circuit A-C:	0.042	X/R Ratio:	11.955
Stator Slots:	72	Rotor Slots:	58

Speed Torque Current Curve (First Connection, First Speed)



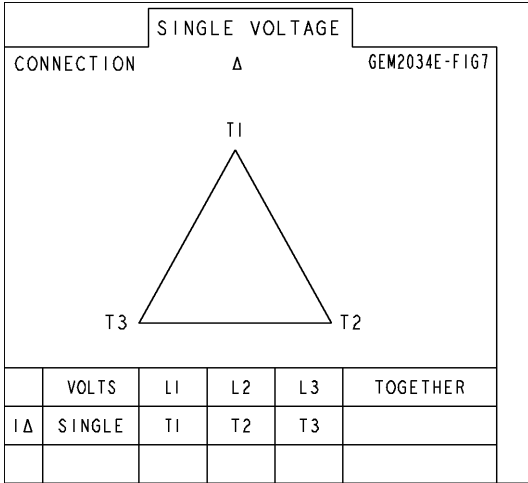
Marks:



SIGNATURES	DATE	REV.	DESCRIPTION	DATE	APPROVED
DESIGNED BY: SWITHUN	08/01/08	1			
CHECKED BY: RAJUNATH	08/01/08	2			
DESIGNED BY: SWITHUN	08/01/08	3			
APPLIED PRACTICES:		4			
SIZE DRAWING:		5			
SCALE: 0.200	REF. NO.:	6			
DISTRIBUTION: MMP		7			

Marks:

Connection Diagram
GEM2034E-FIG7



End shield Assembly		
Part Description	DE Side Part#	ODE Side Part#
End Shield	115E4355AA1	115E4355LM1
Bearing	235A2514AG01	235A2514AG01
Slinger/Inproseal	149C4399G07	149C4399G07

Fan & Fan Cover Assembly	
Part Description	Part#
Fan	159C7100G02
Fan Cover	128D6841AA1

Conduit & Accessories Box Assembly	
Part Description	Part#
Conduit Box	118D4408AD2

Mechanical Accessories	
Part Description	Part#
Brake	
Tachometer	

